

# PREFACE

## University of Tennessee, Knoxville

### Fact Book

Welcome to the **2007-2008** edition of the **Fact Book** for the University of Tennessee, Knoxville.

The 2007-2008 Fact Book data has been revised to provide information about the University of Tennessee, Knoxville. Past years' presentations of the Fact Book reflect figures for the programs in Knoxville, Memphis, and Tullahoma, as well as the Institute for Public Service and the Institute of Agriculture. The Common Data Set (<http://oira.utk.edu/stats.html>) continues to reflect the inclusive University of Tennessee. If you need information not found in the Fact Book, please contact the Office of Institutional Research and Assessment at (865) 974-4373, [oira@tennessee.edu](mailto:oira@tennessee.edu), or 2538 Dunford Hall, 915 Volunteer Blvd, Knoxville, TN 37996-4060.

The UTK e-Fact Book is presented in Adobe PDF format. It is best navigated using the “Contents” within the Bookmark pane as found in [Adobe Reader 6.0.2](#) or higher. Use the links at the right on this page to begin navigation.

[Donald Cunningham](#), Interim Director  
[Lynn Zorn](#), Fact Book Editor  
[Mozhgan Shahidi](#), CD Production, Webmaster  
Office of Institutional Research and Assessment

E01-0160-001-07

# CONTENTS

## Introduction

Contents.....	i-ii
Preface .....	iii

## Student Data

Headcount Enrollment by Full-Time/Part-Time, Level, Gender, and Race, Fall 2007.....	1
Full-Time Equivalent Enrollment by Full-Time/Part-Time, Level, Gender, and Race, Fall 2007.....	2
Headcount Enrollment by Level, College, Race, and Gender, Fall 2007.....	3
Headcount Enrollment by Age, Level, and Gender, Fall 2007 .....	4
Distribution of Student Credit Hour Loads, Fall 2007 .....	5
Student Credit Hours by Level, College, and Term, FY 2002-2007 .....	6
Top 10 Enrollment Feeders by Tennessee County, State, and Country, Fall 2007 .....	7
Headcount Enrollment by Race and Gender, Fall 1988-2007 .....	8
Total Headcount Enrollment by Level, Full-Time and Part-Time, Fall 2003-2007 .....	9
First-Time Freshmen Headcount Enrollment by College, Race, and Gender, Fall 2007 .....	10
Applied, Admitted, and Enrolled Freshmen, Fall 1986-2007 .....	11
Average Test Score, High School GPA, and Class Ranking for First-Time Freshmen, Fall 1991-2007 .....	12
Average Equivalent ACT Scores, High School GPA, and Class Ranking for First-Time Freshmen, Fall 1986-2007 .....	13
Undergraduate Transfer Headcount Enrollment by College, Race, and Gender, Fall 2007.....	14
Undergraduate Transfer Headcount Enrollment, Top Ten Feeder Institutions, Fall 2007 .....	15
Applied, Admitted, and Enrolled Undergraduate Transfer Students, Fall 1986-2007 .....	16
Undergraduate Headcount Enrollment by Race and Gender, Fall 1988-2007 .....	17
First-Time Graduate and Professional Headcount Enrollment by College, Race, and Gender, Fall 2007.....	18
Graduate Headcount Enrollment by Race and Gender, Fall 1988-2007 .....	19

## Faculty/Staff Data

Full-Time Instructional Faculty by College, Appointment Type, Tenure Status, and Rank, Fall 2007.....	20
Tenured and Non-Tenured Full-Time Instructional Faculty, Fall 1996-2007, (as Percentages).....	21
Tenured and Non-Tenured Full-Time Instructional Faculty, Fall 2003-2007, (as Percentages) - Knoxville.....	22
Full-Time Instructional Faculty by College, Gender, Highest Degree Held, and Race, Fall 2007 .....	23
Age and Length of Service of Full-Time Instructional Faculty, Fall 1997-2007, (as Percentages) .....	24
Distribution of Employees by EEO Category, Fall 2007 - Demographics.....	25
Distribution of Employees by EEO Category, Fall 2007 - Budget Entity FTE FT PT .....	26
Distribution of Employees by EEO Category and Education Level, Fall 2007 .....	27
Chairs of Excellence as of October 2007 .....	28

## Financial Data

The Campaign for Tennessee .....	29-31
Average Salaries of Full-Time Instructional Faculty by College and Rank, FY 2007-2008 .....	32
Median Graduate Assistant Stipends, FY 1987-2008.....	33
Student Tuition by Level, Academic Years 2004-2008 .....	34
Need-Based Financial Aid, Academic Year 2007-2008.....	35-36

## Facilities Data

Number and Percent of Occupancy for Student Residence Halls, and Married/Graduate Student Housing, Fall 2007 .....	37
Main Library Holdings and Expenditures, FY 2003-2007 .....	38
Law Library Holdings and Expenditures, FY 2003-2007 .....	39
UT Knoxville Campus Libraries and Centers .....	40
Space Institute Library Holdings and Expenditures, FY 2003-2007.....	41

## Outcomes Data

One Year Retention Rates, First-Time Full-Time Freshmen, Fall Terms 1983-2006.....	42
Four Year Graduation Rates, First-Time Full-Time Freshmen, Fall Terms 1983-2003 .....	43
Five Year Graduation Rates, First-Time Full-Time Freshmen, Fall Terms 1983-2002.....	44
Six Year Graduation Rates, First-Time Full-Time Freshmen, Fall Terms 1983-2001.....	45
Graduation Rates, First-Time Full-Time Freshmen, Fall Terms 1983-2003.....	46
Summary of Degrees Conferred by Discipline, FY 2003-2007 .....	47
Summary of Degrees Conferred by Level, FY 1984-2007.....	48
Degrees Awarded by Major, FY 1996-2007 .....	49-58

**Headcount Enrollment**  
**By Full-Time/Part-Time, Level, Gender, and Race**  
**Fall 2007**

	Total	GENDER		RACE (IPEDS Categories)						
		Men	Women	Am. Indian	Asian	Black	Hispanic	White	Not Reported	Non-Resident
<b>TOTAL ENROLLMENT</b>	<b>27,283</b>	<b>13,271</b>	<b>14,012</b>	<b>91</b>	<b>694</b>	<b>2,169</b>	<b>436</b>	<b>22,478</b>	<b>308</b>	<b>1,107</b>
Full-Time	23,704	11,557	12,147	76	629	1,948	396	19,593	235	827
Part-Time	3,579	1,714	1,865	15	65	221	40	2,885	73	280
<b>TOTAL UNDERGRADUATE</b>	<b>21,133</b>	<b>10,490</b>	<b>10,643</b>	<b>73</b>	<b>591</b>	<b>1,803</b>	<b>343</b>	<b>17,886</b>	<b>165</b>	<b>272</b>
Full-Time	19,664	9,789	9,875	63	554	1,699	323	16,633	141	251
Part-Time	1,469	701	768	10	37	104	20	1,253	24	21
<b>First-Time Freshmen</b>	<b>4,351</b>	<b>2,125</b>	<b>2,226</b>	<b>10</b>	<b>124</b>	<b>387</b>	<b>71</b>	<b>3,656</b>	<b>62</b>	<b>41</b>
Full-Time	4,331	2,116	2,215	10	123	387	71	3,638	61	41
Part-Time	20	9	11		1			18	1	
<b>Other Freshmen</b>	<b>1,544</b>	<b>859</b>	<b>685</b>	<b>6</b>	<b>31</b>	<b>167</b>	<b>34</b>	<b>1,285</b>	<b>9</b>	<b>12</b>
Full-Time	1,481	824	657	5	30	162	32	1,231	9	12
Part-Time	63	35	28	1	1	5	2	54		
<b>Sophomore</b>	<b>4,615</b>	<b>2,247</b>	<b>2,368</b>	<b>21</b>	<b>122</b>	<b>407</b>	<b>73</b>	<b>3,929</b>	<b>32</b>	<b>31</b>
Full-Time	4,455	2,162	2,293	20	120	389	71	3,794	31	30
Part-Time	160	85	75	1	2	18	2	135	1	1
<b>Junior</b>	<b>4,679</b>	<b>2,302</b>	<b>2,377</b>	<b>15</b>	<b>136</b>	<b>399</b>	<b>69</b>	<b>3,989</b>	<b>23</b>	<b>48</b>
Full-Time	4,449	2,208	2,241	15	131	385	65	3,787	19	47
Part-Time	230	94	136		5	14	4	202	4	1
<b>Senior</b>	<b>5,576</b>	<b>2,804</b>	<b>2,772</b>	<b>20</b>	<b>163</b>	<b>432</b>	<b>91</b>	<b>4,757</b>	<b>34</b>	<b>79</b>
Full-Time	4,836	2,430	2,406	13	146	375	81	4,135	21	65
Part-Time (1)	740	374	366	7	17	57	10	622	13	14
<b>Other Undergraduate</b>	<b>368</b>	<b>153</b>	<b>215</b>	<b>1</b>	<b>15</b>	<b>11</b>	<b>5</b>	<b>270</b>	<b>5</b>	<b>61</b>
Full-Time	112	49	63		4	1	3	48		56
Part-Time	256	104	152	1	11	10	2	222	5	5
<b>TOTAL GRADUATE/PROFESSIONAL</b>	<b>6,150</b>	<b>2,781</b>	<b>3,369</b>	<b>18</b>	<b>103</b>	<b>366</b>	<b>93</b>	<b>4,592</b>	<b>143</b>	<b>835</b>
Full-Time	4,040	1,768	2,272	13	75	249	73	2,960	94	576
Part-Time	2,110	1,013	1,097	5	28	117	20	1,632	49	259
<b>Knoxville</b>	<b>5,670</b>	<b>2,545</b>	<b>3,125</b>	<b>18</b>	<b>96</b>	<b>351</b>	<b>82</b>	<b>4,188</b>	<b>120</b>	<b>815</b>
Full-Time	3,705	1,658	2,047	13	70	241	63	2,687	74	557
Part-Time	1,965	887	1,078	5	26	110	19	1,501	46	258
<b>Space Institute</b>	<b>205</b>	<b>175</b>	<b>30</b>	<b>0</b>	<b>3</b>	<b>11</b>	<b>3</b>	<b>163</b>	<b>5</b>	<b>20</b>
Full-Time	61	49	12		1	4	2	33	2	19
Part-Time	144	126	18		2	7	1	130	3	1
<b>Veterinary Medicine</b>	<b>275</b>	<b>61</b>	<b>214</b>	<b>0</b>	<b>4</b>	<b>4</b>	<b>8</b>	<b>241</b>	<b>18</b>	<b>0</b>
Full-Time	274	61	213		4	4	8	240	18	
Part-Time	1		1					1		

Note: (1) Space Insitute has one part-time undergraduate white, male senior

Source: Student Information System

**Full-Time Equivalent Enrollment  
By Full-Time/Part-Time, Level, Gender, and Race  
Fall 2007**

	Total	GENDER		RACE (IPEDS Categories)						
		Men	Women	Am. Indian	Asian	Black	Hispanic	White	Not Reported	Non-Resident
<b>TOTAL ENROLLMENT</b>	<b>24,672.0</b>	<b>11,911.4</b>	<b>12,760.5</b>	<b>77.1</b>	<b>661.6</b>	<b>2,020.4</b>	<b>408.9</b>	<b>20,339.4</b>	<b>267.1</b>	<b>897.6</b>
Full-Time	23,180.2	11,202.2	11,978.0	71.7	633.6	1,924.0	391.2	19,144.5	239.3	776.0
Part-Time	1,491.7	709.2	782.5	5.4	28.0	96.4	17.7	1,194.9	27.8	121.6
<b>TOTAL UNDERGRADUATE</b>	<b>19,687.5</b>	<b>9,734.2</b>	<b>9,953.3</b>	<b>63.0</b>	<b>569.6</b>	<b>1,706.2</b>	<b>321.6</b>	<b>16,631.1</b>	<b>144.5</b>	<b>251.6</b>
Full-Time	19,027.1	9,416.5	9,610.6	59.5	552.3	1,657.9	311.5	16,068.5	135.0	242.5
Part-Time	660.3	317.7	342.7	3.5	17.3	48.3	10.1	562.6	9.5	9.1
<b>First-Time Freshmen</b>	<b>4,173.5</b>	<b>2,031.9</b>	<b>2,141.5</b>	<b>9.3</b>	<b>122.7</b>	<b>375.9</b>	<b>68.1</b>	<b>3,498.9</b>	<b>59.3</b>	<b>39.3</b>
Full-Time	4,161.3	2,026.3	2,135.0	9.3	122.0	375.9	68.1	3,487.9	58.8	39.3
Part-Time	12.1	5.6	6.5		0.7			11.0	0.5	
<b>Other Freshmen</b>	<b>1,453.5</b>	<b>802.7</b>	<b>650.8</b>	<b>5.5</b>	<b>30.1</b>	<b>160.9</b>	<b>31.1</b>	<b>1,205.3</b>	<b>8.8</b>	<b>11.8</b>
Full-Time	1,422.4	784.4	638.0	4.8	29.5	159.3	29.7	1,178.6	8.8	11.8
Part-Time	31.1	18.3	12.8	0.7	0.7	1.7	1.5	26.7	0.0	
<b>Sophomore</b>	<b>4,424.3</b>	<b>2,136.1</b>	<b>2,288.2</b>	<b>19.5</b>	<b>121.2</b>	<b>388.8</b>	<b>70.6</b>	<b>3,764.4</b>	<b>29.5</b>	<b>30.3</b>
Full-Time	4,346.3	2,094.1	2,252.2	19.3	119.8	379.4	69.7	3,699.1	29.3	29.7
Part-Time	78.1	42.1	36.0	0.2	1.4	9.4	0.9	65.3	0.2	0.7
<b>Junior</b>	<b>4,433.0</b>	<b>2,170.1</b>	<b>2,262.9</b>	<b>13.9</b>	<b>137.0</b>	<b>382.7</b>	<b>63.9</b>	<b>3,767.3</b>	<b>20.2</b>	<b>48.1</b>
Full-Time	4,322.4	2,123.4	2,199.0	13.9	134.4	375.9	62.6	3,669.2	18.5	47.9
Part-Time	110.6	46.7	63.9		2.6	6.7	1.3	98.1	1.7	0.2
<b>Senior</b>	<b>5,020.4</b>	<b>2,516.3</b>	<b>2,504.1</b>	<b>14.6</b>	<b>151.7</b>	<b>393.0</b>	<b>84.4</b>	<b>4,281.3</b>	<b>25.4</b>	<b>70.1</b>
Full-Time	4,673.0	2,343.9	2,329.1	12.1	143.2	366.4	78.7	3,989.1	19.6	63.8
Part-Time (Note 1)	347.4	172.4	175.0	2.5	8.5	26.6	5.7	292.1	5.8	6.3
<b>Other Undergraduate</b>	<b>182.7</b>	<b>76.9</b>	<b>105.8</b>	<b>0.2</b>	<b>6.9</b>	<b>4.9</b>	<b>3.5</b>	<b>113.9</b>	<b>1.3</b>	<b>52.0</b>
Full-Time	101.7	44.4	57.3		3.4	1.1	2.7	44.5		50.1
Part-Time	81.0	32.5	48.5	0.2	3.5	3.9	0.7	69.4	1.3	1.9
<b>TOTAL GRADUATE/PROFESSIONAL</b>	<b>4,984.5</b>	<b>2,177.3</b>	<b>2,807.3</b>	<b>14.1</b>	<b>92.0</b>	<b>314.2</b>	<b>87.3</b>	<b>3,708.3</b>	<b>122.6</b>	<b>646.0</b>
Full-Time	4,153.1	1,785.7	2,367.4	12.3	81.3	266.1	79.7	3,076.0	104.3	533.5
Part-Time	831.4	391.6	439.8	1.8	10.7	48.1	7.7	632.3	18.3	112.5
<b>Knoxville</b>	<b>4,478.8</b>	<b>2,004.4</b>	<b>2,474.4</b>	<b>14.1</b>	<b>84.5</b>	<b>302.7</b>	<b>72.7</b>	<b>3,282.4</b>	<b>93.9</b>	<b>628.5</b>
Full-Time	3,692.0	1,651.2	2,040.8	12.3	74.3	256.7	65.5	2,690.4	76.6	516.3
Part-Time	786.8	353.3	433.6	1.8	10.2	46.1	7.2	592.0	17.3	112.3
<b>Space Institute</b>	<b>97.4</b>	<b>81.8</b>	<b>15.7</b>	<b>0.0</b>	<b>1.4</b>	<b>5.2</b>	<b>2.4</b>	<b>68.3</b>	<b>2.7</b>	<b>17.5</b>
Full-Time	53.5	43.4	10.1		0.9	3.2	1.9	28.6	1.7	17.3
Part-Time	43.9	38.3	5.6		0.5	2.0	0.5	39.7	1.0	0.3
<b>Veterinary Medicine</b>	<b>408.3</b>	<b>91.1</b>	<b>317.2</b>	<b>0.0</b>	<b>6.1</b>	<b>6.3</b>	<b>12.3</b>	<b>357.7</b>	<b>26.0</b>	<b>0.0</b>
Full-Time	407.6	91.1	316.5		6.1	6.3	12.3	357.0	26.0	
Part-Time	0.7		0.7					0.7		

Note 1 - Space Insitute has one part-time undergraduate white, male senior.

Source: Student Information System

**Headcount Enrollment  
By Level, College, Race, and Gender  
Fall 2007**

	TOTAL			AMERICAN INDIAN			ASIAN			BLACK			HISPANIC			WHITE			NOT REPORTED		
	TOTAL	MEN	WOMEN	TOTAL	MEN	WOMEN	TOTAL	MEN	WOMEN	TOTAL	MEN	WOMEN	TOTAL	MEN	WOMEN	TOTAL	MEN	WOMEN	TOTAL	MEN	WOMEN
<b>UNIVERSITY TOTAL</b>	<b>27,283</b>	<b>13,271</b>	<b>14,012</b>	<b>91</b>	<b>49</b>	<b>42</b>	<b>1,362</b>	<b>755</b>	<b>607</b>	<b>2,217</b>	<b>866</b>	<b>1,351</b>	<b>500</b>	<b>239</b>	<b>261</b>	<b>22,757</b>	<b>11,197</b>	<b>11,560</b>	<b>356</b>	<b>165</b>	<b>191</b>
<b>Knoxville Total</b>	26,802	13,034	13,768	91	49	42	1,346	743	603	2,201	856	1,345	487	235	252	22,345	10,993	11,352	332	158	174
<b>UNDERGRADUATE TOTAL</b>	<b>21,133</b>	<b>10,490</b>	<b>10,643</b>	<b>73</b>	<b>40</b>	<b>33</b>	<b>694</b>	<b>376</b>	<b>318</b>	<b>1,827</b>	<b>748</b>	<b>1,079</b>	<b>364</b>	<b>175</b>	<b>189</b>	<b>18,003</b>	<b>9,070</b>	<b>8,933</b>	<b>172</b>	<b>81</b>	<b>91</b>
<b>Knoxville</b>	21,132	10,489	10,643	73	40	33	694	376	318	1,827	748	1,079	364	175	189	18,002	9,069	8,933	172	81	91
Agricultural Sciences & Natural Resources	858	450	408	2	2	0	6	3	3	41	11	30	10	3	7	796	430	366	3	1	2
Architecture & Design	415	198	217	1	0	1	13	7	6	20	13	7	9	1	8	370	176	194	2	1	1
Arts & Sciences	7,829	3,530	4,299	34	17	17	279	147	132	779	290	489	126	63	63	6,541	2,983	3,558	70	30	40
Business Administration	3,193	1,976	1,217	12	9	3	133	65	68	211	103	108	57	34	23	2,761	1,754	1,007	19	11	8
Communication & Information	1,614	593	1,021	4	1	3	35	13	22	168	57	111	28	7	21	1,371	511	860	8	4	4
Education, Health & Human Sciences	1,407	462	945	4	1	3	18	5	13	121	46	75	34	10	24	1,218	396	822	12	4	8
Engineering	1,805	1,520	285	4	4	0	99	81	18	148	96	52	34	29	5	1,509	1,300	209	11	10	1
Nursing	799	91	708	3	0	3	18	2	16	84	7	77	15	1	14	671	79	592	8	2	6
Social Work	120	12	108	0	0	0	0	0	0	23	2	21	2	0	2	93	10	83	2	0	2
University	3,092	1,657	1,435	9	6	3	93	53	40	232	123	109	49	27	22	2,672	1,430	1,242	37	18	19
<b>Space Institute</b>	1	1	0													1	1				
<b>GRADUATE/PROFESSIONAL TOTAL</b>	<b>6,150</b>	<b>2,781</b>	<b>3,369</b>	<b>18</b>	<b>9</b>	<b>9</b>	<b>668</b>	<b>379</b>	<b>289</b>	<b>390</b>	<b>118</b>	<b>272</b>	<b>136</b>	<b>64</b>	<b>72</b>	<b>4,754</b>	<b>2,127</b>	<b>2,627</b>	<b>184</b>	<b>84</b>	<b>100</b>
<b>Knoxville</b>	5,670	2,545	3,125	18	9	9	652	367	285	374	108	266	123	60	63	4,343	1,924	2,419	160	77	83
Agricultural Sciences & Natural Resources	243	138	105	1	0	1	41	22	19	5	1	4	12	6	6	174	105	69	10	4	6
Architecture & Design	28	15	13	0	0	0	3	1	2	0	0	0	1	0	1	24	14	10	0	0	0
Arts & Sciences	1,467	748	719	4	1	3	167	96	71	48	20	28	42	19	23	1,160	590	570	46	22	24
Business Administration	581	371	210	4	3	1	79	41	38	28	16	12	14	11	3	441	288	153	15	12	3
Communication & Information	302	78	224	2	0	2	22	6	16	16	5	11	3	0	3	252	65	187	7	2	5
Education, Health & Human Sciences	1,053	301	752	2	1	1	67	19	48	70	17	53	16	7	9	880	252	628	18	5	13
Engineering	593	467	126	1	1	0	229	167	62	28	18	10	12	9	3	304	258	46	19	14	5
Intercollegiate Programs	29	13	16	0	0	0	9	5	4	1	0	1	0	0	0	18	8	10	1	0	1
Law	462	242	220	3	2	1	10	5	5	48	17	31	8	5	3	375	202	173	18	11	7
Nursing	181	26	155	0	0	0	10	1	9	3	0	3	1	0	1	163	25	138	4	0	4
Social Work	445	56	389	1	1	0	7	1	6	115	10	105	12	2	10	296	37	259	14	5	9
University	286	90	196	0	0	0	8	3	5	12	4	8	2	1	1	256	80	176	8	2	6
<b>Space Institute</b>	205	175	30	0	0	0	12	10	2	12	9	3	5	4	1	170	147	23	6	5	1
<b>Veterinary Medicine</b>	275	61	214	0	0	0	4	2	2	4	1	3	8	0	8	241	56	185	18	2	16

Source: Student Information System

## Headcount Enrollment By Age, Level, and Gender Fall 2007

	TOTAL				UNDERGRADUATE				GRADUATE/PROFESSIONAL			
	TOTAL	MEN	WOMEN	PERCENT	TOTAL	MEN	WOMEN	PERCENT	TOTAL	MEN	WOMEN	PERCENT
<b>TOTAL</b>	<b>27,283</b>	<b>13,271</b>	<b>14,012</b>	<b>100.0</b>	<b>21,133</b>	<b>10,490</b>	<b>10,643</b>	<b>100.0</b>	<b>6,150</b>	<b>2,781</b>	<b>3,369</b>	<b>100.0</b>
< 18	59	28	31	0.2	59	28	31	0.3	0			0.0
18	2,842	1,273	1,569	10.4	2,842	1,273	1,569	13.4	0			0.0
19	4,006	1,909	2,097	14.7	4,005	1,909	2,096	19.0	1		1	0.0
20	4,005	1,873	2,132	14.7	3,998	1,871	2,127	18.9	7	2	5	0.1
<b>21</b>	<b>3,855</b>	<b>1,835</b>	<b>2,020</b>	<b>14.1</b>	<b>3,820</b>	<b>1,825</b>	<b>1,995</b>	<b>18.1</b>	<b>35</b>	<b>10</b>	<b>25</b>	<b>0.6</b>
22	3,119	1,647	1,472	11.4	2,715	1,495	1,220	12.8	404	152	252	6.6
23	1,816	970	846	6.7	1,175	730	445	5.6	641	240	401	10.4
24	1,239	621	618	4.5	552	337	215	2.6	687	284	403	11.2
25	899	451	448	3.3	345	196	149	1.6	554	255	299	9.0
<b>26</b>	<b>714</b>	<b>371</b>	<b>343</b>	<b>2.6</b>	<b>275</b>	<b>159</b>	<b>116</b>	<b>1.3</b>	<b>439</b>	<b>212</b>	<b>227</b>	<b>7.1</b>
27	598	298	300	2.2	199	124	75	0.9	399	174	225	6.5
28	557	271	286	2.0	166	85	81	0.8	391	186	205	6.4
29	384	190	194	1.4	92	49	43	0.4	292	141	151	4.7
30	385	218	167	1.4	116	76	40	0.5	269	142	127	4.4
<b>31</b>	<b>284</b>	<b>171</b>	<b>113</b>	<b>1.0</b>	<b>87</b>	<b>54</b>	<b>33</b>	<b>0.4</b>	<b>197</b>	<b>117</b>	<b>80</b>	<b>3.2</b>
32	265	128	137	1.0	71	36	35	0.3	194	92	102	3.2
33	204	105	99	0.7	51	24	27	0.2	153	81	72	2.5
34	166	90	76	0.6	47	25	22	0.2	119	65	54	1.9
35	170	83	87	0.6	43	19	24	0.2	127	64	63	2.1
<b>36</b>	<b>157</b>	<b>77</b>	<b>80</b>	<b>0.6</b>	<b>45</b>	<b>16</b>	<b>29</b>	<b>0.2</b>	<b>112</b>	<b>61</b>	<b>51</b>	<b>1.8</b>
37	164	83	81	0.6	50	24	26	0.2	114	59	55	1.9
38	148	78	70	0.5	40	20	20	0.2	108	58	50	1.8
39	99	42	57	0.4	32	17	15	0.2	67	25	42	1.1
40	91	52	39	0.3	23	12	11	0.1	68	40	28	1.1
<b>41 - 45</b>	<b>410</b>	<b>165</b>	<b>245</b>	<b>1.5</b>	<b>112</b>	<b>28</b>	<b>84</b>	<b>0.5</b>	<b>298</b>	<b>137</b>	<b>161</b>	<b>4.8</b>
46 - 50	289	110	179	1.1	74	25	49	0.4	215	85	130	3.5
51 - 64	338	120	218	1.2	87	26	61	0.4	251	94	157	4.1
65 AND OVER	20	12	8	0.1	12	7	5	0.1	8	5	3	0.1
Missing	0	0	0	0.0	0			0.0	0			0.0

Source: Student Information System

**Distribution of Student Credit Hour Loads  
Fall 2007**

CREDIT HOURS	TOTAL	UNDERGRADUATE							GRADUATE		PROFESSIONAL		
		FRESHMAN	OTHER		SOPHOMORE	JUNIOR	SENIOR	5TH YEAR	OTHER	Space		Veterinary	
			FRESHMAN							Institute	Knoxville	Medicine	Law
1	76	0	0	0	0	9	0	18	3	46	0	0	
2	13	0	0	0	1	5	0	3	0	4	0	0	
3	1,135	0	11	25	28	96	4	108	104	759	0	0	
4	119	1	4	6	8	18	5	20	6	51	0	0	
5	43	0	0	2	1	11	0	7	0	22	0	0	
6	1,203	3	10	29	65	183	10	39	30	833	0	1	
7	310	1	3	23	22	48	4	8	2	199	0	0	
8	147	1	3	5	10	44	3	30	0	51	0	0	
9	1,406	1	13	28	50	174	11	13	9	1,107	0	0	
10	597	7	13	27	33	70	8	5	36	396	0	2	
11	243	6	6	15	12	31	5	5	7	152	1	3	
12	3,907	316	202	593	829	1,188	50	49	1	665	0	14	
13	3,505	817	374	864	582	587	41	16	4	185	0	35	
14	3,361	1,299	215	559	682	414	26	13	0	85	23	45	
15	5,131	886	230	901	1,070	1,181	51	17	4	528	0	263	
16	3,283	745	308	974	631	454	31	6	0	20	50	64	
17	1,214	223	93	320	295	236	20	4	0	7	0	16	
18	971	35	41	166	247	355	17	4	0	12	79	15	
19	510	10	17	70	103	117	6	3	0	85	98	1	
20	61	0	1	6	4	28	3	0	0	2	17	0	
21	25	0	0	1	3	19	0	0	0	0	2	0	
22	12	0	0	1	2	6	0	0	0	1	1	1	
23	8	0	0	0	1	5	0	0	0	0	2	0	
24	3	0	0	0	0	1	0	0	0	1	1	0	
<b>TOTAL</b>	<b>27,283</b>	<b>4,351</b>	<b>1,544</b>	<b>4,615</b>	<b>4,679</b>	<b>5,280</b>	<b>295</b>	<b>368</b>	<b>206</b>	<b>5,211</b>	<b>274</b>	<b>460</b>	
<i>AVG. CREDIT HOURS</i>	13.0	14.4	14.1	14.4	14.2	13.5	13.4	7.5	5.7	9.0	17.9	14.9	

Source: Student Information System



**Student Credit Hours  
By Level, College, and Term  
FY 2002-2007**

	SUMMER TERM					FALL TERM					SPRING TERM				
	2002	2003	2004	2005	2006	2002	2003	2004	2005	2006	2003	2004	2005	2006	2007
<b>UNIVERSITY TOTAL</b>	<b>61,000</b>	<b>59,702</b>	<b>54,393</b>	<b>52,441</b>	<b>50,815</b>	<b>328,855</b>	<b>321,860</b>	<b>328,401</b>	<b>327,770</b>	<b>331,978</b>	<b>302,494</b>	<b>329,614</b>	<b>303,542</b>	<b>304,266</b>	<b>310,244</b>
<b>Knoxville</b>	60,078	58,774	53,383	51,511	49,893	323,415	316,653	324,433	322,567	326,794	297,329	324,398	298,822	298,870	305,009
<b>UNDERGRADUATE TOTAL</b>	<b>43,161</b>	<b>42,497</b>	<b>38,128</b>	<b>34,804</b>	<b>33,227</b>	<b>276,492</b>	<b>269,548</b>	<b>274,853</b>	<b>271,162</b>	<b>277,000</b>	<b>253,133</b>	<b>279,582</b>	<b>252,900</b>	<b>251,000</b>	<b>258,409</b>
Agricultural Sciences & Natural Resources	425	371	67	71	91	8,553	7,208	6,195	5,767	6,103	8,425	6,456	5,949	5,495	5,824
Architecture & Design	410	382	446	400	377	5,233	4,837	4,786	4,636	4,533	4,651	4,299	4,597	4,696	4,983
Arts & Sciences	23,933	24,451	23,355	20,776	20,462	172,406	171,224	178,620	177,598	179,421	152,444	185,338	161,264	158,942	162,700
Business Administration	8,478	6,950	6,352	5,694	5,550	33,905	33,336	32,944	32,355	34,040	32,667	31,240	30,196	31,434	32,056
Communication & Information	2,392	2,006	1,546	1,661	1,303	12,927	12,569	12,815	13,776	14,543	11,882	12,348	12,447	13,248	14,356
Education, Health & Human Sciences	5,706	6,464	4,613	4,172	3,336	23,236	20,434	19,666	18,818	19,559	25,587	22,735	21,804	20,855	21,806
Engineering	1,257	1,365	1,195	1,207	1,209	12,820	12,652	12,967	11,456	12,490	11,509	11,392	11,200	11,062	11,407
Intercollegiate Programs	0	0	28	307	330	2,082	2,066	1,845	1,803	1,596	832	733	552	443	331
Nursing	481	424	448	456	507	3,625	3,865	3,801	3,755	3,543	3,684	3,759	3,765	3,680	3,696
Social Work	48	84	78	60	62	843	630	546	620	594	632	629	573	660	738
University	31	0	0	0	0	862	727	668	578	578	820	653	553	485	512
<b>GRADUATE/PROFESSIONAL TOTAL</b>	<b>17,839</b>	<b>17,205</b>	<b>16,265</b>	<b>17,637</b>	<b>17,588</b>	<b>52,363</b>	<b>52,312</b>	<b>53,548</b>	<b>56,608</b>	<b>54,978</b>	<b>49,361</b>	<b>50,032</b>	<b>50,642</b>	<b>53,266</b>	<b>51,835</b>
<b>Knoxville</b>	16,917	16,277	15,255	16,707	16,666	46,923	47,105	49,580	51,405	49,794	44,196	44,816	45,922	47,870	46,600
Agricultural Sciences & Natural Resources	297	323	414	403	433	1,213	1,137	1,262	1,392	1,329	1,270	1,338	1,170	1,242	1,311
Architecture & Design	12	9	20	6	3	233	333	362	337	311	289	318	339	380	270
Arts & Sciences	3,374	3,916	3,515	3,667	3,808	11,093	11,480	12,613	12,443	12,310	10,898	11,333	11,810	11,681	11,960
Business Administration	1,541	1,492	1,683	1,712	2,143	7,233	7,427	7,334	7,628	7,394	4,919	5,449	5,112	5,730	5,304
Communication & Information	701	734	620	678	830	1,493	1,524	1,675	1,955	1,977	1,437	1,563	1,751	1,912	1,948
Education, Health & Human Sciences	7,876	6,567	5,894	6,124	5,268	10,203	9,237	9,459	8,706	8,243	10,668	9,719	9,677	8,863	8,579
Engineering	1,440	1,447	1,297	1,733	1,786	4,168	4,686	4,682	5,238	5,167	4,156	4,451	4,538	5,222	4,750
Law	223	198	301	243	236	6,965	6,858	6,767	6,824	6,623	6,722	6,570	6,507	6,379	6,443
Nursing	647	714	763	813	966	1,237	1,360	1,414	1,470	1,454	1,063	1,191	1,212	1,358	1,219
Social Work	800	856	736	1,328	1,193	3,049	2,968	3,967	5,412	4,986	2,765	2,809	3,701	5,103	4,816
University	6	21	12	0	0	36	95	45	0	0	9	75	105	0	0
<b>Veterinary Medicine</b>	922	928	1,010	930	922	5,440	5,207	3,968	5,203	5,184	5,165	5,216	4,720	5,396	5,235

Source: Class Roll Reporting File

**Top 10 Enrollment Feeders  
By Tennessee County, State, and Country  
Fall 2007**

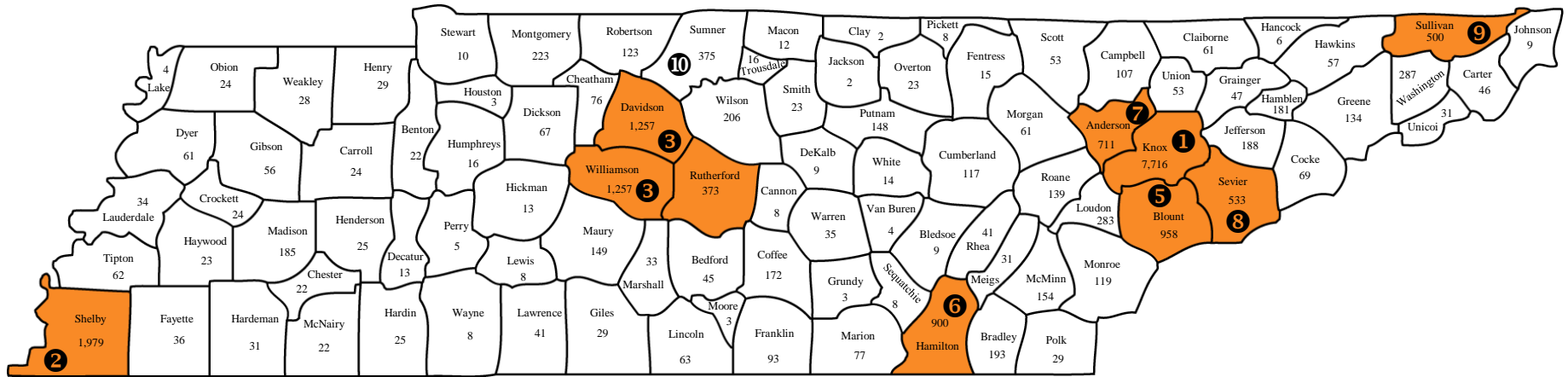
COUNTY	TOTAL	UNDERGRADUATE	GRADUATE
TENNESSEE	22,334	18,130	4,204
Knox	7,784	5,562	2,222
Shelby	2,123	1,930	193
Williamson	1,399	1,309	90
Davidson	1,351	1,150	201
Blount	953	759	194
Hamilton	902	793	109
Anderson	710	553	157
Sevier	559	476	83
Sullivan	534	468	66
Sumner	419	384	35

STATE	TOTAL	UNDERGRADUATE	GRADUATE
OUT-OF-STATE	3,842	2,731	1,111
Virginia	543	431	112
Georgia	511	403	108
North Carolina	327	231	96
Ohio	241	190	51
Florida	194	137	57
South Carolina	154	109	45
Illinois	141	107	34
Pennsylvania	135	88	47
Maryland	133	98	35
Texas	124	80	44

COUNTRY	TOTAL	UNDERGRADUATE	GRADUATE
INTERNATIONAL	1,107	272	835
China	286	26	260
India	163	12	151
Korea	105	23	82
Canada	44	22	22
Taiwan	44	13	31
United Kingdom	24	13	11
Japan	24	14	10
Thailand	23	2	21
Germany	22	7	15
Russia	16	5	11

Source: Student Information System

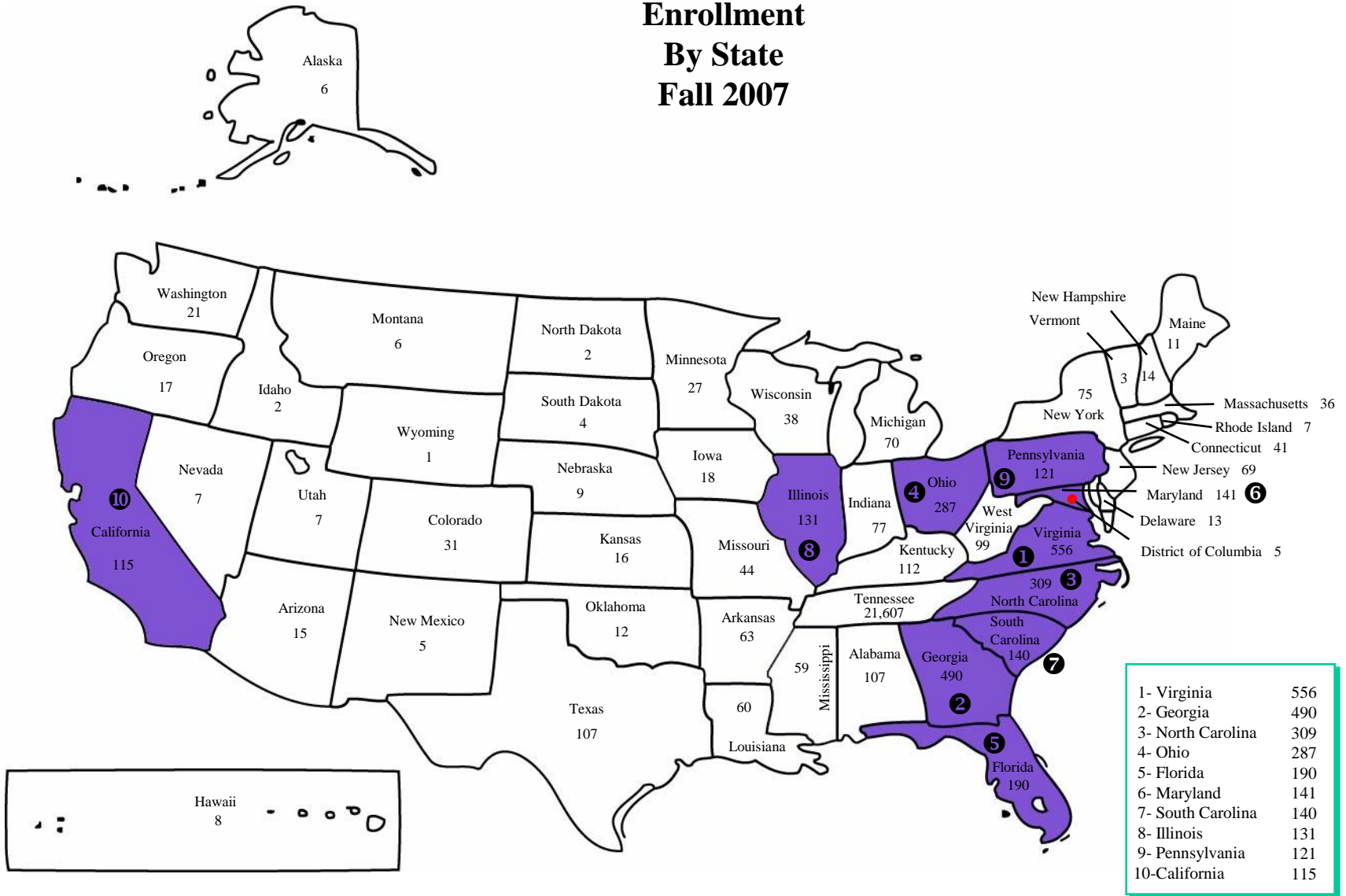
# Enrollment By County Fall 2007



Source: Student Information System

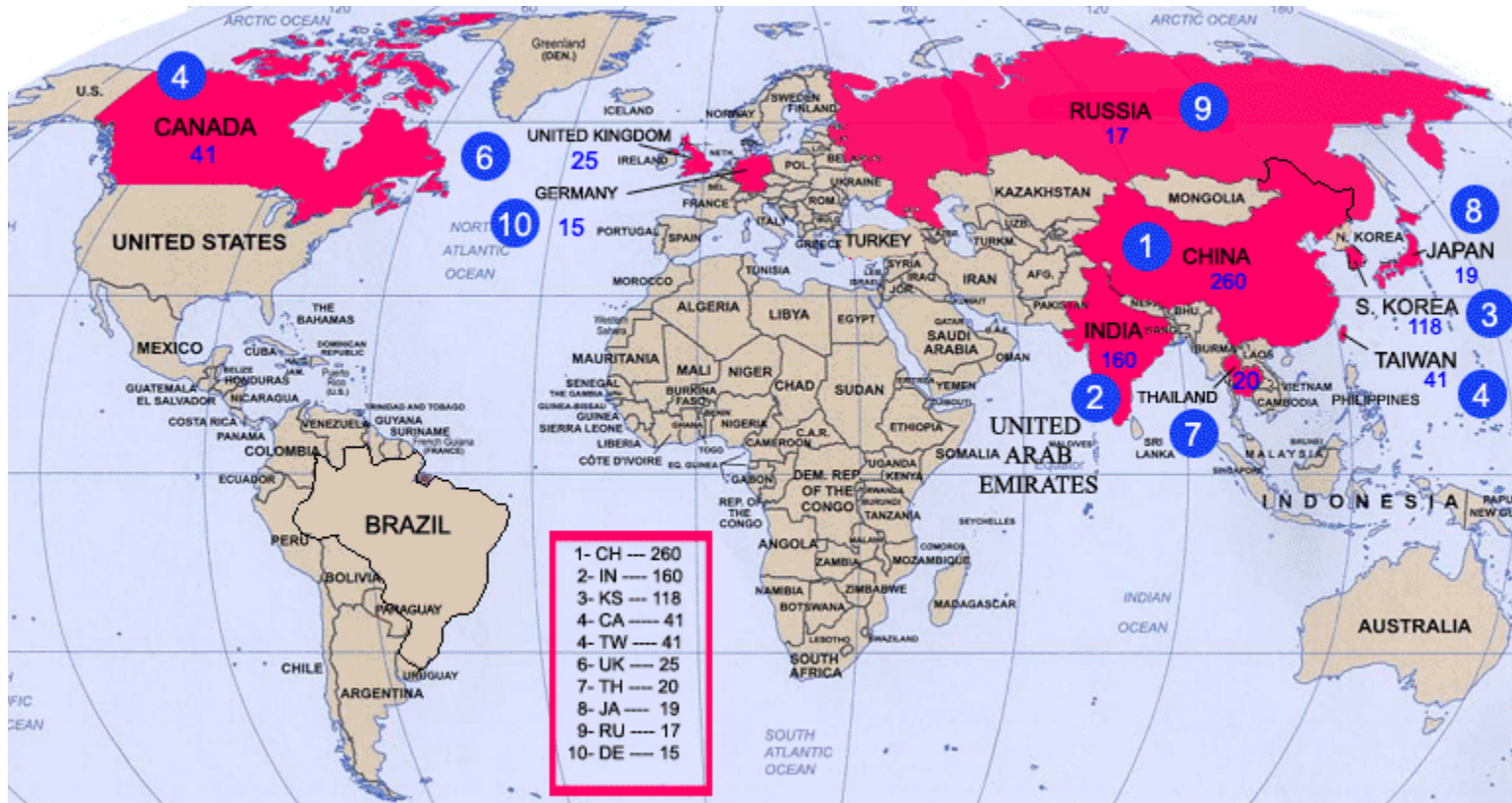
1- Knox	7,716
2- Shelby	1,979
3- Davidson	1,257
3- Williamson	1,257
5- Blount	958
6- Hamilton	900
7- Anderson	711
8- Sevier	533
9- Sullivan	500
10- Sumner	375

# Enrollment By State Fall 2007



Source: Student Information System

# International Enrollment By Country Fall 2007



Source: Student Information System

**Headcount Enrollment  
By Race and Gender  
Fall 1988-2007**

YEAR	TOTAL			AMERICAN INDIAN			ASIAN			BLACK			HISPANIC			WHITE			NOT REPORTED		
	Total	Men	Women	Total	Men	Women	Total	Men	Women	Total	Men	Women	Total	Men	Women	Total	Men	Women	Total	Men	Women
1988	24,390	12,668	11,722	44	19	25	681	453	228	1,167	501	666	139	89	50	22,359	11,606	10,753	0	0	0
1989	25,016	12,875	12,141	41	21	20	715	467	248	1,237	556	681	168	94	74	22,855	11,737	11,118	0	0	0
1990	25,414	13,086	12,328	44	18	26	787	507	280	1,317	584	733	182	102	80	23,084	11,875	11,209	0	0	0
1991	25,598	13,061	12,537	50	23	27	920	589	331	1,349	599	750	186	99	87	23,093	11,751	11,342	0	0	0
1992	25,998	13,377	12,621	58	35	23	986	632	354	1,414	631	783	226	116	110	23,314	11,963	11,351	0	0	0
1993	25,890	13,157	12,733	79	40	39	1,030	638	392	1,361	598	763	243	118	125	23,177	11,763	11,414	0	0	0
1994	25,412	12,935	12,477	73	37	36	995	612	383	1,320	593	727	256	131	125	22,768	11,562	11,206	0	0	0
1995	25,251	12,534	12,717	86	40	46	995	594	401	1,260	554	706	259	137	122	22,651	11,209	11,442	0	0	0
1996	25,086	12,349	12,737	83	41	42	982	568	414	1,216	506	710	264	141	123	22,541	11,093	11,448	0	0	0
1997	25,039	12,289	12,750	83	47	36	1,006	564	442	1,288	547	741	285	156	129	22,377	10,975	11,402	0	0	0
1998	25,611	12,393	13,218	74	37	37	1,024	570	454	1,414	591	823	295	155	140	22,804	11,040	11,764	0	0	0
1999	25,981	12,493	13,488	84	36	48	1,046	579	467	1,518	602	916	320	164	156	23,013	11,112	11,901	0	0	0
2000	25,474	12,074	13,400	77	32	45	1,083	577	506	1,540	643	897	312	155	157	22,364	10,619	11,745	98	48	50
2001	26,033	12,243	13,790	85	30	55	1,137	630	507	1,669	668	1,001	344	165	179	22,635	10,672	11,963	163	78	85
2002	25,933	12,346	13,587	91	37	54	1,216	664	552	1,748	694	1,054	351	173	178	22,214	10,640	11,574	313	138	175
2003	25,215	12,136	13,079	85	35	50	1,207	680	527	1,750	721	1,029	333	163	170	21,501	10,381	11,120	339	156	183
2004	25,632	12,374	13,258	101	48	53	1,213	694	519	1,915	776	1,139	359	176	183	21,737	10,526	11,211	307	154	153
2005	26,197	12,611	13,586	106	49	57	1,300	715	585	2,118	843	1,275	411	185	226	21,975	10,666	11,309	287	153	134
2006	26,476	12,849	13,627	100	50	50	1,333	742	591	2,174	848	1,326	462	219	243	22,110	10,852	11,258	297	138	159
2007	27,283	13,271	14,012	91	49	42	1,362	755	607	2,217	866	1,351	500	239	261	22,757	11,197	11,560	356	165	191

Source: Student Information System

**Total Headcount Enrollment  
By Level, Full-Time and Part-Time  
Fall 2003-2007**

	Total					Full-Time					Part-Time				
	2003	2004	2005	2006	2007	2003	2004	2005	2006	2007	2003	2004	2005	2006	2007
<b>TOTAL</b>	<b>25,215</b>	<b>25,632</b>	<b>26,197</b>	<b>26,476</b>	<b>27,283</b>	<b>21,353</b>	<b>21,947</b>	<b>22,579</b>	<b>22,937</b>	<b>23,704</b>	<b>3,862</b>	<b>3,685</b>	<b>3,618</b>	<b>3,539</b>	<b>3,579</b>
<b>Knoxville</b>	24,805	25,249	25,761	26,022	26,802	21,042	21,644	22,258	22,614	23,369	3,763	3,605	3,503	3,408	3,433
<b>UNDERGRADUATE TOTAL</b>	<b>19,072</b>	<b>19,505</b>	<b>20,052</b>	<b>20,435</b>	<b>21,133</b>	<b>17,362</b>	<b>17,920</b>	<b>18,559</b>	<b>18,991</b>	<b>19,664</b>	<b>1,710</b>	<b>1,585</b>	<b>1,493</b>	<b>1,444</b>	<b>1,469</b>
<b>Knoxville</b>															
First-time Freshmen	3,579	4,422	4,265	4,244	4,351	3,529	4,395	4,243	4,219	4,331	50	27	22	25	20
Other Freshmen	1,615	1,646	2,063	1,705	1,544	1,521	1,565	1,961	1,626	1,481	94	81	102	79	63
Sophomore	3,903	3,845	4,397	4,613	4,615	3,701	3,654	4,195	4,423	4,455	202	191	202	190	160
Undergraduate Special	318	327	354	321	368	98	92	139	98	112	220	235	215	223	256
Junior	3,920	3,731	3,741	4,255	4,679	3,659	3,485	3,529	4,046	4,449	261	246	212	209	230
Senior	5,413	5,240	4,961	4,967	5,280	4,571	4,480	4,259	4,309	4,591	842	760	702	658	689
5th Year Undergraduate (1)	324	294	271	330	296	283	249	233	270	245	41	45	38	60	51
<b>GRADUATE TOTAL</b>	<b>5,412</b>	<b>5,406</b>	<b>5,414</b>	<b>5,323</b>	<b>5,420</b>	<b>3,263</b>	<b>3,308</b>	<b>3,289</b>	<b>3,232</b>	<b>3,311</b>	<b>2,149</b>	<b>2,098</b>	<b>2,125</b>	<b>2,091</b>	<b>2,109</b>
<b>Knoxville</b>															
Graduate Special	400	418	467	380	336	97	74	94	71	45	303	344	373	309	291
Master Candidate	3,357	3,332	3,146	3,078	3,102	2,262	2,337	2,169	2,118	2,152	1,095	995	977	960	950
Education Special	33	40	30	41	38	5	6	10	10	12	28	34	20	31	26
Doctoral - Early	1,232	1,314	1,416	1,541	1,544	779	808	921	957	980	453	506	495	584	564
Doctoral - Late	251	187	194	97	188	83	51	51	20	55	168	136	143	77	133
Post Doctoral	3	3	2	1	0	0	0	0	0	0	3	3	2	1	0
<b>Space Institute</b>															
Graduate Special	136	112	159	178	205	37	32	44	49	61	99	80	115	129	144
Master Candidate	9	9	8	14	12	0	0	1	0	1	9	9	7	14	11
Doctoral - Early	108	88	128	137	164	25	22	28	31	43	83	66	100	106	121
Doctoral - Late	15	12	21	24	25	10	9	14	16	13	5	3	7	8	12
Post Doctoral	3	2	1	3	4	2	1	1	2	4	1	1	0	1	
Post Doctoral	1	1	1	0	0	0	0	0	0	0	1	1	1	0	
<b>Veterinary Medicine</b>															
Graduate Special	0	0	0	7	7	0	0	0	7	6	0	0	0	0	1
Doctoral - Early	0	0	0	0	1	0	0	0	0	0	0	0	0	0	1
<b>PROFESSIONAL TOTAL</b>	<b>731</b>	<b>721</b>	<b>731</b>	<b>718</b>	<b>730</b>	<b>728</b>	<b>719</b>	<b>731</b>	<b>714</b>	<b>729</b>	<b>3</b>	<b>2</b>	<b>0</b>	<b>4</b>	<b>1</b>
<b>Law</b>															
Graduate Special	457	450	454	449	462	454	448	454	447	461	3	2	0	2	1
Professional 1st					2					2					
Professional 2nd	289	264	162	161	175	288	262	162	161	175	1	2	0	0	0
Professional 3rd	23	54	149	148	141	23	54	149	148	141	0	0	0	0	0
Professional 3rd	145	132	143	140	144	143	132	143	138	143	2	0	0	2	1
<b>Veterinary Medicine</b>															
Professional 1st	274	271	277	269	268	274	271	277	267	268	0	0	0	2	0
Professional 2nd	79	74	75	80	73	79	74	75	80	73	0	0	0	0	0
Professional 3rd	70	68	73	65	65	70	68	73	63	65	0	0	0	2	0
Professional 4th	102	129	128	124	130	102	129	128	124	130	0	0	0	0	0
Professional 4th	23	0	1	0	0	23	0	1	0	0	0	0	0	0	0

Note: (1) One 5th Year Undergraduate is a part-time student at Space Institute

Source: Student Information System

**First-Time Freshmen Headcount Enrollment  
By College, Race, and Gender  
Fall 2007**

COLLEGE	TOTAL			AMERICAN INDIAN			ASIAN			BLACK			HISPANIC			WHITE			NOT REPORTED		
	Total	Men	Women	Total	Men	Women	Total	Men	Women	Total	Men	Women	Total	Men	Women	Total	Men	Women	Total	Men	Women
<b>TOTAL</b>	<b>4,351</b>	<b>2,125</b>	<b>2,226</b>	<b>10</b>	<b>5</b>	<b>5</b>	<b>138</b>	<b>76</b>	<b>62</b>	<b>391</b>	<b>162</b>	<b>229</b>	<b>74</b>	<b>36</b>	<b>38</b>	<b>3,674</b>	<b>1,818</b>	<b>1,856</b>	<b>64</b>	<b>28</b>	<b>36</b>
Agricultural Sciences & Natural Resources	121	54	67	0	0	0	2	2	0	9	3	6	0	0	0	110	49	61	0	0	0
Architecture & Design	83	35	48	0	0	0	4	2	2	3	3	0	1	0	1	73	29	44	2	1	1
Arts & Sciences	1,568	648	920	6	2	4	50	22	28	163	52	111	23	13	10	1,299	549	750	27	10	17
Business Administration	663	438	225	0	0	0	24	15	9	51	28	23	13	8	5	568	382	186	7	5	2
Communication & Information	235	78	157	0	0	0	6	1	5	29	9	20	6	1	5	192	66	126	2	1	1
Education, Health & Human Sciences	182	63	119	0	0	0	5	1	4	18	8	10	4	1	3	151	52	99	4	1	3
Engineering	457	376	81	2	2	0	25	22	3	30	20	10	12	10	2	386	320	66	2	2	0
Nursing	184	21	163	1	0	1	0	0	0	26	3	23	8	1	7	145	17	128	4	0	4
Social Work	12	0	12	0	0	0	0	0	0	2	0	2	0	0	0	10	0	10	0	0	0
University	846	412	434	1	1	0	22	11	11	60	36	24	7	2	5	740	354	386	16	8	8

Source: Student Information System



## Applied, Admitted, and Enrolled Freshmen Fall 1986-2007

Year	Number Applied	Number Admitted	Percentage of Applicants Admitted	Number Enrolled	Percentage of Applicants Enrolled	Percentage of Admitted Enrolled
1986	6,699	5,334	80%	3,699	55%	69%
1987	6,892	5,530	80%	3,834	56%	69%
1988	7,822	6,021	77%	3,795	49%	63%
1989	7,222	5,739	79%	3,390	47%	59%
1990	7,526	5,816	77%	3,418	45%	59%
1991	6,994	5,070	72%	3,060	44%	60%
1992	7,583	5,573	73%	3,219	42%	58%
1993	7,473	5,372	72%	3,013	40%	56%
1994	7,027	5,179	74%	2,912	41%	56%
1995	8,305	5,977	72%	3,506	42%	59%
1996	8,630	6,438	75%	3,692	43%	57%
1997	8,923	6,740	76%	3,890	44%	58%
1998	9,464	7,177	76%	3,806	40%	53%
1999	10,634	7,148	67%	4,155	39%	58%
2000	10,171	6,344	62%	3,833	38%	60%
2001	8,263	5,675	69%	3,958	48%	70%
2002	9,724	5,629	58%	3,682	38%	65%
2003	9,514	8,505	89%	3,579	38%	42%
2004	10,832	9,426	87%	4,422	41%	47%
2005	12,251	9,060	74%	4,264	35%	47%
2006	12,372	9,132	74%	4,244	34%	46%
2007	12,824	9,136	71%	4,351	34%	48%

Note: Prior to 2003, declined applicants were removed from both applied and admitted counts.  
Source: Office of Enrollment Services

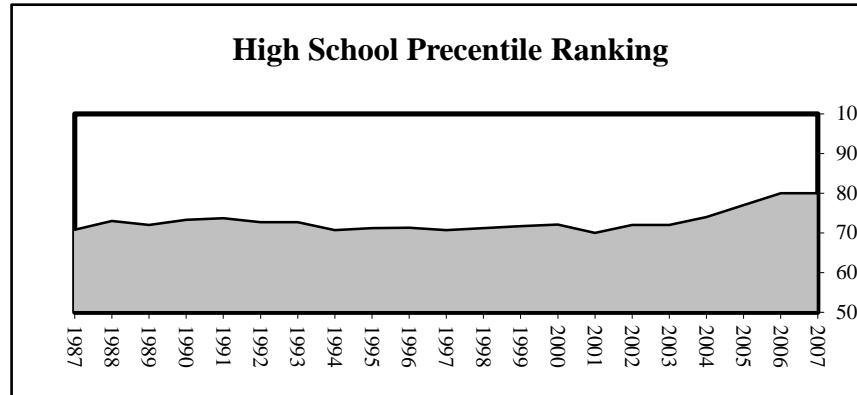
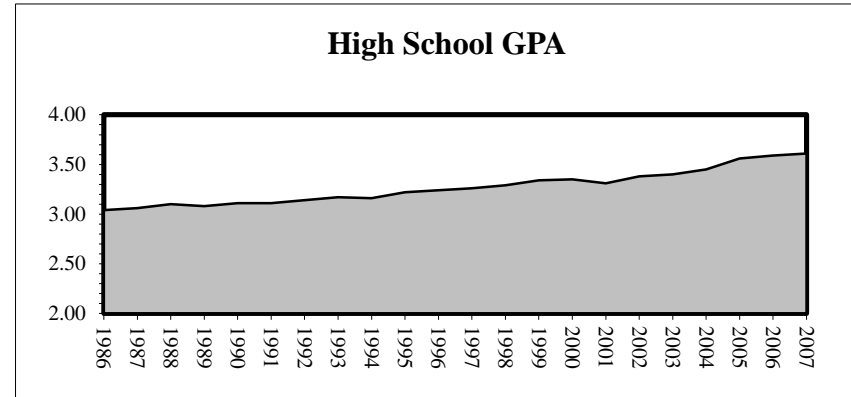
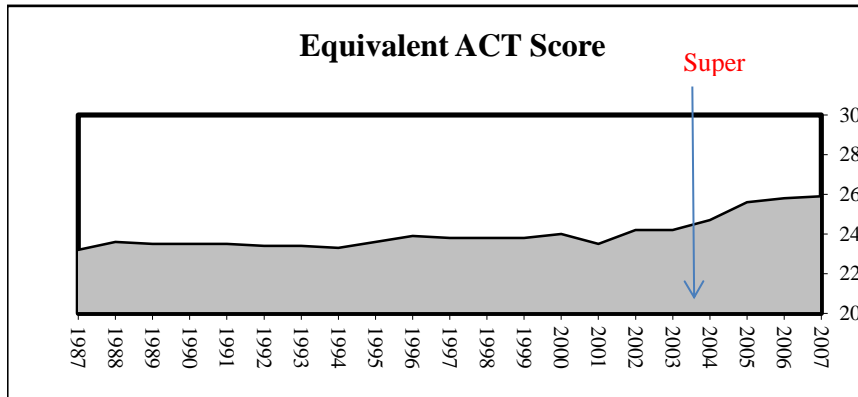
**Average Test Score, High School GPA, and Class Ranking  
For First-Time Freshmen  
Fall 1991-2007**

	1991	1992	1993	1994	1995	1996	1997	1998	1999	2000	2001	2002	2003	2004	2005	2006	2007
<b>Equivalent ACT</b>																	
Number	2,989	3,160	2,960	2,867	3,458	3,649	3,851	3,781	4,132	3,818	3,932	3,662	3,556	4,394	4,148	4,213	4,326
Average	23.5	23.4	23.4	23.3	23.6	23.9	23.8	23.8	23.8	24.0	23.5	24.2	24.2	24.7	25.6	25.8	25.9
<b>ACT Composite</b>																	
Number	2,611	2,742	2,618	2,539	3,067	3,240	3,356	3,294	3,581	3,303	3,411	3,138	3,086	3,859	3,731	3,856	4,019
Average	23.3	23.2	23.1	23.1	23.4	23.6	23.6	23.6	23.6	23.9	23.4	24.0	24.1	24.7	25.4	25.7	25.9
<b>SAT Total</b>																	
Number	1,370	1,439	1,287	1,181	1,478	1,665	1,771	1,734	1,829	1,741	1,714	1,699	1,634	1,947	1,763	1,595	1,493
Average	1,093	1,089	1,095	1,097	1,106	1,113	1,101	1,104	1,103	1,113	1,092	1,110	1,116	1,113	1,157	1,156	1,152
<b>High School GPA</b>																	
Number	3,026	3,172	2,982	2,896	3,473	3,657	3,869	3,777	4,131	3,818	3,932	3,666	3,567	4,404	3,597	3,540	3,731
Average	3.11	3.14	3.17	3.16	3.22	3.24	3.26	3.29	3.34	3.35	3.31	3.38	3.40	3.45	3.56	3.59	3.61
3.50 - 4.00	783	890	911	890	1,142	1,212	1,398	1,459	1,748	1,612	1,677	1,714	1,640	2,179	2,155	2,195	2,374
3.00 - 3.49	1,001	1,001	955	929	1,143	1,050	1,284	1,255	1,377	1,335	1,214	1,113	1,123	1,457	992	1,001	1,046
2.50 - 2.99	844	919	788	739	876	716	921	853	814	699	751	633	635	637	389	301	268
2.00 - 2.49	388	346	314	329	299	250	255	208	189	168	266	182	157	123	59	41	38
< 2.00	10	16	14	9	13	0	11	2	3	4	24	24	12	8	2	2	5
<b>High School Percentile Ranking</b>																	
Number	2,295	2,379	2,139	2,003	2,322	2,149	2,079	2,055	2,096	1,962	3,257	2,930	2,778	3,104	2,161	2,108	2,130
Average	74	73	73	71	71	71	71	72	72	72	70	72	72	74	77	80	80
76 - 99	1,257	1,267	1,151	970	1,154	1,106	1,045	1,054	1,088	1,035	1,647	1,579	1,485	1,747	1,363	1,429	1,459
51 - 75	701	707	627	639	745	653	637	613	657	594	983	845	839	917	582	493	516
26 - 50	294	331	305	332	364	320	338	327	291	276	480	409	383	371	185	156	137
1 - 25	43	74	56	62	59	70	59	61	60	57	147	97	71	69	31	30	18

Source: Student Information System and Student Record Master

Note: Equivalent ACT scores are based on the higher of ACT composite or SAT total converted to ACT. Beginning in 2004, a "super score" is used for the ACT and SAT with the score based on the highest score of individual components.

**Average Equivalent ACT Scores, High School GPA  
And Class Ranking for First-Time Freshmen  
Fall 1986-2007**



Source: Student Information System and Student Record Master

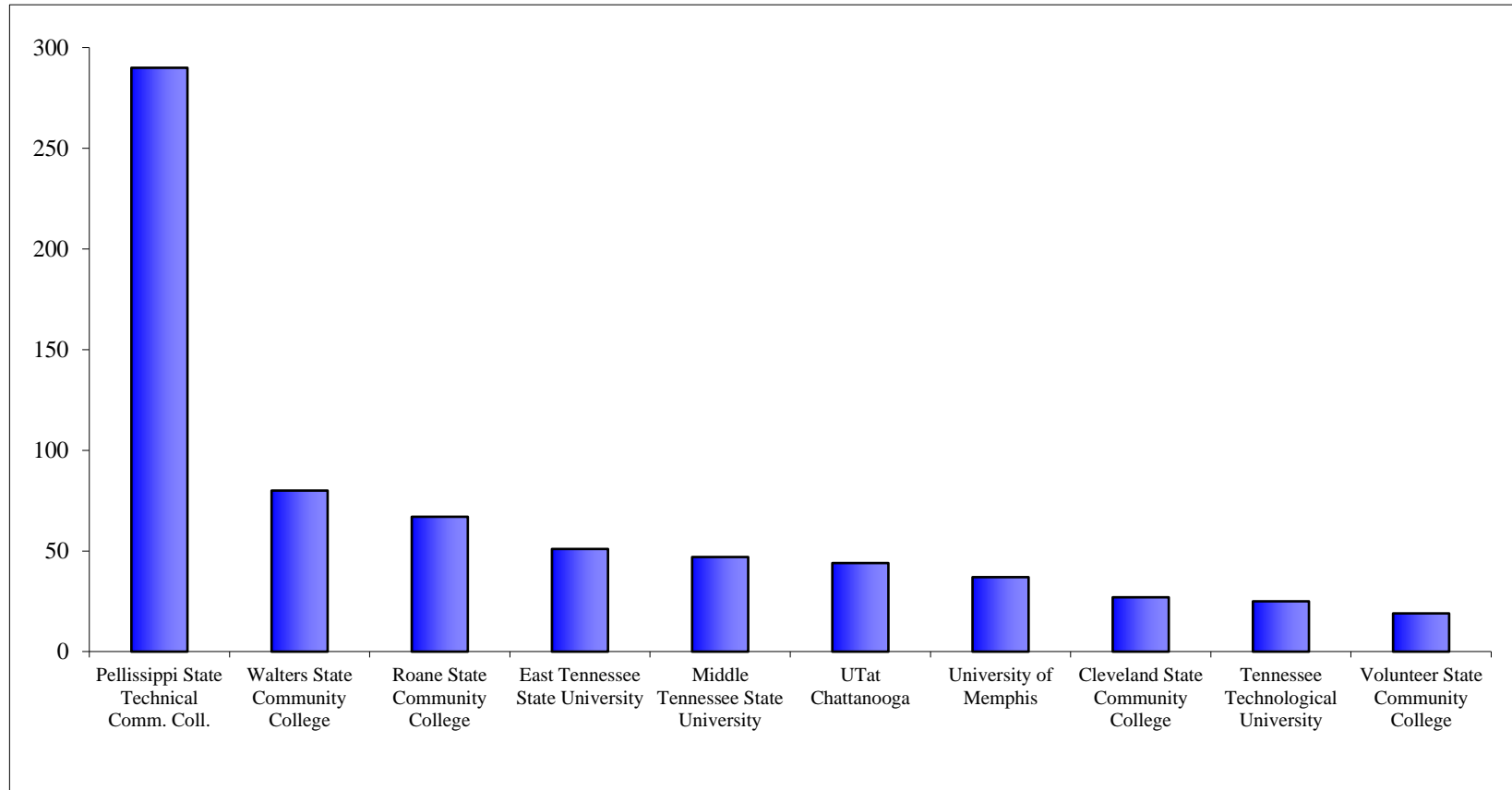
Note: Equivalent ACT scores are based on the higher of ACT composite or SAT total converted to ACT. Beginning in 2004, a "super score" is used for the ACT and SAT with the score based on the highest score of individual components.

**Undergraduate Transfer Headcount Enrollment  
By College, Race, and Gender  
Fall 2007**

COLLEGE	TOTAL			AMERICAN INDIAN			ASIAN			BLACK			HISPANIC			WHITE			NOT REPORTED		
	Total	Men	Women	Total	Men	Women	Total	Men	Women	Total	Men	Women	Total	Men	Women	Total	Men	Women	Total	Men	Women
<b>TOTAL</b>	<b>1,229</b>	<b>642</b>	<b>587</b>	<b>6</b>	<b>2</b>	<b>4</b>	<b>35</b>	<b>24</b>	<b>11</b>	<b>45</b>	<b>22</b>	<b>23</b>	<b>20</b>	<b>9</b>	<b>11</b>	<b>1,111</b>	<b>579</b>	<b>532</b>	<b>12</b>	<b>6</b>	<b>6</b>
Agricultural Sciences & Natural Resources	76	45	31	0	0	0	0	0	0	3	2	1	1	0	1	72	43	29	0	0	0
Architecture & Design	9	2	7	0	0	0	0	0	0	0	0	0	1	0	1	8	2	6	0	0	0
Arts & Sciences	444	201	243	2	2	0	11	6	5	15	5	10	7	2	5	402	184	218	7	2	5
Business Administration	151	87	64	1	0	1	8	4	4	3	2	1	4	2	2	135	79	56	0	0	0
Communication & Information	87	40	47	1	0	1	0	0	0	3	2	1	0	0	0	82	37	45	1	1	0
Education, Health & Human Sciences	91	40	51	0	0	0	0	0	0	2	1	1	3	2	1	86	37	49	0	0	0
Engineering	68	61	7	0	0	0	11	10	1	0	0	0	1	1	0	56	50	6	0	0	0
Nursing	47	11	36	1	0	1	1	1	0	3	1	2	0	0	0	42	9	33	0	0	0
Social Work	13	0	13	0	0	0	0	0	0	1	0	1	0	0	0	11	0	11	1	0	1
University	243	155	88	1	0	1	4	3	1	15	9	6	3	2	1	217	138	79	3	3	0

Source: Student Information System

**Undergraduate Transfer Headcount Enrollment  
Top Ten Feeder Institutions  
Fall 2007**



Source: Student Information System

**Applied, Admitted, and Enrolled  
Undergraduate Transfer Students  
Fall 1986-2007**

Year	Number Applied	Number Admitted	Percentage of Applicants Admitted	Number Enrolled	Percentage of Applicants Enrolled	Percentage of Admitted Enrolled
1986	2,119	1,603	76%	1,097	52%	68%
1987	1,882	1,350	72%	934	50%	69%
1988	2,080	1,461	70%	938	45%	64%
1989	2,235	1,615	72%	1,097	49%	68%
1990	2,576	1,837	71%	1,226	48%	67%
1991	2,662	1,868	70%	1,249	47%	67%
1992	2,725	1,938	71%	1,481	54%	76%
1993	2,898	2,084	72%	1,586	55%	76%
1994	2,956	2,141	72%	1,624	55%	76%
1995	2,830	1,987	70%	1,352	48%	68%
1996	2,784	1,991	72%	1,434	52%	72%
1997	2,554	1,829	72%	1,173	46%	64%
1998	2,489	1,730	70%	1,214	49%	70%
1999	2,647	1,826	69%	1,427	54%	78%
2000	2,479	1,754	71%	1,246	50%	71%
2001	2,208	1,727	78%	1,411	64%	82%
2002*	2,449	1,688	69%	1,372	56%	81%
2003*	2,319	1,652	71%	1,384	60%	84%
2004*	2,376	1,802	76%	1,159	49%	64%
2005*	2,796	1,996	71%	1,564	56%	78%
2006*	2,503	1,766	71%	1,364	54%	77%
2007*	2,857	1,909	67%	1,281	45%	67%

Source: Office of Enrollment Services

\*Data for 2002 - 2006 include Knoxville and Health Science Center

**Undergraduate Headcount Enrollment  
By Race and Gender  
Fall 1988-2007**

YEAR	TOTAL			AMERICAN INDIAN			ASIAN			BLACK			HISPANIC			WHITE			NOT REPORTED		
	Total	Men	Women	Total	Men	Women	Total	Men	Women	Total	Men	Women	Total	Men	Women	Total	Men	Women	Total	Men	Women
1988	18,770	9,811	8,959	25	11	14	329	193	136	863	390	473	74	47	27	17,479	9,170	8,309	0	0	0
1989	19,067	9,891	9,176	26	14	12	339	196	143	900	422	478	94	51	43	17,708	9,208	8,500	0	0	0
1990	19,532	10,052	9,480	28	11	17	371	216	155	997	455	542	106	58	48	18,030	9,312	8,718	0	0	0
1991	19,385	9,951	9,434	33	16	17	452	268	184	1,033	469	564	103	55	48	17,764	9,143	8,621	0	0	0
1992	19,342	10,095	9,247	41	25	16	510	306	204	1,043	485	558	144	79	65	17,604	9,200	8,404	0	0	0
1993	18,986	9,770	9,216	52	28	24	543	312	231	990	453	537	157	83	74	17,244	8,894	8,350	0	0	0
1994	18,608	9,611	8,997	46	24	22	524	307	217	946	442	504	177	95	82	16,915	8,743	8,172	0	0	0
1995	18,735	9,470	9,265	53	27	26	571	324	247	864	404	460	179	98	81	17,068	8,617	8,451	0	0	0
1996	18,826	9,474	9,352	52	26	26	570	304	266	864	395	469	199	107	92	17,141	8,642	8,499	0	0	0
1997	19,061	9,520	9,541	55	33	22	637	335	302	972	447	525	210	116	94	17,187	8,589	8,598	0	0	0
1998	19,692	9,716	9,976	52	29	23	627	325	302	1,087	482	605	219	117	102	17,707	8,763	8,944	0	0	0
1999	20,259	9,912	10,347	64	31	33	604	315	289	1,196	501	695	234	125	109	18,161	8,940	9,221	0	0	0
2000	20,009	9,718	10,291	60	28	32	585	293	292	1,222	541	681	237	127	110	17,822	8,686	9,136	83	43	40
2001	20,124	9,736	10,388	64	26	38	592	313	279	1,310	559	751	249	123	126	17,775	8,649	9,126	134	66	68
2002	19,827	9,699	10,128	75	32	43	627	307	320	1,374	582	792	263	131	132	17,285	8,552	8,733	203	95	108
2003	19,072	9,381	9,691	65	27	38	567	279	288	1,393	603	790	237	122	115	16,602	8,248	8,354	208	102	106
2004	19,505	9,627	9,878	79	40	39	583	314	269	1,546	671	875	272	138	134	16,837	8,371	8,466	188	93	95
2005	20,052	9,866	10,186	85	40	45	669	333	336	1,723	724	999	318	145	173	17,130	8,556	8,574	127	68	59
2006	20,435	10,151	10,284	81	42	39	679	349	330	1,771	728	1,043	365	178	187	17,414	8,791	8,623	125	63	62
2007	21,133	10,490	10,643	73	40	33	694	376	318	1,827	748	1,079	364	175	189	18,003	9,070	8,933	172	81	91

Source: Student Information System

**First-Time Graduate and Professional Headcount Enrollment  
By College, Race, and Gender  
Fall 2007**

COLLEGE	TOTAL			AMERICAN INDIAN			ASIAN			BLACK			HISPANIC			WHITE			NOT REPORTED		
	Total	Men	Women	Total	Men	Women	Total	Men	Women	Total	Men	Women	Total	Men	Women	Total	Men	Women	Total	Men	Women
<b>TOTAL</b>	<b>1,765</b>	<b>745</b>	<b>1,020</b>	<b>4</b>	<b>1</b>	<b>3</b>	<b>171</b>	<b>78</b>	<b>93</b>	<b>122</b>	<b>30</b>	<b>92</b>	<b>43</b>	<b>19</b>	<b>24</b>	<b>1,371</b>	<b>591</b>	<b>780</b>	<b>54</b>	<b>26</b>	<b>28</b>
<b>Knoxville Total</b>	1,657	703	954	4	1	3	167	76	91	117	26	91	38	19	19	1,282	556	726	49	25	24
Agricultural Sciences & Natural Resources	56	31	25	0	0	0	11	4	7	1	0	1	5	3	2	38	24	14	1	0	1
Architecture & Design	4	2	2	0	0	0	2	1	1	0	0	0	0	0	0	2	1	1	0	0	0
Arts & Sciences	388	178	210	1	0	1	36	15	21	10	5	5	10	5	5	314	145	169	17	8	9
Business Administration Communication	249	152	97	0	0	0	33	13	20	8	5	3	2	1	1	201	129	72	5	4	1
& Information	87	18	69	0	0	0	7	3	4	3	1	2	1	0	1	74	14	60	2	0	2
Education, Health & Human Sciences	278	77	201	1	0	1	18	3	15	23	2	21	4	3	1	226	68	158	6	1	5
Engineering	115	92	23	0	0	0	46	33	13	6	4	2	5	3	2	53	47	6	5	5	0
Intercollegiate Programs	4	3	1	0	0	0	2	1	1	0	0	0	0	0	0	2	2	0	0	0	0
Law	175	90	85	1	0	1	6	3	3	16	5	11	6	3	3	141	75	66	5	4	1
Nursing	18	1	17	0	0	0	2	0	2	3	0	3	0	0	0	13	1	12	0	0	0
Social Work	153	20	133	1	1	0	2	0	2	44	4	40	4	1	3	99	13	86	3	1	2
University	130	39	91	0	0	0	2	0	2	3	0	3	1	0	1	119	37	82	5	2	3
<b>Space Institute</b>	40	32	8	0	0	0	2	1	1	5	4	1	1	0	1	31	26	5	1	1	0
<b>Veterinary Medicine</b>	68	10	58	0	0	0	2	1	1	0	0	0	4	0	4	58	9	49	4	0	4

Source: Student Information System



**Graduate Headcount Enrollment  
By Race and Gender  
Fall 1988-2007**

YEAR	TOTAL			AMERICAN INDIAN			ASIAN			BLACK			HISPANIC			WHITE			NOT REPORTED		
	Total	Men	Women	Total	Men	Women	Total	Men	Women	Total	Men	Women	Total	Men	Women	Total	Men	Women	Total	Men	Women
1988	5,620	2,857	2,763	19	8	11	352	260	92	304	111	193	65	42	23	4,880	2,436	2,444	0	0	0
1989	5,949	2,984	2,965	15	7	8	376	271	105	337	134	203	74	43	31	5,147	2,529	2,618	0	0	0
1990	5,882	3,034	2,848	16	7	9	416	291	125	320	129	191	76	44	32	5,054	2,563	2,491	0	0	0
1991	6,213	3,110	3,103	17	7	10	468	321	147	316	130	186	83	44	39	5,329	2,608	2,721	0	0	0
1992	6,656	3,282	3,374	17	10	7	476	326	150	371	146	225	82	37	45	5,710	2,763	2,947	0	0	0
1993	6,904	3,387	3,517	27	12	15	487	326	161	371	145	226	86	35	51	5,933	2,869	3,064	0	0	0
1994	6,804	3,324	3,480	27	13	14	471	305	166	374	151	223	79	36	43	5,853	2,819	3,034	0	0	0
1995	6,516	3,064	3,452	33	13	20	424	270	154	396	150	246	80	39	41	5,583	2,592	2,991	0	0	0
1996	6,260	2,875	3,385	31	15	16	412	264	148	352	111	241	65	34	31	5,400	2,451	2,949	0	0	0
1997	5,978	2,769	3,209	28	14	14	369	229	140	316	100	216	75	40	35	5,190	2,386	2,804	0	0	0
1998	5,919	2,677	3,242	22	8	14	397	245	152	327	109	218	76	38	38	5,097	2,277	2,820	0	0	0
1999	5,722	2,581	3,141	20	5	15	442	264	178	322	101	221	86	39	47	4,852	2,172	2,680	0	0	0
2000	5,465	2,356	3,109	17	4	13	498	284	214	318	102	216	75	28	47	4,542	1,933	2,609	15	5	10
2001	5,909	2,507	3,402	21	4	17	545	317	228	359	109	250	95	42	53	4,860	2,023	2,837	29	12	17
2002	6,106	2,647	3,459	16	5	11	589	357	232	374	112	262	88	42	46	4,929	2,088	2,841	110	43	67
2003	6,143	2,755	3,388	20	8	12	640	401	239	357	118	239	96	41	55	4,899	2,133	2,766	131	54	77
2004	6,127	2,747	3,380	22	8	14	630	380	250	369	105	264	87	38	49	4,900	2,155	2,745	119	61	58
2005	6,145	2,745	3,400	21	9	12	631	382	249	395	119	276	93	40	53	4,845	2,110	2,735	160	85	75
2006	6,041	2,698	3,343	19	8	11	654	393	261	403	120	283	97	41	56	4,696	2,061	2,635	172	75	97
2007	6,150	2,781	3,369	18	9	9	668	379	289	390	118	272	136	64	72	4,754	2,127	2,627	184	84	100

Source: Student Information System

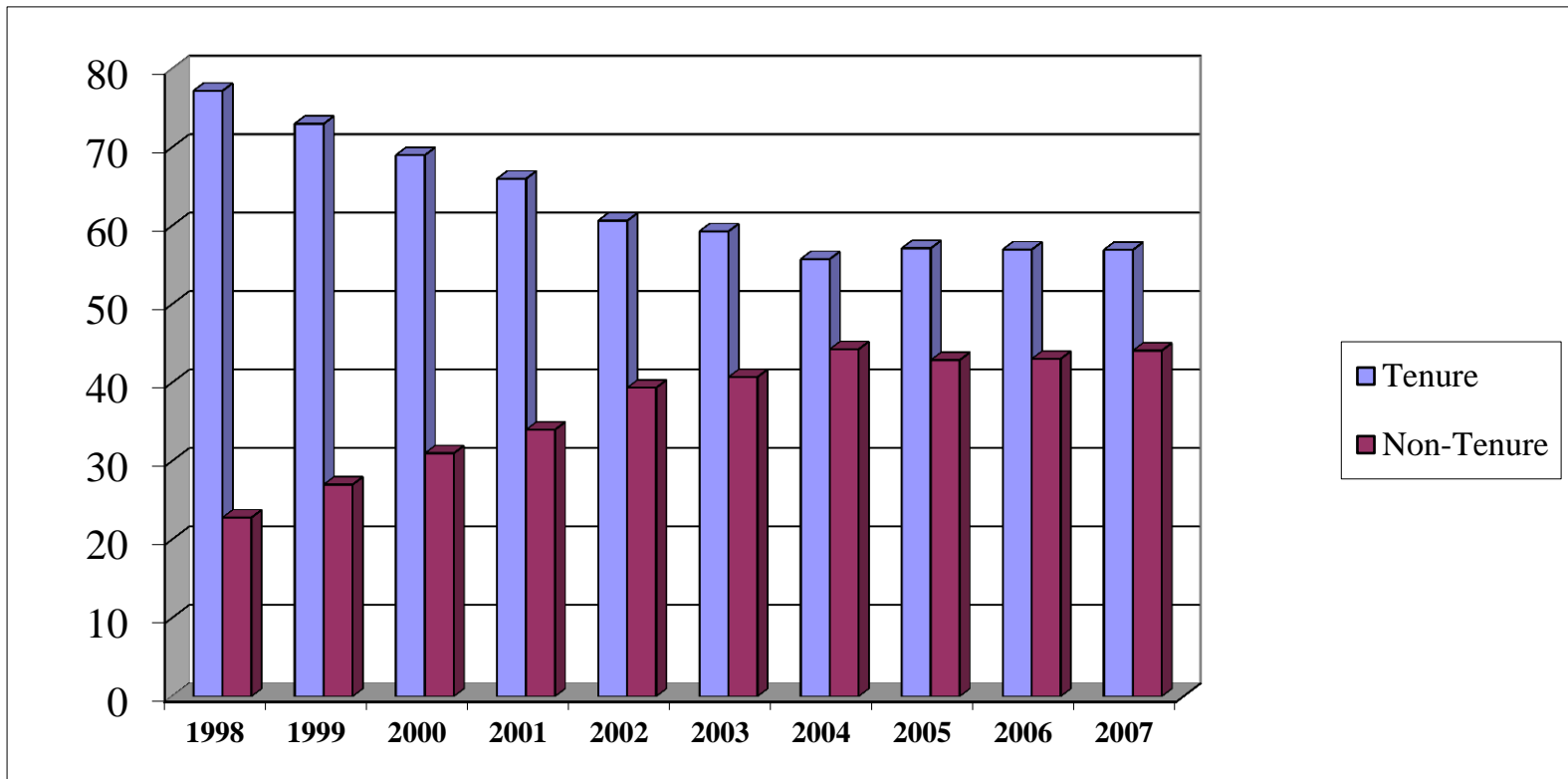
**Full-Time Instructional Faculty**  
**By College, Appointment Type, Tenure Status and Rank**  
**Fall 2007**

College	Number of Faculty	Appointment		Tenure Status		
		9-Month	12-Month	Tenured	On-Track	Non-Tenured
<b>UNIVERSITY TOTAL</b>	<b>1,402</b>	<b>1,155</b>	<b>247</b>	<b>784</b>	<b>332</b>	<b>286</b>
<b>UNIVERSITY PERCENTAGES</b>	<b>100.0</b>	<b>82.4</b>	<b>17.6</b>	<b>55.9</b>	<b>23.7</b>	<b>20.4</b>
<b>Knoxville Total</b>	1,177	1,126	51	643	286	248
<b>Knoxville Percentages</b>	100.0	95.7	4.3	54.6	24.3	21.1
Architecture & Design	27	26	1	17	7	3
Arts & Sciences - Humanities	269	268	1	126	49	94
Arts & Sciences - Natural Sciences	200	184	16	117	41	42
Arts & Sciences - Social Sciences	151	150	1	77	44	30
Business Administration	105	105	0	59	23	23
Communication & Information	61	57	4	34	16	11
Education, Health & Human Sciences	142	132	10	74	47	21
Engineering	120	117	3	83	32	5
Law	32	26	6	23	9	0
Nursing	40	36	4	12	11	17
Social Work	30	25	5	21	7	2
<b>Agricultural Sciences &amp; Natural Resources</b>	104	5	99	78	21	5
<b>Space Institute</b>	24	24	0	15	3	6
<b>Veterinary Medicine</b>	97	0	97	48	22	27

College	Number of Faculty	Academic Rank				
		Professor	Associate Professor	Assistant Professor	Instructor	Lecturer
<b>UNIVERSITY TOTAL</b>	<b>1,402</b>	<b>478</b>	<b>344</b>	<b>339</b>	<b>34</b>	<b>207</b>
<b>UNIVERSITY PERCENTAGES</b>	<b>100.0</b>	<b>34.1</b>	<b>24.5</b>	<b>24.2</b>	<b>2.4</b>	<b>14.8</b>
<b>Knoxville Total</b>	1,177	388	278	282	24	205
<b>Knoxville Percentages</b>	100.0	33.0	23.6	24.0	2.0	17.4
Architecture & Design	27	9	10	5	0	3
Arts & Sciences - Humanities	269	67	60	49	2	91
Arts & Sciences - Natural Sciences	200	90	28	42	0	40
Arts & Sciences - Social Sciences	151	42	37	41	2	29
Business Administration	105	38	24	22	0	21
Communication & Information	61	17	15	17	1	11
Education, Health & Human Sciences	142	49	26	54	5	8
Engineering	120	49	39	29	3	0
Law	32	14	18	0	0	0
Nursing	40	6	7	16	11	0
Social Work	30	7	14	7	0	2
<b>Agricultural Sciences &amp; Natural Resources</b>	104	50	27	23	3	1
<b>Space Institute</b>	24	12	9	3	0	0
<b>Veterinary Medicine</b>	97	28	30	31	7	1

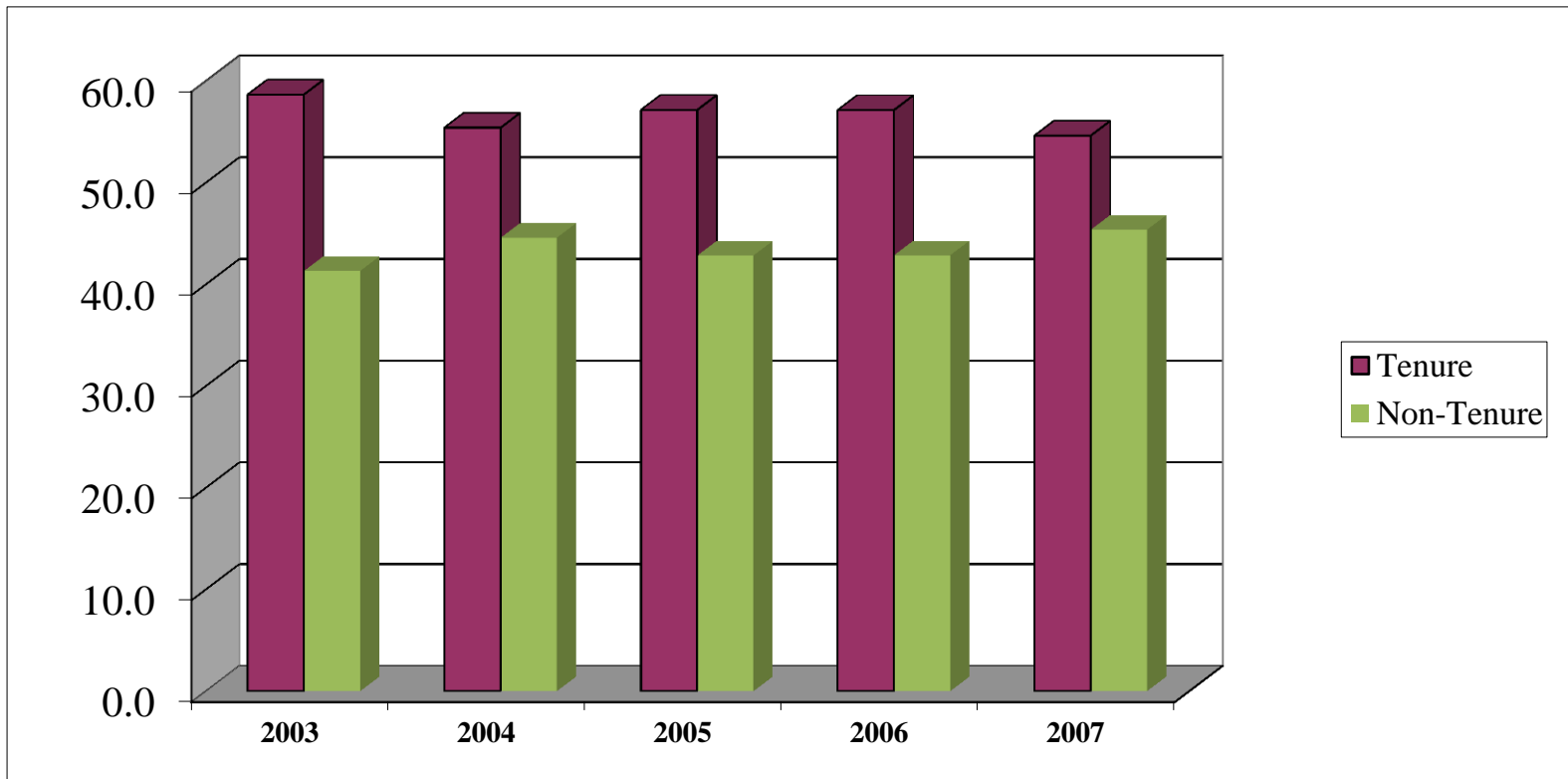
Source: IRIS

**Tenured and Non-Tenured Full-Time Instructional Faculty  
Fall 1996-2007  
(As Percentages)**



Source: IRIS

**Tenured and Non-Tenured Full-Time Instructional Faculty  
Fall 2003-2007  
(As Percentages)  
Knoxville**



Source: IRIS

**Full-Time Instructional Faculty**  
**By College, Gender, Highest Degree Held and Race**  
**Fall 2007**

Colleges	Number of Faculty	Gender		HIGHEST DEGREE HELD				
		Men	Women	PhD	Profes-sional	Masters	Bachelor	High School
<b>UNIVERSITY TOTAL</b>	<b>1,402</b>	<b>894</b>	<b>508</b>	<b>1,073</b>	<b>94</b>	<b>218</b>	<b>16</b>	<b>1</b>
<b>UNIVERSITY PERCENTAGES</b>	<b>100.0</b>	<b>63.8</b>	<b>36.2</b>	<b>76.5</b>	<b>6.7</b>	<b>15.5</b>	<b>1.1</b>	<b>0.1</b>
<b>Knoxville Total</b>	1,177	730	447	919	33	208	16	1
<b>Knoxville Percentages</b>	100.0	62.0	38.0	78.1	2.8	17.7	1.4	0.1
Architecture & Design	27	21	6	6	0	18	3	0
Arts & Sciences - Humanities	269	142	127	175	1	84	8	1
Arts & Sciences - Natural Sciences	200	157	43	175	0	25	0	0
Arts & Sciences - Social Sciences	151	100	51	140	1	9	1	0
Business Administration	105	76	29	92	0	12	1	0
Communication & Information	61	26	35	50	0	9	2	0
Education, Health & Human Sciences	142	56	86	112	3	27	0	0
Engineering	120	112	8	117	0	2	1	0
Law	32	22	10	3	24	5	0	0
Nursing	40	3	37	20	4	16	0	0
Social Work	30	15	15	29	0	1	0	0
<b>Agricultural Sciences &amp; Natural Resources</b>	104	85	19	96	0	8	0	0
<b>Space Institute</b>	24	22	2	22	1	1	0	0
<b>Veterinary Medicine</b>	97	57	40	36	60	1	0	0

Colleges	Number of Faculty	RACE				
		American Indian	Asian	Black	Hispanic	White
<b>UNIVERSITY TOTAL</b>	<b>1,402</b>	<b>5</b>	<b>116</b>	<b>46</b>	<b>33</b>	<b>1,202</b>
<b>UNIVERSITY PERCENTAGES</b>	<b>100.0</b>	<b>0.4</b>	<b>8.3</b>	<b>3.3</b>	<b>2.4</b>	<b>85.7</b>
<b>Knoxville Total</b>	1,177	4	99	37	30	1,007
<b>Knoxville Percentages</b>	100.0	0.3	8.4	3.1	2.5	85.6
Architecture & Design	27	0	0	0	0	27
Arts & Sciences - Humanities	269	0	10	10	15	234
Arts & Sciences - Natural Sciences	200	1	18	1	7	173
Arts & Sciences - Social Sciences	151	1	9	3	2	136
Business Administration	105	0	8	3	2	92
Communication & Information	61	0	5	2	2	52
Education, Health & Human Sciences	142	1	11	10	0	120
Engineering	120	0	36	1	1	82
Law	32	0	0	2	0	30
Nursing	40	0	1	2	0	37
Social Work	30	1	1	3	1	24
<b>Agricultural Sciences &amp; Natural Resources</b>	104	0	8	2	0	94
<b>Space Institute</b>	24	0	4	2	0	18
<b>Veterinary Medicine</b>	97	1	5	5	3	83

Source: IRIS

**Age and Length of Service of Full-Time Instructional Faculty  
Fall 1997-2007  
(As Percentages)**

Age Distribution	Fall 1997	Fall 1998	Fall 1999	Fall 2000	Fall 2001	Fall 2002	Fall 2003	Fall 2004	Fall 2005	Fall 2006	Fall 2007
< 30	1.0	0.6	1.0	1.4	1.6	2.3	1.5	1.8	1.6	1.9	1.8
30-39	15.6	15.5	12.8	13.4	14.2	17.1	18.4	20.5	19.8	21.0	21.8
40-49	31.4	32.0	31.4	31.9	31.2	29.0	27.8	26.1	26.6	25.30	24.9
50-59	32.6	33.6	35.4	34.4	34.7	34.0	31.5	30.6	30.9	31.0	30.3
60-65	14.4	14.0	14.7	14.1	14.1	13.4	15.3	15.4	14.7	14.4	15.2
> 65	5.0	4.2	4.7	4.7	4.3	4.2	5.5	5.7	6.4	6.3	6.0

Length of Service	Fall 1997	Fall 1998	Fall 1999	Fall 2000	Fall 2001	Fall 2002	Fall 2003	Fall 2004	Fall 2005	Fall 2006	Fall 2007
0 - 4	19.1	19.0	16.3	19.2	17.1	31.3	32.5	33.6	33.96	33.2	33.4
5 - 9	17.5	17.5	18.7	18.7	18.6	12.8	12.0	14.3	14.27	17.4	19.8
10 - 14	12.7	13.5	14.6	13.7	15.3	12.2	13.8	13.6	13.03	11.1	10.7
15 - 19	12.5	12.2	11.9	11.4	11.6	12.4	10.1	9.5	10.07	10.9	9.8
>19	38.3	37.8	38.4	37.0	37.4	31.3	31.5	29.1	28.67	27.3	26.3

Source: IRIS

**Distribution of Employees  
By EEO Category  
Fall 2007**

EEO CATEGORY	TOTAL NUMBER	MEN		WOMEN		WHITE		BLACK		TOTAL MINORITY	
		Number	Percent	Number	Percent	Number	Percent	Number	Percent	Number	Percent
<b>UNIVERSITY TOTALS</b>	<b>8,874</b>	<b>4,670</b>	<b>52.6</b>	<b>4,204</b>	<b>47.4</b>	<b>7,708</b>	<b>86.9</b>	<b>682</b>	<b>7.7</b>	<b>1,166</b>	<b>13.1</b>
<b>EXECUTIVE/ADMINISTRATIVE/MANAGERIAL</b>	<b>361</b>	<b>199</b>	<b>55.1</b>	<b>162</b>	<b>44.9</b>	<b>328</b>	<b>90.9</b>	<b>28</b>	<b>7.8</b>	<b>33</b>	<b>9.1</b>
Executive	61	40	65.6	21	34.4	55	90.2	5	8.2	6	9.8
Administrative	300	159	53.0	141	47.0	273	91.0	23	7.7	27	9.0
<b>FACULTY</b>	<b>1,923</b>	<b>1,196</b>	<b>62.2</b>	<b>727</b>	<b>37.8</b>	<b>1,658</b>	<b>86.2</b>	<b>60</b>	<b>3.1</b>	<b>265</b>	<b>13.8</b>
Professor	592	487	82.3	105	17.7	541	91.4	11	1.9	51	8.6
Associate Professor	417	264	63.3	153	36.7	355	85.1	17	4.1	62	14.9
Assistant Professor	426	237	55.6	189	44.4	320	75.1	19	4.5	106	24.9
Instructor	69	18	26.1	51	73.9	67	97.1	1	1.4	2	2.9
Lecturer	406	181	44.6	225	55.4	365	89.9	12	3.0	41	10.1
Other Faculty	13	9	69.2	4	30.8	10	76.9	0	0.0	3	23.1
<b>PROFESSIONAL</b>	<b>1,624</b>	<b>803</b>	<b>49.4</b>	<b>821</b>	<b>50.6</b>	<b>1,400</b>	<b>86.2</b>	<b>71</b>	<b>4.4</b>	<b>224</b>	<b>13.8</b>
Professional	1,624	803	49.4	821	50.6	1,400	86.2	71	4.4	224	13.8
<b>SECRETARIAL/CLERICAL</b>	<b>1,642</b>	<b>163</b>	<b>9.9</b>	<b>1,479</b>	<b>90.1</b>	<b>1,429</b>	<b>87.0</b>	<b>181</b>	<b>11.0</b>	<b>213</b>	<b>13.0</b>
Supervisory	51	19	37.3	32	62.7	47	92.2	3	5.9	4	7.8
Non-Supervisory	1,591	144	9.1	1,447	90.9	1,382	86.9	178	11.2	209	13.1
<b>TECHNICAL/PARAPROFESSIONAL</b>	<b>571</b>	<b>251</b>	<b>44.0</b>	<b>320</b>	<b>56.0</b>	<b>529</b>	<b>92.6</b>	<b>10</b>	<b>1.8</b>	<b>42</b>	<b>7.4</b>
Supervisory	15	8	53.3	7	46.7	15	100.0	0	0.0	0	0.0
Non-Supervisory	556	243	43.7	313	56.3	514	92.4	10	1.8	42	7.6
<b>SKILLED CRAFTS</b>	<b>371</b>	<b>362</b>	<b>97.6</b>	<b>9</b>	<b>2.4</b>	<b>358</b>	<b>96.5</b>	<b>9</b>	<b>2.4</b>	<b>13</b>	<b>3.5</b>
Supervisory	36	36	100.0	0	0.0	35	97.2	1	2.8	1	2.8
Non-Supervisory	335	326	97.3	9	2.7	323	96.4	8	2.4	12	3.6
<b>SERVICE MAINTENANCE</b>	<b>2,382</b>	<b>1,696</b>	<b>71.2</b>	<b>686</b>	<b>28.8</b>	<b>2,006</b>	<b>84.2</b>	<b>323</b>	<b>13.6</b>	<b>376</b>	<b>15.8</b>
Supervisory	75	53	70.7	22	29.3	59	78.7	16	21.3	16	21.3
Non-Supervisory	2,307	1,643	71.2	664	28.8	1,947	84.4	307	13.3	360	15.6

Source: IRIS

**Distribution of Employees  
By EEO Category and Budget Entity  
Fall 2007**

EEO CATEGORY	TOTAL				Knoxville			
	Number	FTE	Full-time	Part-time	Number	FTE	Full-time	Part-time
<b>All Employees</b>	<b>8,874</b>	<b>8,096</b>	<b>7,456</b>	<b>1,418</b>	<b>6,991</b>	<b>6,308</b>	<b>5,821</b>	<b>1,170</b>
EXECUTIVE/ADMINISTRATIVE/MANAGERIAL	361	353	343	18	307	300	293	14
FACULTY	1,923	1,751	1,633	290	1,639	1,475	1,362	277
PROFESSIONAL	1,624	1,585	1,525	99	1,029	994	943	86
SECRETARIAL/CLERICAL	1,642	1,524	1,366	276	1,210	1,122	1,037	173
TECHNICAL/PARAPROFESSIONAL	571	516	474	97	355	312	287	68
SKILLED CRAFTS	371	368	367	4	354	352	351	3
SERVICE MAINTENANCE	2,382	1,999	1,748	634	2,097	1,753	1,548	549

EEO CATEGORY	Space Institute				Institute of Agriculture (Veterinary Medicine)			
	Number	FTE	Full-time	Part-time	Number	FTE	Full-time	Part-time
<b>All Employees</b>	<b>118</b>	<b>111</b>	<b>102</b>	<b>16</b>	<b>1,765</b>	<b>1,678</b>	<b>1,533</b>	<b>232</b>
EXECUTIVE/ADMINISTRATIVE/MANAGERIAL	10	9	9	1	44	44	41	3
FACULTY	28	25	25	3	256	251	246	10
PROFESSIONAL	24	22	21	3	571	568	561	10
SECRETARIAL/CLERICAL	21	20	18	3	411	382	311	100
TECHNICAL/PARAPROFESSIONAL	9	9	8	1	207	196	179	28
SKILLED CRAFTS	9	9	9	0	8	7	7	1
SERVICE MAINTENANCE	17	16	12	5	268	230	188	80

Source: IRIS

Note: Regular and term employees



**Distribution of Employees  
By EEO Category and Education Level  
Fall 2007**

EEO CATEGORY	LEVEL OF EDUCATION						
	All	Doctorate	Professional	Masters	Bachelor	High School	Unknown
<b>All Employees</b>	<b>9,493</b>	<b>1,998</b>	<b>1,020</b>	<b>1,618</b>	<b>1,578</b>	<b>3,279</b>	<b>2,394</b>
EXECUTIVE/ADMINISTRATIVE/MANAGE	487	128	41	186	111	21	13
FACULTY	3,028	1,595	902	470	55	6	53
PROFESSIONAL	2,122	261	71	798	709	283	82
SECRETARIAL/CLERICAL	1,885	2	0	63	337	1,483	304
TECHNICAL/PARAPROFESSIONAL	760	8	5	79	281	387	113
SKILLED CRAFTS	355	0	0	4	8	343	60
SERVICE MAINTENANCE	856	4	1	18	77	756	1,769

Source: IRIS

Note: Regular and term employees

## Chairs of Excellence As of October 2007

CHAIR NAME	CHAIRHOLDER
<b>Knoxville</b>	
Bernadotte E. Schmitt Chair of History	Dr. Robert J. Norrell
Bernard Blasingame Chair in Agricultural Policy	Dr. Daryll E. Ray
Bruce Chair of Excellence in Business Policy	Dr. John T. Mentzer
Chair of Science, Technology & Medical Writing	Dr. Mark Littmann
Clayton Homes Chair in Finance	Dr. James Wansley
Condra Chair of Computer Integrated Engineering & Manufacturing	vacant
Condra Chair of Power Electronics Applications	vacant
Forrest & Patsy Shumway Chair in Romance Language	vacant
Goodrich Chair in Waste Management & Environmental Engineering	Dr. Thomas Urbanik, III
Hodges Chair of English	Dr. Elizabeth Bellamy
Ivan Racheff Chair of Materials Science & Engineering	Dr. Peter K. Liaw
Ivan Racheff Chair of Plant Molecular Genetics	Dr. Neal Stewart
J. Fred Holly Chair in Political Economy	Dr. William S. Neilson
Nancy Gore Hunger Chair in Environmental Studies	Dr. Daniel Simberloff
Pilot Chair in Leadership	Dr. Jan R. Williams
UTK Willis Lincoln Chair in Physics	Dr. John Quinn
<b>Space Institute</b>	
Edward J. and Carolyn P. Boling Chair of Space Propulsion	Dr. Gary A. Flandro
H. H. Arnold Chair of Computational Mechanics	Dr. Joseph Majdalani

Source: Office of the Vice President for Research

**Unrestricted Expenditures and Transfers  
By Budgetary Function  
With Percent Distribution of Expenditures  
FY 2003-2008**

KNOXVILLE	ACTUAL					Budget*
	FY 2003	FY 2004	FY 2005	FY 2006	FY 2007	FY 2008
<b>TOTAL UNRESTRICTED CURRENT FUNDS</b>						
<b>EXPENDITURES &amp; TRANSFERS</b>	447,140,311	457,929,926	487,489,926	512,212,950	564,052,652	567,536,196
<b>TOTAL EDUCATION &amp; GENERAL EXPENDITURES</b>	321,509,208	335,435,783	353,235,294	369,108,048	392,466,308	433,351,781
<b>TRANSFERS (IN)/OUT</b>	13,985,368	9,327,906	14,496,259	19,127,612	20,041,294	5,051,842
<b>TOTAL EDUCATION &amp; GENERAL</b>	335,494,576	344,763,689	367,731,553	388,235,660	412,507,602	438,403,623
<b>Fund Balance Addition/(Reduction)</b>	(1,931,001)	(363,619)	510,514	2,493,804	5,224,929	(3,716,486)
<b>AUXILIARY ENTERPRISES FUNDS</b>	113,576,736	113,529,856	119,247,859	121,483,486	146,320,121	132,849,059
<b>EDUCATION &amp; GENERAL</b>						
Instruction	161,309,582	164,929,489	172,406,800	174,873,161	181,818,508	199,403,471
Research	16,191,895	16,887,440	17,756,500	18,051,552	18,436,199	24,967,108
Public Service	6,061,170	9,089,390	7,022,745	7,435,239	9,999,995	7,631,048
Academic Support	37,495,870	38,977,479	42,299,936	45,034,454	50,126,170	53,136,534
Student Services	32,956,733	37,403,171	38,991,819	39,083,026	41,939,055	41,721,451
Institutional Support	8,634,739	8,385,816	9,390,423	11,448,213	12,700,182	22,152,063
Operation and Maintenance of Physical Plant	38,963,888	40,042,263	41,413,910	44,015,744	48,837,377	47,934,599
Scholarship/Fellowship	19,895,331	19,720,735	23,953,161	29,166,659	28,608,822	36,405,507
<b>EXPENSES AS A PERCENT OF TOTAL</b>						
<b>EDUCATION &amp; GENERAL</b>						
Instruction	48.1%	47.8%	46.9%	45.0%	44.1%	45.5%
Research	4.8%	4.9%	4.8%	4.6%	4.5%	5.7%
Public Service	1.8%	2.6%	1.9%	1.9%	2.4%	1.7%
Academic Support	11.2%	11.3%	11.5%	11.6%	12.2%	12.1%
Student Services	9.8%	10.8%	10.6%	10.1%	10.2%	9.5%
Institutional Support	2.6%	2.4%	2.6%	2.9%	3.1%	5.1%
Operation & Maintenance of Physical Plant	11.6%	11.6%	11.3%	11.3%	11.8%	10.9%
Scholarship/Fellowship	5.9%	5.7%	6.5%	7.5%	6.9%	8.3%

\*Revised

Source: Budget Documents

**Unrestricted Current Revenue  
By Budgetary Function and Revenue Dollars  
Per Full-Time Equivalent Student  
FY 2003-2008**

KNOXVILLE	ACTUAL					Budget
	FY 2003	FY 2004	FY 2005	FY 2006	FY 2007	FY 2008
<b>TOTAL REVENUE</b>	447,140,309	457,929,924	487,489,926	512,212,949	564,052,653	567,536,196
<b>TOTAL EDUCATION &amp; GENERAL REVENUE</b>	333,563,573	344,400,068	368,242,067	390,729,463	417,732,531	434,687,137
<b>TOTAL AUXILIARY REVENUE</b>	113,576,736	113,529,856	119,247,859	121,483,486	146,320,122	132,849,059
<b>EDUCATION &amp; GENERAL REVENUE</b>						
Tuition and Fees	143,393,236	152,240,279	165,276,641	184,458,636	196,523,239	204,485,243
State Appropriations	161,302,900	159,267,300	169,086,200	172,117,000	184,467,600	198,910,100
Grants and Contracts	16,358,858	16,585,584	17,741,920	17,823,534	17,907,970	16,950,000
Sale and Service of Educational Activities	5,164,175	5,370,747	6,722,866	7,767,865	8,021,307	6,856,263
Other Sources	7,344,404	10,936,158	9,414,440	8,562,428	10,812,415	7,485,531
<b>REVENUE DOLLARS PER FULL-TIME EQUIVALENT (FTE) STUDENT</b>						
Revenue dollars per FTE Student	19,695	20,683	21,578	22,144	23,995	23,485
Education and General Revenue dollars per FTE Student	14,692	15,556	16,300	16,892	17,771	17,988
State Appropriation dollars per FTE Student	7,105	7,194	7,484	7,441	7,847	8,231
Number of FTE Students (as of Fall Semester)	22,703 (Fall 2002)	22,140 (Fall 2003)	22,592 (Fall 2004)	23,131 (Fall 2005)	23,507 (Fall 2006)	24,166 (Fall 2007)

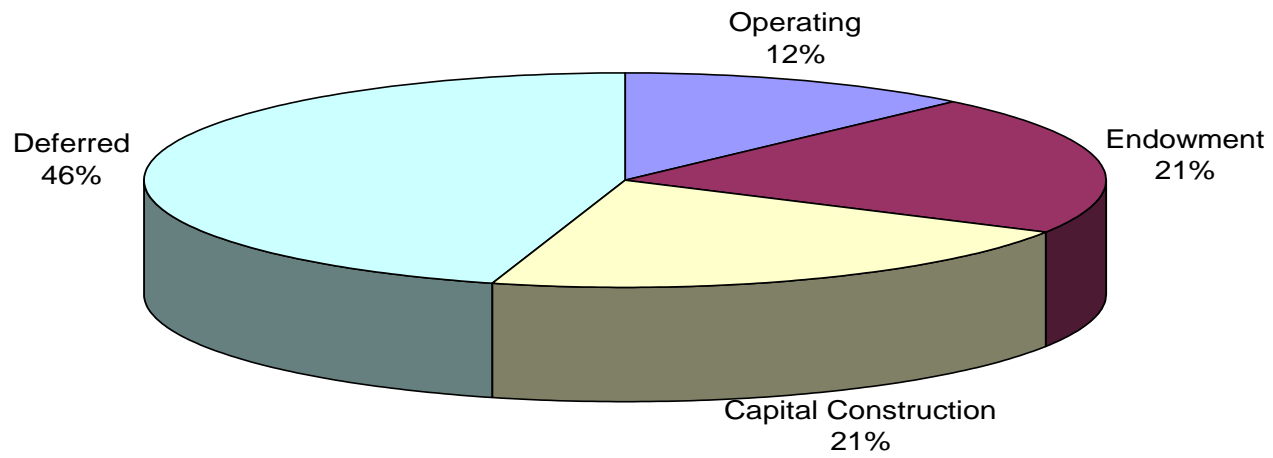
\*Revised

Source: Budget Documents

Notes: Endowment Income only includes income from Land Grant Endowment. Income from endowments created by private gifts are credited to the University of Tennessee System. Beginning in FY 2001, Gifts are reported separately from Grants and Contracts.

**UT KNOXVILLE CAMPAIGN ANALYSIS BY PURPOSE**

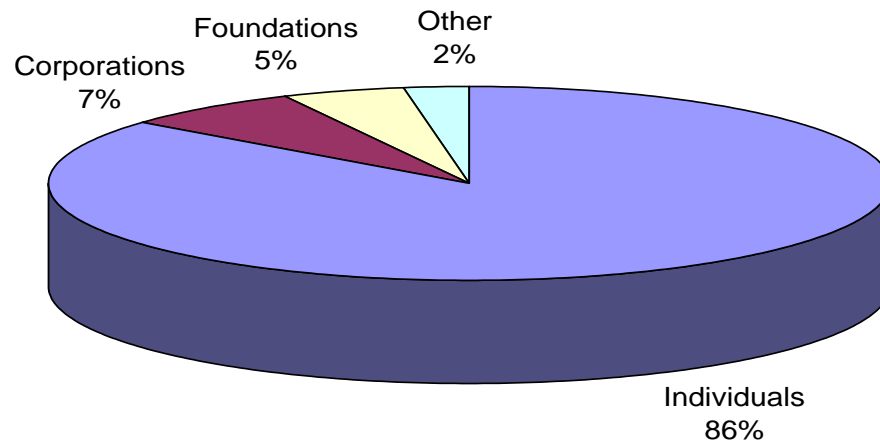
January 1, 2005 – December 31, 2007: \$245,697,309



Source: Office of Advancement Services

**UT KNOXVILLE CAMPAIGN ANALYSIS BY SOURCE**

January 1, 2005 – December 31, 2007: \$245,697,309



Source: Office of Advancement Services

**The Campaign for Tennessee**  
**January 1, 2005 - December 31, 2007**

<b>By Source</b>	<b>UT Knoxville</b>	<b>Agriculture Institute</b>	<b>UT Athletics</b>	<b>Total</b>
Individual	210,814,387	43,580,778	138,869,133	393,264,298
Corporations	16,997,020	5,793,882	25,329,481	48,120,383
Foundations	12,005,908	4,673,679	8,799,553	25,479,140
Other	5,879,995	1,920,300	467,561	8,267,856
January 1, 2005 - December 31, 2007	245,697,309	55,968,640	173,465,728	475,131,677

<b>By Purpose</b>	<b>UT Knoxville</b>	<b>Agriculture Institute</b>	<b>UT Athletics</b>	<b>Total</b>
Operating	29,525,615	14,050,788	62,183,940	105,760,342
Endowment	51,687,490	7,612,396	6,262,659	65,562,545
Capital Construction	52,396,865	4,903,221	68,223,499	125,523,585
Deferred	112,087,340	29,402,234	36,795,631	178,285,205
January 1, 2005 - December 31, 2007	245,697,309	55,968,640	173,465,729	475,131,677

Source: Office of Advancement Services

**Average Salaries of Full-Time Instructional Faculty  
By College and Rank  
FY 2007-2008**

COLLEGE / SCHOOL	ALL RANKS	PROFESSOR	ASSOCIATE PROFESSOR	ASSISTANT PROFESSOR	INSTRUCTOR	LECTURER
<b>ALL COLLEGES</b>	<b>77,071</b>	<b>104,195</b>	<b>77,709</b>	<b>64,356</b>	<b>47,875</b>	<b>38,866</b>
Agricultural Science and Natural Resources	77,525	91,837	70,259	60,237	43,733	*
Architecture & Design	78,776	94,070	80,691	64,277		50,677
Arts and Sciences - Humanities	56,753	84,746	64,198	52,496	*	33,802
Arts and Sciences - Natural Sciences	80,578	108,789	74,227	65,398	*	37,489
Arts and Sciences - Social Sciences	65,328	90,494	70,180	57,338	*	35,512
Business Administration	111,034	142,288	110,835	99,755		66,520
Communication & Information	67,154	99,576	68,288	55,058	*	35,385
Education, Health & Human Sciences	71,645	94,374	69,148	59,187	42,578	42,795
Engineering	98,834	120,088	89,858	78,391	65,984	
Law	119,182	145,219	98,931			
Nursing	66,567	91,556	77,181	62,785	51,685	
Social Work	78,634	122,996	72,848	57,324		*
Space Institute	86,113	99,379	73,514	70,843		
Veterinary Medicine	81,718	101,433	84,977	71,129	41,187	*

Source: IRIS

Updated March 19, 2008

\*If less than three individuals, salaries are not reported



**Median Graduate Assistant Stipends  
FY 1986-2008**

FY	TOTAL ASSISTANTSHIPS		GRADUATE TEACHING ASSOCIATE		GRADUATE TEACHING ASSISTANT		GRADUATE RESEARCH ASSISTANT		GRADUATE ASSISTANT	
	Number of Students	Median Stipend	Number of Students	Median Stipend	Number of Students	Median Stipend	Number of Students	Median Stipend	Number of Students	Median Stipend
1986-87	1,432	6,281	6	5,856	682	6,497	265	6,871	479	5,130
1987-88	1,468	6,535	178	6,846	541	6,697	309	6,953	440	5,335
1988-89	1,581	6,773	193	7,120	553	6,847	279	6,891	556	5,870
1989-90	1,659	7,095	212	7,405	571	7,121	351	7,821	525	5,884
1990-91	1,755	7,620	227	8,265	550	7,651	407	8,259	571	6,618
1991-92	1,727	7,697	247	7,701	542	7,721	440	8,180	498	6,577
1992-93	1,809	7,712	247	7,701	584	7,719	424	8,834	554	6,577
1993-94	1,881	8,077	276	8,247	606	8,005	445	9,652	554	7,041
1994-95	1,928	8,805	336	8,923	585	9,006	426	10,144	581	7,470
1995-96	1,855	8,666	317	8,922	558	8,624	388	9,829	592	7,323
1996-97	1,786	8,926	320	9,230	554	9,386	388	10,110	524	7,282
1997-98	1,731	9,028	307	9,231	557	9,434	354	10,161	513	7,455
1998-99	1,777	9,462	329	9,686	550	9,045	364	11,119	534	7,438
1999-00	1,780	9,956	316	10,074	591	10,196	347	11,583	526	7,730
2000-01	1,762	10,347	285	10,299	584	10,425	338	12,191	555	8,027
2001-02	1,879	11,979	290	12,001	622	11,823	355	12,948	612	8,366
2002-03	2,113	11,993	298	12,005	636	11,989	511	12,577	668	10,010
2003-04	2,217	12,224	306	12,310	681	12,240	573	13,016	657	9,791
2004-05	2,211	12,576	323	12,638	697	12,950	604	13,410	587	9,816
2005-06	2,202	12,800	298	13,094	714	13,338	623	13,742	567	10,110
2006-07	2,210	13,409	331	13,963	728	13,940	606	14,629	545	11,005
2007-08	2,281	13,642	345	13,658	753	14,163	629	14,724	554	10,312

Source: IRIS

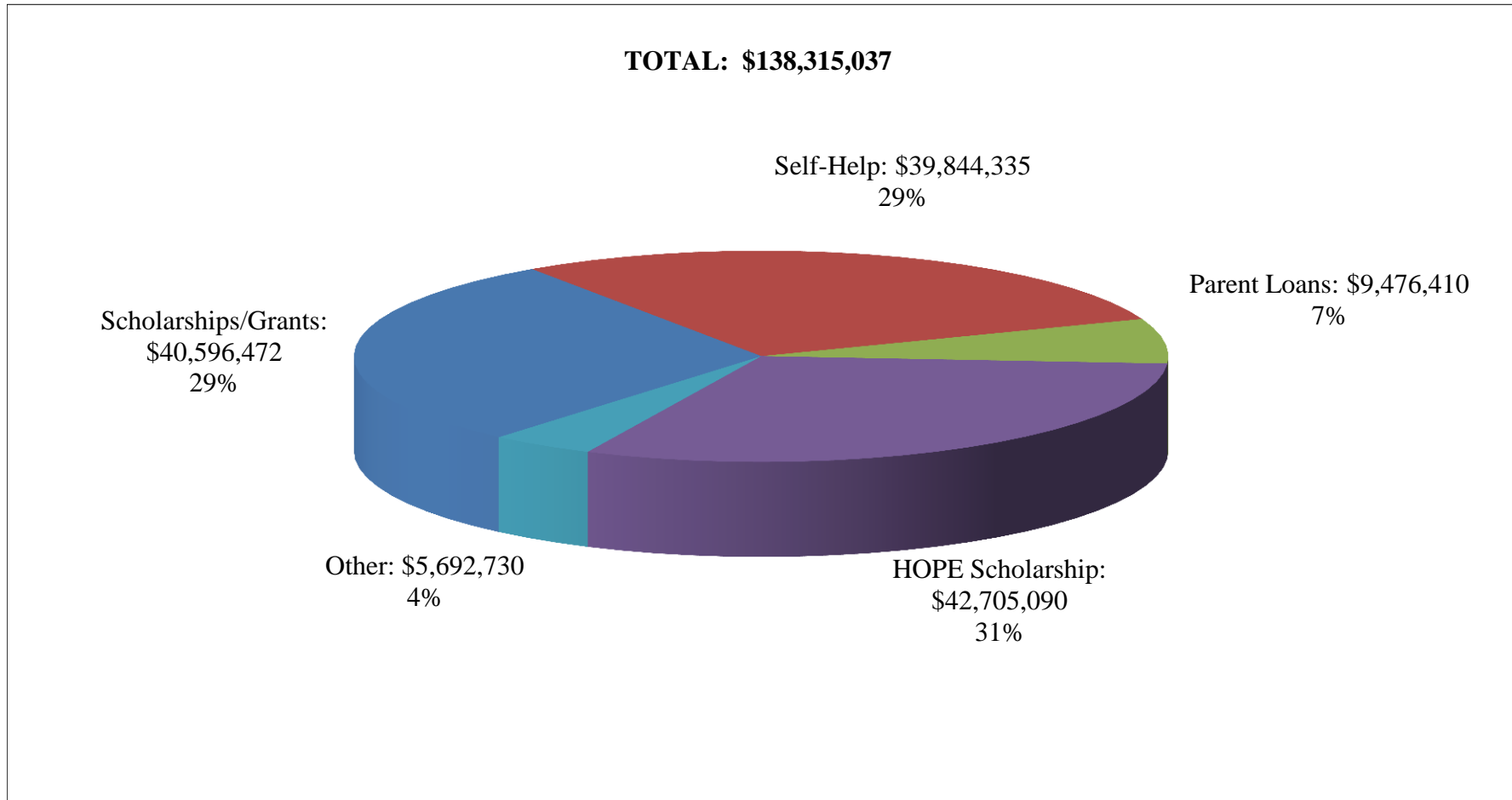
Note: Stipends are equated to a half-time (20-hour week) academic year salary

**Student Tuition  
By Level  
Academic Years  
2004-2008**

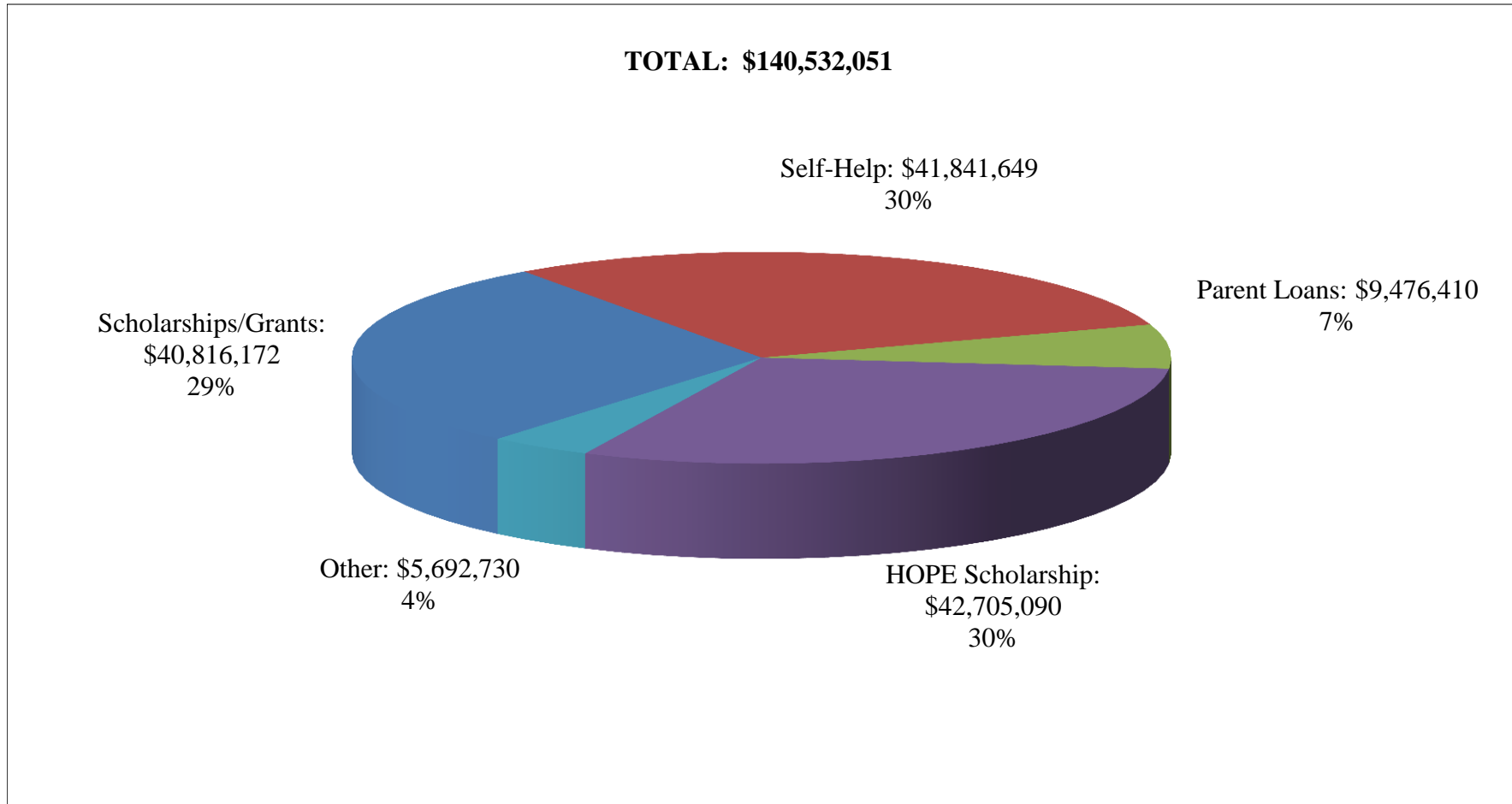
	2003-2004		2004-2005		2005-2006		2006-2007		2007-2008	
	IN-STATE	OUT-OF-STATE	IN-STATE	OUT-OF-STATE	IN-STATE	OUT-OF-STATE	IN-STATE	OUT-OF-STATE	IN-STATE	OUT-OF-STATE
<b>KNOXVILLE CAMPUS</b>										
UNDERGRADUATE	4,450	13,532	4,748	14,528	5,290	16,360	5,622	17,188	5,932	18,174
GRADUATE	5,032	14,114	5,376	15,156	6,000	17,070	6,366	17,932	6,720	18,962
LAW	7,830	19,886	8,396	21,384	9,412	24,106	9,934	25,290	11,502	27,762
VETERINARY MEDICINE	8,934	24,810	10,176	28,396	13,374	37,440	13,374	37,440	14,590	38,656
<b>SPACE INSTITUTE</b>										
GRADUATE	4,550	13,382	5,376	14,295	5,508	16,278	5,754	17,020	6,088	18,030

Source: Bursar's Office

**Need-Based Financial Aid  
Academic Year 2007-2008  
Knoxville Only**



**Need-Based Financial Aid  
Academic Year 2007-2008  
Knoxville, VetMed UTSI**



Source: Office of Financial Aid

**Number and Percent of Occupancy for Student Residence Halls  
And Married/Graduate Student Housing  
Fall 2007**

<b>STUDENT RESIDENCE HALLS (Knoxville)</b>				
<b>HALL NAME</b>	<b>NUMBER OF ROOMS</b>	<b>NUMBER OF BEDS</b>	<b>OCCUPANCY AS OF 10-03-07</b>	<b>PERCENT OCCUPANCY</b>
<b>TOTAL</b>	<b>3,593</b>	<b>7,119</b>	<b>6,817</b>	<b>96%</b>
Apartment Residence Hall	306	1,050	1,013	96%
Clement Hall	353	689	688	100%
Gibbs Hall	116	216	186	86%
Greve Hall	199	358	317	89%
Hess Hall	512	954	946	99%
Humes Hall	260	516	513	99%
Massey Hall	292	582	447	77%
Melrose Hall	224	188	180	96%
Morrill Hall	379	752	740	98%
North Carrick Hall	248	494	493	100%
Reese Hall	260	516	516	100%
South Carrick Hall	271	530	526	99%
Strong Hall	173	274	252	92%

<b>MARRIED/GRADUATE STUDENT HOUSING (Knoxville)</b>				
<b>APARTMENT COMPLEX</b>	<b>NUMBER OF BUILDINGS</b>	<b>NUMBER OF APARTMENTS</b>	<b>OCCUPANCY AS OF 10-03-07</b>	<b>PERCENT OCCUPANCY</b>
<b>TOTAL</b>	<b>38</b>	<b>793</b>	<b>700</b>	<b>88%</b>
Golf Range Apartments	25	398	354	89%
Sutherland Apartments	13	395	346	88%

Source: Department of University Housing

<b>IPEDS Reporting - Capacity</b>	
<b>TOTAL</b>	<b>8,147</b>
UTK	7,912
Health Science Center	196
Space Institute	39

**Main Library  
Holdings and Expenditures  
FY 2003-2007**

CATALOGED MATERIALS	FY 01/02	FY 02/03	FY 03/04	FY 04/05	FY 05/06	FY 02-06 % CHANGE
<b>VOLUMES</b>	2,152,555	2,288,183	2,319,379	2,360,907	2,555,502	18.7
<b>TITLES</b>	1,182,995	1,231,250	1,258,773	1,296,841	1,488,976	25.9
<b>NON-PRINT MATERIALS</b>						
Audio	28,525	30,048	26,638	27,230	28,029	(1.7)
Cartographic	4,339	6,455	6,778	5,866	390,115 *	8,890.9
Film/Video	9,719	10,905	11,290	11,717	12,862	32.3
Graphic	124,153	125,820	123,252	123,000	122,138	(1.6)
Microform	2,476,362	2,566,626	2,609,511	2,620,766	2,649,669	7.0
Computer File/CD-ROM	1,431	1,309	1,508	1,925	2,012	40.6
<b>PERIODICALS AND OTHER SERIALS RECEIVED</b>						
Number of Titles	14,073	14,284	15,286	25,476	22,807	62.1
<b>EXPENDITURES</b>	12,302,454	15,605,403	15,361,265	16,121,770	16,773,816	36.3

\*Note: Previously reported just cartographic items added each year. FY 05/06 is TOTAL cartographic materials.  
Source: Office of the Dean of Libraries

**Law Library  
Holdings and Expenditures  
FY 2003-2007**

CATALOGED MATERIALS	FY 01/02	FY 02/03	FY 03/04	FY 04/05	FY 05/06	FY 02-06 % CHANGE
<b>VOLUMES AND EQUIVALENTS</b>	<b>515,524</b>	<b>529,720</b>	<b>544,317</b>	<b>558,262</b>	<b>571,108</b>	<b>10.8</b>
<b>TITLES</b>	<b>98,975</b>	<b>104,458</b>	<b>109,863</b>	<b>112,208</b>	<b>116,828</b>	<b>18.0</b>
<b>NON-PRINT MATERIALS</b>						
Non-print Titles	39,639	40,555	42,210	42,566	44,133	11.3
Microfilm Reels	1,134	1,148	1,162	1,177	1,192	5.1
Microfiche Units	1,254,502	1,290,236	1,333,062	1,367,040	1,393,679	11.1
Microform Equivalent Volumes	214,754	220,776	227,984	233,820	238,497	11.1
<b>SERIALS</b>						
Serial Titles	6,174	6,274	5,909	5,809	5,855	(5.2)
Number of Serial Subscriptions	6,847	6,981	6,701	6,650	6,733	(1.7)
<b>EXPENDITURES</b>	<b>2,318,174</b>	<b>2,488,537</b>	<b>2,508,020</b>	<b>2,563,047</b>	<b>2,530,986</b>	<b>9.2</b>

Source: College of Law Library

## UT Knoxville Campus Libraries and Centers

	<b>Web Address</b>
	<a href="#">The University of Tennessee Libraries (main page and online databases)</a>
<b>Library</b>	
George F. Devine Music Library John C. Hodges Main Library Webster Pendergrass Agriculture-Veterinary Medicine Library Special Collections Library Social Work Library	<a href="http://www.lib.utk.edu/music/">http://www.lib.utk.edu/music/</a> <a href="http://www.lib.utk.edu/branches/hodges.html">http://www.lib.utk.edu/branches/hodges.html</a> <a href="http://www.lib.utk.edu/agvet/">http://www.lib.utk.edu/agvet/</a> <a href="http://www.lib.utk.edu/spcoll/">http://www.lib.utk.edu/spcoll/</a> <a href="http://www.lib.utk.edu/swn/">http://www.lib.utk.edu/swn/</a>
<b>Center</b>	
Howard H. Baker, Jr. Center for Public Policy at the University of Tennessee, Knoxville University of Tennessee, Knoxville Digital Library Center MPA: Modern Political Archives	<a href="http://bakercenter.utk.edu/">http://bakercenter.utk.edu/</a> <a href="http://diglib.lib.utk.edu/dlc/">http://diglib.lib.utk.edu/dlc/</a> <a href="http://mpa.utk.edu/">http://mpa.utk.edu/</a>

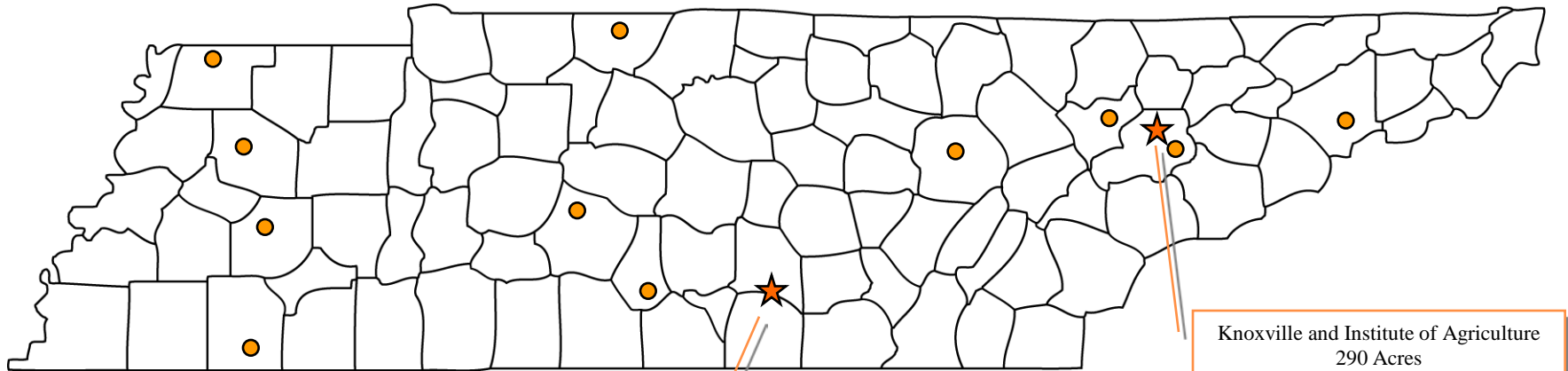


**Space Institute Library  
Holdings and Expenditures  
FY 2003-2007**

CATALOGED MATERIALS	FY 01/02	FY 02/03	FY 03/04	FY 04/05	FY 05/06	FY 02-06 % CHANGE
<b>VOLUMES</b>	<b>75,788</b>	<b>76,075</b>	<b>76,187</b>	<b>76,509</b>	<b>76,605</b>	<b>1.1</b>
<b>COLLECTIONS</b>						
Bound Volumes	24,380	24,556	24,674	24,868	25,092	2.9
Technical Reports	51,407	51,463	51,488	51,499	51,513	0.2
<b>NON-PRINT MATERIALS</b>						
Film/Video	79	79	79	79	81	2.5
Microform	211,865	213,552	213,552	213,552	213,552	0.8
Computer File	64	83	83	83	86	34.4
Other Audio/Visual	154	154	154	154	154	0.0
<b>PERIODICALS AND OTHER SERIALS RECEIVED</b>						
Number of Titles	186	154	148	148	148	(20.4)
<b>EXPENDITURES</b>	<b>215,181</b>	<b>197,348</b>	<b>211,449</b>	<b>207,214</b>	<b>219,833</b>	<b>2.2</b>

Source: Office of the Dean of Libraries

# University of Tennessee, Knoxville Facilities and Acreage Fall 2007



Source: Facilities Services

Space Institute  
365 Acres

Knoxville and Institute of Agriculture  
290 Acres

- ★ Campuses
- Branch Agricultural Experiment Stations (approximately 40,000 acres)

**One Year Retention Rates  
First-Time Full-Time Freshmen  
Fall Terms 1983-2006**

Enrollment Year	Total		Men		Women		Black		White		Other	
	Number	Rate	Number	Rate	Number	Rate	Number	Rate	Number	Rate	Number	Rate
1983	3,150	77.9	1,631	77.9	1,519	77.9	184	75.5	2,874	78.1	92	75.0
1984	3,195	78.0	1,607	77.5	1,588	78.5	175	70.9	2,941	78.4	79	78.5
1985	3,299	78.7	1,694	77.9	1,605	79.6	191	75.4	3,055	79.0	53	77.4
1986	3,503	77.5	1,811	76.9	1,692	78.1	205	78.5	3,246	77.4	52	80.8
1987	3,683	78.6	1,886	77.7	1,797	79.5	181	74.0	3,437	78.8	65	78.5
1988	3,708	78.9	1,959	76.7	1,749	81.3	192	73.4	3,462	79.2	54	74.1
1989	3,296	80.0	1,696	79.4	1,600	80.7	185	80.5	3,045	80.1	66	77.3
1990	3,336	79.5	1,706	78.5	1,630	80.6	239	81.2	3,006	79.1	91	87.9
1991	2,986	81.5	1,540	80.7	1,446	82.4	217	80.7	2,668	81.4	101	86.1
1992	3,136	80.0	1,584	79.3	1,552	80.9	209	78.5	2,815	80.0	112	83.9
1993	2,799	78.6	1,391	77.3	1,408	79.8	175	78.9	2,521	78.4	103	81.6
1994	2,850	75.9	1,470	74.5	1,380	77.4	144	77.1	2,604	75.8	102	75.5
1995	3,427	76.8	1,639	74.8	1,788	78.6	153	83.7	3,141	76.2	133	84.2
1996	3,637	76.7	1,795	74.4	1,842	78.9	192	79.7	3,305	76.4	140	78.6
1997	3,823	78.1	1,882	76.7	1,941	79.4	243	84.0	3,408	77.8	172	76.2
1998	3,747	78.7	1,791	76.7	1,956	80.6	273	78.0	3,336	79.0	138	73.2
1999	4,099	75.4	1,931	71.7	2,168	78.7	328	72.6	3,607	75.8	164	74.4
2000	3,794	78.3	1,840	76.3	1,954	80.3	268	81.5	3,364	77.7	162	85.2
2001	3,898	75.5	1,914	72.1	1,984	78.8	190	75.1	3,405	75.7	203	69.0
2002	3,638	77.8	1,761	76.7	1,877	78.8	321	83.5	3,115	77.5	202	73.3
2003	3,529	78.0	1,721	76.7	1,808	79.3	319	80.3	3,038	77.6	172	82.0
2004	4,395	79.6	2,106	77.5	2,289	81.6	440	81.8	3,726	79.5	229	76.9
2005	4,241	81.7	2,009	81.1	2,232	82.3	444	81.8	3,529	82.0	268	78.4
2006	4,219	84.0	2,050	82.1	2,169	85.7	417	80.3	3,556	84.7	246	79.3

Source: Student Information System

**Four Year Graduation Rates  
First-Time Full-Time Freshmen  
Fall Terms 1983-2003**

Enrollment Year	Total		Men		Women		Black		White		Other	
	Number	Rate	Number	Rate	Number	Rate	Number	Rate	Number	Rate	Number	Rate
1983	3,150	23.0	1,631	17.7	1,519	28.8	184	10.9	2,874	23.8	92	25.0
1984	3,195	24.9	1,607	19.7	1,588	30.1	175	9.7	2,941	25.6	79	30.4
1985	3,299	24.1	1,694	19.7	1,605	28.8	191	11.0	3,055	24.8	53	30.2
1986	3,503	22.2	1,811	17.7	1,692	27.0	205	8.8	3,246	23.0	52	26.9
1987	3,683	21.4	1,886	14.5	1,797	28.6	181	7.7	3,437	22.0	65	26.2
1988	3,708	22.8	1,959	16.5	1,749	29.8	192	10.4	3,462	23.5	54	22.2
1989	3,296	24.7	1,696	19.6	1,600	30.1	185	8.7	3,045	25.6	66	30.3
1990	3,336	23.6	1,706	17.4	1,630	30.2	239	12.1	3,006	24.4	91	27.5
1991	2,986	25.1	1,540	17.3	1,446	33.5	217	21.2	2,668	25.1	101	34.7
1992	3,136	22.6	1,584	16.8	1,552	28.6	209	13.9	2,815	23.2	112	24.1
1993	2,799	24.1	1,391	17.3	1,408	30.8	175	15.4	2,521	24.7	103	23.3
1994	2,850	23.6	1,470	15.5	1,380	32.3	144	12.5	2,604	24.4	102	18.6
1995	3,427	26.8	1,639	20.2	1,788	32.9	153	19.0	3,141	27.0	133	31.6
1996	3,637	28.4	1,795	19.9	1,842	36.8	192	17.7	3,305	29.0	140	30.7
1997	3,823	27.5	1,882	19.3	1,941	35.4	243	20.6	3,408	28.0	172	26.2
1998	3,747	26.7	1,791	16.7	1,956	35.9	273	18.7	3,336	27.6	138	21.7
1999	4,099	28.7	1,931	18.9	2,168	37.4	328	24.7	3,607	29.1	164	26.2
2000	3,794	30.6	1,840	22.3	1,954	38.4	268	28.0	3,364	30.5	162	37.0
2001	3,898	29.4	1,914	21.2	1,984	37.4	290	20.7	3,405	30.4	203	25.6
2002	3,636	30.0	1,759	21.0	1,877	38.4	321	26.2	3,113	30.8	202	23.3
2003	3,525	31.2	1,719	23.2	1,806	38.9	319	19.1	3,034	32.6	172	30.2

Source: Student Information System and Academic Inventory

**Five Year Graduation Rates  
First-Time Full-Time Freshmen  
Fall Terms 1983-2002**

Enrollment Year	Total		Men		Women		Black		White		Other	
	Number	Rate	Number	Rate	Number	Rate	Number	Rate	Number	Rate	Number	Rate
1983	3,150	48.5	1,631	47.0	1,519	50.2	184	34.8	2,874	49.4	92	48.9
1984	3,195	45.6	1,607	42.1	1,588	49.1	175	30.3	2,941	46.3	79	50.6
1985	3,299	47.5	1,694	45.5	1,605	49.6	191	28.3	3,055	48.7	53	49.1
1986	3,503	45.0	1,811	41.7	1,692	48.5	205	32.2	3,246	45.9	52	40.4
1987	3,683	45.3	1,886	41.1	1,797	49.6	181	30.9	3,437	45.9	65	53.8
1988	3,708	49.1	1,959	44.1	1,749	54.7	192	36.5	3,462	49.8	54	46.3
1989	3,296	48.4	1,696	44.7	1,600	52.3	185	34.1	3,045	49.2	66	53.0
1990	3,336	48.5	1,706	44.1	1,630	53.1	239	33.9	3,006	49.5	91	55.0
1991	2,986	48.9	1,540	42.3	1,446	56.0	217	39.2	2,668	49.7	101	49.5
1992	3,136	48.4	1,584	44.6	1,552	52.3	209	34.9	2,815	49.4	112	48.2
1993	2,799	49.7	1,391	45.9	1,408	53.4	175	35.4	2,521	50.6	103	51.5
1994	2,850	50.7	1,470	44.6	1,380	54.6	144	36.1	2,604	50.7	102	34.3
1995	3,427	52.4	1,639	46.3	1,788	58.1	153	44.4	3,141	52.6	133	58.6
1996	3,637	51.8	1,795	45.7	1,842	57.8	192	39.1	3,305	52.4	140	55.0
1997	3,823	53.1	1,882	47.0	1,941	59.1	243	47.7	3,408	53.8	172	47.1
1998	3,747	53.3	1,491	46.0	1,956	60.0	273	45.4	3,336	54.0	138	52.2
1999	4,099	52.1	1,931	45.9	2,168	57.7	328	47.9	3,607	52.5	167	52.4
2000	3,794	54.8	1,840	49.9	1,954	59.4	268	50.4	3,364	54.8	162	61.1
2001	3,896	53.1	1,913	46.1	1,983	59.8	290	43.1	3,403	54.3	203	46.8
2002	3,636	54.7	1,759	49.5	1,877	59.7	321	52.3	3,113	55.3	202	49.0

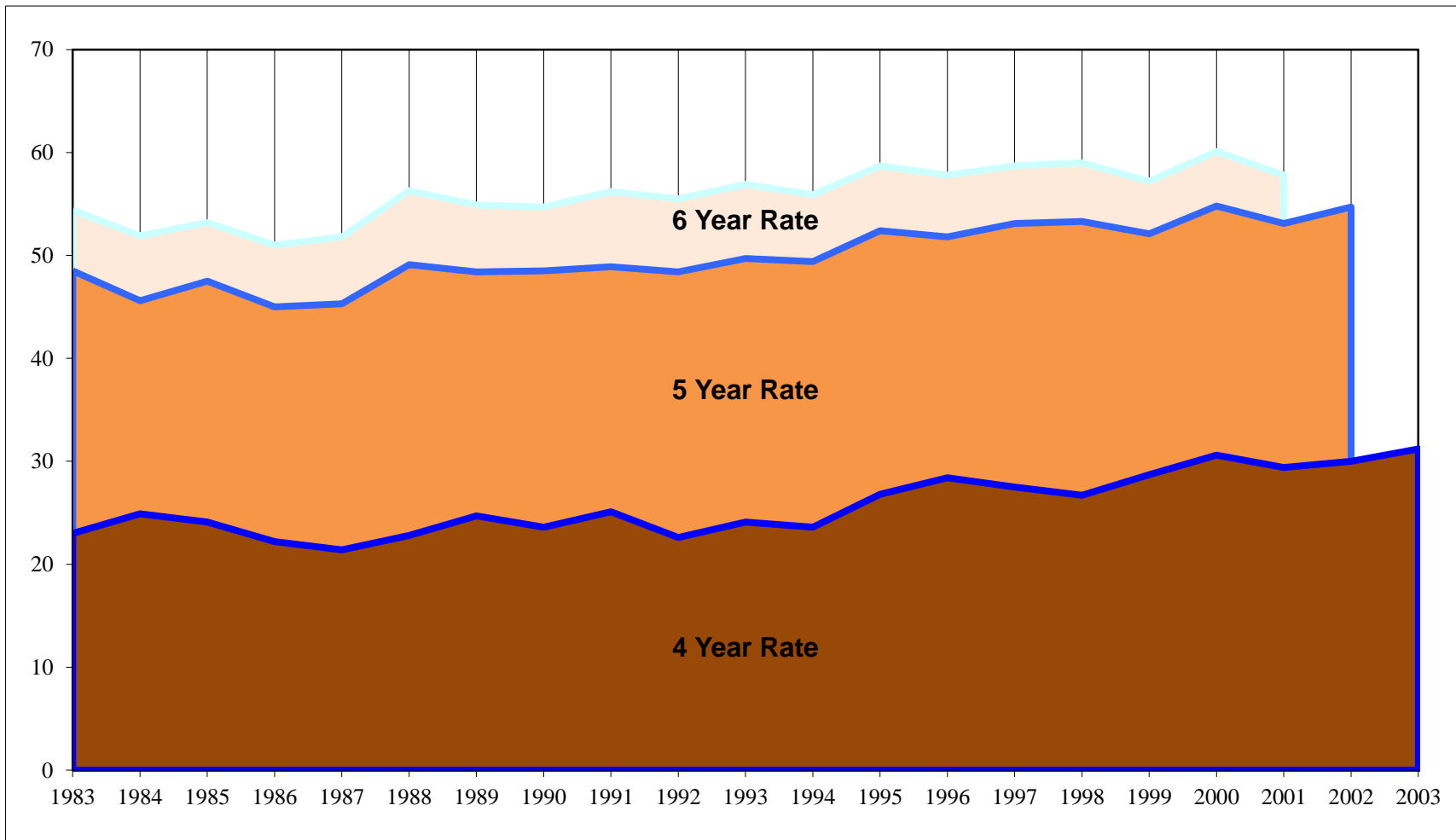
Source: Student Information System and Academic Inventory

**Six Year Graduation Rates  
First-Time Full-Time Freshmen  
Fall Terms 1983-2001**

Enrollment Year	Total		Men		Women		Black		White		Other	
	Number	Rate	Number	Rate	Number	Rate	Number	Rate	Number	Rate	Number	Rate
1983	3,150	54.4	1,631	54.0	1,519	55.0	184	43.5	2,874	55.2	92	52.2
1984	3,195	51.9	1,607	50.0	1,588	53.9	175	40.0	2,941	52.5	79	57.0
1985	3,299	53.2	1,694	52.0	1,605	54.5	191	36.1	3,055	54.2	53	56.6
1986	3,503	51.0	1,811	48.8	1,692	53.3	205	42.0	3,246	51.7	52	42.3
1987	3,683	51.8	1,886	49.2	1,797	54.6	181	42.5	3,437	52.1	65	63.1
1988	3,708	56.3	1,959	52.8	1,749	60.2	192	46.4	3,462	56.9	54	51.9
1989	3,296	54.9	1,696	53.1	1,600	56.8	185	42.7	3,045	55.5	66	62.1
1990	3,336	54.7	1,706	52.2	1,630	57.3	239	41.4	3,006	55.7	91	58.2
1991	2,986	56.2	1,540	51.7	1,446	60.9	217	46.5	2,668	56.9	101	58.4
1992	3,136	55.5	1,584	54.2	1,552	56.9	209	44.0	2,815	56.5	112	53.6
1993	2,799	56.9	1,391	54.9	1,408	58.9	175	45.1	2,521	57.4	103	64.1
1994	2,850	55.2	1,470	52.1	1,380	58.4	144	43.0	2,604	56.2	102	46.6
1995	3,427	58.7	1,639	54.1	1,788	63.0	153	52.9	3,141	58.8	133	62.4
1996	3,637	57.8	1,795	53.3	1,842	62.3	192	46.3	3,305	58.4	140	55.4
1997	3,823	58.7	1,882	54.1	1,941	63.2	243	53.9	2,408	59.2	172	57.0
1998	3,747	59.0	1,491	53.1	1,956	64.3	273	53.5	3,336	59.4	138	58.7
1999	4,099	57.2	1,931	52.4	2,168	61.4	328	54.0	3,607	57.5	164	57.3
2000	3,794	60.1	1,840	56.8	1,954	63.2	268	58.2	3,364	59.9	162	66.7
2001	3,896	57.8	1,913	52.2	1,983	61.6	290	46.4	3,403	58.9	203	55.2

Source: Student Information System and Academic Inventory

**Graduation Rates  
First-Time Full-Time Freshmen  
Fall Terms 1983-2003**



Source: Student Information System and Academic Inventory

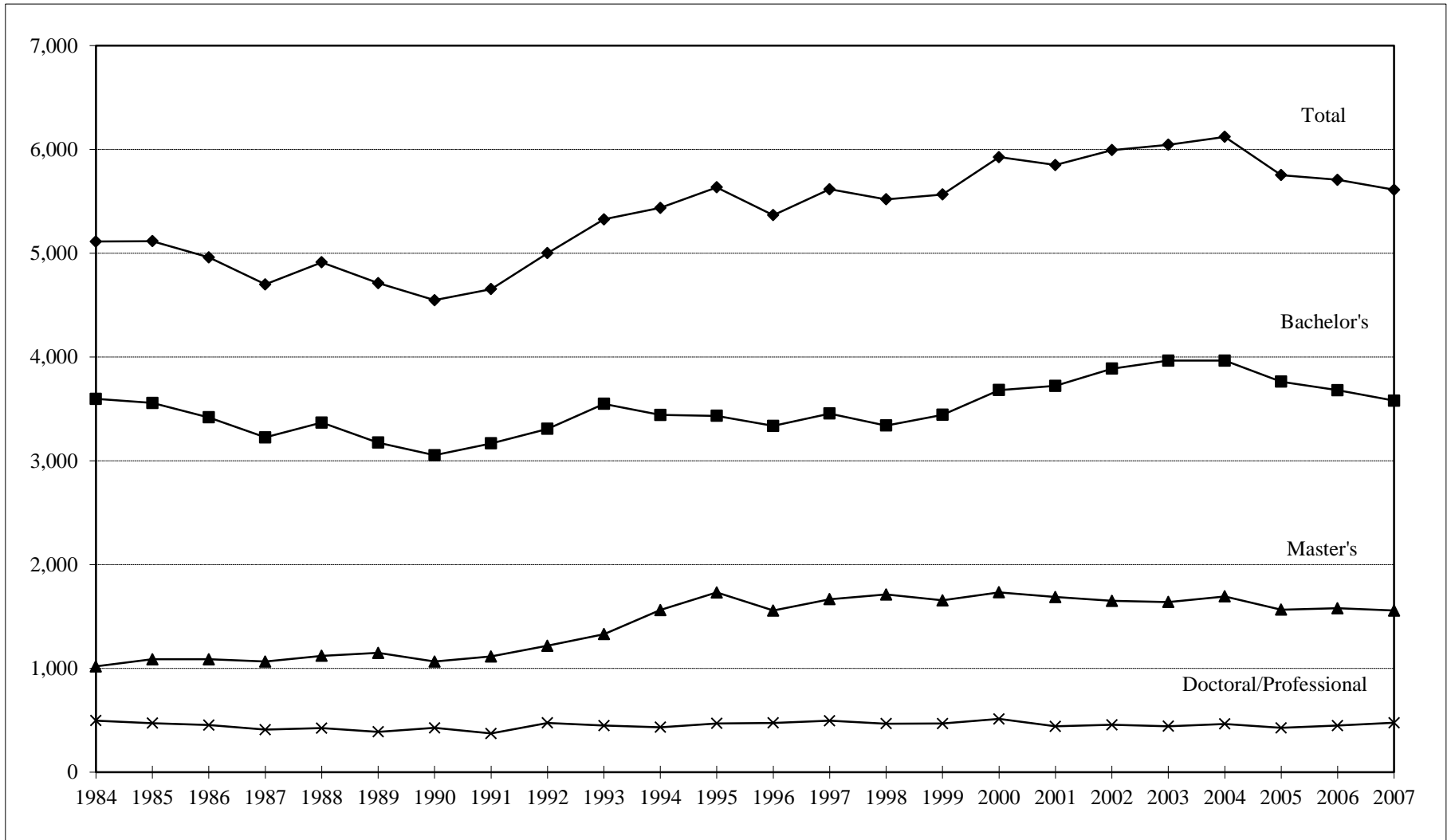
**Summary of Degrees Conferred  
By Discipline  
FY 2003-2007**

	BACHELOR'S						MASTER'S					DOCTORAL/PROFESSIONAL				
	02-03	02-03	03-04	04-05	05-06	06-07	02-03	03-04	04-05	05-06	06-07	02-03	03-04	04-05	05-06	06-07
<b>DEGREES AWARDED</b>	<b>3,965</b>	<b>3,965</b>	<b>3,965</b>	<b>3,762</b>	<b>3,680</b>	<b>3,579</b>	<b>1,639</b>	<b>1,693</b>	<b>1,565</b>	<b>1,579</b>	<b>1,557</b>	<b>442</b>	<b>464</b>	<b>426</b>	<b>448</b>	<b>476</b>
<b>DOCTORAL</b>												<b>216</b>	<b>248</b>	<b>228</b>	<b>236</b>	<b>260</b>
<b>PROFESSIONAL</b>												<b>226</b>	<b>216</b>	<b>198</b>	<b>212</b>	<b>216</b>
<b>COLLEGE/SCHOOL</b>																
Agricultural Sciences & Natural Resources	225	225	188	192	169	152	55	58	66	53	52	3	11	14	10	11
Architecture & Design	77	77	74	51	59	78	15	6	11	8	15	0	0	0	0	0
Arts & Sciences	1,551	1,551	1,618	1,633	1,618	1,558	250	253	218	248	239	85	108	80	105	114
Business Administration	825	825	761	730	716	741	277	288	287	251	276	9	13	13	11	17
Communication & Information	397	397	379	355	377	329	94	89	98	86	100	8	5	3	5	9
Education, Health & Human Sciences	465	465	483	376	327	323	567	578	479	499	441	73	63	63	52	47
Engineering	280	280	312	286	270	270	121	147	150	160	175	28	31	36	38	47
Intercollegiate Programs	0	0	0	0	0	0	22	23	21	22	21	3	9	12	5	7
Law	0	0	0	0	0	0	0	0	0	0	0	161	151	136	147	152
Nursing	110	110	123	117	118	110	37	44	39	57	57	1	3	3	5	4
Social Work	35	35	27	22	26	18	201	207	196	195	181	6	5	4	5	4
Veterinary Medicine	0	0	0	0	0	0	0	0	0	0	0	65	65	62	65	64

Source: Academic Inventory



**Summary of Degrees Conferred  
By Level  
FY 1984-2007**



Source: Academic Inventory

**Degrees Awarded by Major  
FY 1996-2007**

Major	Degree Awarded	1996-97	1997-98	1998-99	2000-01	2001-02	2002-03	2003-04	2004-05	2005-06	2006-07
Accounting	Bachelor's	112	102	99	184	144	167	163	138	138	135
	Master's	74	66	80	74	82	81	80	78	63	65
Advertising	Bachelor's	56	48	52	83	97	108	88	76	88	85
Aerospace Engineering	Bachelor's	10	6	3	11	9	11	19	24	21	21
	Master's	9	3	7	4	4	6	6	3	5	10
	PhD	3	2	0	1	1	3	0	1		1
Agricultural & Extension Education	Bachelor's	10	9	7	9	11	10	6	6	12	13
	Master's	7	9	7	11	11	3	9	10	6	7
Agricultural Economics & Business	Bachelor's	21	14	20	22	15	13	26	22	14	15
	Master's	8	10	3	12	6	8	5	11	10	9
	PhD	3	3	3	0	0		0	0		
Agricultural Mechanization	Bachelor's	0	0	1	0	0	0	0	0	0	0
Animal Science	Bachelor's	50	46	40	61	56	56	49	47	53	52
	Master's	10	5	4	7	6	4	5	2	2	6
	PhD	2	1	4	0	6	1	6	0		4
Anthropology	Bachelor's	37	47	38	38	45	55	49	57	65	44
	Master's	16	9	13	7	11	10	7	7	9	11
	PhD	2	8	6	6	6	2	5	6	6	2
Architecture	Bachelor's	45	37	47	67	40	56	56	30	48	64
	Master's	1	5	5	16	5	15	6	11	8	15
Area, Ethnic & Cultural Studies	Bachelor's	40	47	36	35	59	57	52	68	44	54
Art History	Bachelor's	8	4	9	8	13	11	13	5	4	9
Art Education	Master's	1	0	0	0	0	0	0	0	0	0
Audiology	Bachelor's	4	4	9	11	10	4	5	9	7	7
	Master's	11	9	14	16	15	11	3	0	20	7
	PhD							4	14	4	7

continued

**Degrees Awarded by Major  
FY 1996-2007**

Major	Degree Awarded	1996-97	1997-98	1998-99	2000-01	2001-02	2002-03	2003-04	2004-05	2005-06	2006-07
Aviation Systems	Master's								19	20	19
Biochemistry & Cellular & Molecular Biology	Bachelor's	15	16	16	1	0	1	0	0	0	0
	Master's	2	4	0	5	6	2	4	3	1	1
	PhD	3	5	2	3	5	3	4	2	6	3
Biological Sciences	Master's	13	13	8	0	2	2	3	0	3	3
	PhD	7	10	8	3	4	1	2	4	3	4
Biology	Bachelor's	118	121	145	129	107	119	151	126	138	168
Biosystems Engineering	Bachelor's	8	11	6	7	6	7	3	11	3	6
	Master's	3	0	2	5	3	1	4	2	4	6
	PhD	1	2	2	1	1	0	2	1	3	1
Biosystems Engineering Technology	Master's	6	7	4	0	6	3	5	0	0	0
Botany	Bachelor's	9	5	4	2	0	0	0	0	0	0
	Master's	7	2	3	4	0	3	1	1	2	1
	PhD	2	2	0	1	4	3	3	2		1
Business Administration	Bachelor's	55	60	78	90	95	107	81	83	82	80
	Master's	92	109	138	182	164	177	177	190	169	188
	PhD	9	11	5	9	5	5	10	6	9	12
Business/Marketing Education	Bachelor's	23	29	16	3	0	0	0	0	0	0
Chemical Engineering	Bachelor's	57	37	27	42	27	28	24	19	16	17
	Master's	15	3	9	10	4	8	5	5	6	7
	PhD	10	3	3	0	3	3	5	1	5	2
Chemistry	Bachelor's	13	11	14	13	16	18	22	11	16	11
	Master's	7	10	7	5	3	5	3	2	3	7
	PhD	14	6	14	9	10	12	12	9	14	13
Child Development	Bachelor's	56	41	44	49	73	88	78	75	59	60
	Master's	13	23	11	23	30	32	31	20	31	36
Civil Engineering	Bachelor's	63	65	73	61	48	68	46	46	60	59
	Master's	30	18	20	28	22	20	22	29	27	35
	PhD	7	2	3	3	1	3	7	6	8	5

continued

**Degrees Awarded by Major  
FY 1996-2007**

Major	Degree Awarded	1996-97	1997-98	1998-99	2000-01	2001-02	2002-03	2003-04	2004-05	2005-06	2006-07
Classics	Bachelor's	2	2	5	7	7	2	6	16	10	6
College Student Personnel	Master's	7	16	13	11	16	8	17	8	13	20
Communications	Bachelor's								7	49	67
	Master's	18	31	39	27	26	35	29	18	15	24
	PhD	7	6	6	5	8	8	5	3	5	9
Comparative & Experimental Medicine	Master's	0	3	2	1	3	2	1	2	2	2
	PhD	3	6	6	4	5	3	4	9	2	1
Computer Engineering	Bachelor's	0	0	0	0	13	20	25	19	18	14
	Master's	0	0	0	0	0	0	0	0	1	8
	PhD	0	0	0	0	0	0	0	0	0	3
Computer Science	Bachelor's	20	29	25	35	45	45	40	30	21	26
	Master's	21	23	32	23	27	30	29	26	17	18
	PhD	4	5	3	2	1	2	3	0	3	5
Curriculum & Instruction	Master's	309	195	9	0	0	0	0	0	16	8
	PhD	12	3	0	0	0	0	0	0	2	1
Ecology & Evolutionary Biology	Bachelor's	0	0	0	1	1	0	0	0	0	0
	Master's	9	8	2	7	4	4	7	1	2	6
	PhD	3	3	3	8	3	6	4	2	3	8
Economics (CAS)	Bachelor's	55	60	57	77	92	83	100	63	59	60
Economics (CBA)	Bachelor's	3	7	10	11	8	9	4	10	9	6
	Master's	5	7	2	7	3	3	11	2	5	5
	PhD	4	4	5	7	3	3	3	5	1	2
Education Administration & Policy Studies	Master's	20	10	9	10	14	7	10	7	5	6
	PhD	16	7	7	7	2	2	7	9	10	7
Education	Master's	0	130	343	367	314	344	355	300	258	212
	PhD	38	37	28	42	54	48	43	35	28	27
Educational Psychology	Master's	32	33	42	36	48	34	43	34	36	41
	PhD	0	0	0	0	3	0	3	4	0	0

continued

**Degrees Awarded by Major  
FY 1996-2007**

Major	Degree Awarded	1996-97	1997-98	1998-99	2000-01	2001-02	2002-03	2003-04	2004-05	2005-06	2006-07
Electrical Engineering	Bachelor's	63	62	52	52	50	44	56	40	30	35
	Master's	23	14	17	14	11	26	42	30	44	36
	PhD	5	3	2	7	4	4	4	8	4	8
Electronic Media	Bachelor's	82	90	90	95	86	82	86	78	44	4
Engineering Physics	Bachelor's	2	1	1	3	1	1	3	3	2	0
Engineering Science	Bachelor's	19	21	15	21	23	17	30	34	24	19
	Master's	12	6	17	5	7	4	8	11	11	8
	PhD	6	6	3	4	2	4	1	0	2	1
English	Bachelor's	139	146	160	155	162	147	153	163	134	129
	Master's	15	22	16	12	18	24	22	20	10	24
	PhD	7	11	14	3	8	8	7	2	5	10
Entomology & Plant Pathology	Master's	4	13	5	7	4	8	3	8	3	4
Environmental Engineering	Master's	34	25	21	9	9	13	9	18	6	10
Environmental & Soil Sciences	Master's										1
Exercise Science	Bachelor's	47	47	35	54	48	29	38	37	36	53
	Master's							12	11	5	12
Family Studies	Bachelor's	17	38	47	41	38	34	41	25	23	22
Finance	Bachelor's	132	116	136	146	135	150	137	153	151	175
Food Science & Technology	Bachelor's	6	5	15	6	12	11	11	7	10	8
	Master's	7	6	9	6	6	7	4	11	4	2
	PhD	5	1	2	1	3	0	1	2	1	2
Forestry	Bachelor's	26	19	29	16	21	18	18	14	17	12
	Master's	3	2	9	8	5	3	8	8	6	3
French	Bachelor's	9	9	12	14	12	12	13	18	17	6
	Master's	4	1	10	1	2	5	6	2	3	6
Geography	Bachelor's	22	19	21	16	19	23	26	34	37	27
	Master's	11	6	3	5	6	10	11	6	6	8
	PhD	2	3	2	3	2	2	3	2	3	4

continued

**Degrees Awarded by Major  
FY 1996-2007**

Major	Degree Awarded	1996-97	1997-98	1998-99	2000-01	2001-02	2002-03	2003-04	2004-05	2005-06	2006-07
Geology	Bachelor's	15	11	4	10	11	12	10	3	19	8
	Master's	8	6	8	8	10	5	6	5	12	7
	PhD	4	3	1	2	4	3	1	0	6	4
German	Bachelor's	10	9	9	10	7	4	6	13	5	8
	Master's	3	3	2	3	5	3	1	3	1	1
Graphic Design	Bachelor's	23	25	21	31	23	8	24	14	12	15
Health Education	Bachelor's	13	15	9	11	6	7	10	5	10	1
	Master's	11	9	5	4	7	1	1	2	1	0
	PhD	2	4	1	1	1	0	0	0		0
History	Bachelor's	71	93	82	96	84	78	98	93	78	91
	Master's	9	11	12	3	9	4	10	13	10	11
	PhD	7	3	7	1	4	5	2	2	4	0
Hotel & Restaurant Management	Bachelor's	33	45	37	29	41	26	28	19	25	23
	Master's	8	0	2	0	0	0	0	0		0
Human Ecology Education	Bachelor's	4	1	0	0	0	0	0	0	0	0
Human Ecology	Master's	3	5	5	1	0	0	0	0	0	0
	PhD	26	22	16	20	26	23	10	15	12	12
Human Performance & Sports Studies	Bachelor's	5	2	2	0	0	0	0	0	1	0
	Master's	54	57	71	71	78	49	47	40	54	41
Human Resource Development	Bachelor's	60	29	43	39	50	56	52	27	24	10
	Master's	44	44	33	27	24	32	23	3	3	12
Human Services	Bachelor's	26	20	27	18	21	23	29	10	4	1
Industrial & Organizational Psychology	Master's	0	0	0	0	0	0	0	0	0	0
	PhD	11	1	3	5	3	0	5	3	3	6
Industrial Education	Bachelor's	0	0	0	10	3	0	1	0	0	0
Industrial Engineering	Bachelor's	30	38	33	36	37	24	26	29	21	11
	Master's	35	32	23	44	30	20	16	19	10	18
	PhD									6	1

continued

**Degrees Awarded by Major  
FY 1996-2007**

Major	Degree Awarded	1996-97	1997-98	1998-99	2000-01	2001-02	2002-03	2003-04	2004-05	2005-06	2006-07
Information Sciences	Master's	46	50	35	78	52	59	60	80	71	76
Interior Design	Bachelor's	13	16	18	21	16	21	18	21	11	14
	Master's	0	4	3	0	0	0	0	0	0	0
Italian	Bachelor's	1	1	1	2	4	2	1	0	4	1
Journalism	Bachelor's	69	66	94	109	139	168	157	135	151	146
Law	JD	134	149	155	144	154	161	151	136	147	152
Logistics & Transportation	Bachelor's	110	103	132	152	135	174	115	111	106	122
Management Science	Master's	7	4	4	4	2	5	6	7	5	2
	PhD	4	1	3	2	0	1	0	2	1	3
Marketing	Bachelor's	81	78	108	145	135	152	149	150	155	136
Materials Science & Engineering	Bachelor's	7	8	6	6	8	6	3	5	7	2
	Master's					6	5	7	8	13	7
	PhD					0	2	8	11	8	18
Mathematics	Bachelor's	26	19	25	18	15	15	20	19	24	26
	Master's	21	15	16	12	14	9	13	11	19	5
	PhD	7	4	4	6	3	2	4	2	4	4
Mechanical Engineering	Bachelor's	70	79	59	62	58	50	67	57	49	64
	Master's	20	9	16	16	16	10	17	18	15	18
	PhD	0	5	4	6	4	2	1	3	2	7
Medical Technology	Bachelor's	11	5	5	5	8	5	7	4	6	1
Metallurgical Engineering	Master's	6	2	7	6	4	0	0	0	0	0
	PhD	4	5	4	1	2	1	0	0	0	0
Microbiology	Bachelor's	15	15	14	13	3	0	0	0	0	0
	Master's	1	3	4	5	3	2	2	4	2	0
	PhD	5	8	1	6	1	1	5	2	4	2

continued

**Degrees Awarded by Major  
FY 1996-2007**

Major	Degree Awarded	1996-97	1997-98	1998-99	2000-01	2001-02	2002-03	2003-04	2004-05	2005-06	2006-07
Modern Foreign Languages	PhD	2	2	1	2	2	4	5	1	3	3
Multi/Interdisciplinary Studies	Bachelor's	121	117	89	44	64	36	39	37	36	20
	Master's	11	17	12	22	14	20	22	0	0	0
Music Education	Bachelor's	0	0	0	0	0	0	0	0	0	0
Music	Bachelor's	20	27	25	30	36	36	37	22	30	33
	Master's	20	28	14	15	26	24	27	33	30	28
Natural Resources	PhD								7	3	2
Nuclear Engineering	Bachelor's	12	11	7	0	10	11	13	10	22	28
	Master's	8	12	9	4	9	7	13	6	20	14
	PhD	5	6	7	6	2	5	4	4	0	1
Nursing	Bachelor's	101	104	91	112	120	110	123	117	118	110
	Master's	48	42	51	36	40	37	44	39	57	57
	PhD	1	2	7	3	5	1	3	3	5	4
Nutrition	Bachelor's	22	8	10	16	15	11	8	19	13	19
	Master's	11	9	12	16	14	9	4	10	11	13
Ornamental Horticulture	Bachelor's	45	42	44	65	56	40	14	3	1	0
	Master's	3	5	6	6	2	1	3	0	0	0
Philosophy	Bachelor's	8	8	10	7	20	13	17	16	27	22
	Master's	8	4	3	6	9	5	3	4	10	5
	PhD	1	4	7	3	4	4	3	2	0	5
Physics	Bachelor's	4	4	2	3	7	4	3	7	11	11
	Master's	7	7	6	1	6	9	4	9	6	11
	PhD	8	8	4	13	7	7	7	4	10	14
Planning	Master's	11	35	16	21	16	20	15	4	3	8
Plant Science	Bachelor's	43	42	33	12	17	46	50	57	41	29
	Master's	12	6	5	7	7	7	2	7	12	7
	PhD	3	0	6	3	1	2	2	4	3	2

continued



**Degrees Awarded by Major  
FY 1996-2007**

Major	Degree Awarded	1996-97	1997-98	1998-99	2000-01	2001-02	2002-03	2003-04	2004-05	2005-06	2006-07
Political Science	Bachelor's	111	102	102	97	142	157	151	160	200	188
	Master's	6	4	8	2	7	4	4	7	10	5
	PhD	6	9	7	1	7	4	1	6	4	3
Polymer Engineering	Master's	1	2	2	8	5	2	2	3	2	4
	PhD	1	0	3	3	0	1	1	2	3	0
Psychology	Bachelor's	293	265	268	299	358	392	388	408	410	399
	Master's	13	10	5	8	10	4	7	5	5	7
	PhD	14	6	20	17	11	12	23	16	20	18
Public Administration	Bachelor's	7	6	2	4	8	5	4	5	9	13
	Master's	6	10	10	6	12	5	14	8	8	13
Public Health	Bachelor's	1	0	0	0	0	0	0	0	0	0
	Master's	15	23	23	17	28	24	16	22	34	24
Public Relations	BA									3	20
Recreation & Tourism Management	Bachelor's	33	28	29	50	43	40	32	23	21	24
	Master's	11	16	10	8	15	11	11	12	15	15
Rehabilitation Counseling	Master's	16	15	9	0	0	0	0	0	0	0
Religious Studies	Bachelor's	10	12	11	7	8	14	11	10	10	7
Retail & Consumer Sciences	Bachelor's	62	65	66	63	57	54	64	50	34	34
	Master's	0	3	6	5	7	5	2	2	5	3
Russian	Bachelor's	1	4	3	5	1	1	5	3	0	1
Safety Education & Service	Master's	8	10	13	0	2	11	6	8	12	3
Social Work	Bachelor's	34	24	31	18	30	35	27	22	26	18
	Master's	179	170	130	170	187	201	207	196	195	181
	PhD	1	6	5	3	3	6	5	4	5	4
Sociology	Bachelor's	75	91	106	100	123	98	112	134	118	99
	Master's	5	11	10	2	4	4	2	4	7	2
	PhD	4	2	3	6	3	4	7	1	2	1

continued

**Degrees Awarded by Major  
FY 1996-2007**

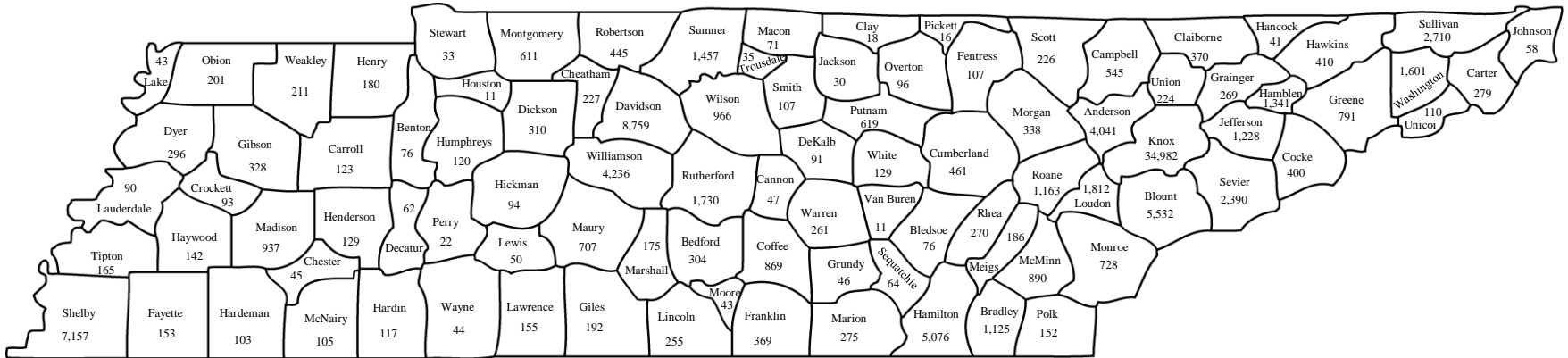
Major	Degree Awarded	1996-97	1997-98	1998-99	2000-01	2001-02	2002-03	2003-04	2004-05	2005-06	2006-07
Spanish	Bachelor's	18	16	25	29	39	45	53	45	38	32
	Master's	3	5	5	4	5	3	8	6	12	6
Special Education	Bachelor's	40	28	23	26	28	35	22	23	22	24
	Master's	44	47	15	2	0	0	0	0	0	0
Speech Communications	Bachelor's	45	46	53	43	33	39	48	59	42	7
Speech Pathology	Bachelor's	37	36	42	29	37	36	21	26	25	32
	Master's	47	72	64	38	34	25	15	23	18	20
Speech Pathology & Hearing Science	PhD	1	2	2	0	3	0	3	1	1	3
Sports Management	Bachelor's	22	32	44	50	68	62	80	63	55	56
Statistics	Bachelor's	7	3	7	15	16	10	8	17	7	10
	Master's	8	12	7	13	12	11	14	10	9	11
Studio Art	Bachelor's	40	40	30	49	52	47	66	63	55	54
	Master's	13	9	7	13	6	14	16	6	10	16
Theatre	Bachelor's	19	14	19	24	20	22	19	19	17	23
	Master's	8	6	3	3	3	4	10	5	9	2
Veterinary Medicine	DVM	66	64	58	58	62	65	65	62	65	64
Wildlife & Fisheries Science	Bachelor's	46	30	37	26	32	24	11	25	18	17
	Master's	7	6	6	7	7	10	10	7	6	7
Zoology	Bachelor's	31	26	11	0	0	0	0	0	0	0
	Master's	2	6	7	0	0	0	0	0	0	0
	PhD	3	1	8	0	0	0	0	0	0	0

continued

**Degrees Awarded by Major  
FY 1996-2007**

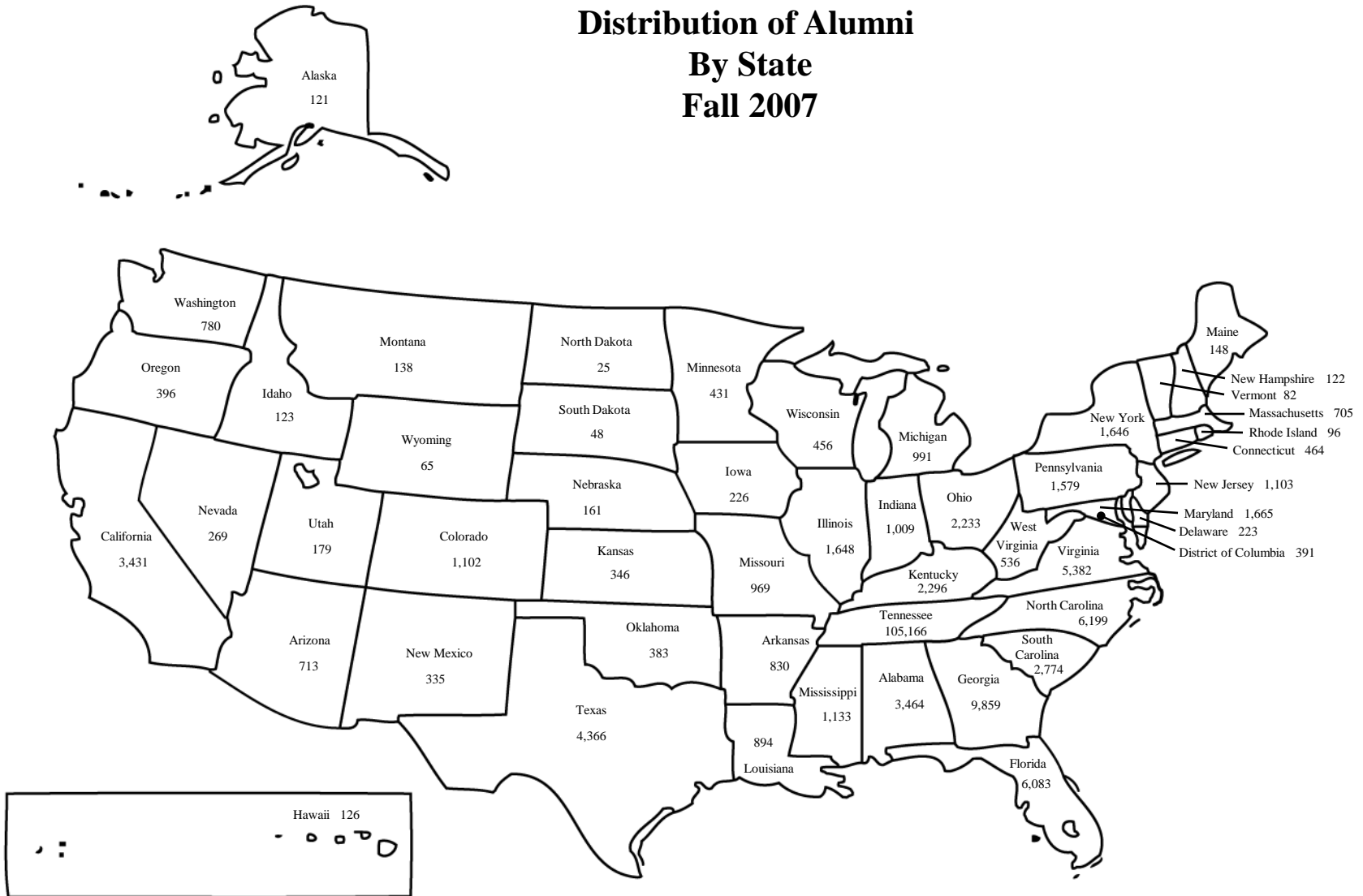
Major	Degree Awarded	1996-97	1997-98	1998-99	2000-01	2001-02	2002-03	2003-04	2004-05	2005-06	2006-07
<b>TOTALS</b>											
	Bachelor's	3,455	3,340	3,443	3,722	3,888	3,965	3,965	3,762	3,680	3,579
	Master's	1,666	1,712	1,655	1,687	1,650	1,639	1,693	1,565	1,579	1,557
	PhD	295	254	255	239	240	216	248	228	236	260
	Professional	200	213	213	202	216	226	216	198	212	216
	All Degrees	5,616	5,519	5,566	5,850	5,994	6,046	6,122	5,753	5,707	5,612

# Distribution of Alumni By County Fall 2007



Source: Student Information System

# Distribution of Alumni By State Fall 2007



Source: Student Information System  
 Note: UTK (excludes UTSI and Veterinary Medicine)