

PREFACE

University of Tennessee, Knoxville

Fact Book

Welcome to the **2006-2007** edition of the **Fact Book** for the University of Tennessee, Knoxville.

The 2006-2007 Fact Book data has been revised to provide information about the University of Tennessee, Knoxville. Past years' presentations of the Fact Book reflect inclusive figures for the programs in Knoxville, Memphis, and Tullahoma, as well as the Institute for Public Service and the Institute of Agriculture. The Common Data Set (<http://oira.utk.edu/stats.html>) continues to reflect the inclusive University of Tennessee. If you need information not found in the Fact Book, please contact the Office of Institutional Research and Assessment at (865) 974-4373, oira@tennessee.edu, or 211 Conference Center, 600 Henley Street, Knoxville, TN 37996-4122.

The UTK e-Fact Book is presented in Adobe PDF format. It is best navigated using the “Contents” within the Bookmark pane as found in [Adobe Reader 8.0](#) or higher. [Mozilla FireFox 2.0.0.3](#) is the recommended browser for the best functionality and correct page display. For further information please see [Help Document](#).

[Donald Cunningham](#), Interim Director
[Lynn Zorn](#), Fact Book Editor
[Mozhgan Shahidi](#), CD Production, Webmaster
Office of Institutional Research and Assessment

E01-0160-001-07

CONTENTS

Introduction

Contents	i-ii
Preface	iii

Student Data

Headcount Enrollment by Full-Time/Part-Time, Level, Gender, and Race, Fall 2006.....	1
Full-Time Equivalent Enrollment by Full-Time/Part-Time, Level, Gender, and Race, Fall 2006.....	2
Headcount Enrollment by Level, College, Race, and Gender, Fall 2006.....	3
Headcount Enrollment by Age, Level, and Gender, Fall 2006	4
Distribution of Student Credit Hour Loads, Fall 2006	5
Student Credit Hours by Level, College, and Term, FY 2001-2006.....	6
Top 10 Enrollment Feeders by Tennessee County, State, and Country, Fall 2006	7
Enrollment by County, Fall 2006	8
Enrollment by State, Fall 2006.....	9
International Enrollment by Country, Fall 2006.....	10
Headcount Enrollment by Race and Gender, Fall 1988-2006.....	11
Total Headcount Enrollment by Level, Full-Time and Part-Time, Fall 2002-2006.....	12
First-Time Freshmen Headcount Enrollment by College, Race, and Gender, Fall 2006.....	13
Applied, Admitted, and Enrolled Freshmen, Fall 1986-2006	14
Average Test Score, High School GPA, and Class Ranking for First-Time Freshmen, Fall 1991-2006.....	15
Average Equivalent ACT Scores, High School GPA, and Class Ranking for First-Time Freshmen, Fall 1986-2006.....	16
Undergraduate Transfer Headcount Enrollment by College, Race, and Gender, Fall 2006.....	17
Undergraduate Transfer Headcount Enrollment, Top Ten Feeder Institutions, Fall 2006	18
Applied, Admitted, and Enrolled Undergraduate Transfer Students, Fall 1986-2006	19
Undergraduate Headcount Enrollment by Race and Gender, Fall 1988-2006	20
First-Time Graduate and Professional Headcount Enrollment by College, Race, and Gender, Fall 2006.....	21
Graduate Headcount Enrollment by Race and Gender, Fall 1988-2006	22

Faculty/Staff Data

Full-Time Instructional Faculty by College, Appointment Type, Tenure Status, and Rank, Fall 2006.....	23
Tenured and Non-Tenured Full-Time Instructional Faculty, Fall 1996-2006, (as Percentages).....	24 (a)
Tenured and Non-Tenured Full-Time Instructional Faculty, Fall 2002-2006, (as Percentages) - Knoxville.....	24 (b)
Full-Time Instructional Faculty by College, Gender, Highest Degree Held, and Race, Fall 2006	25
Age and Length of Service of Full-Time Instructional Faculty, Fall 1997-2006, (as Percentages)	26
Distribution of Employees by EEO Category, Fall 2006 - Demographics.....	27 (a)
Distribution of Employees by EEO Category, Fall 2006 - Budget Entity FTE FT PT	27 (b)
Chairs of Excellence as of October 2006	28

Financial Data

Unrestricted Expenditures and Transfers by Budgetary Function with Percent Distribution of Expenditures, FY 2003-2007.....	29
Unrestricted Current Revenue by Budgetary Function and Revenue Dollars per Full-Time Equivalent Student, FY 2003-2007 ...	30
The Campaign for Tennessee	31(a – c)
Average Salaries of Full-Time Instructional Faculty by College and Rank, FY 2006-2007	32
Median Graduate Assistant Stipends, FY 1987-2007.....	33
Student Tuition by Level, Academic Years 2003-2007	34
Need-Based Financial Aid, Academic Year 2006-2007.....	35

Facilities Data

Number and Percent of Occupancy for Student Residence Halls, and Married/Graduate Student Housing, Fall 2006	36
Main Library Holdings and Expenditures, FY 2002-2006.....	37
Law Library Holdings and Expenditures, FY 2002-2006	38
UT Knoxville Campus Libraries and Centers	39
Space Institute Library Holdings and Expenditures, FY 2002-2006.....	40
University of Tennessee, Knoxville Facilities and Acreage, Fall 2006.....	41

Outcomes Data

One Year Retention Rates, First-Time Full-Time Freshmen, Fall Terms 1983-2005.....	42
Four Year Graduation Rates, First-Time Full-Time Freshmen, Fall Terms 1983-2002	43
Five Year Graduation Rates, First-Time Full-Time Freshmen, Fall Terms 1983-2001.....	44
Six Year Graduation Rates, First-Time Full-Time Freshmen, Fall Terms 1983-2000.....	45
Graduation Rates, First-Time Full-Time Freshmen, Fall Terms 1983-2002.....	46
Summary of Degrees Conferred by Discipline, FY 2002-2006	47
Summary of Degrees Conferred by Level, FY 1984-2006.....	48
Distribution of Alumni by County, Fall 2006	49
Distribution of Alumni by State, Fall 2006	50
Degrees Awarded by Major, FY 1996-2006	51-60

Research and Public Service Data (As of March 6, 2007 FY 2006 not available)

Research Award Totals by Unit and College, FY 2005	61(a –b)
Research Awards by Unit, FY 2005	62
Research Awards by Unit, FY 2001-2005.....	63

Headcount Enrollment
By Full-Time/Part-Time, Level, Gender, and Race
Fall 2006

	Total	GENDER		RACE (IPEDS Categories)						
		Men	Women	Am. Indian	Asian	Black	Hispanic	White	Not Reported	Non-Resident
TOTAL ENROLLMENT	26,476	12,849	13,627	100	673	2,137	412	21,845	260	1,049
Full-Time	22,937	11,187	11,750	85	598	1,934	358	18,986	192	784
Part-Time	3,539	1,662	1,877	15	75	203	54	2,859	68	265
TOTAL UNDERGRADUATE	20,435	10,151	10,284	81	575	1,753	349	17,313	122	242
Full-Time	18,991	9,464	9,527	72	537	1,666	312	16,079	108	217
Part-Time	1,444	687	757	9	38	87	37	1,234	14	25
First-Time Freshmen	4,244	2,058	2,186	16	117	416	89	3,568	18	20
Full-Time	4,219	2,050	2,169	16	116	414	87	3,549	17	20
Part-Time	25	8	17	0	1	2	2	19	1	0
Other Freshmen	1,705	934	771	8	47	194	30	1,402	8	16
Full-Time	1,626	897	729	8	46	190	27	1,332	7	16
Part-Time	79	37	42	0	1	4	3	70	1	0
Sophomore	4,613	2,260	2,353	15	128	435	71	3,899	23	42
Full-Time	4,423	2,163	2,260	13	125	421	66	3,735	22	41
Part-Time	190	97	93	2	3	14	5	164	1	1
Junior	4,255	2,103	2,152	15	116	336	62	3,658	25	43
Full-Time	4,046	2,004	2,042	12	115	321	57	3,478	23	40
Part-Time	209	99	110	3	1	15	5	180	2	3
Senior	5,297	2,668	2,629	27	156	359	86	4,551	46	72
Full-Time	4,579	2,312	2,267	23	134	315	71	3,939	39	58
Part-Time	718	356	362	4	22	44	15	612	7	14
Other Undergraduate	321	128	193	0	11	13	11	235	2	49
Full-Time	98	38	60	0	1	5	4	46	0	42
Part-Time	223	90	133	0	10	8	7	189	2	7
TOTAL GRADUATE/PROFESSIONAL	6,041	2,698	3,343	19	98	384	63	4,532	138	807
Full-Time	3,946	1,723	2,223	13	61	268	46	2,907	84	567
Part-Time	2,095	975	1,120	6	37	116	17	1,625	54	240
Knoxville	5,587	2,488	3,099	19	93	373	57	4,144	112	789
Full-Time	3,623	1,626	1,997	13	58	264	41	2,630	62	555
Part-Time	1,964	862	1,102	6	35	109	16	1,514	50	234
Space Institute	178	151	27	0	2	7	2	141	8	18
Full-Time	49	38	11	0	0	0	1	32	4	12
Part-Time	129	113	16	0	2	7	1	109	4	6
Veterinary Medicine	276	59	217	0	3	4	4	247	18	0
Full-Time	274	59	215	0	3	4	4	245	18	0
Part-Time	2	0	2	0	0	0	0	2	0	0

Source: Student Information System

**Full-Time Equivalent Enrollment
By Full-Time/Part-Time, Level, Gender, and Race
Fall 2006**

	Total	GENDER		RACE (IPEDS Categories)						
		Men	Women	Am. Indian	Asian	Black	Hispanic	White	Not Reported	Non-Resident
TOTAL ENROLLMENT	24,016.1	11,597.3	12,418.8	91.5	628.5	2,006.0	372.3	19,846.8	224.8	846.2
Full-Time	22,542.3	10,905.9	11,636.4	84.6	597.7	1,916.6	349.1	18,662.3	199.6	732.3
Part-Time	1,473.8	691.3	782.4	6.9	30.8	89.4	23.1	1,184.5	25.2	113.8
TOTAL UNDERGRADUATE	19,146.7	9,496.6	9,650.1	74.9	552.3	1,677.3	318.2	16,190.8	108.5	224.7
Full-Time	18,489.7	9,177.3	9,312.5	70.6	535.7	1,633.5	302.1	15,630.9	102.8	214.1
Part-Time	657.0	319.3	337.7	4.3	16.6	43.7	16.1	559.9	5.7	10.7
First-Time Freshmen	4,093.9	1,986.1	2,107.8	15.3	115.5	403.5	84.0	3,438.2	17.2	20.2
Full-Time	4,079.3	1,980.8	2,098.5	15.3	114.8	402.1	82.9	3,427.3	16.7	20.2
Part-Time	14.6	5.3	9.3	0.0	0.7	1.4	1.1	10.9	0.5	0.0
Other Freshmen	1,591.3	871.8	719.5	7.7	44.3	185.8	26.2	1,304.7	7.1	15.6
Full-Time	1,552.1	852.3	699.8	7.7	43.6	183.1	25.3	1,270.3	6.5	15.6
Part-Time	39.2	19.5	19.7	0.0	0.7	2.7	0.9	34.4	0.6	0.0
Sophomore	4,434.0	2,155.2	2,278.8	14.3	128.3	421.9	66.9	3,739.1	21.1	42.4
Full-Time	4,337.0	2,104.7	2,232.3	13.3	127.1	414.8	63.9	3,655.0	20.7	42.2
Part-Time	97.0	50.5	46.5	0.9	1.2	7.1	3.1	84.1	0.4	0.2
Junior	4,082.1	2,013.9	2,068.2	13.2	117.5	326.3	59.5	3,500.9	23.2	41.7
Full-Time	3,976.9	1,961.9	2,015.0	11.7	116.7	319.1	56.9	3,410.2	21.9	40.3
Part-Time	105.2	52.0	53.2	1.5	0.7	7.1	2.5	90.7	1.3	1.4
Senior	4,782.5	2,406.9	2,375.7	24.5	142.9	332.3	75.3	4,103.9	39.6	64.0
Full-Time	4,452.2	2,242.5	2,209.7	22.6	132.4	309.7	69.4	3,823.5	37.0	57.7
Part-Time	330.3	164.4	165.9	1.9	10.5	22.6	5.9	280.5	2.6	6.3
Other Undergraduate	162.9	62.7	100.2	0.0	3.8	7.5	6.3	104.0	0.4	40.9
Full-Time	92.2	35.1	57.1	0.0	1.0	4.7	3.7	44.7	0.0	38.1
Part-Time	70.7	27.6	43.1	0.0	2.8	2.9	2.5	59.3	0.4	2.7
TOTAL GRADUATE/PROFESSIONAL	4,869.3	2,100.7	2,768.7	16.6	76.3	328.8	54.1	3,656.0	116.3	621.4
Full-Time	4,052.6	1,728.7	2,323.9	14.0	62.1	283.1	47.0	3,031.3	96.8	518.3
Part-Time	816.8	372.0	444.8	2.6	14.2	45.7	7.1	624.7	19.4	103.2
Knoxville	4,360.1	1,940.2	2,419.9	16.6	71.3	321.0	46.8	3,212.2	83.8	608.5
Full-Time	3,585.9	1,603.7	1,982.3	14.0	57.6	277.1	40.0	2,624.3	65.6	507.3
Part-Time	774.2	336.5	437.7	2.6	13.7	43.9	6.8	587.8	18.2	101.2
Space Institute	83.7	68.7	15.0	0.0	0.5	1.8	1.1	62.9	4.5	12.9
Full-Time	42.4	33.2	9.3	0.0	0.0	0.0	0.8	27.4	3.3	10.9
Part-Time	41.3	35.5	5.8	0.0	0.5	1.8	0.3	35.5	1.3	2.0
Veterinary Medicine	425.6	91.8	333.8	0.0	4.5	6.0	6.2	380.9	28.0	0.0
Full-Time	424.3	91.8	332.4	0.0	4.5	6.0	6.2	379.6	28.0	0.0
Part-Time	1.3	0.0	1.3	0.0	0.0	0.0	0.0	1.3	0.0	0.0

Source: Student Information System

**Headcount Enrollment
By Level, College, Race, and Gender
Fall 2006**

	TOTAL			AMERICAN INDIAN			ASIAN			BLACK			HISPANIC			WHITE			NOT REPORTED		
	TOTAL	MEN	WOMEN	TOTAL	MEN	WOMEN	TOTAL	MEN	WOMEN	TOTAL	MEN	WOMEN	TOTAL	MEN	WOMEN	TOTAL	MEN	WOMEN	TOTAL	MEN	WOMEN
UNIVERSITY TOTAL	26,476	12,849	13,627	100	50	50	1,333	742	591	2,174	848	1,326	462	219	243	22,110	10,852	11,258	297	138	159
Knoxville	26,022	12,639	13,383	100	50	50	1,319	731	588	2,163	841	1,322	455	216	239	21,715	10,670	11,045	270	131	139
UNDERGRADUATE TOTAL	20,435	10,151	10,284	81	42	39	679	349	330	1,771	728	1,043	365	178	187	17,414	8,791	8,623	125	63	62
Agricultural Sciences & Natural Resources	842	445	397	4	2	2	5	1	4	30	7	23	13	3	10	783	428	355	7	4	3
Architecture & Design	438	216	222	2	0	2	9	6	3	23	15	8	11	1	10	391	192	199	2	2	0
Arts & Sciences	7,508	3,373	4,135	34	18	16	295	143	152	741	257	484	120	59	61	6,273	2,879	3,394	45	17	28
Business Administration	2,935	1,791	1,144	9	8	1	102	49	53	180	88	92	54	30	24	2,573	1,605	968	17	11	6
Communication & Information	1,463	532	931	5	2	3	30	13	17	158	53	105	23	7	16	1,237	452	785	10	5	5
Education, Health & Human Sciences	1,399	463	936	7	1	6	24	10	14	129	53	76	28	11	17	1,197	383	814	14	5	9
Engineering	1,790	1,505	285	3	2	1	94	71	23	159	105	54	38	31	7	1,485	1,286	199	11	10	1
Nursing	754	75	679	3	0	3	21	3	18	72	3	69	12	1	11	641	66	575	5	2	3
Social Work	106	14	92	1	1	0	1	0	1	18	2	16	2	0	2	83	11	72	1	0	1
University	3,200	1,737	1,463	13	8	5	98	53	45	261	145	116	64	35	29	2,751	1,489	1,262	13	7	6
GRADUATE/PROFESSIONAL TOTAL	6,041	2,698	3,343	19	8	11	654	393	261	403	120	283	97	41	56	4,696	2,061	2,635	172	75	97
Knoxville	5,587	2,488	3,099	19	8	11	640	382	258	392	113	279	90	38	52	4,301	1,879	2,422	145	68	77
Agricultural Sciences & Natural Resources	225	128	97	1	0	1	32	20	12	7	2	5	4	2	2	172	99	73	9	5	4
Architecture & Design	28	16	12	0	0	0	1	0	1	1	0	1	0	0	0	25	15	10	1	1	0
Arts & Sciences	1,410	729	681	4	1	3	176	109	67	49	18	31	35	14	21	1,111	568	543	35	19	16
Business Administration	534	331	203	4	3	1	74	38	36	34	18	16	12	5	7	397	259	138	13	8	5
Communication & Information	310	89	221	2	0	2	15	3	12	18	7	11	2	0	2	267	77	190	6	2	4
Education, Health & Human Sciences	1,038	292	746	3	1	2	60	20	40	59	18	41	10	2	8	885	247	638	21	4	17
Engineering	609	476	133	2	1	1	242	181	61	25	17	8	12	10	2	312	256	56	16	11	5
Intercollegiate Programs	25	9	16	0	0	0	6	3	3	1	0	1	0	0	0	17	6	11	1	0	1
Law	449	228	221	3	2	1	4	2	2	56	18	38	4	3	1	363	194	169	19	9	10
Nursing	177	26	151	0	0	0	5	1	4	1	0	1	1	0	1	167	25	142	3	0	3
Social Work	447	56	391	0	0	0	6	1	5	119	10	109	7	1	6	305	39	266	10	5	5
University	335	108	227	0	0	0	19	4	15	22	5	17	3	1	2	280	94	186	11	4	7
Space Institute	178	151	27	0	0	0	11	10	1	7	6	1	3	3	0	148	126	22	9	6	3
Veterinary Medicine	276	59	217	0	0	0	3	1	2	4	1	3	4	0	4	247	56	191	18	1	17

Source: Student Information System

Headcount Enrollment By Age, Level, and Gender Fall 2006

	TOTAL				UNDERGRADUATE				GRADUATE/PROFESSIONAL			
	TOTAL	MEN	WOMEN	PERCENT	TOTAL	MEN	WOMEN	PERCENT	TOTAL	MEN	WOMEN	PERCENT
TOTAL	26,476	12,849	13,627	100.0	20,435	10,151	10,284	100.0	6,041	2,698	3,343	100.0
< 18	25	8	17	0.1	25	8	17	0.1	0	0	0	0.0
18	2,714	1,196	1,518	10.3	2,714	1,196	1,518	13.3	0	0	0	0.0
19	4,052	1,921	2,131	15.3	4,052	1,921	2,131	19.8	0	0	0	0.0
20	3,881	1,835	2,046	14.7	3,880	1,834	2,046	19.0	1	1	0	0.0
21	3,547	1,762	1,785	13.4	3,514	1,749	1,765	17.2	33	13	20	0.5
22	2,741	1,397	1,344	10.4	2,369	1,289	1,080	11.6	372	108	264	6.2
23	1,915	989	926	7.2	1,248	745	503	6.1	667	244	423	11.0
24	1,226	611	615	4.6	566	330	236	2.8	660	281	379	10.9
25	832	426	406	3.1	341	198	143	1.7	491	228	263	8.1
26	758	387	371	2.9	281	169	112	1.4	477	218	259	7.9
27	639	307	332	2.4	205	108	97	1.0	434	199	235	7.2
28	486	243	243	1.8	125	71	54	0.6	361	172	189	6.0
29	412	235	177	1.6	131	89	42	0.6	281	146	135	4.7
30	340	179	161	1.3	110	56	54	0.5	230	123	107	3.8
31	302	147	155	1.1	96	57	39	0.5	206	90	116	3.4
32	266	145	121	1.0	74	37	37	0.4	192	108	84	3.2
33	193	111	82	0.7	69	41	28	0.3	124	70	54	2.1
34	197	94	103	0.7	59	25	34	0.3	138	69	69	2.3
35	205	87	118	0.8	63	20	43	0.3	142	67	75	2.4
36	180	94	86	0.7	70	35	35	0.3	110	59	51	1.8
37	152	80	72	0.6	46	28	18	0.2	106	52	54	1.8
38	111	54	57	0.4	44	21	23	0.2	67	33	34	1.1
39	94	56	38	0.4	22	10	12	0.1	72	46	26	1.2
40	107	41	66	0.4	26	6	20	0.1	81	35	46	1.3
41 - 45	413	166	247	1.6	124	38	86	0.6	289	128	161	4.8
46 - 50	310	116	194	1.2	83	30	53	0.4	227	86	141	3.8
51 - 64	355	147	208	1.3	87	33	54	0.4	268	114	154	4.4
65 AND OVER	18	12	6	0.1	10	6	4	0.0	8	6	2	0.1
Missing	5	3	2	0.0	1	1	0	0.0	4	2	2	0.1

Source: Student Information System

**Distribution of Student Credit Hour Loads
Fall 2006**

CREDIT HOURS	TOTAL	UNDERGRADUATE						GRADUATE		PROFESSIONAL	
		FRESHMAN	SOPHOMORE	JUNIOR	SENIOR	5TH YEAR	OTHER	Space Institute	Knoxville	Veterinary Medicine	Law
1	67	0	3	0	7	0	5	0	52	0	0
2	33	0	1	0	9	1	13	0	9	0	0
3	1,117	17	12	21	106	6	90	89	775	0	1
4	126	4	7	7	22	0	24	6	56	0	0
5	44	0	2	3	17	0	6	0	16	0	0
6	1,203	16	44	51	165	7	40	34	845	0	1
7	267	5	20	16	44	7	15	0	160	0	0
8	129	4	9	11	42	6	6	0	49	2	0
9	1,405	22	37	53	159	21	9	5	1,098	0	1
10	599	17	38	28	54	9	6	35	410	0	2
11	247	19	17	19	33	3	9	0	140	0	7
12	3,513	472	557	649	1,093	54	31	3	633	0	21
13	3,339	1,273	812	498	462	45	13	6	202	0	28
14	3,086	1,430	530	577	383	25	7	0	83	0	51
15	4,989	1,085	935	1,003	1,138	53	25	0	511	0	239
16	3,431	1,121	997	677	476	48	14	0	15	17	66
17	1,240	354	335	277	231	15	1	0	4	0	23
18	1,080	84	171	252	370	15	5	0	11	165	7
19	373	24	80	92	101	12	2	0	60	0	2
20	130	1	2	8	22	0	0	0	8	89	0
21	40	1	3	7	26	2	0	0	0	1	0
22	9	0	1	2	5	0	0	0	1	0	0
23	7	0	0	3	1	1	0	0	0	2	0
24	2	0	0	1	1	0	0	0	0	0	0
TOTAL	26,476	5,949	4,613	4,255	4,967	330	321	178	5,138	276	449
<i>AVG. CREDIT HOURS</i>	13.1	14.3	14.4	14.4	13.6	13.4	7.6	5.6	8.9	18.5	14.8

Source: Student Information System

**Student Credit Hours
By Level, College, and Term
FY 2001-2006**

	SUMMER TERM					FALL TERM					SPRING TERM				
	2001	2002	2003	2004	2005	2001	2002	2003	2004	2005	2002	2003	2004	2005	2006
UNIVERSITY TOTAL	61,220	61,000	59,702	54,393	52,441	328,972	328,855	321,860	328,401	327,770	307,023	302,494	329,614	303,542	304,266
Knoxville	60,410	60,078	58,774	53,383	51,511	323,643	323,415	316,653	324,433	322,567	302,141	297,329	324,398	298,822	298,870
UNDERGRADUATE TOTAL	42,687	43,161	42,497	38,128	34,804	278,412	276,492	269,548	274,853	271,162	256,906	253,133	279,582	252,900	251,000
Agricultural Sciences & Natural Resources	56	425	371	67	71	8,759	8,553	7,208	6,195	5,767	8,427	8,425	6,456	5,949	5,495
Architecture & Design	555	410	382	446	400	4,727	5,233	4,837	4,786	4,636	4,392	4,651	4,299	4,597	4,696
Arts & Sciences	24,196	23,933	24,451	23,355	20,776	173,696	172,406	171,224	178,620	177,598	155,484	152,444	185,338	161,264	158,942
Business Administration	7,559	8,478	6,950	6,352	5,694	33,146	33,905	33,336	32,944	32,355	32,593	32,667	31,240	30,196	31,434
Communication & Information	2,398	2,392	2,006	1,546	1,661	11,998	12,927	12,569	12,815	13,776	11,507	11,882	12,348	12,447	13,248
Education, Health & Human Sciences	5,869	5,706	6,464	4,613	4,172	24,337	23,236	20,434	19,666	18,818	26,822	25,587	22,735	21,804	20,855
Engineering	1,588	1,257	1,365	1,195	1,207	12,492	12,820	12,652	12,967	11,456	11,449	11,509	11,392	11,200	11,062
Intercollegiate Programs	0	0	0	28	307	4,183	2,082	2,066	1,845	1,803	1,102	832	733	552	443
Nursing	403	481	424	448	456	3,492	3,625	3,865	3,801	3,755	3,625	3,684	3,759	3,765	3,680
Social Work	60	48	84	78	60	771	843	630	546	620	693	632	629	573	660
University	3	31	0	0	0	811	862	727	668	578	812	820	653	553	485
GRADUATE/PROFESSIONAL TOTAL	18,533	17,839	17,205	16,265	17,637	50,560	52,363	52,312	53,548	56,608	50,117	49,361	50,032	50,642	53,266
Knoxville	17,723	16,917	16,277	15,255	16,707	45,231	46,923	47,105	49,580	51,405	45,235	44,196	44,816	45,922	47,870
Agricultural Sciences & Natural Resources	357	297	323	414	403	1,017	1,213	1,137	1,262	1,392	1,113	1,270	1,338	1,170	1,242
Architecture & Design	24	12	9	20	6	334	233	333	362	337	390	289	318	339	380
Arts & Sciences	3,981	3,374	3,916	3,515	3,667	11,243	11,093	11,480	12,613	12,443	10,957	10,898	11,333	11,810	11,681
Business Administration	1,517	1,541	1,492	1,683	1,712	6,552	7,233	7,427	7,334	7,628	6,193	4,919	5,449	5,112	5,730
Communication & Information	689	701	734	620	678	1,379	1,493	1,524	1,675	1,955	1,374	1,437	1,563	1,751	1,912
Education, Health & Human Sciences	8,205	7,876	6,567	5,894	6,124	10,159	10,203	9,237	9,459	8,706	11,020	10,668	9,719	9,677	8,863
Engineering	1,370	1,440	1,447	1,297	1,733	3,346	4,168	4,686	4,682	5,238	3,585	4,156	4,451	4,538	5,222
Law	379	223	198	301	243	6,972	6,965	6,858	6,767	6,824	6,668	6,722	6,570	6,507	6,379
Nursing	401	647	714	763	813	1,270	1,237	1,360	1,414	1,470	1,070	1,063	1,191	1,212	1,358
Social Work	785	800	856	736	1,328	2,923	3,049	2,968	3,967	5,412	2,862	2,765	2,809	3,701	5,103
University	15	6	21	12	0	36	36	95	45	0	3	9	75	105	0
Veterinary Medicine	810	922	928	1,010	930	5,329	5,440	5,207	3,968	5,203	4,882	5,165	5,216	4,720	5,396

Source: Class Roll Reporting File

**Top 10 Enrollment Feeders
By Tennessee County, State, and Country
Fall 2006**

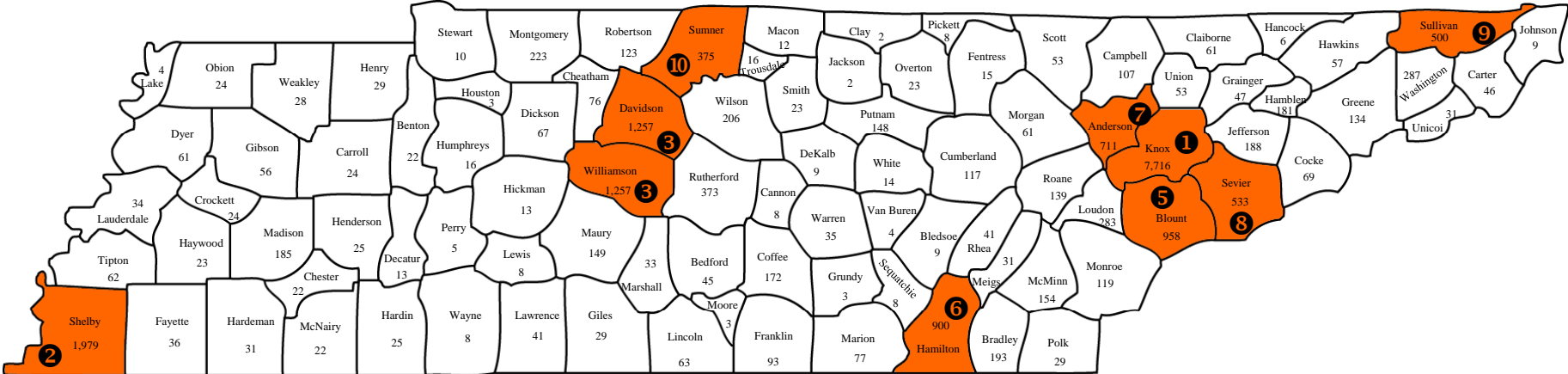
COUNTY	TOTAL	UNDERGRADUATE	GRADUATE
TENNESSEE	21,607	17,417	4,190
Knox	7,716	5,520	2,196
Shelby	1,979	1,788	191
Davidson	1,257	1,048	209
Williamson	1,257	1,176	81
Blount	958	736	222
Hamilton	900	796	104
Anderson	711	558	153
Sevier	533	447	86
Sullivan	500	450	50
Sumner	375	339	36

STATE	TOTAL	UNDERGRADUATE	GRADUATE
OUT-OF-STATE	3,806	2,765	1,041
Virginia	556	445	111
Georgia	490	402	88
North Carolina	309	224	85
Ohio	287	235	52
Florida	190	133	57
Maryland	141	99	42
South Carolina	140	99	41
Illinois	131	110	21
Pennsylvania	121	84	37
California	115	76	39

COUNTRY	TOTAL	UNDERGRADUATE	GRADUATE
INTERNATIONAL	1,063	253	810
China	260	25	235
India	160	9	151
Korea	118	32	86
Canada	41	20	21
Taiwan	41	10	31
United Kingdom	25	16	9
Thailand	20	2	18
Japan	19	8	11
Russia	17	5	12
Germany	15	6	9

Source: Student Information System

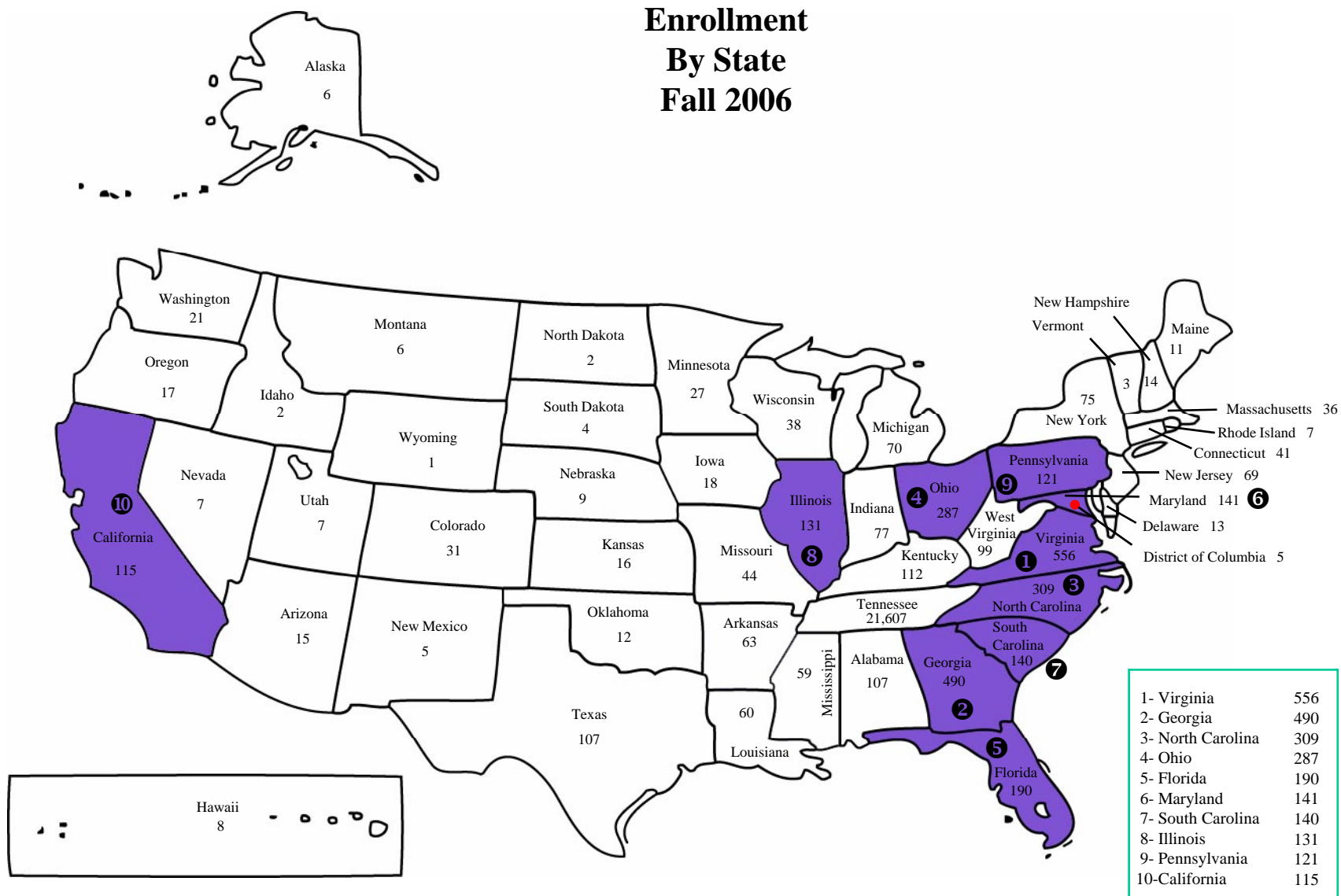
Enrollment By County Fall 2006



Source: Student Information System

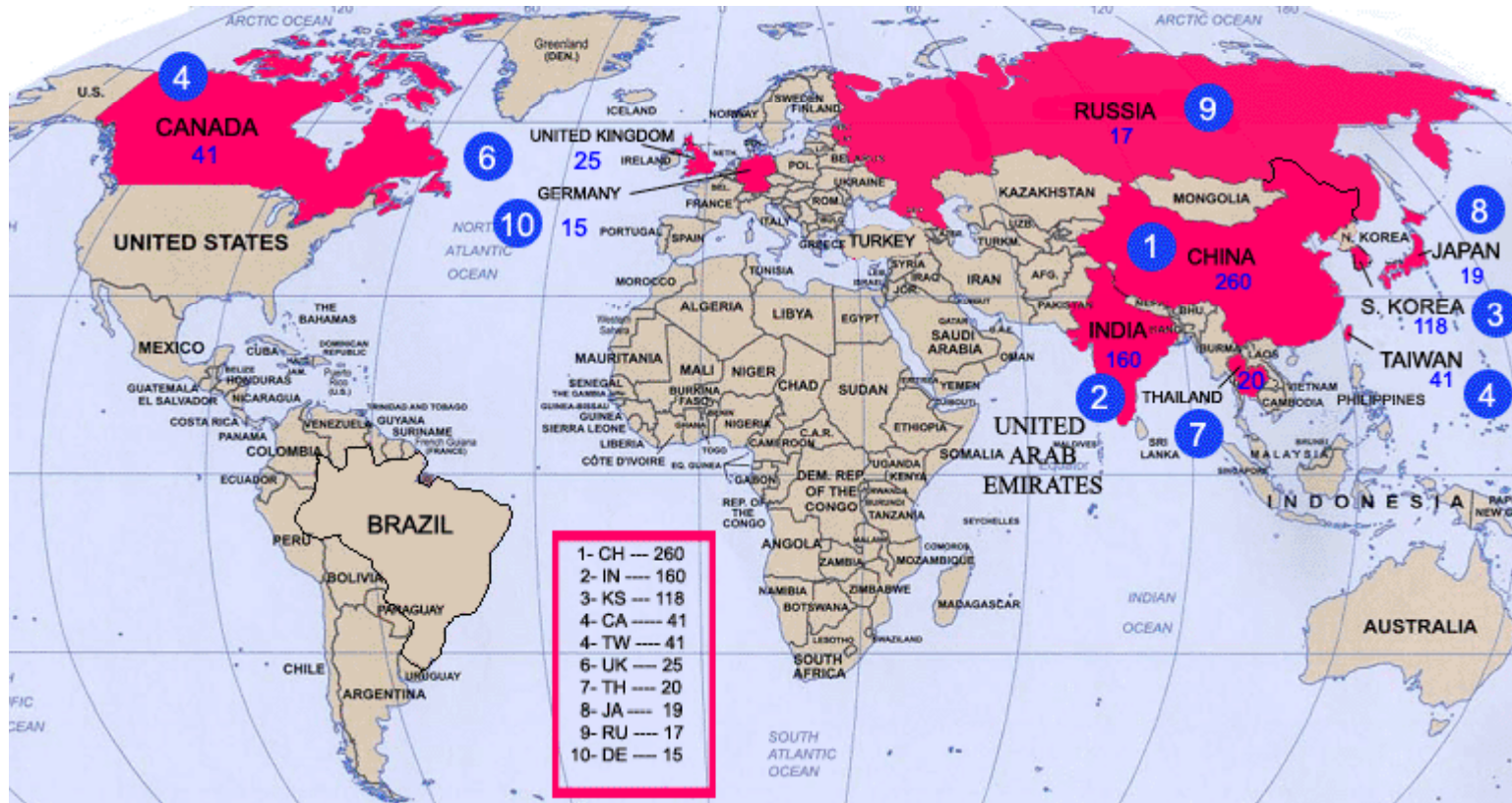
1- Knox	7,716
2- Shelby	1,979
3- Davidson	1,257
3- Williamson	1,257
5- Blount	958
6- Hamilton	900
7- Anderson	711
8- Sevier	533
9- Sullivan	500
10- Sumner	375

Enrollment By State Fall 2006



Source: Student Information System

International Enrollment By Country Fall 2006



Source: Student Information System

**Headcount Enrollment
By Race and Gender
Fall 1988-2006**

YEAR	TOTAL			AMERICAN INDIAN			ASIAN			BLACK			HISPANIC			WHITE			NOT REPORTED		
	Total	Men	Women	Total	Men	Women	Total	Men	Women	Total	Men	Women	Total	Men	Women	Total	Men	Women	Total	Men	Women
1988	24,390	12,668	11,722	44	19	25	681	453	228	1,167	501	666	139	89	50	22,359	11,606	10,753	0	0	0
1989	25,016	12,875	12,141	41	21	20	715	467	248	1,237	556	681	168	94	74	22,855	11,737	11,118	0	0	0
1990	25,414	13,086	12,328	44	18	26	787	507	280	1,317	584	733	182	102	80	23,084	11,875	11,209	0	0	0
1991	25,598	13,061	12,537	50	23	27	920	589	331	1,349	599	750	186	99	87	23,093	11,751	11,342	0	0	0
1992	25,998	13,377	12,621	58	35	23	986	632	354	1,414	631	783	226	116	110	23,314	11,963	11,351	0	0	0
1993	25,890	13,157	12,733	79	40	39	1,030	638	392	1,361	598	763	243	118	125	23,177	11,763	11,414	0	0	0
1994	25,412	12,935	12,477	73	37	36	995	612	383	1,320	593	727	256	131	125	22,768	11,562	11,206	0	0	0
1995	25,251	12,534	12,717	86	40	46	995	594	401	1,260	554	706	259	137	122	22,651	11,209	11,442	0	0	0
1996	25,086	12,349	12,737	83	41	42	982	568	414	1,216	506	710	264	141	123	22,541	11,093	11,448	0	0	0
1997	25,039	12,289	12,750	83	47	36	1,006	564	442	1,288	547	741	285	156	129	22,377	10,975	11,402	0	0	0
1998	25,611	12,393	13,218	74	37	37	1,024	570	454	1,414	591	823	295	155	140	22,804	11,040	11,764	0	0	0
1999	25,981	12,493	13,488	84	36	48	1,046	579	467	1,518	602	916	320	164	156	23,013	11,112	11,901	0	0	0
2000	25,474	12,074	13,400	77	32	45	1,083	577	506	1,540	643	897	312	155	157	22,364	10,619	11,745	98	48	50
2001	26,033	12,243	13,790	85	30	55	1,137	630	507	1,669	668	1,001	344	165	179	22,635	10,672	11,963	163	78	85
2002	25,933	12,346	13,587	91	37	54	1,216	664	552	1,748	694	1,054	351	173	178	22,214	10,640	11,574	313	138	175
2003	25,215	12,136	13,079	85	35	50	1,207	680	527	1,750	721	1,029	333	163	170	21,501	10,381	11,120	339	156	183
2004	25,632	12,374	13,258	101	48	53	1,213	694	519	1,915	776	1,139	359	176	183	21,737	10,526	11,211	307	154	153
2005	26,197	12,611	13,586	106	49	57	1,300	715	585	2,118	843	1,275	411	185	226	21,975	10,666	11,309	287	153	134
2006	26,476	12,849	13,627	100	50	50	1,333	742	591	2,174	848	1,326	462	219	243	22,110	10,852	11,258	297	138	159

Source: Student Information System

**Total Headcount Enrollment
By Level, Full-Time and Part-Time
Fall 2002-2006**

	Total					Full-Time					Part-Time				
	2002	2003	2004	2005	2006	2002	2003	2004	2005	2006	2002	2003	2004	2005	2006
TOTAL	25,933	25,215	25,632	26,197	26,476	21,863	21,353	21,947	22,579	22,937	4,070	3,862	3,685	3,618	3,539
Knoxville	25,517	24,805	25,249	25,761	26,022	21,552	21,042	21,644	22,258	22,614	3,965	3,763	3,605	3,503	3,408
UNDERGRADUATE TOTAL	19,827	19,072	19,505	20,052	20,435	17,925	17,362	17,920	18,559	18,991	1,902	1,710	1,585	1,493	1,444
Knoxville															
First-time Freshmen	3,682	3,579	4,422	4,265	4,244	3,638	3,529	4,395	4,243	4,219	44	50	27	22	25
Other Freshmen	1,683	1,615	1,646	2,063	1,705	1,602	1,521	1,565	1,961	1,626	81	94	81	102	79
Sophomore	4,078	3,903	3,845	4,397	4,613	3,862	3,701	3,654	4,195	4,423	216	202	191	202	190
Undergraduate Special	376	318	327	354	321	119	98	92	139	98	257	220	235	215	223
Junior	4,014	3,920	3,731	3,741	4,255	3,693	3,659	3,485	3,529	4,046	321	261	246	212	209
Senior	5,678	5,413	5,240	4,961	4,967	4,750	4,571	4,480	4,259	4,309	928	842	760	702	658
5th Year Undergraduate	316	324	294	271	330	261	283	249	233	270	55	41	45	38	60
GRADUATE TOTAL	5,373	5,412	5,406	5,414	5,323	3,210	3,263	3,308	3,289	3,232	2,163	2,149	2,098	2,125	2,091
Knoxville Total	5,233	5,276	5,294	5,255	5,138	3,174	3,226	3,276	3,245	3,176	2,059	2,050	2,018	2,010	1,962
Graduate Special	369	400	418	467	380	64	97	74	94	71	305	303	344	373	309
Master Candidate	3,371	3,357	3,332	3,146	3,078	2,292	2,262	2,337	2,169	2,118	1,079	1,095	995	977	960
Education Special	56	33	40	30	41	4	5	6	10	10	52	28	34	20	31
Doctoral - Early	1,187	1,232	1,314	1,416	1,541	740	779	808	921	957	447	453	506	495	584
Doctoral - Late	248	251	187	194	97	73	83	51	51	20	175	168	136	143	77
Post Doctoral	2	3	3	2	1	1	0	0	0	0	1	3	3	2	1
Space Institute Total	140	136	112	159	178	36	37	32	44	49	104	99	80	115	129
Graduate Special	11	9	9	8	14	0	0	0	1	0	11	9	9	7	14
Master Candidate	102	108	88	128	137	21	25	22	28	31	81	83	66	100	106
Doctoral - Early	21	15	12	21	24	11	10	9	14	16	10	5	3	7	8
Doctoral - Late	5	3	2	1	3	4	2	1	1	2	1	1	1	0	1
Post Doctoral	1	1	1	1	0	0	0	0	0	0	1	1	1	1	0
Veterinary Medicine Total	0	0	0	0	7	0	0	0	0	7	0	0	0	0	0
Graduate Special	0	0	0	0	7	0	0	0	0	7	0	0	0	0	0
PROFESSIONAL TOTAL	733	731	721	731	718	728	728	719	731	714	5	3	2	0	4
Law Total	457	457	450	454	449	453	454	448	454	447	4	3	2	0	2
Professional 1st	305	289	264	162	161	305	288	262	162	161	0	1	2	0	0
Professional 2nd	38	23	54	149	148	37	23	54	149	148	1	0	0	0	0
Professional 3rd	114	145	132	143	140	111	143	132	143	138	3	2	0	0	2
Veterinary Medicine Total	276	274	271	277	269	275	274	271	277	267	1	0	0	0	2
Professional 1st	81	79	74	75	80	80	79	74	75	80	1	0	0	0	0
Professional 2nd	66	70	68	73	65	66	70	68	73	63	0	0	0	0	2
Professional 3rd	105	102	129	128	124	105	102	129	128	124	0	0	0	0	0
Professional 4th	24	23	0	1	0	24	23	0	1	0	0	0	0	0	0

Source: Student Information System

**First-Time Freshmen Headcount Enrollment
By College, Race, and Gender
Fall 2006**

COLLEGE	TOTAL			AMERICAN INDIAN			ASIAN			BLACK			HISPANIC			WHITE			NOT REPORTED		
	Total	Men	Women	Total	Men	Women	Total	Men	Women	Total	Men	Women	Total	Men	Women	Total	Men	Women	Total	Men	Women
TOTAL	4,244	2,058	2,186	16	6	10	125	66	59	419	169	250	90	50	40	3,575	1,762	1,813	19	5	14
Agricultural Sciences & Natural Resources	138	65	73	2	0	2	1	0	1	3	1	2	2	0	2	130	64	66	0	0	0
Architecture & Design	76	38	38	0	0	0	1	1	0	4	1	3	2	0	2	69	36	33	0	0	0
Arts & Sciences	1,460	587	873	9	5	4	52	25	27	184	52	132	21	12	9	1,188	492	696	6	1	5
Business Administration	635	384	251	1	1	0	19	10	9	44	23	21	21	11	10	547	339	208	3	0	3
Communication & Information	251	86	165	1	0	1	5	3	2	27	8	19	3	1	2	213	73	140	2	1	1
Education, Health & Human Sciences	206	72	134	2	0	2	2	1	1	17	6	11	8	4	4	176	61	115	1	0	1
Engineering	458	388	70	1	0	1	18	13	5	36	28	8	10	8	2	391	337	54	2	2	0
Nursing	179	10	169	0	0	0	5	1	4	24	1	23	3	0	3	143	7	136	4	1	3
Social Work	10	0	10	0	0	0	0	0	0	1	0	1	0	0	0	9	0	9	0	0	0
University	831	428	403	0	0	0	22	12	10	79	49	30	20	14	6	709	353	356	1	0	1

Source: Student Information System

Applied, Admitted, and Enrolled Freshmen Fall 1986-2006

Year	Number Applied	Number Admitted	Percentage of Applicants Admitted	Number Enrolled	Percentage of Applicants Enrolled	Percentage of Admitted Enrolled
1986	6,699	5,334	80%	3,699	55%	69%
1987	6,892	5,530	80%	3,834	56%	69%
1988	7,822	6,021	77%	3,795	49%	63%
1989	7,222	5,739	79%	3,390	47%	59%
1990	7,526	5,816	77%	3,418	45%	59%
1991	6,994	5,070	72%	3,060	44%	60%
1992	7,583	5,573	73%	3,219	42%	58%
1993	7,473	5,372	72%	3,013	40%	56%
1994	7,027	5,179	74%	2,912	41%	56%
1995	8,305	5,977	72%	3,506	42%	59%
1996	8,630	6,438	75%	3,692	43%	57%
1997	8,923	6,740	76%	3,890	44%	58%
1998	9,464	7,177	76%	3,806	40%	53%
1999	10,634	7,148	67%	4,155	39%	58%
2000	10,171	6,344	62%	3,833	38%	60%
2001	8,263	5,675	69%	3,958	48%	70%
2002	9,724	5,629	58%	3,682	38%	65%
2003	9,514	8,505	89%	3,579	38%	42%
2004	10,832	9,426	87%	4,422	41%	47%
2005	12,251	9,060	74%	4,264	35%	47%
2006	12,372	9,132	74%	4,244	34%	46%

Note: Prior to 2003, declined applicants were removed from both applied and admitted counts.

Source: Office of Enrollment Services

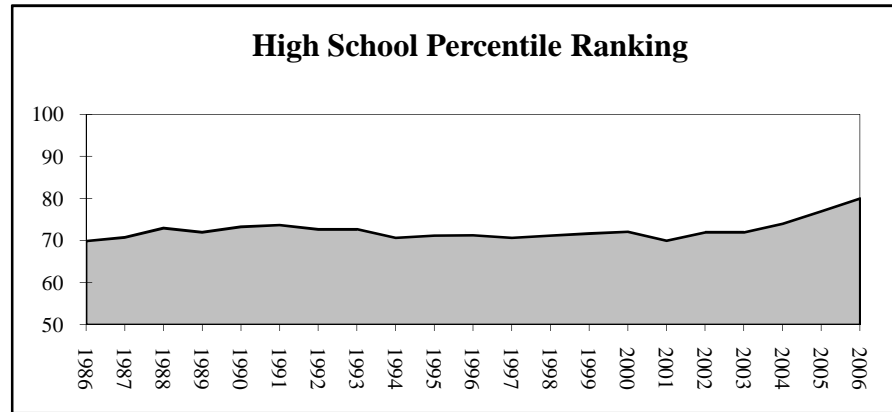
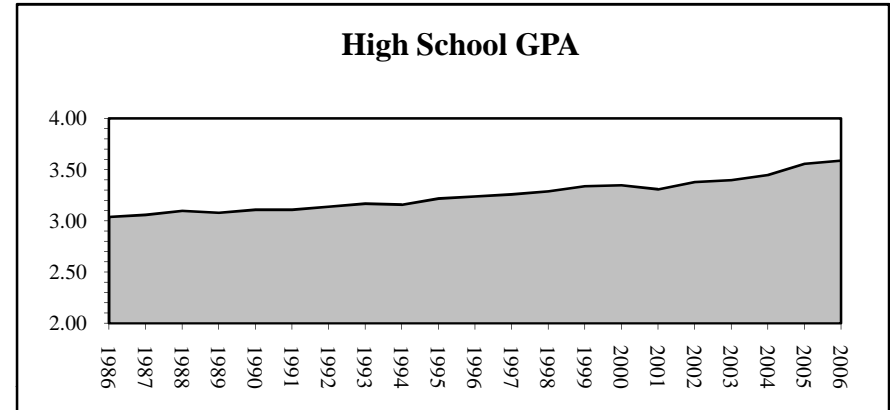
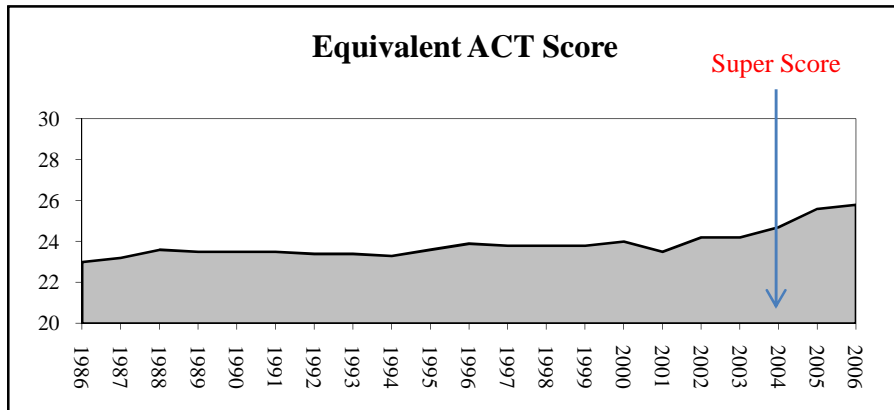
**Average Test Score, High School GPA, and Class Ranking
For First-Time Freshmen
Fall 1991-2006**

	1991	1992	1993	1994	1995	1996	1997	1998	1999	2000	2001	2002	2003	2004	2005	2006
Equivalent ACT																
Number	2,989	3,160	2,960	2,867	3,458	3,649	3,851	3,781	4,132	3,818	3,932	3,662	3,556	4,394	4,148	4,120
Average	23.5	23.4	23.4	23.3	23.6	23.9	23.8	23.8	23.8	24.0	23.5	24.2	24.2	24.7	25.6	25.8
ACT Composite																
Number	2,611	2,742	2,618	2,539	3,067	3,240	3,356	3,294	3,581	3,303	3,411	3,138	3,086	3,859	3,731	3,783
Average	23.3	23.2	23.1	23.1	23.4	23.6	23.6	23.6	23.6	23.9	23.4	24.0	24.1	24.7	25.4	25.7
SAT Total																
Number	1,370	1,439	1,287	1,181	1,478	1,665	1,771	1,734	1,829	1,741	1,714	1,699	1,634	1,947	1,763	1,555
Average	1,093	1,089	1,095	1,097	1,106	1,113	1,101	1,104	1,103	1,113	1,092	1,110	1,116	1,113	1,157	1,159
High School GPA																
Number	3,026	3,172	2,982	2,896	3,473	3,657	3,869	3,777	4,131	3,818	3,932	3,666	3,567	4,404	3,597	3,540
Average	3.11	3.14	3.17	3.16	3.22	3.24	3.26	3.29	3.34	3.35	3.31	3.38	3.40	3.45	3.56	3.59
3.50 - 4.00	783	890	911	890	1,142	1,212	1,398	1,459	1,748	1,612	1,677	1,714	1,640	2,179	2,155	2,195
3.00 - 3.49	1,001	1,001	955	929	1,143	1,050	1,284	1,255	1,377	1,335	1,214	1,113	1,123	1,457	992	1,001
2.50 - 2.99	844	919	788	739	876	716	921	853	814	699	751	633	635	637	389	301
2.00 - 2.49	388	346	314	329	299	250	255	208	189	168	266	182	157	123	59	41
< 2.00	10	16	14	9	13	0	11	2	3	4	24	24	12	8	2	2
High School Percentile Ranking																
Number	2,295	2,379	2,139	2,003	2,322	2,149	2,079	2,055	2,096	1,962	3,257	2,930	2,778	3,104	2,161	2,064
Average	74	73	73	71	71	71	71	72	72	72	70	72	72	74	77	80
76 - 99	1,257	1,267	1,151	970	1,154	1,106	1,045	1,054	1,088	1,035	1,647	1,579	1,485	1,747	1,363	1,407
51 - 75	701	707	627	639	745	653	637	613	657	594	983	845	839	917	582	480
26 - 50	294	331	305	332	364	320	338	327	291	276	480	409	383	371	185	150
1 - 25	43	74	56	62	59	70	59	61	60	57	147	97	71	69	31	27

Source: Student Information System and Student Record Master

Note: Equivalent ACT scores are based on the higher of ACT composite or SAT total converted to ACT. Beginning in 2004, a "super score" is used for the ACT and SAT with the score based on the highest score of individual components.

**Average Equivalent ACT Scores, High School GPA
And Class Ranking for First-Time Freshmen
Fall 1986-2006**



Source: Student Information System and Student Record Master

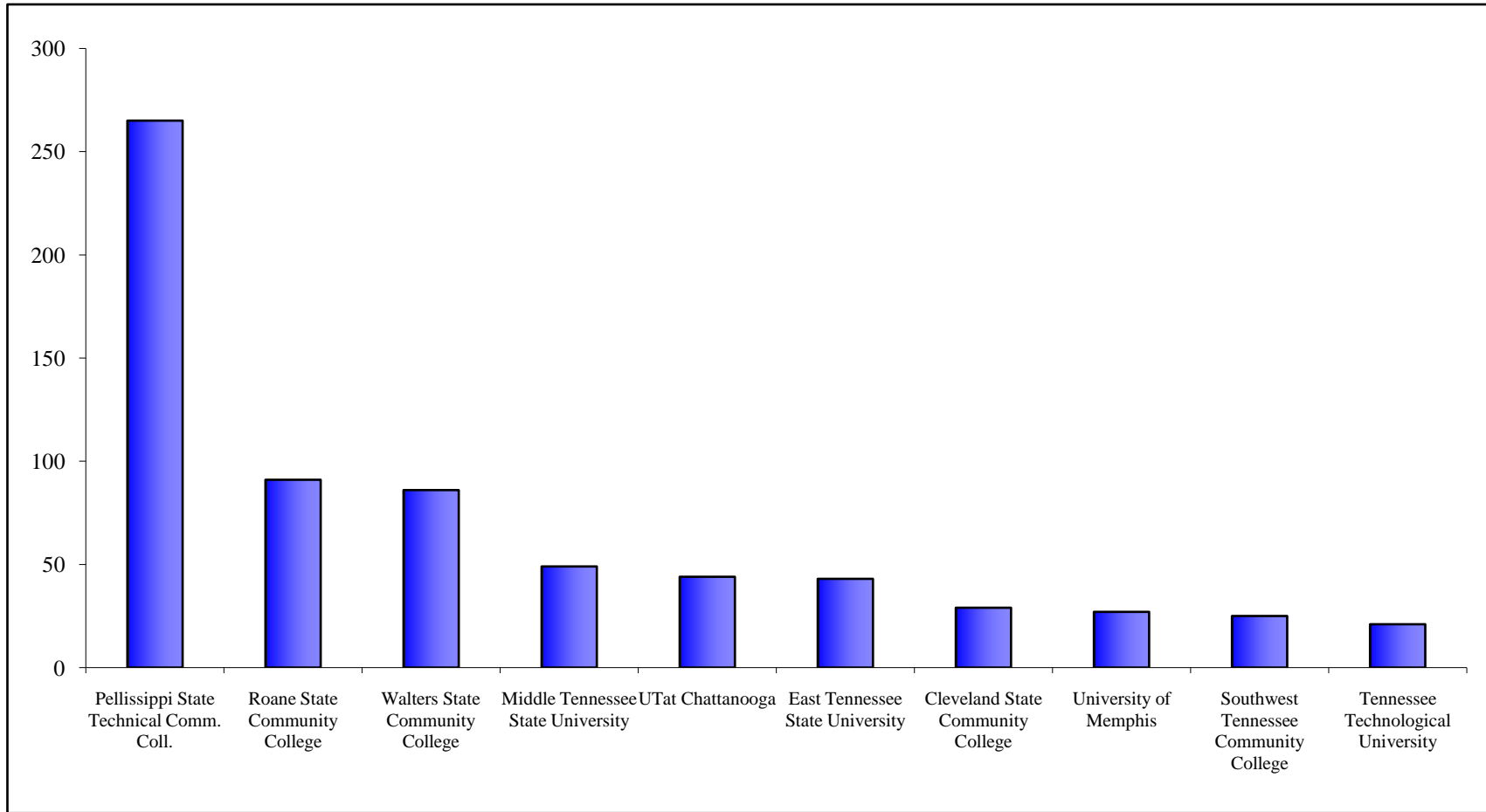
Note: Equivalent ACT scores are based on the higher of ACT composite or SAT total converted to ACT. Beginning in 2004, a "super score" is used for the ACT and SAT with the score based on the highest score of individual components.

**Undergraduate Transfer Headcount Enrollment
By College, Race, and Gender
Fall 2006**

COLLEGE	TOTAL			AMERICAN INDIAN			ASIAN			BLACK			HISPANIC			WHITE			NOT REPORTED		
	Total	Men	Women	Total	Men	Women	Total	Men	Women	Total	Men	Women	Total	Men	Women	Total	Men	Women	Total	Men	Women
TOTAL	1,257	633	624	7	4	3	32	13	19	55	21	34	31	12	19	1,113	570	543	19	13	6
Agricultural Sciences & Natural Resources	68	36	32	1	1	0	0	0	0	2	2	0	2	0	2	62	32	30	1	1	0
Architecture & Design	11	7	4	0	0	0	0	0	0	1	1	0	1	0	1	9	6	3	0	0	0
Arts & Sciences	453	201	252	1	1	0	12	4	8	19	5	14	11	5	6	405	184	221	5	2	3
Business Administration	158	93	65	0	0	0	5	3	2	5	2	3	5	1	4	143	87	56	0	0	0
Communication & Information	64	29	35	1	0	1	0	0	0	4	0	4	1	1	0	55	26	29	3	2	1
Education, Health & Human Sciences	99	40	59	1	0	1	2	2	0	3	0	3	2	0	2	89	37	52	2	1	1
Engineering	85	65	20	0	0	0	5	2	3	9	6	3	3	2	1	64	51	13	4	4	0
Nursing	59	10	49	0	0	0	3	0	3	2	0	2	2	0	2	51	9	42	1	1	0
Social Work	20	2	18	0	0	0	0	0	0	0	0	0	0	0	0	20	2	18	0	0	0
University	240	150	90	3	2	1	5	2	3	10	5	5	4	3	1	215	136	79	3	2	1

Source: Student Information System

**Undergraduate Transfer Headcount Enrollment
Top Ten Feeder Institutions
Fall 2006**



Source: Student Information System

**Applied, Admitted, and Enrolled
Undergraduate Transfer Students
Fall 1986-2006**

Year	Number Applied	Number Admitted	Percentage of Applicants Admitted	Number Enrolled	Percentage of Applicants Enrolled	Percentage of Admitted Enrolled
1986	2,119	1,603	76%	1,097	52%	68%
1987	1,882	1,350	72%	934	50%	69%
1988	2,080	1,461	70%	938	45%	64%
1989	2,235	1,615	72%	1,097	49%	68%
1990	2,576	1,837	71%	1,226	48%	67%
1991	2,662	1,868	70%	1,249	47%	67%
1992	2,725	1,938	71%	1,481	54%	76%
1993	2,898	2,084	72%	1,586	55%	76%
1994	2,956	2,141	72%	1,624	55%	76%
1995	2,830	1,987	70%	1,352	48%	68%
1996	2,784	1,991	72%	1,434	52%	72%
1997	2,554	1,829	72%	1,173	46%	64%
1998	2,489	1,730	70%	1,214	49%	70%
1999	2,647	1,826	69%	1,427	54%	78%
2000	2,479	1,754	71%	1,246	50%	71%
2001	2,208	1,727	78%	1,411	64%	82%
2002*	2,449	1,688	69%	1,372	56%	81%
2003*	2,319	1,652	71%	1,384	60%	84%
2004*	2,376	1,802	76%	1,159	49%	64%
2005*	2,796	1,996	71%	1,564	56%	78%
2006*	2,503	1,766	71%	1,364	54%	77%

Source: Office of Enrollment Services

*Data for 2002 - 2006 include Knoxville and Health Science Center

**Undergraduate Headcount Enrollment
By Race and Gender
Fall 1988-2006**

YEAR	TOTAL			AMERICAN INDIAN			ASIAN			BLACK			HISPANIC			WHITE			NOT REPORTED		
	Total	Men	Women	Total	Men	Women	Total	Men	Women	Total	Men	Women	Total	Men	Women	Total	Men	Women	Total	Men	Women
1988	18,770	9,811	8,959	25	11	14	329	193	136	863	390	473	74	47	27	17,479	9,170	8,309	0	0	0
1989	19,067	9,891	9,176	26	14	12	339	196	143	900	422	478	94	51	43	17,708	9,208	8,500	0	0	0
1990	19,532	10,052	9,480	28	11	17	371	216	155	997	455	542	106	58	48	18,030	9,312	8,718	0	0	0
1991	19,385	9,951	9,434	33	16	17	452	268	184	1,033	469	564	103	55	48	17,764	9,143	8,621	0	0	0
1992	19,342	10,095	9,247	41	25	16	510	306	204	1,043	485	558	144	79	65	17,604	9,200	8,404	0	0	0
1993	18,986	9,770	9,216	52	28	24	543	312	231	990	453	537	157	83	74	17,244	8,894	8,350	0	0	0
1994	18,608	9,611	8,997	46	24	22	524	307	217	946	442	504	177	95	82	16,915	8,743	8,172	0	0	0
1995	18,735	9,470	9,265	53	27	26	571	324	247	864	404	460	179	98	81	17,068	8,617	8,451	0	0	0
1996	18,826	9,474	9,352	52	26	26	570	304	266	864	395	469	199	107	92	17,141	8,642	8,499	0	0	0
1997	19,061	9,520	9,541	55	33	22	637	335	302	972	447	525	210	116	94	17,187	8,589	8,598	0	0	0
1998	19,692	9,716	9,976	52	29	23	627	325	302	1,087	482	605	219	117	102	17,707	8,763	8,944	0	0	0
1999	20,259	9,912	10,347	64	31	33	604	315	289	1,196	501	695	234	125	109	18,161	8,940	9,221	0	0	0
2000	20,009	9,718	10,291	60	28	32	585	293	292	1,222	541	681	237	127	110	17,822	8,686	9,136	83	43	40
2001	20,124	9,736	10,388	64	26	38	592	313	279	1,310	559	751	249	123	126	17,775	8,649	9,126	134	66	68
2002	19,827	9,699	10,128	75	32	43	627	307	320	1,374	582	792	263	131	132	17,285	8,552	8,733	203	95	108
2003	19,072	9,381	9,691	65	27	38	567	279	288	1,393	603	790	237	122	115	16,602	8,248	8,354	208	102	106
2004	19,505	9,627	9,878	79	40	39	583	314	269	1,546	671	875	272	138	134	16,837	8,371	8,466	188	93	95
2005	20,052	9,866	10,186	85	40	45	669	333	336	1,723	724	999	318	145	173	17,130	8,556	8,574	127	68	59
2006	20,435	10,151	10,284	81	42	39	679	349	330	1,771	728	1,043	365	178	187	17,414	8,791	8,623	125	63	62

Source: Student Information System

**First-Time Graduate and Professional Headcount Enrollment
By College, Race, and Gender
Fall 2006**

COLLEGE	TOTAL			AMERICAN INDIAN			ASIAN			BLACK			HISPANIC			WHITE			NOT REPORTED		
	Total	Men	Women	Total	Men	Women	Total	Men	Women	Total	Men	Women	Total	Men	Women	Total	Men	Women	Total	Men	Women
TOTAL	1,660	691	969	9	4	5	155	88	67	135	37	98	22	9	13	1,295	543	752	44	10	34
Knoxville Total	1,555	643	912	9	4	5	149	83	66	130	35	95	20	9	11	1,211	503	708	36	9	27
Agricultural Sciences & Natural Resources	48	29	19	1	0	1	7	5	2	0	0	0	1	1	0	38	23	15	1	0	1
Architecture & Design	7	4	3	0	0	0	0	0	0	0	0	0	0	0	0	7	4	3	0	0	0
Arts & Sciences	345	161	184	1	0	1	34	17	17	16	6	10	5	1	4	284	135	149	5	2	3
Business Administration	192	109	83	2	2	0	25	12	13	7	3	4	3	2	1	153	90	63	2	0	2
Communication & Information	101	26	75	2	0	2	7	2	5	9	3	6	2	0	2	77	20	57	4	1	3
Education, Health & Human Sciences	276	71	205	1	0	1	17	7	10	19	5	14	2	1	1	230	55	175	7	3	4
Engineering	119	94	25	1	1	0	47	38	9	10	7	3	2	2	0	58	46	12	1	0	1
Intercollegiate Programs	6	1	5	0	0	0	0	0	0	1	0	1	0	0	0	4	1	3	1	0	1
Law	155	82	73	1	1	0	1	0	1	18	5	13	1	1	0	127	74	53	7	1	6
Nursing	20	6	14	0	0	0	2	1	1	0	0	0	0	0	0	18	5	13	0	0	0
Social Work	158	24	134	0	0	0	2	0	2	42	5	37	4	1	3	105	16	89	5	2	3
University	128	36	92	0	0	0	7	1	6	8	1	7	0	0	0	110	34	76	3	0	3
Space Institute	36	31	5	0	0	0	5	5	0	1	1	0	0	0	0	28	24	4	2	1	1
Veterinary Medicine	69	17	52	0	0	0	1	0	1	4	1	3	2	0	2	56	16	40	6	0	6

Source: Student Information System

**Graduate Headcount Enrollment
By Race and Gender
Fall 1988-2006**

YEAR	TOTAL			AMERICAN INDIAN			ASIAN			BLACK			HISPANIC			WHITE			NOT REPORTED		
	Total	Men	Women	Total	Men	Women	Total	Men	Women	Total	Men	Women	Total	Men	Women	Total	Men	Women	Total	Men	Women
1988	5,620	2,857	2,763	19	8	11	352	260	92	304	111	193	65	42	23	4,880	2,436	2,444	0	0	0
1989	5,949	2,984	2,965	15	7	8	376	271	105	337	134	203	74	43	31	5,147	2,529	2,618	0	0	0
1990	5,882	3,034	2,848	16	7	9	416	291	125	320	129	191	76	44	32	5,054	2,563	2,491	0	0	0
1991	6,213	3,110	3,103	17	7	10	468	321	147	316	130	186	83	44	39	5,329	2,608	2,721	0	0	0
1992	6,656	3,282	3,374	17	10	7	476	326	150	371	146	225	82	37	45	5,710	2,763	2,947	0	0	0
1993	6,904	3,387	3,517	27	12	15	487	326	161	371	145	226	86	35	51	5,933	2,869	3,064	0	0	0
1994	6,804	3,324	3,480	27	13	14	471	305	166	374	151	223	79	36	43	5,853	2,819	3,034	0	0	0
1995	6,516	3,064	3,452	33	13	20	424	270	154	396	150	246	80	39	41	5,583	2,592	2,991	0	0	0
1996	6,260	2,875	3,385	31	15	16	412	264	148	352	111	241	65	34	31	5,400	2,451	2,949	0	0	0
1997	5,978	2,769	3,209	28	14	14	369	229	140	316	100	216	75	40	35	5,190	2,386	2,804	0	0	0
1998	5,919	2,677	3,242	22	8	14	397	245	152	327	109	218	76	38	38	5,097	2,277	2,820	0	0	0
1999	5,722	2,581	3,141	20	5	15	442	264	178	322	101	221	86	39	47	4,852	2,172	2,680	0	0	0
2000	5,465	2,356	3,109	17	4	13	498	284	214	318	102	216	75	28	47	4,542	1,933	2,609	15	5	10
2001	5,909	2,507	3,402	21	4	17	545	317	228	359	109	250	95	42	53	4,860	2,023	2,837	29	12	17
2002	6,106	2,647	3,459	16	5	11	589	357	232	374	112	262	88	42	46	4,929	2,088	2,841	110	43	67
2003	6,143	2,755	3,388	20	8	12	640	401	239	357	118	239	96	41	55	4,899	2,133	2,766	131	54	77
2004	6,127	2,747	3,380	22	8	14	630	380	250	369	105	264	87	38	49	4,900	2,155	2,745	119	61	58
2005	6,145	2,745	3,400	21	9	12	631	382	249	395	119	276	93	40	53	4,845	2,110	2,735	160	85	75
2006	6,041	2,698	3,343	19	8	11	654	393	261	403	120	283	97	41	56	4,696	2,061	2,635	172	75	97

Source: Student Information System

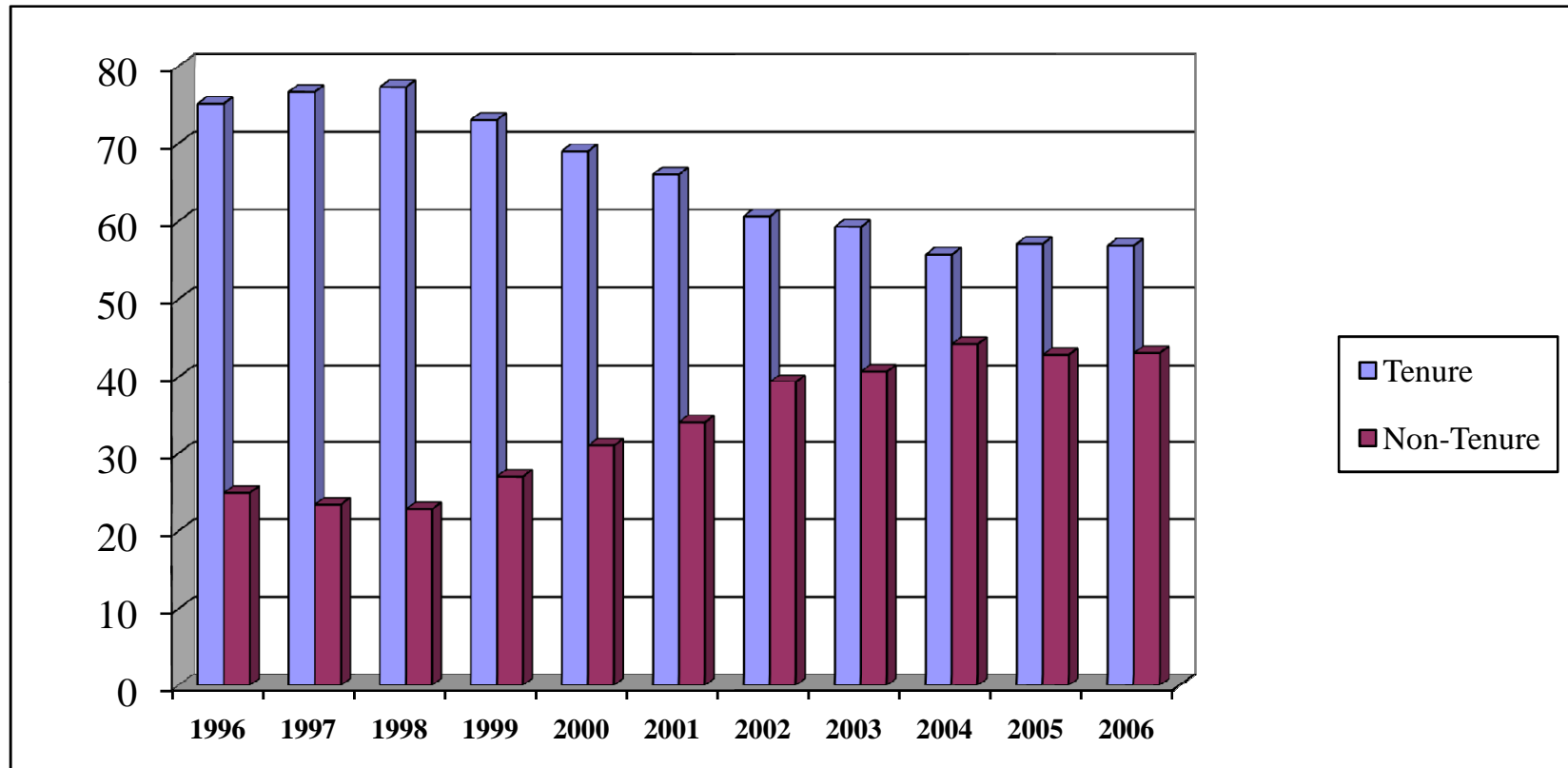
Full-Time Instructional Faculty
By College, Appointment Type, Tenure Status and Rank
Fall 2006

College	Number of Faculty	Appointment		Tenure Status		
		9-Month	12-Month	Tenured	On-Track	Non-Tenured
UNIVERSITY TOTAL	1,397	1,165	232	795	334	268
UNIVERSITY PERCENTAGES	100.0	83.4	16.6	56.9	23.9	19.2
Knoxville Total	1,179	1,137	42	659	285	235
Knoxville Percentages	100.0	96.4	3.6	55.9	24.2	19.9
Architecture & Design	29	27	2	17	8	4
Arts & Sciences - Humanities	265	264	1	126	50	89
Arts & Sciences - Natural Sciences	211	199	12	131	43	37
Arts & Sciences - Social Sciences	153	152	1	82	40	31
Business Administration	102	102	0	61	19	22
Communication & Information	63	59	4	37	15	11
Education, Health & Human Sciences	140	131	9	73	50	17
Engineering	116	112	4	79	31	6
Law	30	25	5	24	6	0
Nursing	41	38	3	12	12	17
Social Work	29	28	1	17	11	1
Agricultural Sciences & Natural Resources	102	5	97	73	24	5
Space Institute	24	23	1	16	3	5
Veterinary Medicine	92	0	92	47	22	23

College	Number of Faculty	Academic Rank				
		Professor	Associate Professor	Assistant Professor	Instructor	Lecturer
UNIVERSITY TOTAL	1,397	497	336	332	32	200
UNIVERSITY PERCENTAGES	100.0	35.6	24.1	23.8	2.3	14.3
Knoxville Total	1,179	407	273	277	24	198
Knoxville Percentages	100.0	34.5	23.2	23.5	2.0	16.8
Architecture & Design	29	9	10	6	0	4
Arts & Sciences - Humanities	265	71	56	50	1	87
Arts & Sciences - Natural Sciences	211	103	30	42	1	35
Arts & Sciences - Social Sciences	153	45	36	40	1	31
Business Administration	102	37	25	19	0	21
Communication & Information	63	16	19	16	1	11
Education, Health & Human Sciences	140	49	25	53	5	8
Engineering	116	52	36	25	3	0
Law	30	13	17	0	0	0
Nursing	41	5	8	17	11	0
Social Work	29	7	11	9	1	1
Agricultural Sciences & Natural Resources	102	48	27	23	3	1
Space Institute	24	15	7	2	0	0
Veterinary Medicine	92	27	29	30	5	1

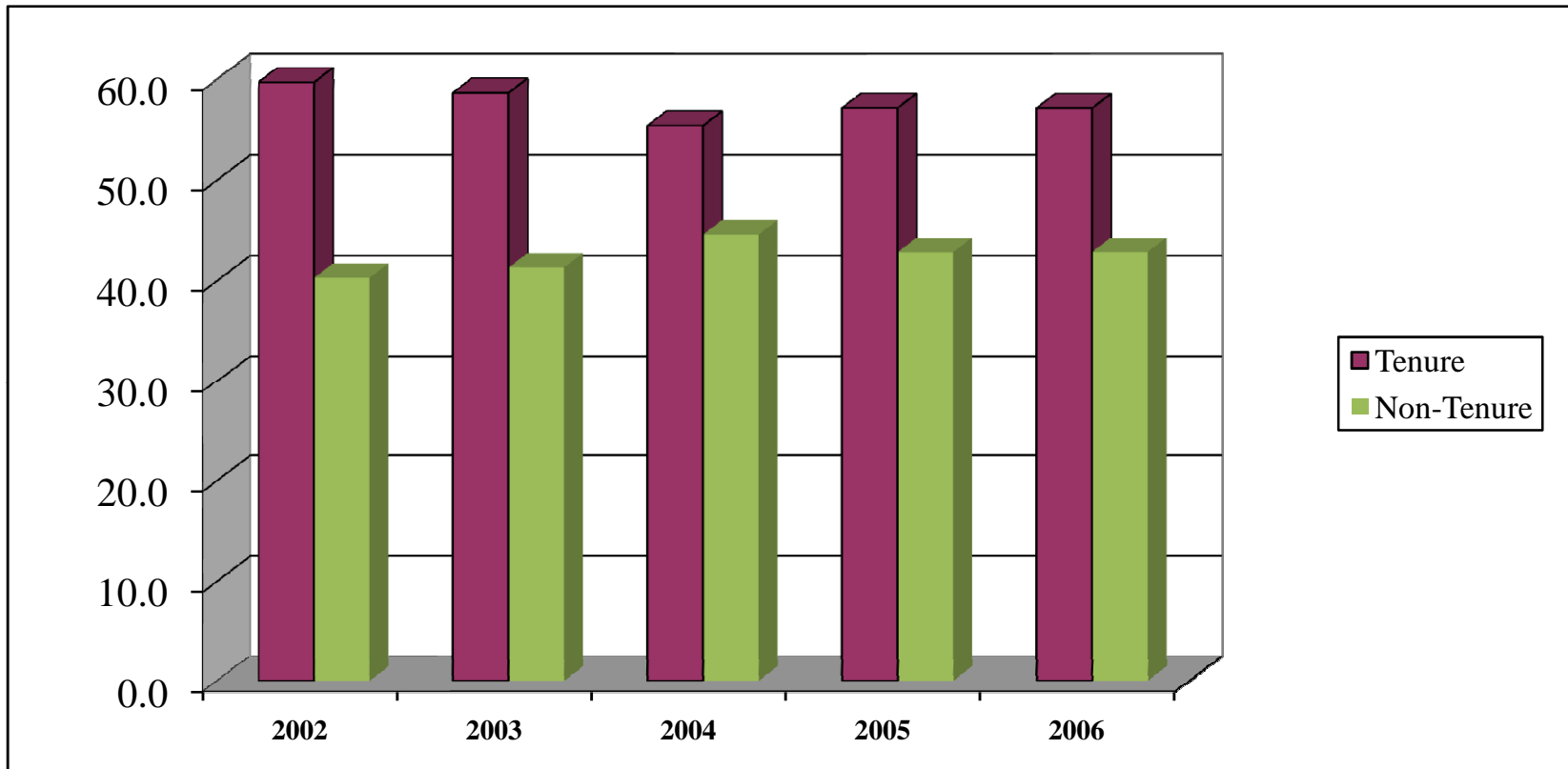
Source: IRIS

**Tenured and Non-Tenured Full-Time Instructional Faculty
Fall 1996-2006
(As Percentages)**



Source: IRIS

**Tenured and Non-Tenured Full-Time Instructional Faculty
Fall 2002-2006
(As Percentages)
Knoxville**



Source: IRIS

Full-Time Instructional Faculty
By College, Gender, Highest Degree Held and Race
Fall 2006

Colleges	Number of Faculty	Gender		HIGHEST DEGREE HELD				
		Men	Women	PhD	Profes- sional	Masters	Bachelor	High School
UNIVERSITY TOTAL	1,397	896	501	1,067	90	225	14	1
UNIVERSITY PERCENTAGES	100.0	64.1	35.9	76.4	6.4	16.1	1.0	0.1
Knoxville Total	1,179	733	446	922	26	216	14	1
Knoxville Percentages	100.0	62.2	37.8	78.2	2.2	18.3	1.2	0.1
Architecture & Design	29	20	9	6	0	20	3	0
Arts & Sciences - Humanities	265	137	128	167	0	91	6	1
Arts & Sciences - Natural Sciences	211	168	43	191	0	20	0	0
Arts & Sciences - Social Sciences	153	100	53	141	0	11	1	0
Business Administration	102	76	26	88	1	12	1	0
Communication & Information	63	28	35	51	0	11	1	0
Education, Health & Human Sciences	140	59	81	108	2	29	1	0
Engineering	116	109	7	114	0	1	1	0
Law	30	18	12	3	23	4	0	0
Nursing	41	3	38	25	0	16	0	0
Social Work	29	15	14	28	0	1	0	0
Agricultural Sciences & Natural Resources	102	83	19	93	1	8	0	0
Space Institute	24	23	1	22	1	1	0	0
Veterinary Medicine	92	57	35	30	62	0	0	0

Colleges	Number of Faculty	RACE				
		American Indian	Asian	Black	Hispanic	White
UNIVERSITY TOTAL	1,397	5	117	54	30	1,191
UNIVERSITY PERCENTAGES	100.0	0.4	8.4	3.9	2.1	85.3
Knoxville Total	1,179	4	99	46	27	1,003
Knoxville Percentages	100.0	0.3	8.4	3.9	2.3	85.1
Architecture & Design	29	0	1	1	0	27
Arts & Sciences - Humanities	265	0	8	13	13	231
Arts & Sciences - Natural Sciences	211	1	22	1	8	179
Arts & Sciences - Social Sciences	153	1	9	5	0	138
Business Administration	102	0	8	2	2	90
Communication & Information	63	0	4	2	2	55
Education, Health & Human Sciences	140	1	11	11	0	117
Engineering	116	0	33	2	1	80
Law	30	0	0	3	0	27
Nursing	41	0	1	2	0	38
Social Work	29	1	2	4	1	21
Agricultural Sciences & Natural Resources	102	0	8	2	0	92
Space Institute	24	0	4	1	0	19
Veterinary Medicine	92	1	6	5	3	77

Source: IRIS

**Age and Length of Service of Full-Time Instructional Faculty
Fall 1997-2006
(As Percentages)**

Age Distribution	Fall 1997	Fall 1998	Fall 1999	Fall 2000	Fall 2001	Fall 2002	Fall 2003	Fall 2004	Fall 2005	Fall 2006
< 30	1.0	0.6	1.0	1.4	1.6	2.3	1.5	1.8	1.6	1.9
30-39	15.6	15.5	12.8	13.4	14.2	17.1	18.4	20.5	19.8	21.0
40-49	31.4	32.0	31.4	31.9	31.2	29.0	27.8	26.1	26.6	25.3
50-59	32.6	33.6	35.4	34.4	34.7	34.0	31.5	30.6	30.9	31.1
60-65	14.4	14.0	14.7	14.1	14.1	13.4	15.3	15.4	14.7	14.4
> 65	5.0	4.2	4.7	4.7	4.3	4.2	5.5	5.7	6.4	6.3

Length of Service	Fall 1997	Fall 1998	Fall 1999	Fall 2000	Fall 2001	Fall 2002	Fall 2003	Fall 2004	Fall 2005	Fall 2006
0 - 4	19.1	19.0	16.3	19.2	17.1	31.3	32.5	33.6	34.0	33.3
5 - 9	17.5	17.5	18.7	18.7	18.6	12.8	12.0	14.3	14.3	17.5
10 - 14	12.7	13.5	14.6	13.7	15.3	12.2	13.8	13.6	13.0	11.1
15 - 19	12.5	12.2	11.9	11.4	11.6	12.4	10.1	9.5	10.1	10.9
>19	38.3	37.8	38.4	37.0	37.4	31.3	31.5	29.1	28.6	27.2

Source: IRIS

**Distribution of Employees
By EEO Category
Fall 2006**

EEO CATEGORY	TOTAL NUMBER	MEN		WOMEN		WHITE		BLACK		TOTAL MINORITY	
		Number	Percent	Number	Percent	Number	Percent	Number	Percent	Number	Percent
UNIVERSITY TOTALS	8,325	4,362	52.4	3,963	47.6	7,273	87.4	587	7.1	1,052	12.6
EXECUTIVE/ADMINISTRATIVE/MANAGERIAL	338	186	55.0	152	45.0	308	91.1	26	7.7	30	8.9
Executive	56	39	69.6	17	30.4	51	91.1	4	7.1	5	8.9
Administrative	282	147	52.1	135	47.9	257	91.1	22	7.8	25	8.9
FACULTY	1,954	1,214	62.1	740	37.9	1,677	85.8	71	3.6	277	14.2
Professor	618	515	83.3	103	16.7	563	91.1	11	1.8	55	8.9
Associate Professor	406	252	62.1	154	37.9	352	86.7	16	3.9	54	13.3
Assistant Professor	436	241	55.3	195	44.7	316	72.5	29	6.7	120	27.5
Instructor	65	16	24.6	49	75.4	62	95.4	2	3.1	3	4.6
Lecturer	406	175	43.1	231	56.9	372	91.6	12	3.0	34	8.4
Other Faculty	23	15	65.2	8	34.8	12	52.2	1	4.3	11	47.8
PROFESSIONAL	1,600	778	48.6	822	51.4	1,366	85.4	79	4.9	234	14.6
Professional	1,600	778	48.6	822	51.4	1,366	85.4	79	4.9	234	14.6
SECRETARIAL/CLERICAL	1,560	156	10.0	1,404	90.0	1,347	86.3	182	11.7	213	13.7
Supervisory	49	19	38.8	30	61.2	46	93.9	2	4.1	3	6.1
Non-Supervisory	1,511	137	9.1	1,374	90.9	1,301	86.1	180	11.9	210	13.9
TECHNICAL/PARAPROFESSIONAL	498	216	43.4	282	56.6	458	92.0	13	2.6	40	8.0
Supervisory	10	7	70.0	3	30.0	10	100.0	0	0.0	0	0.0
Non-Supervisory	488	209	42.8	279	57.2	448	91.8	13	2.7	40	8.2
SKILLED CRAFTS	349	342	98.0	7	2.0	343	98.3	6	1.7	6	1.7
Supervisory	37	37	100.0	0	0.0	36	97.3	1	2.7	1	2.7
Non-Supervisory	312	305	97.8	7	2.2	307	98.4	5	1.6	5	1.6
SERVICE MAINTENANCE	2,026	1,470	72.6	556	27.4	1,774	87.6	210	10.4	252	12.4
Supervisory	71	50	70.4	21	29.6	58	81.7	13	18.3	13	18.3
Non-Supervisory	1,955	1,420	72.6	535	27.4	1,716	87.8	197	10.1	239	12.2

Source: IRIS

**Distribution of Employees
By EEO Category and Budget Entity
Fall 2006**

EEO CATEGORY	TOTAL				Knoxville			
	Number	FTE	Full-time	Part-time	Number	FTE	Full-time	Part-time
All Employees	8,325	7,603	7,041	1,284	6,496	5,891	5,486	1,010
EXECUTIVE/ADMINISTRATIVE/MANAGERIAL	338	332	323	15	287	282	275	12
FACULTY	1,954	1,772	1,650	304	1,667	1,500	1,385	282
PROFESSIONAL	1,600	1,550	1,474	126	1,013	970	905	108
SECRETARIAL/CLERICAL	1,560	1,444	1,293	267	1,140	1,057	980	160
TECHNICAL/PARAPROFESSIONAL	498	449	409	89	322	285	260	62
SKILLED CRAFTS	349	345	343	6	331	328	327	4
SERVICE MAINTENANCE	2,026	1,712	1,549	477	1,736	1,468	1,354	382

EEO CATEGORY	Space Institute				Institute of Agriculture (Veterinary Medicine)			
	Number	FTE	Full-time	Part-time	Number	FTE	Full-time	Part-time
All Employees	109	96	88	21	1,720	1,617	1,467	253
EXECUTIVE/ADMINISTRATIVE/MANAGERIAL	8	7	7	1	43	43	41	2
FACULTY	33	26	24	9	254	246	241	13
PROFESSIONAL	23	21	19	4	564	559	550	14
SECRETARIAL/CLERICAL	20	18	16	4	400	368	297	103
TECHNICAL/PARAPROFESSIONAL	7	7	6	1	169	157	143	26
SKILLED CRAFTS	9	8	8	1	9	8	8	1
SERVICE MAINTENANCE	9	9	8	1	281	235	187	94

Source: IRIS

Note: Regular and term employees

Chairs of Excellence As of October 2006

CHAIR NAME	CHAIRHOLDER
Knoxville	
Bernadotte E. Schmitt Chair of History	Dr. Robert J. Norrell
Bernard Blasingame Chair in Agricultural Policy	Dr. Daryll E. Ray
Bruce Chair of Excellence in Business Policy	Dr. John T. Mentzer
Chair of Science, Technology & Medical Writing	Dr. Mark Littmann
Clayton Homes Chair in Finance	Dr. James Wansley
Condra Chair of Computer Integrated Engineering & Manufacturing	vacant
Condra Chair of Power Electronics Applications	vacant
Forrest & Patsy Shumway Chair in Romance Language	Dr. Patrick Brady
Goodrich Chair in Waste Management & Environmental Engineering	Dr. Thomas Urbanik, III
Hodges Chair of English	vacant
Ivan Racheff Chair of Materials Science & Engineering	Dr. Peter K. Liaw
Ivan Racheff Chair of Plant Molecular Genetics	Dr. Neal Stewart
J. Fred Holly Chair in Political Economy	Dr. William S. Neilson
Nancy Gore Hunger Chair in Environmental Studies	Dr. Daniel Simberloff
Pilot Chair in Leadership	Dr. Jan R. Williams
UTK Willis Lincoln Chair in Physics	Dr. John Quinn
Space Institute	
Edward J. and Carolyn P. Boling Chair of Space Propulsion	Dr. Gary A. Flandro
H. H. Arnold Chair of Computational Mechanics	vacant

Source: Office of the Vice President for Research

**Unrestricted Expenditures and Transfers
By Budgetary Function
With Percent Distribution of Expenditures
FY 2003-2007**

	ACTUAL				Budget
	FY 2003	FY 2004	FY 2005	FY 2006*	FY 2007
TOTAL UNRESTRICTED CURRENT FUNDS					
EXPENDITURES & TRANSFERS	447,140,311	457,929,926	487,489,926	497,686,366	527,358,052
TOTAL EDUCATION & GENERAL EXPENDITURES	321,509,208	335,435,783	353,235,294	379,863,103	386,772,382
TRANSFERS (IN)/OUT	13,985,368	9,327,906	14,496,259	4,399,604	15,123,280
TOTAL EDUCATION & GENERAL	335,494,576	344,763,689	367,731,553	384,262,707	401,895,662
Fund Balance Addition/(Reduction)	(1,931,001)	(363,619)	510,514	(2,073,067)	
AUXILIARY ENTERPRISES FUNDS	113,576,736	113,529,856	119,247,859	115,496,726	125,462,390
EDUCATION & GENERAL					
Instruction	161,309,582	164,929,489	172,406,800	183,975,134	190,273,458
Research	16,191,895	16,887,440	17,756,500	23,531,043	15,053,503
Public Service	6,061,170	9,089,390	7,022,745	6,898,920	7,971,928
Academic Support	37,495,870	38,977,479	42,299,936	44,675,396	46,058,593
Student Services	32,956,733	37,403,171	38,991,819	35,206,636	38,099,557
Institutional Support	8,634,739	8,385,816	9,390,423	12,003,848	12,025,306
Operation and Maintenance of Physical Plant	38,963,888	40,042,263	41,413,910	42,870,781	45,109,217
Scholarship/Fellowship	19,895,331	19,720,735	23,953,161	30,701,345	32,180,820
EXPENSES AS A PERCENT OF TOTAL					
EDUCATION & GENERAL					
Instruction	48.1%	47.8%	46.9%	47.9%	47.3%
Research	4.8%	4.9%	4.8%	6.1%	3.7%
Public Service	1.8%	2.6%	1.9%	1.8%	2.0%
Academic Support	11.2%	11.3%	11.5%	11.6%	11.5%
Student Services	9.8%	10.8%	10.6%	9.2%	9.5%
Institutional Support	2.6%	2.4%	2.6%	3.1%	3.0%
Operation & Maintenance of Physical Plant	11.6%	11.6%	11.3%	11.2%	11.2%
Scholarship/Fellowship	5.9%	5.7%	6.5%	8.0%	8.0%

*Probable

Source: Office of the Director of Finance

**Unrestricted Current Revenue
By Budgetary Function and Revenue Dollars
Per Full-Time Equivalent Student
FY 2003-2007**

	ACTUAL				Budget
	FY 2003	FY 2004	FY 2005	FY 2006*	FY 2007
TOTAL REVENUE	447,140,309	457,929,924	487,489,926	497,686,366	527,358,052
TOTAL EDUCATION & GENERAL REVENUE	333,563,573	344,400,068	368,242,067	382,189,640	401,895,662
TOTAL AUXILIARY REVENUE	113,576,736	113,529,856	119,247,859	115,496,726	125,462,390
EDUCATION & GENERAL REVENUE					
Tuition and Fees	143,393,236	152,240,279	165,276,641	181,225,916	191,063,098
State Appropriations	161,302,900	159,267,300	169,086,200	172,061,300	179,741,100
Grants and Contracts	16,358,858	16,585,584	17,741,920	16,245,000	16,950,000
Sale and Service of Educational Activities	5,164,175	5,370,747	6,722,866	5,630,676	6,023,803
Other Sources	7,344,404	10,936,158	9,414,440	7,026,748	8,117,661
REVENUE DOLLARS PER FULL-TIME EQUIVALENT (FTE) STUDENT					
Revenue dollars per FTE Student	19,695	20,683	21,578	21,516	22,434
Education and General Revenue dollars per FTE Student	14,692	15,556	16,300	16,523	17,097
State Appropriation dollars per FTE Student	7,105	7,194	7,484	7,438	7,646
Number of FTE Students	22,703	22,140	22,592	23,131	23,507
(as of Fall Semester)	(Fall 2002)	(Fall 2003)	(Fall 2004)	(Fall 2005)	(Fall 2006)

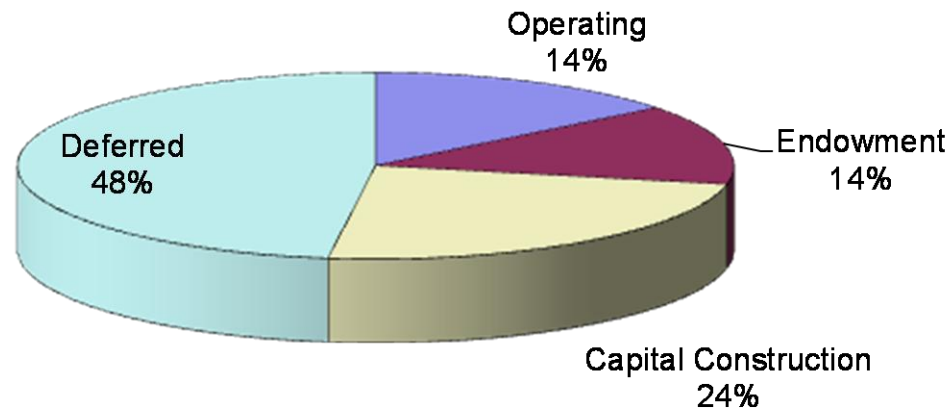
*Probable

Source: Office of the Director of Finance

Notes: Endowment Income only includes income from Land Grant Endowment. Income from endowments created by private gifts are credited to the University of Tennessee System. Beginning in FY 2001, Gifts are reported separately from Grants and Contracts.

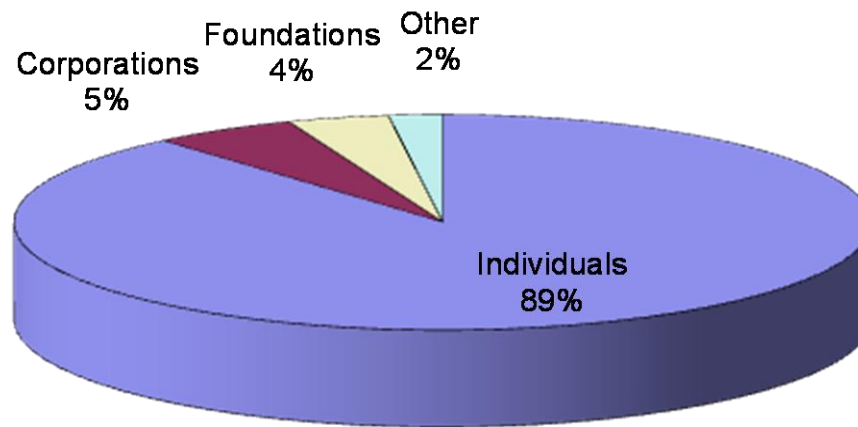
UT KNOXVILLE CAMPAIGN ANALYSIS BY PURPOSE

January 1, 2005 – December 31, 2006: \$191,660,085



Source: Office of Advancement Services

UT KNOXVILLE CAMPAIGN ANALYSIS BY SOURCE
January 1, 2005 – December 31, 2006: \$191,660,085



Source: Office of Advancement Services

**The Campaign for Tennessee
January 1, 2005 - December 31, 2006**

By Source	UT Knoxville	Agriculture Institute	UT Athletics	Total
Individual	169,972,556	18,524,712	78,750,009	267,247,277
Corporations	10,450,769	3,673,793	15,912,020	30,036,582
Foundations	7,340,713	3,162,156	5,912,371	16,415,240
Other	3,896,047	1,519,636	191,266	5,606,949
January 1, 2005 - December 31, 2006	191,660,085	26,880,297	100,765,666	319,306,048

By Purpose	UT Knoxville	Agriculture Institute	UT Athletics	Total
Operating	27,471,493	13,526,084	38,241,679	79,239,256
Endowment	26,627,991	4,552,313	3,404,232	34,584,536
Capital Construction	45,786,729	348,759	50,743,070	96,878,558
Deferred	91,773,872	8,453,141	8,376,685	108,603,698
January 1, 2005 - December 31, 2006	191,660,085	26,880,297	100,765,666	319,306,048

Source: Office of Advancement Services

**Average Salaries of Full-Time Instructional Faculty
By College and Rank
FY 2006-2007**

COLLEGE / SCHOOL	ALL RANKS	PROFESSOR	ASSOCIATE PROFESSOR	ASSISTANT PROFESSOR	INSTRUCTOR	LECTURER
ALL COLLEGES	72,795	97,185	73,104	59,892	45,654	37,429
Agricultural Science and Natural Resources	72,862	86,951	66,380	56,732	41,394	*
Architecture & Design	70,796	87,647	73,441	58,829		44,221
Arts and Sciences - Humanities	54,334	79,426	61,114	49,016	*	32,704
Arts and Sciences - Natural Sciences	79,413	103,383	72,887	61,487	*	36,389
Arts and Sciences - Social Sciences	61,583	84,875	65,972	53,111	*	34,151
Business Administration	102,674	130,324	104,589	90,457		62,731
Communication & Information	63,285	94,224	64,504	52,453	*	33,078
Education, Health & Human Sciences	68,209	89,685	65,219	57,108	34,302	40,744
Engineering	89,977	106,042	80,614	73,354	62,394	
Law	113,216	136,245	95,606			
Nursing	60,752	88,203	68,491	590,094	45,209	
Social Work	71,951	109,012	66,509	54,656	*	*
Space Institute	85,824	96,026	69,626	*		
Veterinary Medicine	77,748	95,461	78,865	67,393	44,861	*

Source: IRIS

*If less than three individuals, salaries are not reported

**Median Graduate Assistant Stipends
FY 1987-2007**

FY	TOTAL ASSISTANTSHIPS		GRADUATE TEACHING ASSOCIATE		GRADUATE TEACHING ASSISTANT		GRADUATE RESEARCH ASSISTANT		GRADUATE ASSISTANT	
	Number of Students	Median Stipend	Number of Students	Median Stipend	Number of Students	Median Stipend	Number of Students	Median Stipend	Number of Students	Median Stipend
1986-87	1,432	6,281	6	5,856	682	6,497	265	6,871	479	5,130
1987-88	1,468	6,535	178	6,846	541	6,697	309	6,953	440	5,335
1988-89	1,581	6,773	193	7,120	553	6,847	279	6,891	556	5,870
1989-90	1,659	7,095	212	7,405	571	7,121	351	7,821	525	5,884
1990-91	1,755	7,620	227	8,265	550	7,651	407	8,259	571	6,618
1991-92	1,727	7,697	247	7,701	542	7,721	440	8,180	498	6,577
1992-93	1,809	7,712	247	7,701	584	7,719	424	8,834	554	6,577
1993-94	1,881	8,077	276	8,247	606	8,005	445	9,652	554	7,041
1994-95	1,928	8,805	336	8,923	585	9,006	426	10,144	581	7,470
1995-96	1,855	8,666	317	8,922	558	8,624	388	9,829	592	7,323
1996-97	1,786	8,926	320	9,230	554	9,386	388	10,110	524	7,282
1997-98	1,731	9,028	307	9,231	557	9,434	354	10,161	513	7,455
1998-99	1,777	9,462	329	9,686	550	9,045	364	11,119	534	7,438
1999-00	1,780	9,956	316	10,074	591	10,196	347	11,583	526	7,730
2000-01	1,762	10,347	285	10,299	584	10,425	338	12,191	555	8,027
2001-02	1,879	11,979	290	12,001	622	11,823	355	12,948	612	8,366
2002-03	2,113	11,993	298	12,005	636	11,989	511	12,577	668	10,010
2003-04	2,217	12,224	306	12,310	681	12,240	573	13,016	657	9,791
2004-05	2,211	12,576	323	12,638	697	12,950	604	13,410	587	9,816
2005-06	2,202	12,800	298	13,094	714	13,338	623	13,742	567	10,110
2006-07	2,210	13,409	331	13,963	728	13,940	606	14,629	545	11,005

Source: IRIS

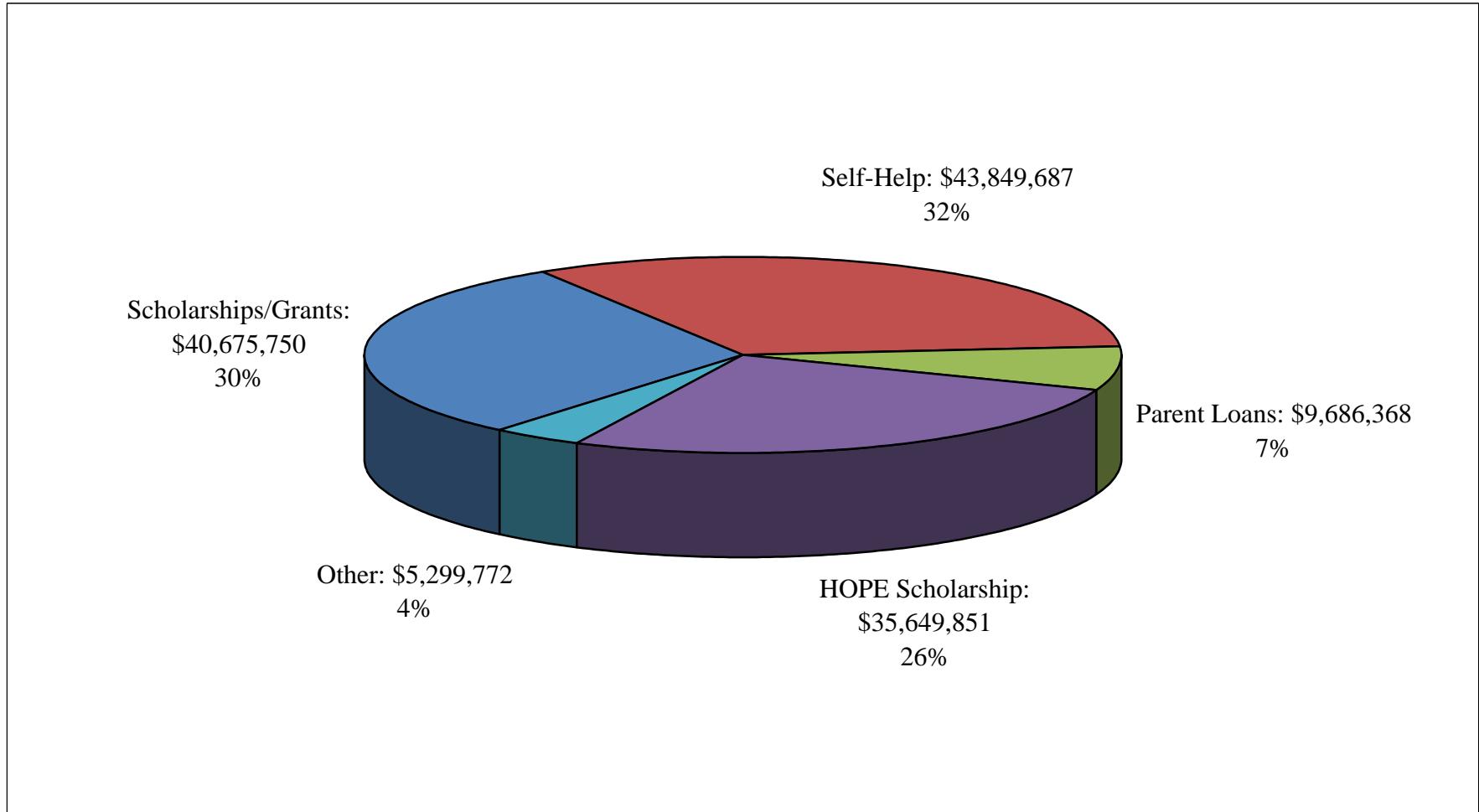
Note: Stipends are equated to a half-time (20-hour week) academic year salary

**Student Tuition
By Level
Academic Years
2003-2007**

	2002-2003		2003-2004		2004-2005		2005-2006		2006-2007	
	IN-STATE	OUT-OF-STATE	IN-STATE	OUT-OF-STATE	IN-STATE	OUT-OF-STATE	IN-STATE	OUT-OF-STATE	IN-STATE	OUT-OF-STATE
KNOXVILLE CAMPUS										
UNDERGRADUATE	4,056	12,408	4,450	13,532	4,748	14,528	5,290	16,360	5,622	17,188
GRADUATE	4,590	12,942	5,032	14,114	5,376	15,156	6,000	17,070	6,366	17,932
LAW	7,156	19,212	7,830	19,886	8,396	21,384	9,412	24,106	9,934	25,290
VETERINARY MEDICINE	8,458	22,914	8,934	24,810	10,176	28,396	13,374	37,440	13,374	37,440
SPACE INSTITUTE										
GRADUATE	4,190	12,292	4,550	13,382	5,376	14,295	5,508	16,278	5,754	17,020

Source: Bursar's Office

Need-Based Financial Aid Academic Year 2006-2007



Source: Office of Financial Aid

**Number and Percent of Occupancy for Student Residence Halls
And Married/Graduate Student Housing
Fall 2006**

STUDENT RESIDENCE HALLS				
HALL NAME	NUMBER OF ROOMS	NUMBER OF BEDS	OCCUPANCY AS OF 9-20-06	PERCENT OCCUPANCY
TOTAL	3,593	7,219	6,807	94%
Apartment Residence Hall	306	1,134	1,055	93%
Clement Hall	353	703	677	96%
Gibbs Hall	116	218	186	85%
Greve Hall	199	358	308	86%
Hess Hall	512	954	936	98%
Humes Hall	260	518	516	100%
Massey Hall	292	582	418	72%
Melrose Hall	224	188	183	97%
Morrill Hall	379	752	717	95%
North Carrick Hall	248	494	509	103%
Reese Hall	260	514	517	101%
South Carrick Hall	271	530	526	99%
Strong Hall	173	274	259	95%

MARRIED/GRADUATE STUDENT HOUSING				
APARTMENT COMPLEX	NUMBER OF BUILDINGS	NUMBER OF APARTMENTS	OCCUPANCY AS OF 9-20-06	PERCENT OCCUPANCY
TOTAL	39	1,064	920	86%
Golf Range Apartments	25	367	319	87%
Laurel Apartments	1	308	271	88%
Sutherland Apartments	13	389	330	85%

Source: Department of University Housing

**Main Library
Holdings and Expenditures
FY 2002-2006**

CATALOGED MATERIALS	FY 01/02	FY 02/03	FY 03/04	FY 04/05	FY 05/06	FY 02-06 % CHANGE
VOLUMES	2,152,555	2,288,183	2,319,379	2,360,907	2,555,502	18.7
TITLES	1,182,995	1,231,250	1,258,773	1,296,841	1,488,976	25.9
NON-PRINT MATERIALS						
Audio	28,525	30,048	26,638	27,230	28,029	(1.7)
Cartographic	4,339	6,455	6,778	5,866	390,115 *	8,890.9
Film/Video	9,719	10,905	11,290	11,717	12,862	32.3
Graphic	124,153	125,820	123,252	123,000	122,138	(1.6)
Microform	2,476,362	2,566,626	2,609,511	2,620,766	2,649,669	7.0
Computer File/CD-ROM	1,431	1,309	1,508	1,925	2,012	40.6
PERIODICALS AND OTHER SERIALS RECEIVED						
Number of Titles	14,073	14,284	15,286	25,476	22,807	62.1
EXPENDITURES	12,302,454	15,605,403	15,361,265	16,121,770	16,773,816	36.3

*Note: Previously reported just cartographic items added each year. FY 05/06 is TOTAL cartographic materials.
Source: Office of the Dean of Libraries

**Law Library
Holdings and Expenditures
FY 2002-2006**

CATALOGED MATERIALS	FY 01/02	FY 02/03	FY 03/04	FY 04/05	FY 05/06	FY 02-06 % CHANGE
VOLUMES AND EQUIVALENTS	515,524	529,720	544,317	558,262	571,108	10.8
TITLES	98,975	104,458	109,863	112,208	116,828	18.0
NON-PRINT MATERIALS						
Non-print Titles	39,639	40,555	42,210	42,566	44,133	11.3
Microfilm Reels	1,134	1,148	1,162	1,177	1,192	5.1
Microfiche Units	1,254,502	1,290,236	1,333,062	1,367,040	1,393,679	11.1
Microform Equivalent Volumes	214,754	220,776	227,984	233,820	238,497	11.1
SERIALS						
Serial Titles	6,174	6,274	5,909	5,809	5,855	(5.2)
Number of Serial Subscriptions	6,847	6,981	6,701	6,650	6,733	(1.7)
EXPENDITURES	2,318,174	2,488,537	2,508,020	2,563,047	2,530,986	9.2

Source: College of Law Library

UT Knoxville Campus Libraries and Centers

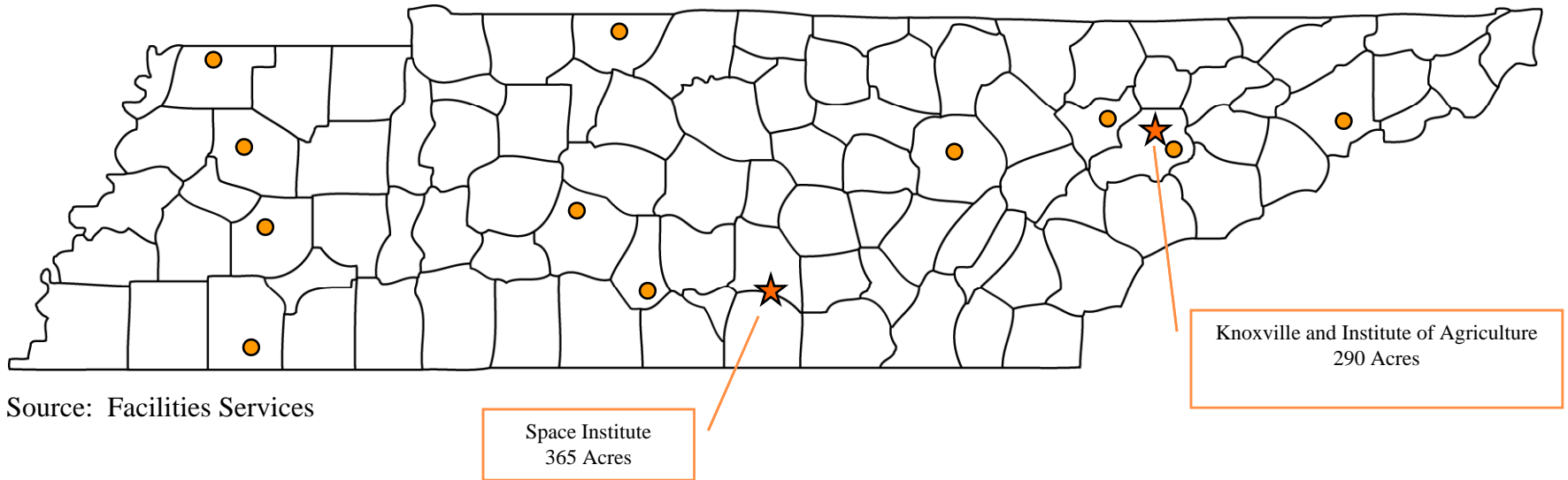
	Web Address
	The University of Tennessee Libraries (main page and online databases)
Library	
George F. Devine Music Library John C. Hodges Main Library Webster Pendergrass Agriculture-Veterinary Medicine Library Special Collections Library Social Work Library	http://www.lib.utk.edu/music/ http://www.lib.utk.edu/branches/hodges.html http://www.lib.utk.edu/agvet/ http://www.lib.utk.edu/spcoll/ http://www.lib.utk.edu/swn/
Center	
Howard H. Baker, Jr. Center for Public Policy at the University of Tennessee, Knoxville University of Tennessee, Knoxville Digital Library Center MPA: Modern Political Archives	http://bakercenter.utk.edu/ http://diglib.lib.utk.edu/dlc/ http://mpa.utk.edu/

**Space Institute Library
Holdings and Expenditures
FY 2002-2006**

CATALOGED MATERIALS	FY 01/02	FY 02/03	FY 03/04	FY 04/05	FY 05/06	FY 02-06 % CHANGE
VOLUMES	75,788	76,075	76,187	76,509	76,605	1.1
COLLECTIONS						
Bound Volumes	24,380	24,556	24,674	24,868	25,092	2.9
Technical Reports	51,407	51,463	51,488	51,499	51,513	0.2
NON-PRINT MATERIALS						
Film/Video	79	79	79	79	81	2.5
Microform	211,865	213,552	213,552	213,552	213,552	0.8
Computer File	64	83	83	83	86	34.4
Other Audio/Visual	154	154	154	154	154	0.0
PERIODICALS AND OTHER SERIALS RECEIVED						
Number of Titles	186	154	148	148	148	(20.4)
EXPENDITURES	215,181	197,348	211,449	207,214	219,833	2.2

Source: Office of the Dean of Libraries

University of Tennessee, Knoxville Facilities and Acreage Fall 2006



- ★ Campuses
- Branch Agricultural Experiment Stations (approximately 40,000 acres)

**One Year Retention Rates
First-Time Full-Time Freshmen
Fall Terms 1983-2005**

Enrollment Year	Total		Men		Women		Black		White		Other	
	Number	Rate	Number	Rate	Number	Rate	Number	Rate	Number	Rate	Number	Rate
1983	3,150	77.9	1,631	77.9	1,519	77.9	184	75.5	2,874	78.1	92	75.0
1984	3,195	78.0	1,607	77.5	1,588	78.5	175	70.9	2,941	78.4	79	78.5
1985	3,299	78.7	1,694	77.9	1,605	79.6	191	75.4	3,055	79.0	53	77.4
1986	3,503	77.5	1,811	76.9	1,692	78.1	205	78.5	3,246	77.4	52	80.8
1987	3,683	78.6	1,886	77.7	1,797	79.5	181	74.0	3,437	78.8	65	78.5
1988	3,708	78.9	1,959	76.7	1,749	81.3	192	73.4	3,462	79.2	54	74.1
1989	3,296	80.0	1,696	79.4	1,600	80.7	185	80.5	3,045	80.1	66	77.3
1990	3,336	79.5	1,706	78.5	1,630	80.6	239	81.2	3,006	79.1	91	87.9
1991	2,986	81.5	1,540	80.7	1,446	82.4	217	80.7	2,668	81.4	101	86.1
1992	3,136	80.0	1,584	79.3	1,552	80.9	209	78.5	2,815	80.0	112	83.9
1993	2,799	78.6	1,391	77.3	1,408	79.8	175	78.9	2,521	78.4	103	81.6
1994	2,850	75.9	1,470	74.5	1,380	77.4	144	77.1	2,604	75.8	102	75.5
1995	3,427	76.8	1,639	74.8	1,788	78.6	153	83.7	3,141	76.2	133	84.2
1996	3,637	76.7	1,795	74.4	1,842	78.9	192	79.7	3,305	76.4	140	78.6
1997	3,823	78.1	1,882	76.7	1,941	79.4	243	84.0	3,408	77.8	172	76.2
1998	3,747	78.7	1,791	76.7	1,956	80.6	273	78.0	3,336	79.0	138	73.2
1999	4,099	75.4	1,931	71.7	2,168	78.7	328	72.6	3,607	75.8	164	74.4
2000	3,794	78.3	1,840	76.3	1,954	80.3	268	81.5	3,364	77.7	162	85.2
2001	3,898	75.5	1,914	72.1	1,984	78.8	190	75.1	3,405	75.7	203	69.0
2002	3,638	77.8	1,761	76.7	1,877	78.8	321	83.5	3,115	77.5	202	73.3
2003	3,529	78.0	1,721	76.7	1,808	79.3	319	80.3	3,038	77.6	172	82.0
2004	4,395	79.6	2,106	77.5	2,289	81.6	440	81.8	3,726	79.5	229	76.9
2005	4,241	81.7	2,009	81.1	2,232	82.3	444	81.8	3,529	82.0	268	78.4

Source: Student Information System

**Four Year Graduation Rates
First-Time Full-Time Freshmen
Fall Terms 1983-2002**

Enrollment Year	Total		Men		Women		Black		White		Other	
	Number	Rate	Number	Rate	Number	Rate	Number	Rate	Number	Rate	Number	Rate
1983	3,150	23.0	1,631	17.7	1,519	28.8	184	10.9	2,874	23.8	92	25.0
1984	3,195	24.9	1,607	19.7	1,588	30.1	175	9.7	2,941	25.6	79	30.4
1985	3,299	24.1	1,694	19.7	1,605	28.8	191	11.0	3,055	24.8	53	30.2
1986	3,503	22.2	1,811	17.7	1,692	27.0	205	8.8	3,246	23.0	52	26.9
1987	3,683	21.4	1,886	14.5	1,797	28.6	181	7.7	3,437	22.0	65	26.2
1988	3,708	22.8	1,959	16.5	1,749	29.8	192	10.4	3,462	23.5	54	22.2
1989	3,296	24.7	1,696	19.6	1,600	30.1	185	8.7	3,045	25.6	66	30.3
1990	3,336	23.6	1,706	17.4	1,630	30.2	239	12.1	3,006	24.4	91	27.5
1991	2,986	25.1	1,540	17.3	1,446	33.5	217	21.2	2,668	25.1	101	34.7
1992	3,136	22.6	1,584	16.8	1,552	28.6	209	13.9	2,815	23.2	112	24.1
1993	2,799	24.1	1,391	17.3	1,408	30.8	175	15.4	2,521	24.7	103	23.3
1994	2,850	23.6	1,470	15.5	1,380	32.3	144	12.5	2,604	24.4	102	18.6
1995	3,427	26.8	1,639	20.2	1,788	32.9	153	19.0	3,141	27.0	133	31.6
1996	3,637	28.4	1,795	19.9	1,842	36.8	192	17.7	3,305	29.0	140	30.7
1997	3,823	27.5	1,882	19.3	1,941	35.4	243	20.6	3,408	28.0	172	26.2
1998	3,747	26.7	1,791	16.7	1,956	35.9	273	18.7	3,336	27.6	138	21.7
1999	4,099	28.7	1,931	18.9	2,168	37.4	328	24.7	3,607	29.1	164	26.2
2000	3,794	30.6	1,840	22.3	1,954	38.4	268	28.0	3,364	30.5	162	37.0
2001	3,898	29.4	1,914	21.2	1,984	37.4	290	20.7	3,405	30.4	203	25.6
2002	3,636	30.0	1,759	21.0	1,877	38.4	321	26.2	3,113	30.8	202	23.3

Source: Student Information System and Academic Inventory

**Five Year Graduation Rates
First-Time Full-Time Freshmen
Fall Terms 1983-2001**

Enrollment Year	Total		Men		Women		Black		White		Other	
	Number	Rate	Number	Rate	Number	Rate	Number	Rate	Number	Rate	Number	Rate
1983	3,150	48.5	1,631	47.0	1,519	50.2	184	34.8	2,874	49.4	92	48.9
1984	3,195	45.6	1,607	42.1	1,588	49.1	175	30.3	2,941	46.3	79	50.6
1985	3,299	47.5	1,694	45.5	1,605	49.6	191	28.3	3,055	48.7	53	49.1
1986	3,503	45.0	1,811	41.7	1,692	48.5	205	32.2	3,246	45.9	52	40.4
1987	3,683	45.3	1,886	41.1	1,797	49.6	181	30.9	3,437	45.9	65	53.8
1988	3,708	49.1	1,959	44.1	1,749	54.7	192	36.5	3,462	49.8	54	46.3
1989	3,296	48.4	1,696	44.7	1,600	52.3	185	34.1	3,045	49.2	66	53.0
1990	3,336	48.5	1,706	44.1	1,630	53.1	239	33.9	3,006	49.5	91	55.0
1991	2,986	48.9	1,540	42.3	1,446	56.0	217	39.2	2,668	49.7	101	49.5
1992	3,136	48.4	1,584	44.6	1,552	52.3	209	34.9	2,815	49.4	112	48.2
1993	2,799	49.7	1,391	45.9	1,408	53.4	175	35.4	2,521	50.6	103	51.5
1994	2,850	50.7	1,470	44.6	1,380	54.6	144	36.1	2,604	50.7	102	34.3
1995	3,427	52.4	1,639	46.3	1,788	58.1	153	44.4	3,141	52.6	133	58.6
1996	3,637	51.8	1,795	45.7	1,842	57.8	192	39.1	3,305	52.4	140	55.0
1997	3,823	53.1	1,882	47.0	1,941	59.1	243	47.7	3,408	53.8	172	47.1
1998	3,747	53.3	1,491	46.0	1,956	60.0	273	45.4	3,336	54.0	138	52.2
1999	4,099	52.1	1,931	45.9	2,168	57.7	328	47.9	3,607	52.5	167	52.4
2000	3,794	54.8	1,840	49.9	1,954	59.4	268	50.4	3,364	54.8	162	61.1
2001	3,896	53.1	1,913	46.1	1,983	59.8	290	43.1	3,403	54.3	203	46.8

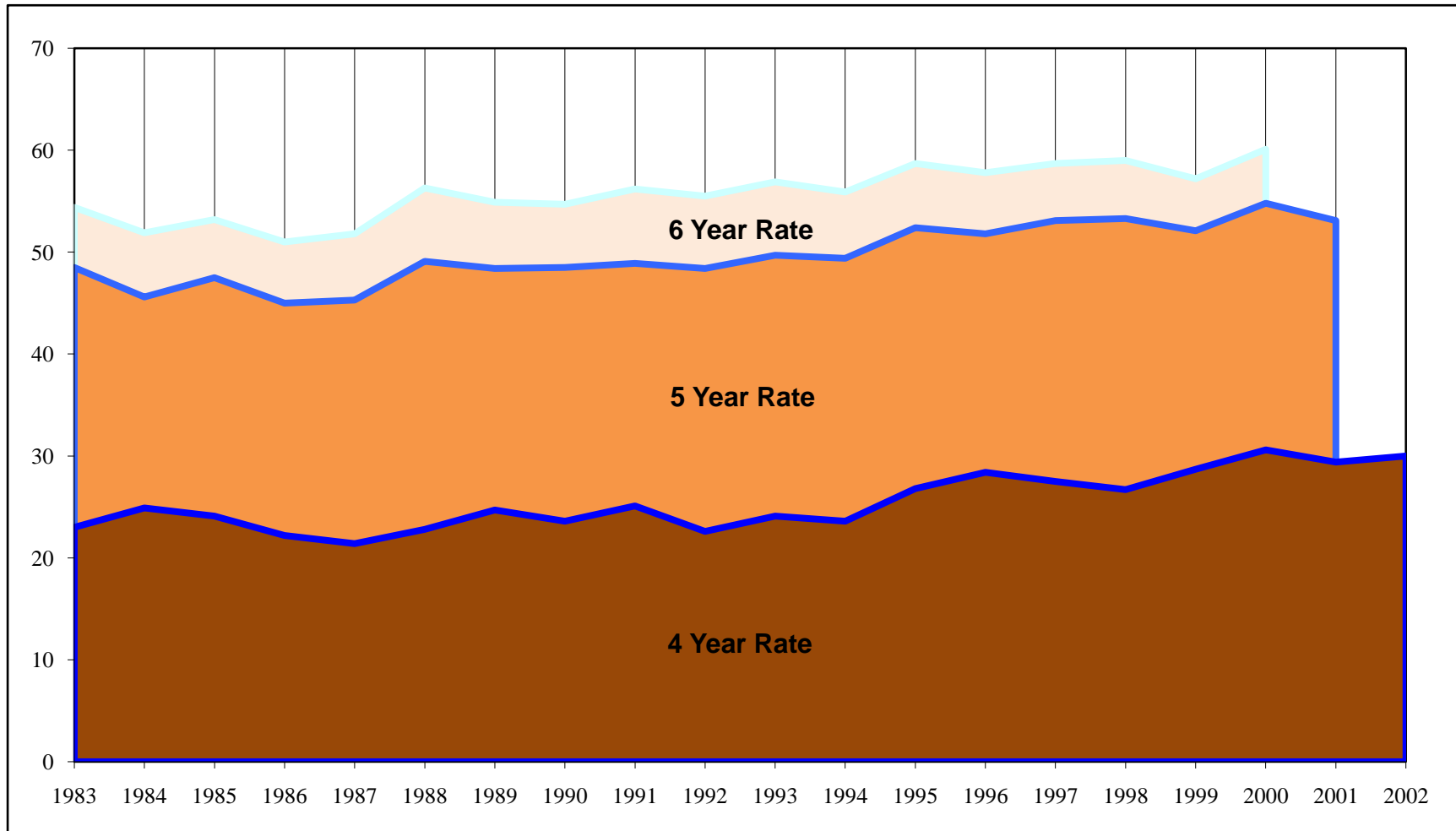
Source: Student Information System and Academic Inventory

**Six Year Graduation Rates
First-Time Full-Time Freshmen
Fall Terms 1983-2000**

Enrollment Year	Total		Men		Women		Black		White		Other	
	Number	Rate	Number	Rate	Number	Rate	Number	Rate	Number	Rate	Number	Rate
1983	3,150	54.4	1,631	54.0	1,519	55.0	184	43.5	2,874	55.2	92	52.2
1984	3,195	51.9	1,607	50.0	1,588	53.9	175	40.0	2,941	52.5	79	57.0
1985	3,299	53.2	1,694	52.0	1,605	54.5	191	36.1	3,055	54.2	53	56.6
1986	3,503	51.0	1,811	48.8	1,692	53.3	205	42.0	3,246	51.7	52	42.3
1987	3,683	51.8	1,886	49.2	1,797	54.6	181	42.5	3,437	52.1	65	63.1
1988	3,708	56.3	1,959	52.8	1,749	60.2	192	46.4	3,462	56.9	54	51.9
1989	3,296	54.9	1,696	53.1	1,600	56.8	185	42.7	3,045	55.5	66	62.1
1990	3,336	54.7	1,706	52.2	1,630	57.3	239	41.4	3,006	55.7	91	58.2
1991	2,986	56.2	1,540	51.7	1,446	60.9	217	46.5	2,668	56.9	101	58.4
1992	3,136	55.5	1,584	54.2	1,552	56.9	209	44.0	2,815	56.5	112	53.6
1993	2,799	56.9	1,391	54.9	1,408	58.9	175	45.1	2,521	57.4	103	64.1
1994	2,850	55.2	1,470	52.1	1,380	58.4	144	43.0	2,604	56.2	102	46.6
1995	3,427	58.7	1,639	54.1	1,788	63.0	153	52.9	3,141	58.8	133	62.4
1996	3,637	57.8	1,795	53.3	1,842	62.3	192	46.3	3,305	58.4	140	55.4
1997	3,823	58.7	1,882	54.1	1,941	63.2	243	53.9	2,408	59.2	172	57.0
1998	3,747	59.0	1,491	53.1	1,956	64.3	273	53.5	3,336	59.4	138	58.7
1999	4,099	57.2	1,931	52.4	2,168	61.4	328	54.0	3,607	57.5	164	57.3
2000	3,794	60.1	1,840	56.8	1,954	63.2	268	58.2	3,364	59.9	162	66.7

Source: Student Information System and Academic Inventory

**Graduation Rates
First-Time Full-Time Freshmen
Fall Terms 1983-2002**



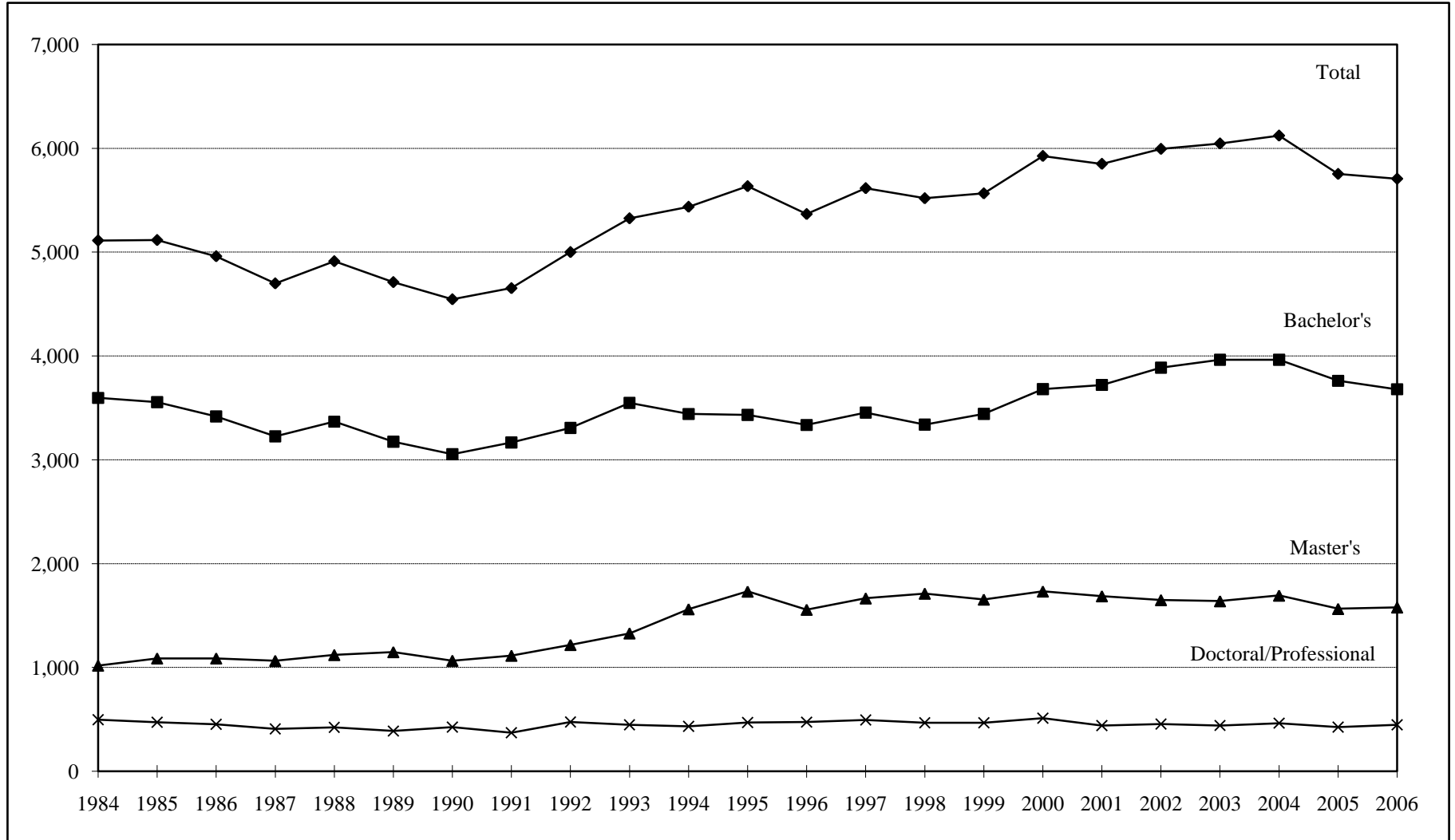
Source: Student Information System and Academic Inventory

**Summary of Degrees Conferred
By Discipline
FY 2002-2006**

	BACHELOR'S					MASTER'S					DOCTORAL/PROFESSIONAL				
	01-02	02-03	03-04	04-05	05-06	01-02	02-03	03-04	04-05	05-06	01-02	02-03	03-04	04-05	05-06
DEGREES AWARDED	3,888	3,965	3,965	3,762	3,680	1,650	1,639	1,693	1,565	1,579	456	442	464	426	448
DOCTORAL											240	216	248	228	236
PROFESSIONAL											216	226	216	198	212
COLLEGE/SCHOOL															
Agricultural Sciences & Natural Resources	226	225	188	192	169	63	55	58	66	53	11	3	11	14	10
Architecture & Design	56	77	74	51	59	5	15	6	11	8	0	0	0	0	0
Arts & Sciences	1,558	1,551	1,618	1,633	1,618	273	250	253	218	248	92	85	108	80	105
Business Administration	764	825	761	730	716	263	277	288	287	251	8	9	13	13	11
Communication & Information	355	397	379	355	377	78	94	89	98	86	8	8	5	3	5
Education, Health & Human Sciences	491	465	483	376	327	597	567	578	479	499	86	73	63	63	52
Engineering	284	280	312	286	270	127	121	147	150	160	19	28	31	36	38
Intercollegiate Programs	0	0	0	0	0	17	22	23	21	22	8	3	9	12	5
Law	0	0	0	0	0	0	0	0	0	0	154	161	151	136	147
Nursing	120	110	123	117	118	40	37	44	39	57	5	1	3	3	5
Social Work	30	35	27	22	26	187	201	207	196	195	3	6	5	4	5
Veterinary Medicine	0	0	0	0	0	0	0	0	0	0	62	65	65	62	65

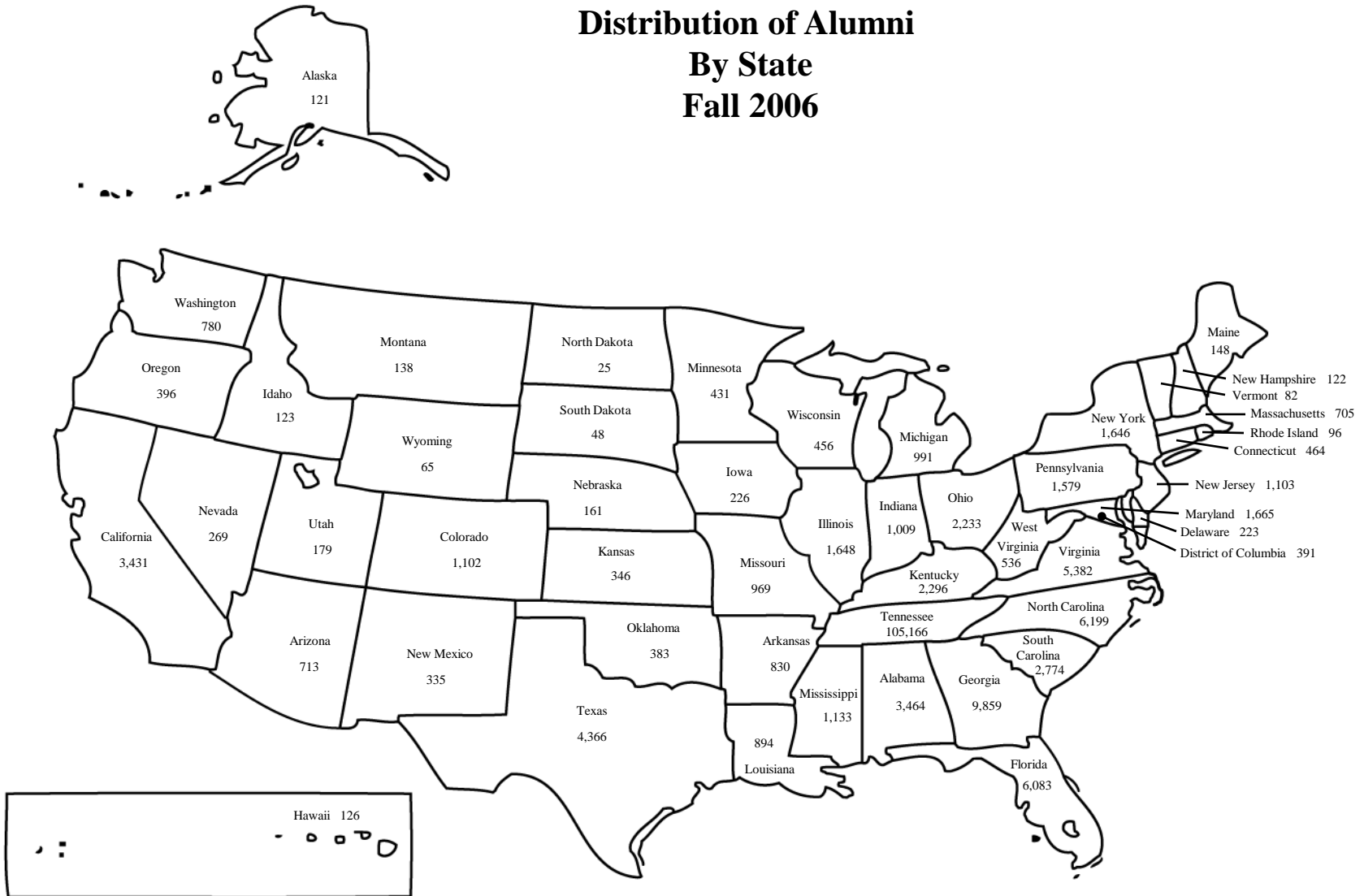
Source: Academic Inventory

**Summary of Degrees Conferred
By Level
FY 1984-2006**



Source: Academic Inventory

Distribution of Alumni By State Fall 2006



Source: Student Information System

Note: UTK (excludes UTSI and Veterinary Medicine)

Degrees Awarded by Major FY 1996-2006

Major	Degree Awarded	1996-97	1997-98	1998-99	1999-00	2000-01	2001-02	2002-03	2003-04	2004-05	2005-06
Accounting	Bachelor's	112	102	99	129	184	144	167	163	138	138
	Master's	74	66	80	76	74	82	81	80	78	63
Advertising	Bachelor's	56	48	52	82	83	97	108	88	76	88
Aerospace Engineering	Bachelor's	10	6	3	10	11	9	11	19	24	21
	Master's	9	3	7	2	4	4	6	6	3	5
	PhD	3	2	0	1	1	1	3	0	1	
Agricultural & Extension Education	Bachelor's	10	9	7	15	9	11	10	6	6	12
	Master's	7	9	7	10	11	11	3	9	10	6
Agricultural Economics & Business	Bachelor's	21	14	20	16	22	15	13	26	22	14
	Master's	8	10	3	4	12	6	8	5	11	10
	PhD	3	3	3	0	0	0	0	0	0	
Agricultural Mechanization	Bachelor's	0	0	1	0	0	0	0	0	0	
Animal Science	Bachelor's	50	46	40	35	61	56	56	49	47	53
	Master's	10	5	4	8	7	6	4	5	2	2
	PhD	2	1	4	2	0	6	1	6	0	
Anthropology	Bachelor's	37	47	38	54	38	45	55	49	57	65
	Master's	16	9	13	8	7	11	10	7	7	9
	PhD	2	8	6	7	6	6	2	5	6	6
Architecture	Bachelor's	45	37	47	49	67	40	56	56	30	48
	Master's	1	5	5	10	16	5	15	6	11	8
Area, Ethnic & Cultural Studies	Bachelor's	40	47	36	63	35	59	57	52	68	44
Art History	Bachelor's	8	4	9	11	8	13	11	13	5	4
Art Education	Master's	1	0	0	0	0	0	0	0	0	
Audiology	Bachelor's	4	4	9	8	11	10	4	5	9	7
	Master's	11	9	14	14	16	15	11	3	0	20
	PhD								4	14	4

continued

Degrees Awarded by Major FY 1996-2006

Major	Degree Awarded	1996-97	1997-98	1998-99	1999-00	2000-01	2001-02	2002-03	2003-04	2004-05	2005-06
Aviation Systems	Master's									19	20
Biochemistry & Cellular & Molecular Biology	Bachelor's	15	16	16	9	1	0	1	0	0	
	Master's	2	4	0	0	5	6	2	4	3	1
	PhD	3	5	2	4	3	5	3	4	2	6
Biological Sciences	Master's	13	13	8	1	0	2	2	3	0	3
	PhD	7	10	8	1	3	4	1	2	4	3
Biology	Bachelor's	118	121	145	137	129	107	119	151	126	138
Biosystems Engineering	Bachelor's	8	11	6	5	7	6	7	3	11	3
	Master's	3	0	2	1	5	3	1	4	2	4
	PhD	1	2	2	1	1	1	0	2	1	3
Biosystems Engineering Technology	Master's	6	7	4	5	0	6	3	5	0	
Botany	Bachelor's	9	5	4	3	2	0	0	0	0	
	Master's	7	2	3	2	4	0	3	1	1	2
	PhD	2	2	0	2	1	4	3	3	2	
Business Administration	Bachelor's	55	60	78	89	90	95	107	81	83	82
	Master's	92	109	138	169	182	164	177	177	190	169
	PhD	9	11	5	8	9	5	5	10	6	9
Business/Marketing Education	Bachelor's	23	29	16	9	3	0	0	0	0	
Chemical Engineering	Bachelor's	57	37	27	36	42	27	28	24	19	16
	Master's	15	3	9	8	10	4	8	5	5	6
	PhD	10	3	3	7	0	3	3	5	1	5
Chemistry	Bachelor's	13	11	14	11	13	16	18	22	11	16
	Master's	7	10	7	7	5	3	5	3	2	3
	PhD	14	6	14	21	9	10	12	12	9	14
Child Development	Bachelor's	56	41	44	48	49	73	88	78	75	59
	Master's	13	23	11	33	23	30	32	31	20	31
Civil Engineering	Bachelor's	63	65	73	61	61	48	68	46	46	60
	Master's	30	18	20	40	28	22	20	22	29	27
	PhD	7	2	3	4	3	1	3	7	6	8

continued

**Degrees Awarded by Major
FY 1996-2006**

Major	Degree Awarded	1996-97	1997-98	1998-99	1999-00	2000-01	2001-02	2002-03	2003-04	2004-05	2005-06
Classics	Bachelor's	2	2	5	6	7	7	2	6	16	10
College Student Personnel	Master's	7	16	13	13	11	16	8	17	8	13
Communications	Bachelor's									7	49
	Master's	18	31	39	25	27	26	35	29	18	15
	PhD	7	6	6	9	5	8	8	5	3	5
Comparative & Experimental Medicine	Master's	0	3	2	2	1	3	2	1	2	2
	PhD	3	6	6	5	4	5	3	4	9	2
Computer Engineering	Bachelor's	0	0	0	0	0	13	20	25	19	18
	Master's										1
Computer Science	Bachelor's	20	29	25	22	35	45	45	40	30	21
	Master's	21	23	32	28	23	27	30	29	26	17
	PhD	4	5	3	3	2	1	2	3	0	3
Curriculum & Instruction	Master's	309	195	9	2	0	0	0	0	0	16
	PhD	12	3	0	0	0	0	0	0	0	2
Ecology & Evolutionary Biology	Bachelor's	0	0	0	0	1	1	0	0	0	
	Master's	9	8	2	0	7	4	4	7	1	2
	PhD	3	3	3	2	8	3	6	4	2	3
Economics (CAS)	Bachelor's	55	60	57	55	77	92	83	100	63	59
Economics (CBA)	Bachelor's	3	7	10	9	11	8	9	4	10	9
	Master's	5	7	2	3	7	3	3	11	2	5
	PhD	4	4	5	6	7	3	3	3	5	1
Education Administration & Policy Studies	Master's	20	10	9	15	10	14	7	10	7	5
	PhD	16	7	7	9	7	2	2	7	9	10
Education	Master's	0	130	343	360	367	314	344	355	300	258
	PhD	38	37	28	55	42	54	48	43	35	28
Educational Psychology	Master's	32	33	42	29	36	48	34	43	34	36
	PhD	0	0	0	2	0	3	0	3	4	

continued

Degrees Awarded by Major FY 1996-2006

Major	Degree Awarded	1996-97	1997-98	1998-99	1999-00	2000-01	2001-02	2002-03	2003-04	2004-05	2005-06
Electrical Engineering	Bachelor's	63	62	52	66	52	50	44	56	40	30
	Master's	23	14	17	19	14	11	26	42	30	44
	PhD	5	3	2	1	7	4	4	4	8	4
Electronic Media	Bachelor's	82	90	90	88	95	86	82	86	78	44
Engineering Physics	Bachelor's	2	1	1	2	3	1	1	3	3	2
Engineering Science	Bachelor's	19	21	15	11	21	23	17	30	34	24
	Master's	12	6	17	5	5	7	4	8	11	11
	PhD	6	6	3	4	4	2	4	1	0	2
English	Bachelor's	139	146	160	166	155	162	147	153	163	134
	Master's	15	22	16	26	12	18	24	22	20	10
	PhD	7	11	14	7	3	8	8	7	2	5
Entomology & Plant Pathology	Master's	4	13	5	9	7	4	8	3	8	3
Environmental Engineering	Master's	34	25	21	16	9	9	13	9	18	6
Exercise Science	Bachelor's	47	47	35	48	54	48	29	38	37	36
	Master's								12	11	5
Family Studies	Bachelor's	17	38	47	61	41	38	34	41	25	23
Finance	Bachelor's	132	116	136	144	146	135	150	137	153	151
Food Science & Technology	Bachelor's	6	5	15	7	6	12	11	11	7	10
	Master's	7	6	9	5	6	6	7	4	11	4
	PhD	5	1	2	4	1	3	0	1	2	1
Forestry	Bachelor's	26	19	29	17	16	21	18	18	14	17
	Master's	3	2	9	5	8	5	3	8	8	6
French	Bachelor's	9	9	12	9	14	12	12	13	18	17
	Master's	4	1	10	4	1	2	5	6	2	3
Geography	Bachelor's	22	19	21	16	16	19	23	26	34	37
	Master's	11	6	3	3	5	6	10	11	6	6
	PhD	2	3	2	2	3	2	2	3	2	3

continued

Degrees Awarded by Major FY 1996-2006

Major	Degree Awarded	1996-97	1997-98	1998-99	1999-00	2000-01	2001-02	2002-03	2003-04	2004-05	2005-06
Geology	Bachelor's	15	11	4	9	10	11	12	10	3	19
	Master's	8	6	8	7	8	10	5	6	5	12
	PhD	4	3	1	2	2	4	3	1	0	6
German	Bachelor's	10	9	9	9	10	7	4	6	13	5
	Master's	3	3	2	3	3	5	3	1	3	1
Graphic Design	Bachelor's	23	25	21	27	31	23	8	24	14	12
Health Education	Bachelor's	13	15	9	12	11	6	7	10	5	10
	Master's	11	9	5	7	4	7	1	1	2	1
	PhD	2	4	1	0	1	1	0	0	0	
History	Bachelor's	71	93	82	87	96	84	78	98	93	78
	Master's	9	11	12	3	3	9	4	10	13	10
	PhD	7	3	7	1	1	4	5	2	2	4
Hotel & Restaurant Management	Bachelor's	33	45	37	38	29	41	26	28	19	25
	Master's	8	0	2	0	0	0	0	0	0	
Human Ecology Education	Bachelor's	4	1	0	0	0	0	0	0	0	
Human Ecology	Master's	3	5	5	1	1	0	0	0	0	
	PhD	26	22	16	17	20	26	23	10	15	12
Human Performance & Sports Studies	Bachelor's	5	2	2	1	0	0	0	0	0	1
	Master's	54	57	71	81	71	78	49	47	40	54
Human Resource Development	Bachelor's	60	29	43	57	39	50	56	52	27	24
	Master's	44	44	33	36	27	24	32	23	3	3
Human Services	Bachelor's	26	20	27	26	18	21	23	29	10	4
Industrial & Organizational Psychology	Master's	0	0	0	0	0	0	0	0	0	
	PhD	11	1	3	4	5	3	0	5	3	3
Industrial Education	Bachelor's	0	0	0	0	10	3	0	1	0	
Industrial Engineering	Bachelor's	30	38	33	34	36	37	24	26	29	21
	Master's	35	32	23	40	44	30	20	16	19	10
	PhD										6

continued

Degrees Awarded by Major FY 1996-2006

Major	Degree Awarded	1996-97	1997-98	1998-99	1999-00	2000-01	2001-02	2002-03	2003-04	2004-05	2005-06
Information Sciences	Master's	46	50	35	42	78	52	59	60	80	71
Interior Design	Bachelor's	13	16	18	16	21	16	21	18	21	11
	Master's	0	4	3	0	0	0	0	0	0	
Italian	Bachelor's	1	1	1	0	2	4	2	1	0	4
Journalism	Bachelor's	69	66	94	94	109	139	168	157	135	151
Law	JD	134	149	155	164	144	154	161	151	136	147
Logistics & Transportation	Bachelor's	110	103	132	130	152	135	174	115	111	106
Management Science	Master's	7	4	4	2	4	2	5	6	7	5
	PhD	4	1	3	2	2	0	1	0	2	1
Marketing	Bachelor's	81	78	108	124	145	135	152	149	150	155
Materials Science & Engineering	Bachelor's	7	8	6	2	6	8	6	3	5	7
	Master's						6	5	7	8	13
	PhD						0	2	8	11	8
Mathematics	Bachelor's	26	19	25	15	18	15	15	20	19	24
	Master's	21	15	16	19	12	14	9	13	11	19
	PhD	7	4	4	7	6	3	2	4	2	4
Mechanical Engineering	Bachelor's	70	79	59	76	62	58	50	67	57	49
	Master's	20	9	16	11	16	16	10	17	18	15
	PhD	0	5	4	6	6	4	2	1	3	2
Medical Technology	Bachelor's	11	5	5	5	5	8	5	7	4	6
Metallurgical Engineering	Master's	6	2	7	5	6	4	0	0	0	
	PhD	4	5	4	3	1	2	1	0	0	
Microbiology	Bachelor's	15	15	14	19	13	3	0	0	0	
	Master's	1	3	4	3	5	3	2	2	4	2
	PhD	5	8	1	4	6	1	1	5	2	4

continued

Degrees Awarded by Major FY 1996-2006

Major	Degree Awarded	1996-97	1997-98	1998-99	1999-00	2000-01	2001-02	2002-03	2003-04	2004-05	2005-06
Modern Foreign Languages	PhD	2	2	1	3	2	2	4	5	1	3
Multi/Interdisciplinary Studies	Bachelor's	121	117	89	67	44	64	36	39	37	36
	Master's	11	17	12	16	22	14	20	22	0	
Music Education	Bachelor's	0	0	0	0	0	0	0	0	0	
Music	Bachelor's	20	27	25	21	30	36	36	37	22	30
	Master's	20	28	14	25	15	26	24	27	33	30
Natural Resources	PhD									7	3
Nuclear Engineering	Bachelor's	12	11	7	6	0	10	11	13	10	22
	Master's	8	12	9	11	4	9	7	13	6	20
	PhD	5	6	7	3	6	2	5	4	4	
Nursing	Bachelor's	101	104	91	125	112	120	110	123	117	118
	Master's	48	42	51	43	36	40	37	44	39	57
	PhD	1	2	7	5	3	5	1	3	3	5
Nutrition	Bachelor's	22	8	10	12	16	15	11	8	19	13
	Master's	11	9	12	5	16	14	9	4	10	11
Ornamental Horticulture	Bachelor's	45	42	44	65	65	56	40	14	3	1
	Master's	3	5	6	2	6	2	1	3	0	
Philosophy	Bachelor's	8	8	10	15	7	20	13	17	16	27
	Master's	8	4	3	6	6	9	5	3	4	10
	PhD	1	4	7	2	3	4	4	3	2	
Physics	Bachelor's	4	4	2	3	3	7	4	3	7	11
	Master's	7	7	6	3	1	6	9	4	9	6
	PhD	8	8	4	10	13	7	7	7	4	10
Planning	Master's	11	35	16	23	21	16	20	15	4	3
Plant Science	Bachelor's	43	42	33	16	12	17	46	50	57	41
	Master's	12	6	5	7	7	7	7	2	7	12
	PhD	3	0	6	5	3	1	2	2	4	3

continued

Degrees Awarded by Major FY 1996-2006

Major	Degree Awarded	1996-97	1997-98	1998-99	1999-00	2000-01	2001-02	2002-03	2003-04	2004-05	2005-06
Political Science	Bachelor's	111	102	102	93	97	142	157	151	160	200
	Master's	6	4	8	5	2	7	4	4	7	10
	PhD	6	9	7	7	1	7	4	1	6	4
Polymer Engineering	Master's	1	2	2	2	8	5	2	2	3	2
	PhD	1	0	3	3	3	0	1	1	2	3
Psychology	Bachelor's	293	265	268	286	299	358	392	388	408	410
	Master's	13	10	5	4	8	10	4	7	5	5
	PhD	14	6	20	16	17	11	12	23	16	20
Public Administration	Bachelor's	7	6	2	2	4	8	5	4	5	9
	Master's	6	10	10	5	6	12	5	14	8	8
Public Health	Bachelor's	1	0	0	0	0	0	0	0	0	
	Master's	15	23	23	24	17	28	24	16	22	34
Public Relations	BA										3
Recreation & Tourism Management	Bachelor's	33	28	29	38	50	43	40	32	23	21
	Master's	11	16	10	13	8	15	11	11	12	15
Rehabilitation Counseling	Master's	16	15	9	2	0	0	0	0	0	
Religious Studies	Bachelor's	10	12	11	13	7	8	14	11	10	10
Retail & Consumer Sciences	Bachelor's	62	65	66	56	63	57	54	64	50	34
	Master's	0	3	6	4	5	7	5	2	2	5
Russian	Bachelor's	1	4	3	1	5	1	1	5	3	
Safety Education & Service	Master's	8	10	13	12	0	2	11	6	8	12
Social Work	Bachelor's	34	24	31	40	18	30	35	27	22	26
	Master's	179	170	130	210	170	187	201	207	196	195
	PhD	1	6	5	2	3	3	6	5	4	5
Sociology	Bachelor's	75	91	106	100	100	123	98	112	134	118
	Master's	5	11	10	4	2	4	4	2	4	7
	PhD	4	2	3	4	6	3	4	7	1	2

continued

**Degrees Awarded by Major
FY 1996-2006**

Major	Degree Awarded	1996-97	1997-98	1998-99	1999-00	2000-01	2001-02	2002-03	2003-04	2004-05	2005-06
Spanish	Bachelor's	18	16	25	38	29	39	45	53	45	38
	Master's	3	5	5	7	4	5	3	8	6	12
Special Education	Bachelor's	40	28	23	36	26	28	35	22	23	22
	Master's	44	47	15	2	2	0	0	0	0	
Speech Communications	Bachelor's	45	46	53	54	43	33	39	48	59	42
Speech Pathology	Bachelor's	37	36	42	42	29	37	36	21	26	25
	Master's	47	72	64	56	38	34	25	15	23	18
Speech Pathology & Hearing Science	PhD	1	2	2	3	0	3	0	3	1	1
Sports Management	Bachelor's	22	32	44	59	50	68	62	80	63	55
Statistics	Bachelor's	7	3	7	6	15	16	10	8	17	7
	Master's	8	12	7	9	13	12	11	14	10	9
Studio Art	Bachelor's	40	40	30	41	49	52	47	66	63	55
	Master's	13	9	7	8	13	6	14	16	6	10
Theatre	Bachelor's	19	14	19	17	24	20	22	19	19	17
	Master's	8	6	3	11	3	3	4	10	5	9
Veterinary Medicine	DVM	66	64	58	62	58	62	65	65	62	65
Wildlife & Fisheries Science	Bachelor's	46	30	37	31	26	32	24	11	25	18
	Master's	7	6	6	6	7	7	10	10	7	6
Zoology	Bachelor's	31	26	11	10	0	0	0	0	0	
	Master's	2	6	7	1	0	0	0	0	0	
	PhD	3	1	8	10	0	0	0	0	0	

continued

**Degrees Awarded by Major
FY 1996-2006**

Major	Degree Awarded	1996-97	1997-98	1998-99	1999-00	2000-01	2001-02	2002-03	2003-04	2004-05	2005-06
TOTALS											
	Bachelor's	3,455	3,340	3,443	3,681	3,722	3,888	3,965	3,965	3,762	3,680
	Master's	1,666	1,712	1,655	1,753	1,687	1,650	1,639	1,693	1,565	1,579
	PhD	295	254	255	286	239	240	216	248	228	236
	Professional	200	213	213	226	202	216	226	216	198	212
	All Degrees	5,616	5,519	5,566	5,946	5,850	5,994	6,046	6,122	5,753	5,707

UT Knoxville
Research and Sponsored Programs
FY 2005

College/Department	Amount	Number	College/Department	Amount	Number
College of Agricultural Sciences & Nat. Resources	\$163,235	2	College of Communication & Information-Continued		
Animal Science	\$163,235	2	Counseling, Deafness & Human Services	\$0	1
College of Architecture & Design	\$20,513	2	Education, Health, & Human Sciences	\$917,332	9
Architecture	\$20,513	2	Educational Administration & Policy Studies	\$644,273	2
College of Arts & Sciences	\$44,146,026	381	Educational Psychology & Counseling	\$166,289	3
Anthropology	\$3,668,557	38	Health & Exercise Science	\$242,701	6
Audiology & Speech Pathology	\$637,819	7	Institute for Assessment & Evaluation	\$93,913	4
Biochemistry, Cellular & Molecular Biology	\$4,406,327	20	Instructional Technology, Health, & Educational Studies	\$0	1
Biology	\$95,684	1	Nutrition	\$1,031,625	7
Botany	\$162,500	5	Sport & Leisure Studies	\$10,800	1
Center for Information Technology Research	\$2,870,776	14	Theory & Practice in Teacher Education	\$1,795,272	15
Chemistry	\$3,403,428	39	College of Engineering	\$24,366,860	247
Classics	\$39,000	3	Administration	\$314,768	8
Computer Science	\$2,796,608	24	Chemical Engineering	\$1,295,252	13
Earth & Planetary Sciences	\$1,717,278	27	Civil & Environmental Engineering	\$514,316	21
Ecology & Evolutionary Biology	\$5,505,955	33	Electrical & Computer Engineering	\$5,901,788	46
Geography	\$79,592	9	Industrial & Information Engineering	\$518,042	12
History	\$313,317	5	Maintenance & Reliability Center	\$10,000	1
Mathematics	\$1,936,870	17	Materials Processing Center	\$1,720,114	15
Microbiology	\$1,445,157	11	Materials Science & Engineering	\$8,247,396	70
Modern Foreign Languages & Literatures	\$25,000	1	Mechanical, Aerospace & Biomedical Engineering	\$3,590,255	33
Physics & Astronomy	\$9,402,362	57	Nuclear Engineering	\$2,254,929	28
Political Science	\$15,000	1	College of Nursing	\$1,241,219	5
Psychology	\$201,534	6	Nursing	\$1,241,219	5
Religious Studies	\$20,000	1	College of Social Work	\$14,994,328	45
School of Art	\$50,000	2	Children's Mental Health Services Research Center	\$1,299,336	5
School of Genome Science & Technology	\$3,127,336	38	Social Work	\$606,656	12
Science Alliance	\$1,826,029	15	Social Work Research & Public Service	\$13,088,336	28
Social Science Research Institute	\$282,276	6	Interdisciplinary Research Centers	\$15,461,359	178
Sociology	\$117,621	1	Center for Biomarker Analysis	\$228,183	10
College of Business Administration	\$7,906,555	37	Center for Environmental Biotechnology	\$2,015,220	21
Business Administration	\$125,000	1	Center for Transportation Research	\$9,733,084	76
Center for Business & Economic Research	\$2,126,742	23	Community Partnership Center	\$35,556	3
Construction Resources Analysis	\$508,000	2	Energy, Environment, & Resources Center	\$961,838	31
Economics	\$253,377	5	Joint Institute for Energy & Environment	\$1,685,483	30
Executive Development Programs	\$4,768,560	1	Melt-Blown Services	\$750,000	3
Human Resource Development	\$32,077	1	Water Resources Research Center	\$51,995	4
Management	\$40,000	1	General Administration	\$1,899,071	42
MBA Program	\$50,000	1	Career Services	\$25,000	1
Statistics	\$2,799	2	Graduate School	\$317,500	1
College of Communication & Information	\$1,636,567	12	Infrastructure	\$90,743	1
School of Information Sciences	\$1,636,567	12	McClung Museum	\$1,000	1
College of Education, Health & Human Sciences	\$18,774,729	86	Office of Disability Services	\$476,474	6
Bureau of Evaluation Research & Service	\$8,572,979	22	Vice President, Research & Information Technologies	\$988,354	32
Center on Deafness	\$1,369,555	5	Libraries	\$566,775	3
Child & Family Studies	\$3,739,990	7	Libraries	\$566,775	3
Consumer & Industry Services Management	\$190,000	3			
			UT Knoxville TOTAL FY 2005	\$131,177,237	1,040

Source: Research & Sponsored Programs (FY2006 not published as of March 6, 2007)

UT Knoxville
Research and Sponsored Programs
FY 2005

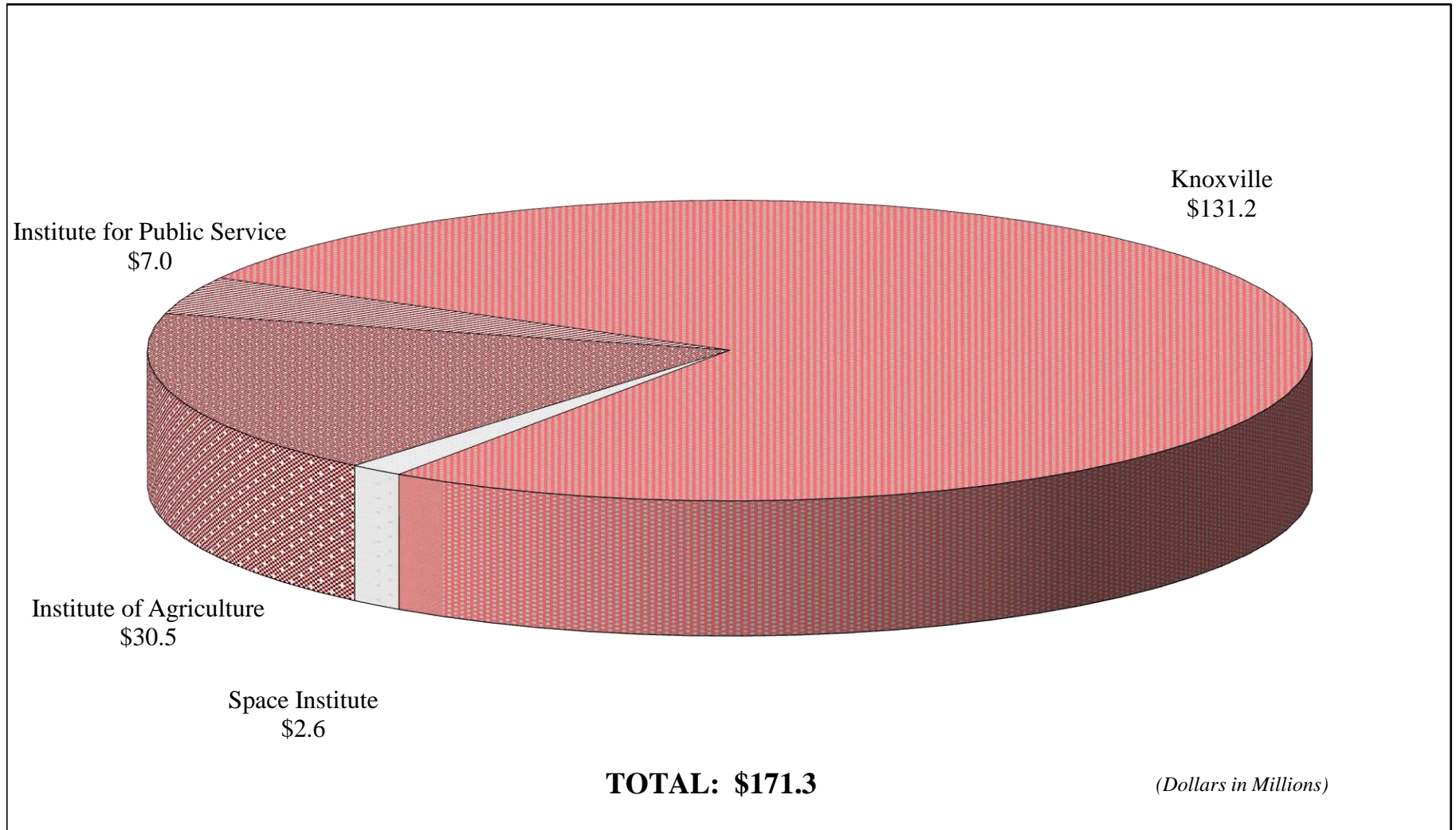
UT Space Insitute	Amount	Number
TOTALS	2,592,768	33
Applied Fluid Dynamics Research Group	168,296	3
Computational Information Processing Group	478,500	7
Computational Mechanics Research Group	152,123	3
Energy, Environment & Industrial Research Group	55,000	3
Flight Systems Resarch Group	109,335	2
Space Institute Research Administration	528,114	2
UT Ctr for Laser Applications	1,101,400	13

Institute for Public Service	Amount	Number
TOTALS	6,971,900	26
Center for Industrial Services	2,219,900	13
Institute for Public Service (WUOT)	75,000	1
Law Enforcement Innovation Center	1,170,638	5
Municipal Technical Advisory Services	73,370	4
Program Development & Support	3,432,992	3

Source: Research & Sponsored Programs
(FY2006 not published as of March 6, 2007)

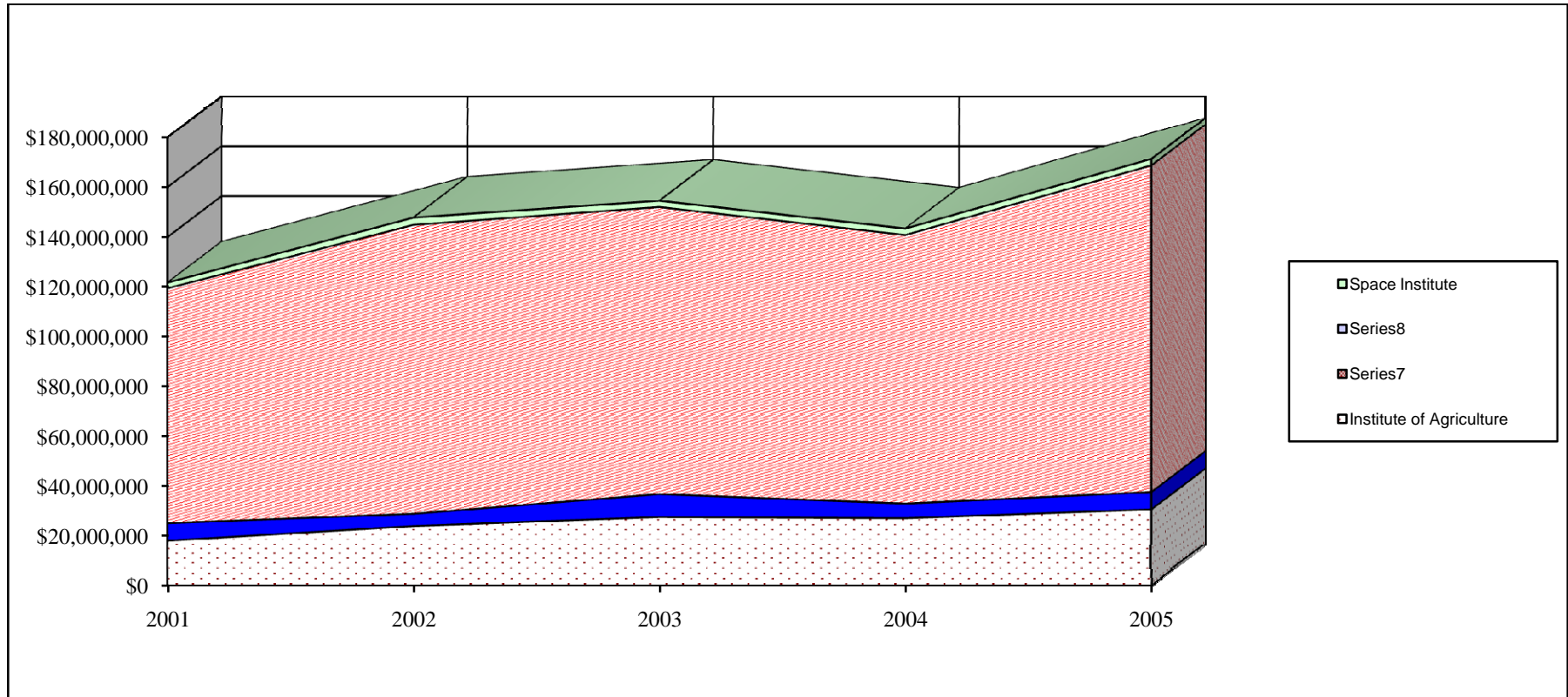
Institute for Agriculture	Amount	Number
TOTALS	30,521,334	448
<i>Agricultural Experiment Station</i>	10,862,430	186
Administration	409,412	3
Agricultural Economics	512,822	20
Animal Science	1,116,339	5
Biosystems Engin. & Envir. Sciences	1,166,763	19
Entomology & Plant Pathology	1,505,863	18
Experiment Stations	312,523	10
Food Science & Technology	251,596	6
Forestry, Wildlife & Fisheries	3,040,945	60
International Programs	7,500	1
Plant & Soil Science	1,912,372	39
UT Food Safety Center of Excellence	626,295	5
<i>Agricultural Extension Service</i>	13,921,193	219
Administration	130,000	1
Agricultural Economics	208,361	8
Biosystems Engin. & Envir. Sciences	356,911	7
Center for Profitable Agriculture	214,931	7
District Offices	6,720,516	112
Entomology & Plant Pathology	877,767	33
Family & Consumer Science	4,385,285	19
Food Science & Technology	152,426	1
Forestry, Wildlife & Fisheries	567,858	15
Four-H Club	75,000	2
Plant Sciences	232,138	14
<i>College of Veterinary Medicine</i>	5,737,711	43
Comparative Medicine	134,550	4
Large Animal Clinical Sciences	106,554	5
Pathology	3,865,813	16
Small Animal Clinical Sciences	501,449	10
Veterinary Hospital	140,780	7
Veterinary Medicine	988,565	1

**UT Knoxville
Research and Sponsored Programs
FY 2005**



SOURCE: Office of Research Annual Report (FY2006 not published as of March 6, 2007)

UT Knoxville Research and Sponsored Programs FY 2001-2005



	2001	2002	2003	2004	2005
Institute of Agriculture	\$17,952,771	\$23,844,523	\$27,469,632	\$26,978,435	\$30,521,334
Institute for Public Service	\$7,020,252	\$4,917,173	\$9,189,000	\$5,882,079	\$6,971,900
Knoxville	\$94,511,592	\$116,122,143	\$115,343,071	\$107,973,307	\$131,177,237
Space Institute	\$2,245,125	\$2,869,867	\$2,504,407	\$2,552,297	\$2,592,768
TOTAL	\$182,531,959	\$147,753,706	\$154,506,110	\$143,386,118	\$171,263,239

Source: Office of Research Annual Report (FY2006 not published as of March 6, 2007)