

# PREFACE

I welcome you to the **2004-2005** edition of the **University of Tennessee Fact Book**. The UT e-Fact Book is presented in Adobe PDF format. It is best navigated using the **Contents** within the Bookmark pane as found in **Adobe Reader 7.0.1 or higher**. Use the links at the left on this page to begin navigation.

The reader is reminded that Fact Book data reflect the reorganization of the University of Tennessee. Most of the tables include figures for the programs in Knoxville, Memphis, and Tullahoma, as well as the Institute for Public Service and the Institute of Agriculture. If you need information not found in the Fact Book, please contact the Office of Institutional Research and Assessment.

This project is supported by the cooperation of dozens of people across the University of Tennessee and I am grateful for their help. Within the Office of Institutional Research and Assessment, Elizabeth Pemberton is Fact Book editor, and Mozghan Shahidi oversees the technical and production aspects of this project. Their tireless work is greatly appreciated.

As always, I solicit your comments and suggestions regarding the Fact Book. Please contact me at [dscroggs@tennessee.edu](mailto:dscroggs@tennessee.edu), (865) 974-4373, or at 211 Conference Center, 600 Henley Street. You are welcome to bookmark our website at <http://oira.tennessee.edu>.

Don Scroggins, Director  
Office of Institutional Research and Assessment

E01-0160-002-05

# CONTENTS

## Introduction

Contents .....	i-ii
Preface .....	iii

## Student Data

Headcount Enrollment by Full-Time/Part-Time, Level, Gender, and Race, Fall 2004.....	1
Full-Time Equivalent Enrollment by Full-Time/Part-Time, Level, Gender, and Race, Fall 2004.....	2
Headcount Enrollment by Level, College, Race, and Gender, Fall 2004.....	3
Headcount Enrollment by Age, Level, and Gender, Fall 2004 .....	4
Distribution of Student Credit Hour Loads, Fall 2004 .....	5
Student Credit Hours by Level, College, and Term, FY 1999-2004 .....	6
Top 10 Enrollment Feeders by Tennessee County, State, and Country, Fall 2004 .....	7
Enrollment by County, Fall 2004 .....	8
Enrollment by State, Fall 2004.....	9
Enrollment by Country, Fall 2004.....	10
Headcount Enrollment by Race and Gender, Fall 1988-2004 .....	11
Total Headcount Enrollment by Level, Full-Time and Part-Time, Fall 2000-2004.....	12
First-Time Freshmen Headcount Enrollment by College, Race, and Gender, Fall 2004 .....	13
Applied, Admitted, and Enrolled Freshmen, Fall 1984-2004 .....	14
Average Test Score, High School GPA, and Class Ranking for First-Time Freshmen, Fall 1991-2004 .....	15
Average Equivalent ACT Scores, High School GPA, and Class Ranking for First-Time Freshmen, Fall 1985-2004 .....	16
Undergraduate Transfer Headcount Enrollment by College, Race, and Gender, Fall 2004.....	17
Undergraduate Transfer Headcount Enrollment, Top Ten Feeder Institutions, Fall 2004 .....	18
Applied, Admitted, and Enrolled Undergraduate Transfer Students, Fall 1984-2004 .....	19
Undergraduate Headcount Enrollment by Race and Gender, Fall 1988-2004 .....	20
First-Time Graduate and Professional Headcount Enrollment by College, Race, and Gender, Fall 2004.....	21
Graduate Headcount Enrollment by Race and Gender, Fall 1988-2004 .....	22

## Faculty/Staff Data

Full-Time Instructional Faculty by Appointment Type, Rank, Tenure Status, and College, Fall 2004.....	23
Tenured and Non-Tenured Full-Time Instructional Faculty, Fall 1995-2004, (as Percentages).....	24
Full-Time Instructional Faculty by Gender, Highest Degree Held, and Race, Fall 2004.....	25
Age and Length of Service of Full-Time Instructional Faculty, Fall 1997-2004, (as Percentages) .....	26
Distribution of Employees by EEO Category, Fall 2004 .....	27
Chairs of Excellence as of October 2004 .....	28

## Financial Data

Unrestricted Expenditures and Transfers by Budgetary Function with Percent Distribution of Expenditures, FY 2000-2005.....	29
Unrestricted Current Revenue by Budgetary Function and Revenue Dollars per Full-Time Equivalent Student, FY 2000-2005 ...	30
Number of Contributors and Gifts, FY 1977-2004 .....	31
Average Salaries of Full-Time Instructional Faculty by College and Rank, FY 2004-2005 .....	32
Median Graduate Assistant Stipends, FY 1984-2005.....	33
Student Tuition by Level, Academic Year 2004-2005 .....	34
Need-Based Financial Aid, Academic Year 2004-2005.....	35

## Facilities Data

Number and Percent of Occupancy for Student Residence Halls, and Married/Graduate Student Housing, Fall 2004 .....	36
Main Library Holdings and Expenditures, FY 2000-2004 .....	37
Law Library Holdings and Expenditures, FY 2000-2004 .....	38
Health Sciences Library and Biocommunications Center Holdings and Expenditures, FY 2000-2004 .....	39
Space Institute Library Holdings and Expenditures, FY 2001-2004.....	40
University of Tennessee Facilities and Acreage, Fall 2004 .....	41

## Outcomes Data

One Year Retention Rates, First-Time Full-Time Freshmen, Fall Terms 1983-2003.....	42
Four Year Graduation Rates, First-Time Full-Time Freshmen, Fall Terms 1983-2000 .....	43
Five Year Graduation Rates, First-Time Full-Time Freshmen, Fall Terms 1983-1999 .....	44
Six Year Graduation Rates, First-Time Full-Time Freshmen, Fall Terms 1983-1998.....	45
Graduation Rates, First-Time Full-Time Freshmen, Fall Terms 1983-2000.....	46
Summary of Degrees Conferred by Discipline, FY 2000-2004 .....	47
Summary of Degrees Conferred by Level, FY 1984-2004.....	48
Distribution of Alumni by County, Fall 2004 .....	49
Distribution of Alumni by State, Fall 2004 .....	50
Degrees Awarded by Major, FY 1996-2004 .....	51-61

## Research and Public Service Data

Research Awards by Campus, FY 2002 .....	62
Research Awards by Campus, FY 1998-2002.....	63
Research Awards by Source, FY 2002, (as Percentages).....	64
Institute of Agriculture, Outreach to Veterinary Clients, FY 2004 .....	65
University of Tennessee Extension, Priority Programs, FY 2004.....	66

**Headcount Enrollment**  
**By Full-Time/Part-Time, Level, Gender, and Race**  
**Fall 2004**

	Total	GENDER		RACE (U.S. Residents only)						International
		Men	Women	Am. Indian	Asian	Black	Hispanic	White	Not Reported	
<b>TOTAL ENROLLMENT</b>	<b>27,769</b>	<b>13,343</b>	<b>14,426</b>	<b>112</b>	<b>725</b>	<b>2,137</b>	<b>348</b>	<b>23,092</b>	<b>273</b>	<b>1,082</b>
Full-Time	23,986	11,543	12,443	100	657	1,916	300	19,978	209	826
Part-Time	3,783	1,800	1,983	12	68	221	48	3,114	64	256
<b>TOTAL UNDERGRADUATE</b>	<b>19,639</b>	<b>9,635</b>	<b>10,004</b>	<b>81</b>	<b>500</b>	<b>1,550</b>	<b>263</b>	<b>16,880</b>	<b>149</b>	<b>216</b>
Full-Time	18,053	8,869	9,184	76	471	1,454	235	15,497	119	201
Part-Time	1,586	766	820	5	29	96	28	1,383	30	15
<b>First-Time Freshmen</b>	<b>4,422</b>	<b>2,120</b>	<b>2,302</b>	<b>17</b>	<b>119</b>	<b>441</b>	<b>61</b>	<b>3,741</b>	<b>19</b>	<b>24</b>
Full-Time	4,395	2,106	2,289	17	119	439	61	3,716	19	24
Part-Time	27	14	13	0	0	2	0	25	0	0
<b>Other Freshmen</b>	<b>1,646</b>	<b>882</b>	<b>764</b>	<b>11</b>	<b>42</b>	<b>145</b>	<b>22</b>	<b>1,410</b>	<b>7</b>	<b>9</b>
Full-Time	1,565	845	720	11	42	139	21	1,336	7	9
Part-Time	81	37	44	0	0	6	1	74	0	0
<b>Sophomore</b>	<b>3,845</b>	<b>1,919</b>	<b>1,926</b>	<b>20</b>	<b>104</b>	<b>322</b>	<b>50</b>	<b>3,280</b>	<b>30</b>	<b>39</b>
Full-Time	3,654	1,837	1,817	18	100	308	45	3,118	28	37
Part-Time	191	82	109	2	4	14	5	162	2	2
<b>Junior</b>	<b>3,848</b>	<b>1,818</b>	<b>2,030</b>	<b>14</b>	<b>87</b>	<b>293</b>	<b>54</b>	<b>3,343</b>	<b>28</b>	<b>29</b>
Full-Time	3,601	1,708	1,893	12	81	276	46	3,132	26	28
Part-Time	247	110	137	2	6	17	8	211	2	1
<b>Senior</b>	<b>5,551</b>	<b>2,756</b>	<b>2,795</b>	<b>19</b>	<b>142</b>	<b>341</b>	<b>72</b>	<b>4,850</b>	<b>51</b>	<b>76</b>
Full-Time	4,746	2,339	2,407	18	127	292	62	4,139	39	69
Part-Time	805	417	388	1	15	49	10	711	12	7
<b>Other Undergraduate</b>	<b>327</b>	<b>140</b>	<b>187</b>	<b>0</b>	<b>6</b>	<b>8</b>	<b>4</b>	<b>256</b>	<b>14</b>	<b>39</b>
Full-Time	92	34	58	0	2	0	0	56	0	34
Part-Time	235	106	129	0	4	8	4	200	14	5
<b>TOTAL GRADUATE/PROFESSIONAL</b>	<b>8,130</b>	<b>3,708</b>	<b>4,422</b>	<b>31</b>	<b>225</b>	<b>587</b>	<b>85</b>	<b>6,212</b>	<b>124</b>	<b>866</b>
Full-Time	5,933	2,674	3,259	24	186	462	65	4,481	90	625
Part-Time	2,197	1,034	1,163	7	39	125	20	1,731	34	241

SOURCE: Student Information System

NOTE: Includes Knoxville, Institute of Agriculture, Veterinary Medicine, Space Institute, and Health Science Center

**Full-Time Equivalent Enrollment  
By Full-Time/Part-Time, Level, Gender, and Race  
Fall 2004**

	Total	GENDER		RACE (U.S. Residents Only)						International
		Men	Women	Am. Indian	Asian	Black	Hispanic	White	Not Reported	
<b>TOTAL ENROLLMENT</b>	<b>25,111</b>	<b>12,009</b>	<b>13,102</b>	<b>102</b>	<b>680</b>	<b>1,988</b>	<b>321</b>	<b>20,887</b>	<b>242</b>	<b>892</b>
Full-Time	23,532	11,255	12,277	96	650	1,892	299	19,600	217	780
Part-Time	1,579	754	825	5	29	96	23	1,286	27	112
<b>TOTAL UNDERGRADUATE</b>	<b>18,190</b>	<b>8,925</b>	<b>9,265</b>	<b>74</b>	<b>473</b>	<b>1,455</b>	<b>245</b>	<b>15,614</b>	<b>129</b>	<b>204</b>
Full-Time	17,486	8,575	8,911	72	460	1,413	231	14,997	117	199
Part-Time	704	350	354	2	13	42	14	617	12	5
<b>First-Time Freshmen</b>	<b>4,198</b>	<b>2,016</b>	<b>2,182</b>	<b>16</b>	<b>115</b>	<b>425</b>	<b>58</b>	<b>3,543</b>	<b>18</b>	<b>24</b>
Full-Time	4,181	2,007	2,174	16	115	424	58	3,527	18	24
Part-Time	17	9	8	0	0	1	0	16	0	0
<b>Other Freshmen</b>	<b>1,545</b>	<b>835</b>	<b>709</b>	<b>11</b>	<b>40</b>	<b>138</b>	<b>21</b>	<b>1,320</b>	<b>7</b>	<b>9</b>
Full-Time	1,504	814	689	11	40	135	20	1,282	7	9
Part-Time	41	21	20	0	0	3	1	38	0	0
<b>Sophomore</b>	<b>3,658</b>	<b>1,831</b>	<b>1,827</b>	<b>18</b>	<b>101</b>	<b>310</b>	<b>47</b>	<b>3,115</b>	<b>28</b>	<b>39</b>
Full-Time	3,566	1,789	1,777	17	99	303	44	3,037	27	38
Part-Time	92	42	50	1	2	7	3	78	1	1
<b>Junior</b>	<b>3,646</b>	<b>1,722</b>	<b>1,924</b>	<b>12</b>	<b>81</b>	<b>272</b>	<b>50</b>	<b>3,176</b>	<b>28</b>	<b>28</b>
Full-Time	3,522	1,665	1,857	11	78	263	46	3,070	27	28
Part-Time	124	57	67	1	3	9	4	106	1	0
<b>Senior</b>	<b>4,989</b>	<b>2,457</b>	<b>2,532</b>	<b>17</b>	<b>133</b>	<b>308</b>	<b>68</b>	<b>4,349</b>	<b>44</b>	<b>72</b>
Full-Time	4,629	2,268	2,361	17	126	288	63	4,029	38	70
Part-Time	360	189	171	0	7	20	5	320	6	2
<b>Other Undergraduate</b>	<b>154</b>	<b>64</b>	<b>91</b>	<b>0</b>	<b>3</b>	<b>2</b>	<b>1</b>	<b>111</b>	<b>4</b>	<b>32</b>
Full-Time	84	32	53	0	2	0	0	52	0	30
Part-Time	70	32	38	0	1	2	1	59	4	2
<b>TOTAL GRADUATE/PROFESSIONAL</b>	<b>6,919</b>	<b>3,084</b>	<b>3,835</b>	<b>27</b>	<b>206</b>	<b>533</b>	<b>77</b>	<b>5,272</b>	<b>115</b>	<b>688</b>
Full-Time	6,046	2,680	3,365	24	190	479	68	4,603	100	581
Part-Time	873	404	470	3	16	54	9	669	15	107

SOURCE: Student Information System

NOTES: Due to rounding, totals may not add evenly; includes Knoxville, Institute of Agriculture, Veterinary Medicine, Space Institute, and Health Science Center

# Headcount Enrollment

## By Level, College, Race, and Gender

### Fall 2004

	TOTAL			AMERICAN INDIAN			ASIAN			BLACK			HISPANIC			WHITE			NOT REPORTED		
	TOTAL	MEN	WOMEN	TOTAL	MEN	WOMEN	TOTAL	MEN	WOMEN	TOTAL	MEN	WOMEN	TOTAL	MEN	WOMEN	TOTAL	MEN	WOMEN	TOTAL	MEN	WOMEN
<b>UNIVERSITY TOTAL</b>	<b>27,769</b>	<b>13,343</b>	<b>14,426</b>	<b>113</b>	<b>54</b>	<b>59</b>	<b>1,458</b>	<b>833</b>	<b>625</b>	<b>2,180</b>	<b>836</b>	<b>1,344</b>	<b>387</b>	<b>186</b>	<b>201</b>	<b>23,290</b>	<b>11,263</b>	<b>12,027</b>	<b>341</b>	<b>171</b>	<b>170</b>
<b>UNDERGRADUATE TOTAL</b>	<b>19,639</b>	<b>9,635</b>	<b>10,004</b>	<b>81</b>	<b>41</b>	<b>40</b>	<b>588</b>	<b>315</b>	<b>273</b>	<b>1,568</b>	<b>674</b>	<b>894</b>	<b>274</b>	<b>138</b>	<b>136</b>	<b>16,940</b>	<b>8,374</b>	<b>8,566</b>	<b>188</b>	<b>93</b>	<b>95</b>
<b>GRADUATE/PROFESSIONAL TOTAL</b>	<b>8,130</b>	<b>3,708</b>	<b>4,422</b>	<b>32</b>	<b>13</b>	<b>19</b>	<b>870</b>	<b>518</b>	<b>352</b>	<b>612</b>	<b>162</b>	<b>450</b>	<b>113</b>	<b>48</b>	<b>65</b>	<b>6,350</b>	<b>2,889</b>	<b>3,461</b>	<b>153</b>	<b>78</b>	<b>75</b>
<b>UNDERGRADUATE</b>																					
Agricultural Sciences & Natural Resources	812	431	381	0	0	0	3	1	2	33	9	24	9	2	7	761	416	345	6	3	3
Architecture & Design	417	199	218	4	2	2	8	7	1	17	10	7	8	3	5	378	175	203	2	2	
Arts & Sciences	6,980	3,133	3,847	33	16	17	236	103	133	610	224	386	96	45	51	5,952	2,715	3,237	53	30	23
Business Administration	2,869	1,750	1,119	9	5	4	97	56	41	191	106	85	50	28	22	2,500	1,542	958	22	13	9
Communication & Information	1,375	466	909	5	2	3	18	6	12	113	25	88	19	7	12	1,210	422	788	10	4	6
Education, Health & Human Sciences	1,419	426	993	1	0	1	27	6	21	125	56	69	12	5	7	1,243	356	887	11	3	8
Engineering	1,791	1,482	309	6	5	1	93	78	15	196	134	62	28	25	3	1,457	1,234	223	11	6	5
Health Science Center	134	8	126	2	1	1	5	1	4	22	3	19	2	0	2	103	3	100	0	0	0
Nursing	725	87	638	5	1	4	17	3	14	62	5	57	6	0	6	632	78	554	3	0	3
Social Work	98	9	89	3	1	2	1	0	1	17	1	16	4	0	4	72	7	65	1	0	1
University	3,019	1,644	1,375	13	8	5	83	54	29	182	101	81	40	23	17	2,632	1,426	1,206	69	32	37
<b>GRADUATE/PROFESSIONAL</b>																					
Agricultural Sciences & Natural Resources	210	120	90	0	0	0	23	13	10	7	2	5	3	2	1	172	101	71	5	2	3
Architecture & Design	32	20	12	0	0	0	3	1	2	0	0	0	0	0	0	25	15	10	4	4	0
Arts & Sciences	1,378	723	655	2	1	1	155	91	64	47	18	29	38	17	21	1,102	578	524	34	18	16
Business Administration	536	328	208	4	2	2	84	51	33	24	11	13	7	4	3	401	250	151	16	10	6
Communication & Information	323	81	242	1	0	1	14	2	12	14	5	9	2	0	2	289	74	215	3	0	3
Education, Health & Human Sciences	1,167	359	808	6	2	4	69	17	52	75	18	57	10	1	9	993	319	674	14	2	12
Engineering	747	602	145	3	2	1	249	188	61	33	18	15	9	7	2	444	378	66	9	9	0
Intercollegiate Programs	34	24	10	0	0	0	8	6	2	0	0	0	0	0	0	25	17	8	1	1	0
Law	450	228	222	2	1	1	3	2	1	49	16	33	6	4	2	380	199	181	10	6	4
Health Science Center	2,003	961	1,042	10	5	5	240	138	102	243	57	186	26	10	16	1,450	734	716	34	17	17
Nursing	164	29	135	0	0	0	3	0	3	2	0	2	0	0	0	158	29	129	1	0	1
Social Work	453	55	398	4	0	4	7	1	6	101	13	88	7	1	6	330	38	292	4	2	2
Veterinary Medicine	271	51	220	0	0	0	1	0	1	2	0	2	1	0	1	257	48	209	10	3	7
University	362	127	235	0	0	0	11	8	3	15	4	11	4	2	2	324	109	215	8	4	4

SOURCE: Student Information System

NOTE: Includes Knoxville, Institute of Agriculture, Veterinary Medicine, Space Institute, and Health Science Center

## Headcount Enrollment By Age, Level, and Gender Fall 2004

	TOTAL				UNDERGRADUATE				GRADUATE/PROFESSIONAL			
	TOTAL	MEN	WOMEN	PERCENT	TOTAL	MEN	WOMEN	PERCENT	TOTAL	MEN	WOMEN	PERCENT
<b>TOTAL</b>	<b>27,769</b>	<b>13,343</b>	<b>14,426</b>	<b>100.0</b>	<b>19,639</b>	<b>9,635</b>	<b>10,004</b>	<b>100.0</b>	<b>8,130</b>	<b>3,708</b>	<b>4,422</b>	<b>100.0</b>
LESS THAN 18	30	10	20	0.1	30	10	20	0.2	0	0	0	0.0
18	2,842	1,241	1,601	10.2	2,842	1,241	1,601	14.5	0	0	0	0.0
19	3,695	1,807	1,888	13.3	3,695	1,807	1,888	18.8	0	0	0	0.0
20	3,192	1,517	1,675	11.5	3,186	1,514	1,672	16.2	6	3	3	0.1
<b>21</b>	<b>3,338</b>	<b>1,529</b>	<b>1,809</b>	<b>12.0</b>	<b>3,284</b>	<b>1,512</b>	<b>1,772</b>	<b>16.7</b>	<b>54</b>	<b>17</b>	<b>37</b>	<b>0.7</b>
22	2,955	1,472	1,483	10.6	2,443	1,296	1,147	12.4	512	176	336	6.3
23	2,248	1,142	1,106	8.1	1,370	806	564	7.0	878	336	542	10.8
24	1,640	820	820	5.9	624	362	262	3.2	1,016	458	558	12.5
25	1,255	610	645	4.5	393	232	161	2.0	862	378	484	10.6
<b>26</b>	<b>921</b>	<b>458</b>	<b>463</b>	<b>3.3</b>	<b>265</b>	<b>136</b>	<b>129</b>	<b>1.3</b>	<b>656</b>	<b>322</b>	<b>334</b>	<b>8.1</b>
27	755	427	328	2.7	222	134	88	1.1	533	293	240	6.6
28	549	278	271	2.0	151	79	72	0.8	398	199	199	4.9
29	523	290	233	1.9	135	80	55	0.7	388	210	178	4.8
30	387	216	171	1.4	101	60	41	0.5	286	156	130	3.5
<b>31</b>	<b>347</b>	<b>182</b>	<b>165</b>	<b>1.2</b>	<b>92</b>	<b>53</b>	<b>39</b>	<b>0.5</b>	<b>255</b>	<b>129</b>	<b>126</b>	<b>3.1</b>
32	308	137	171	1.1	80	29	51	0.4	228	108	120	2.8
33	301	147	154	1.1	75	31	44	0.4	226	116	110	2.8
34	232	111	121	0.8	75	32	43	0.4	157	79	78	1.9
35	222	117	105	0.8	54	32	22	0.3	168	85	83	2.1
<b>36</b>	<b>174</b>	<b>86</b>	<b>88</b>	<b>0.6</b>	<b>46</b>	<b>20</b>	<b>26</b>	<b>0.2</b>	<b>128</b>	<b>66</b>	<b>62</b>	<b>1.6</b>
37	145	72	73	0.5	36	18	18	0.2	109	54	55	1.3
38	141	63	78	0.5	32	12	20	0.2	109	51	58	1.3
39	121	62	59	0.4	26	11	15	0.1	95	51	44	1.2
40	119	52	67	0.4	36	14	22	0.2	83	38	45	1.0
<b>41 - 45</b>	<b>481</b>	<b>184</b>	<b>297</b>	<b>1.7</b>	<b>137</b>	<b>51</b>	<b>86</b>	<b>0.7</b>	<b>344</b>	<b>133</b>	<b>211</b>	<b>4.2</b>
46 - 50	407	142	265	1.5	107	28	79	0.5	300	114	186	3.7
51 - 64	413	148	265	1.5	87	23	64	0.4	326	125	201	4.0
65 AND OVER	21	17	4	0.1	14	11	3	0.1	7	6	1	0.1
Missing	7	6	1	0.0	1	1	0	0.0	6	5	1	0.1

SOURCE: Student Information System

NOTE: Includes Knoxville, Institute of Agriculture, Veterinary Medicine, Space Institute, and Health Science Center

## Distribution of Student Credit Hour Loads Fall 2004

CREDIT HOURS	TOTAL	UNDERGRADUATE						GRADUATE	PROFESSIONAL
		FRESHMAN	SOPHOMORE	JUNIOR	SENIOR	5TH YEAR	OTHER		
1	71	1	3	1	11	0	6	49	0
2	23	0	0	0	7	0	7	9	0
3	1,186	8	30	25	137	8	115	862	1
4	128	5	9	10	32	2	19	51	0
5	44	3	2	4	8	0	8	19	0
6	1,347	17	38	57	209	10	38	971	7
7	278	9	11	16	54	8	15	165	0
8	126	3	9	11	32	1	7	63	0
9	1,380	13	43	68	150	7	14	1,085	0
10	632	27	32	36	72	3	4	456	2
11	258	22	14	19	48	6	2	146	1
12	5,714	573	525	721	1,145	62	36	1,239	1,413
13	3,120	1,361	624	412	494	39	16	152	22
14	3,127	1,628	533	406	395	19	12	73	61
15	4,795	1,120	761	943	1,119	44	11	541	256
16	2,667	787	686	519	500	34	5	34	102
17	1,235	356	304	260	253	20	7	4	31
18	1,065	109	157	220	380	17	3	24	155
19	388	23	52	103	140	8	1	59	2
20	111	2	9	7	23	1	0	5	64
21	35	0	0	5	24	3	1	1	1
22	24	1	3	4	14	1	0	1	0
23	4	0	0	0	3	1	0	0	0
24	5	0	0	1	1	0	0	1	2
25	5	0	0	0	5	0	0	0	0
over 25	1	0	0	0	1	0	0	0	0
<b>TOTAL</b>	<b>27,769</b>	<b>6,068</b>	<b>3,845</b>	<b>3,848</b>	<b>5,257</b>	<b>294</b>	<b>327</b>	<b>6,010</b>	<b>2,120</b>
<b>AVERAGE CREDIT HOURS</b>	<b>12.9</b>	<b>14.2</b>	<b>14.3</b>	<b>14.2</b>	<b>13.5</b>	<b>13.5</b>	<b>7.7</b>	<b>9.2</b>	<b>13.4</b>

SOURCE: Student Information System

NOTE: Includes Knoxville, Institute of Agriculture, Veterinary Medicine, Space Institute, and Health Science Center



**Student Credit Hours  
By Level, College, and Term  
FY 1999-2004**

	SUMMER TERM					FALL TERM					SPRING TERM				
	1999	2000	2001	2002	2003	1999	2000	2001	2002	2003	2000	2001	2002	2003	2004
<b>UNIVERSITY TOTAL</b>	<b>64,636</b>	<b>62,690</b>	<b>61,220</b>	<b>61,000</b>	<b>59,702</b>	<b>328,687</b>	<b>325,232</b>	<b>328,972</b>	<b>328,855</b>	<b>321,860</b>	<b>305,105</b>	<b>302,838</b>	<b>307,023</b>	<b>302,494</b>	<b>329,614</b>
<b>UNDERGRADUATE TOTAL</b>	<b>44,472</b>	<b>43,550</b>	<b>42,687</b>	<b>43,161</b>	<b>42,497</b>	<b>277,953</b>	<b>275,060</b>	<b>278,412</b>	<b>276,492</b>	<b>269,548</b>	<b>255,672</b>	<b>254,722</b>	<b>256,906</b>	<b>253,133</b>	<b>279,582</b>
<b>GRADUATE/PROFESSIONAL TOTAL</b>	<b>20,164</b>	<b>19,140</b>	<b>18,533</b>	<b>17,839</b>	<b>17,205</b>	<b>50,734</b>	<b>50,172</b>	<b>50,560</b>	<b>52,363</b>	<b>52,312</b>	<b>49,433</b>	<b>48,116</b>	<b>50,117</b>	<b>49,361</b>	<b>50,032</b>
<b>UNDERGRADUATE</b>															
Agricultural Sciences & Natural Resources	50	38	56	425	371	7,920	7,636	8,759	8,553	7,208	7,223	7,072	8,427	8,425	6,456
Architecture & Design	678	517	555	410	382	5,168	5,082	4,727	5,233	4,837	4,770	4,554	4,392	4,651	4,299
Arts & Sciences	25,336	25,233	24,196	23,933	24,451	176,084	173,573	173,696	172,406	171,224	157,069	156,067	155,484	152,444	185,338
Business Administration	7,241	7,368	7,559	8,478	6,950	30,211	31,795	33,146	33,905	33,336	30,801	31,774	32,593	32,667	31,240
Communication & Information	2,169	2,322	2,398	2,392	2,006	11,164	11,760	11,998	12,927	12,569	10,810	11,020	11,507	11,882	12,348
Education, Health & Human Sciences	6,382	5,790	5,869	5,706	6,464	24,406	24,395	24,337	23,236	20,434	27,354	27,235	26,822	25,587	22,735
Engineering	2,156	1,820	1,588	1,257	1,365	13,417	12,453	12,492	12,820	12,652	11,772	11,197	11,449	11,509	11,392
Intercollegiate Programs	15	12	0	0	0	4,475	3,787	4,183	2,082	2,066	1,028	982	1,102	832	733
Nursing	402	381	403	481	424	3,608	3,368	3,492	3,625	3,865	3,543	3,723	3,625	3,684	3,759
Social Work	36	69	60	48	84	669	543	771	843	630	563	540	693	632	629
University	7	0	3	31	0	831	668	811	862	727	739	558	812	820	653
<b>GRADUATE/PROFESSIONAL</b>															
Agricultural Sciences & Natural Resources	430	388	357	297	323	1,223	1,160	1,017	1,213	1,137	1,230	1,101	1,113	1,270	1,338
Architecture & Design	106	16	24	12	9	228	288	334	233	333	252	317	390	289	318
Arts & Sciences	4,466	4,292	3,981	3,374	3,916	10,984	10,861	11,243	11,093	11,480	10,755	10,296	10,957	10,898	11,333
Biomedical Science	60	0	0	0	0	0	0	0	0	0	6	0	0	0	0
Business Administration	1,642	1,580	1,517	1,541	1,492	7,181	6,845	6,552	7,233	7,427	6,053	5,952	6,193	4,919	5,449
Communication & Information	959	908	689	701	734	1,511	1,418	1,379	1,493	1,524	1,518	1,342	1,374	1,437	1,563
Education, Health & Human Sciences	8,875	8,350	8,205	7,876	6,567	11,009	10,925	10,159	10,203	9,237	11,602	11,385	11,020	10,668	9,719
Engineering	1,438	1,522	1,370	1,440	1,447	3,376	3,200	3,346	4,168	4,686	3,191	2,870	3,585	4,156	4,451
Law	319	539	379	223	198	7,078	6,916	6,972	6,965	6,858	6,824	6,621	6,668	6,722	6,570
Nursing	307	322	401	647	714	925	842	1,270	1,237	1,360	849	869	1,070	1,063	1,191
Social Work	764	506	785	800	856	2,613	2,765	2,923	3,049	2,968	2,518	2,464	2,862	2,765	2,809
Veterinary Medicine	792	708	810	922	928	4,594	4,916	5,329	5,440	5,207	4,632	4,869	4,882	5,165	5,216
University	6	9	15	6	21	12	36	36	36	95	3	30	3	9	75

SOURCE: Class Tape (14th day)

NOTE: Health Science Center data are not included

**Top 10 Enrollment Feeders  
By Tennessee County, State, and Country  
Fall 2004**

COUNTY	TOTAL	UNDERGRAD	GRAD
TENNESSEE	21,732	16,262	5,470
Knox	7,527	5,448	2,079
Shelby	2,263	1,519	744
Davidson	1,194	875	319
Williamson	1,114	1,012	102
Blount	978	732	246
Hamilton	938	726	212
Anderson	708	549	159
Sullivan	541	439	102
Sevier	475	399	76
Sumner	346	290	56

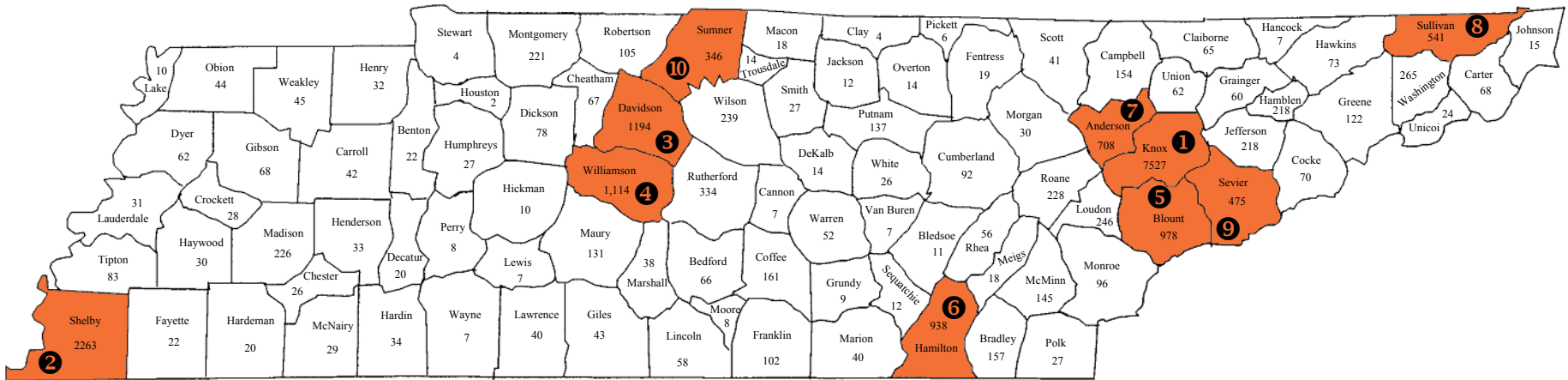
STATE	TOTAL	UNDERGRAD	GRAD
OUT-OF-STATE	4,950	3,156	1,794
Virginia	657	508	149
Georgia	626	480	146
North Carolina	404	252	152
Ohio	394	328	66
Florida	210	139	71
South Carolina	193	127	66
Mississippi	187	60	127
Illinois	185	127	58
Alabama	184	98	86
Arkansas	173	30	143

COUNTRY	TOTAL	UNDERGRAD	GRAD
INTERNATIONAL	1,082	216	866
China	300	13	287
India	199	13	186
Republic of Korea	114	23	91
Canada	32	17	15
Taiwan	30	11	19
Turkey	22	15	7
Japan	20	1	19
United Kingdom	20	10	10
Russia	19	2	17
Thailand	17	1	16

SOURCE: Student Information System

NOTE: Includes Knoxville, Institute of Agriculture, Veterinary Medicine, Space Institute, and Health Science Center

# Enrollment By County Fall 2004



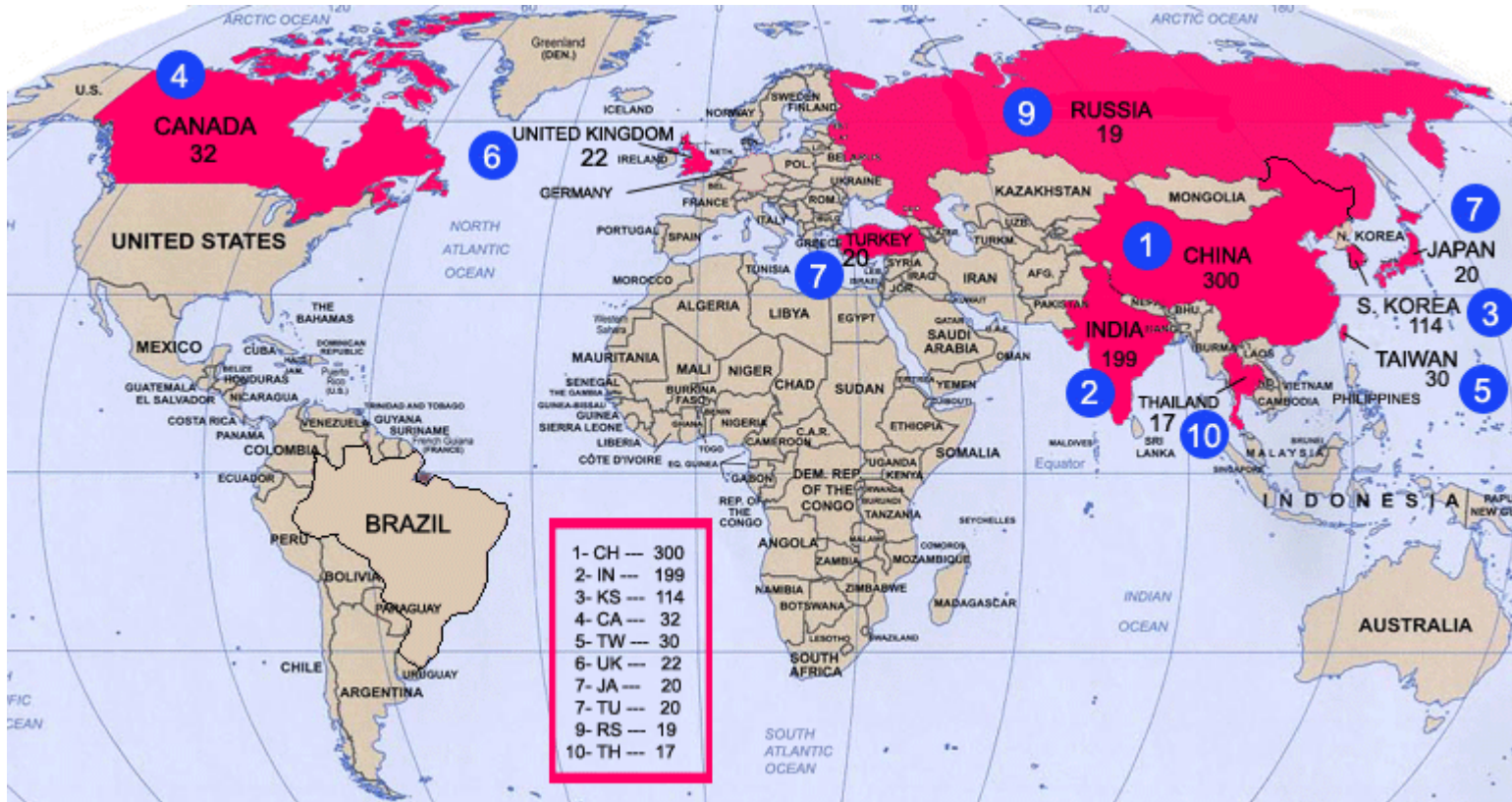
1- Knox	7,527
2- Shelby	2,263
3- Davidson	1,194
4- Williamson	1,114
5- Blount	978
6- Hamilton	938
7- Anderson	708
8- Sullivan	541
9- Sevier	475
10- Sumner	346

SOURCE: Student Information System

NOTE: Includes Knoxville, Institute of Agriculture, Veterinary Medicine, Space Institute, and Health Science Center



# Enrollment By Country Fall 2004



SOURCE: Student Information System

NOTE: Includes Knoxville, Institute of Agriculture, Veterinary Medicine, Space Institute, and Health Science Center

## Headcount Enrollment By Race and Gender Fall 1988-2004

YEAR	TOTAL			AMERICAN INDIAN			ASIAN			BLACK			HISPANIC			WHITE			NOT REPORTED		
	Total	Men	Women	Total	Men	Women	Total	Men	Women	Total	Men	Women	Total	Men	Women	Total	Men	Women	Total	Men	Women
1988	24,390	12,668	11,722	44	19	25	681	453	228	1,167	501	666	139	89	50	22,359	11,606	10,753	0	0	0
1989	25,016	12,875	12,141	41	21	20	715	467	248	1,237	556	681	168	94	74	22,855	11,737	11,118	0	0	0
1990	25,414	13,086	12,328	44	18	26	787	507	280	1,317	584	733	182	102	80	23,084	11,875	11,209	0	0	0
1991	25,598	13,061	12,537	50	23	27	920	589	331	1,349	599	750	186	99	87	23,093	11,751	11,342	0	0	0
1992	25,998	13,377	12,621	58	35	23	986	632	354	1,414	631	783	226	116	110	23,314	11,963	11,351	0	0	0
1993	25,890	13,157	12,733	79	40	39	1,030	638	392	1,361	598	763	243	118	125	23,177	11,763	11,414	0	0	0
1994	25,412	12,935	12,477	73	37	36	995	612	383	1,320	593	727	256	131	125	22,768	11,562	11,206	0	0	0
1995	25,251	12,534	12,717	86	40	46	995	594	401	1,260	554	706	259	137	122	22,651	11,209	11,442	0	0	0
1996	25,086	12,349	12,737	83	41	42	982	568	414	1,216	506	710	264	141	123	22,541	11,093	11,448	0	0	0
1997	25,039	12,289	12,750	83	47	36	1,006	564	442	1,288	547	741	285	156	129	22,377	10,975	11,402	0	0	0
1998	25,611	12,393	13,218	74	37	37	1,024	570	454	1,414	591	823	295	155	140	22,804	11,040	11,764	0	0	0
1999	25,981	12,493	13,488	84	36	48	1,046	579	467	1,518	602	916	320	164	156	23,013	11,112	11,901	0	0	0
2000	25,474	12,074	13,400	77	32	45	1,083	577	506	1,540	643	897	312	155	157	22,364	10,619	11,745	98	48	50
2001	26,033	12,243	13,790	85	30	55	1,137	630	507	1,669	668	1,001	344	165	179	22,635	10,672	11,963	163	78	85
2002*	27,971	13,285	14,686	101	42	59	1,460	794	666	2,016	764	1,252	368	182	186	23,690	11,353	12,337	336	150	186
2003*	27,281	13,073	14,208	96	41	55	1,454	817	637	2,020	786	1,234	357	174	183	22,988	11,084	11,904	366	171	195
2004*	27,769	13,343	14,426	113	54	59	1,458	833	625	2,180	836	1,344	387	186	201	23,290	11,263	12,027	341	171	170

SOURCE: Student Information System

\*Data for 2002 - 2004 include Knoxville, Institute of Agriculture, Veterinary Medicine, Space Institute, and Health Science Center

**Total Headcount Enrollment  
By Level, Full-Time and Part-Time  
Fall 2000-2004**

	TOTAL					FULL-TIME					PART-TIME				
	2000	2001	2002*	2003*	2004*	2000	2001	2002*	2003*	2004*	2000	2001	2002*	2003*	2004*
<b>TOTAL</b>	<b>25,731</b>	<b>25,589</b>	<b>25,865</b>	<b>27,239</b>	<b>27,769</b>	<b>21,515</b>	<b>21,701</b>	<b>21,859</b>	<b>23,288</b>	<b>23,986</b>	<b>4,216</b>	<b>3,888</b>	<b>4,006</b>	<b>3,951</b>	<b>3,783</b>
First-time Freshmen	3,833	3,958	3,682	3,579	4,422	3,794	3,898	3,638	3,529	4,395	39	60	44	50	27
Other Freshmen	1,834	1,721	1,683	1,615	1,646	1,683	1,591	1,602	1,521	1,565	151	130	81	94	81
Sophomore	4,239	4,253	4,078	3,903	3,845	3,981	4,024	3,862	3,701	3,654	258	229	216	202	191
Undergraduate Special	378	327	376	318	327	90	84	119	98	92	288	243	257	220	235
Junior	4,054	4,139	4,084	3,998	3,848	3,636	3,795	3,763	3,736	3,601	418	344	321	262	247
Senior	5,324	5,429	5,737	5,487	5,257	4,396	4,511	4,809	4,645	4,497	928	918	928	842	760
5th Year Undergraduate	347	297	316	324	294	281	232	261	283	249	66	65	55	41	45
<b>UNDERGRADUATE TOTAL</b>	<b>20,009</b>	<b>20,124</b>	<b>19,956</b>	<b>19,224</b>	<b>19,639</b>	<b>17,861</b>	<b>18,135</b>	<b>18,054</b>	<b>17,513</b>	<b>18,053</b>	<b>2,148</b>	<b>1,989</b>	<b>1,902</b>	<b>1,711</b>	<b>1,586</b>
Graduate Special	363	328	414	409	485	64	76	98	72	78	299	252	316	337	407
Master Candidate	3,363	3,281	3,308	3,753	3,646	2,298	2,279	2,197	2,561	2,567	1,065	1,002	1,111	1,192	1,079
Education Special	62	46	42	56	40	14	6	6	4	6	48	40	36	52	34
Doctoral - Early	1,259	1,129	1,201	1,390	1,598	752	688	719	922	1,072	507	441	482	468	526
Doctoral - Late	200	225	213	311	237	54	62	59	132	98	146	163	154	179	139
Post Doctoral	2	0	4	3	4	0	0	1	1	0	2	0	3	2	4
<b>GRADUATE TOTAL</b>	<b>5,249</b>	<b>5,009</b>	<b>5,182</b>	<b>5,922</b>	<b>6,010</b>	<b>3,182</b>	<b>3,111</b>	<b>3,080</b>	<b>3,692</b>	<b>3,821</b>	<b>2,067</b>	<b>1,898</b>	<b>2,102</b>	<b>2,230</b>	<b>2,189</b>
Professional 1st	273	272	344	748	859	272	272	344	746	857	1	0	0	2	2
Professional 2nd	56	68	136	430	328	56	68	136	428	327	0	0	0	2	1
Professional 3rd	144	116	229	554	611	144	115	227	550	609	0	1	2	4	2
Professional 4th	0	0	18	361	322	0	0	18	359	319	0	0	0	2	3
<b>PROFESSIONAL TOTAL</b>	<b>473</b>	<b>456</b>	<b>727</b>	<b>2,093</b>	<b>2,120</b>	<b>472</b>	<b>455</b>	<b>725</b>	<b>2,083</b>	<b>2,112</b>	<b>1</b>	<b>1</b>	<b>2</b>	<b>10</b>	<b>8</b>

SOURCE: Student Information System

\*Data for 2002 - 2004 include Knoxville, Institute of Agriculture, Veterinary Medicine, Space Institute, and Health Science Center

**First-Time Freshmen Headcount Enrollment  
By College, Race, and Gender  
Fall 2004**

	TOTAL			AMERICAN INDIAN			ASIAN			BLACK			HISPANIC			WHITE			NOT REPORTED		
	Total	Men	Women	Total	Men	Women	Total	Men	Women	Total	Men	Women	Total	Men	Women	Total	Men	Women	Total	Men	Women
<b>TOTAL</b>	<b>4,422</b>	<b>2,120</b>	<b>2,302</b>	<b>17</b>	<b>10</b>	<b>7</b>	<b>129</b>	<b>79</b>	<b>50</b>	<b>442</b>	<b>172</b>	<b>270</b>	<b>64</b>	<b>28</b>	<b>36</b>	<b>3,751</b>	<b>1,820</b>	<b>1,931</b>	<b>19</b>	<b>11</b>	<b>8</b>
<b>COLLEGE</b>																					
Agricultural Sciences & Natural Resources	141	74	67	0	0	0	1	0	1	11	3	8	1	0	1	128	71	57	0	0	0
Architecture & Design	100	45	55	0	0	0	1	0	1	4	2	2	3	0	3	92	43	49	0	0	0
Arts & Sciences	1,589	602	987	6	2	4	50	23	27	197	58	139	19	6	13	1,312	510	802	5	3	2
Business Administration	604	360	244	2	2	0	24	15	9	53	30	23	11	7	4	510	305	205	4	1	3
Communication & Information	251	87	164	0	0	0	4	2	2	34	8	26	5	2	3	206	73	133	2	2	0
Education, Health & Human Sciences	201	72	129	0	0	0	5	2	3	24	10	14	3	1	2	169	59	110	0	0	0
Engineering	533	448	85	3	3	0	20	18	2	62	41	21	9	8	1	436	376	60	3	2	1
Nursing	164	16	148	2	0	2	4	3	1	16	2	14	3	0	3	139	11	128	0	0	0
Social Work	14	1	13	0	0	0	0	0	0	1	0	1	2	0	2	11	1	10	0	0	0
University	825	415	410	4	3	1	20	16	4	40	18	22	8	4	4	748	371	377	5	3	2

SOURCE: Student Information System

NOTE: The Health Science Center does not enroll first-time freshmen



## Applied, Admitted, and Enrolled Freshmen Fall 1984-2004

Year	Number Applied	Number Admitted	Percentage of Applicants Admitted	Number Enrolled	Percentage of Applicants Enrolled	Percentage of Admitted Enrolled
1984	6,153	4,679	76%	3,353	54%	72%
1985	6,139	4,891	80%	3,494	57%	71%
1986	6,699	5,334	80%	3,699	55%	69%
1987	6,892	5,530	80%	3,834	56%	69%
1988	7,822	6,021	77%	3,795	49%	63%
1989	7,222	5,739	79%	3,390	47%	59%
1990	7,526	5,816	77%	3,418	45%	59%
1991	6,994	5,070	72%	3,060	44%	60%
1992	7,583	5,573	73%	3,219	42%	58%
1993	7,473	5,372	72%	3,013	40%	56%
1994	7,027	5,179	74%	2,912	41%	56%
1995	8,305	5,977	72%	3,506	42%	59%
1996	8,630	6,438	75%	3,692	43%	57%
1997	8,923	6,740	76%	3,890	44%	58%
1998	9,464	7,177	76%	3,806	40%	53%
1999	10,634	7,148	67%	4,155	39%	58%
2000	10,171	6,344	62%	3,833	38%	60%
2001	8,263	5,675	69%	3,958	48%	70%
2002	9,724	5,629	58%	3,682	38%	65%
2003	9,514	6,790	71%	3,579	38%	53%
2004	10,832	4,793	44%	4,422	41%	92%

SOURCE: Office of Enrollment Services

## Average Test Score, High School GPA, and Class Ranking For First-Time Freshmen Fall 1991-2004

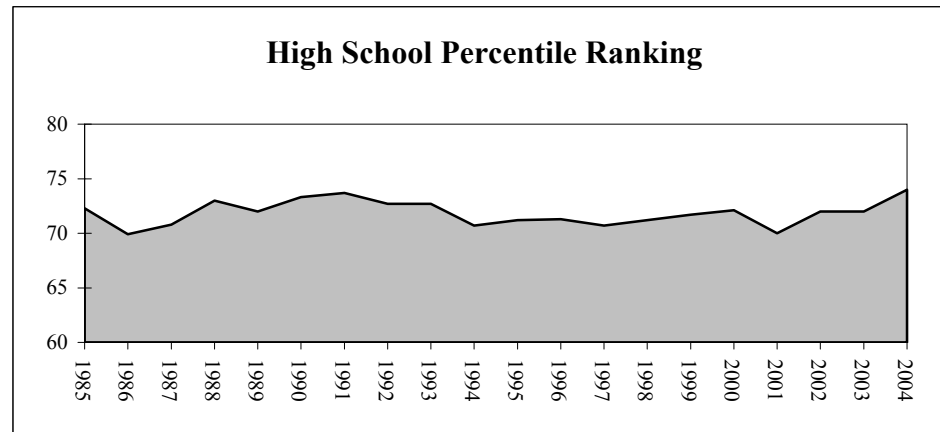
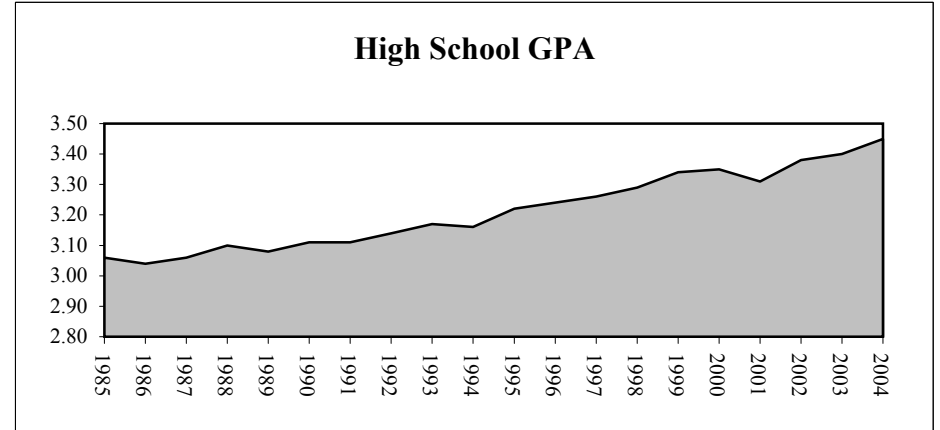
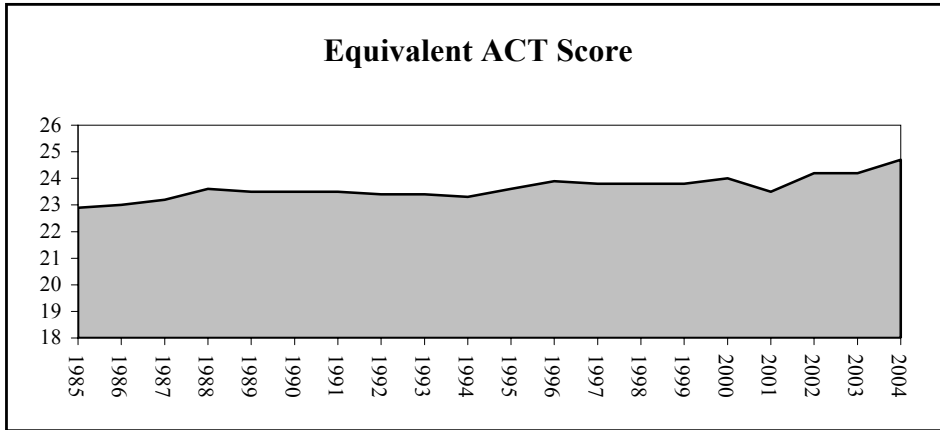
	1991	1992	1993	1994	1995	1996	1997	1998	1999	2000	2001	2002	2003	2004*
<b>Equivalent ACT</b>														
Number	2,989	3,160	2,960	2,867	3,458	3,649	3,851	3,781	4,132	3,818	3,932	3,662	3,556	4,394
Average	23.5	23.4	23.4	23.3	23.6	23.9	23.8	23.8	23.8	24.0	23.5	24.2	24.2	24.7
<b>ACT Composite</b>														
Number	2,611	2,742	2,618	2,539	3,067	3,240	3,356	3,294	3,581	3,303	3,411	3,138	3,086	3,859
Average	23.3	23.2	23.1	23.1	23.4	23.6	23.6	23.6	23.6	23.9	23.4	24.0	24.1	24.7
<b>SAT Total</b>														
Number	1,370	1,439	1,287	1,181	1,478	1,665	1,771	1,734	1,829	1,741	1,714	1,699	1,634	1,947
Average	1,093	1,089	1,095	1,097	1,106	1,113	1,101	1,104	1,103	1,113	1,092	1,110	1,116	1,113
<b>High School GPA</b>														
Number	3,026	3,172	2,982	2,896	3,473	3,657	3,869	3,777	4,131	3,818	3,932	3,666	3,567	4,404
Average	3.11	3.14	3.17	3.16	3.22	3.24	3.26	3.29	3.34	3.35	3.31	3.38	3.40	3.45
3.50 - 4.00	783	890	911	890	1,142	1,212	1,398	1,459	1,748	1,612	1,677	1,714	1,640	2,179
3.00 - 3.49	1,001	1,001	955	929	1,143	1,050	1,284	1,255	1,377	1,335	1,214	1,113	1,123	1,457
2.50 - 2.99	844	919	788	739	876	716	921	853	814	699	751	633	635	637
2.00 - 2.49	388	346	314	329	299	250	255	208	189	168	266	182	157	123
< 2.00	10	16	14	9	13	0	11	2	3	4	24	24	12	8
<b>High School Percentile Ranking</b>														
Number	2,295	2,379	2,139	2,003	2,322	2,149	2,079	2,055	2,096	1,962	3,257	2,930	2,778	3,104
Average	74	73	73	71	71	71	71	72	72	72	70	72	72	74
76 - 99	1,257	1,267	1,151	970	1,154	1,106	1,045	1,054	1,088	1,035	1,647	1,579	1,485	1,747
51 - 75	701	707	627	639	745	653	637	613	657	594	983	845	839	917
26 - 50	294	331	305	332	364	320	338	327	291	276	480	409	383	371
1 - 25	43	74	56	62	59	70	59	61	60	57	147	97	71	69

SOURCE: Student Information System and Student Record Master

NOTE: Equivalent ACT scores are based on the higher of ACT composite or SAT total converted to ACT

\*Beginning in 2004 a "super score" is used for the Composite ACT with the score based on the highest score of individual components

## Average Equivalent ACT Scores, High School GPA And Class Ranking for First-Time Freshmen Fall 1985-2004



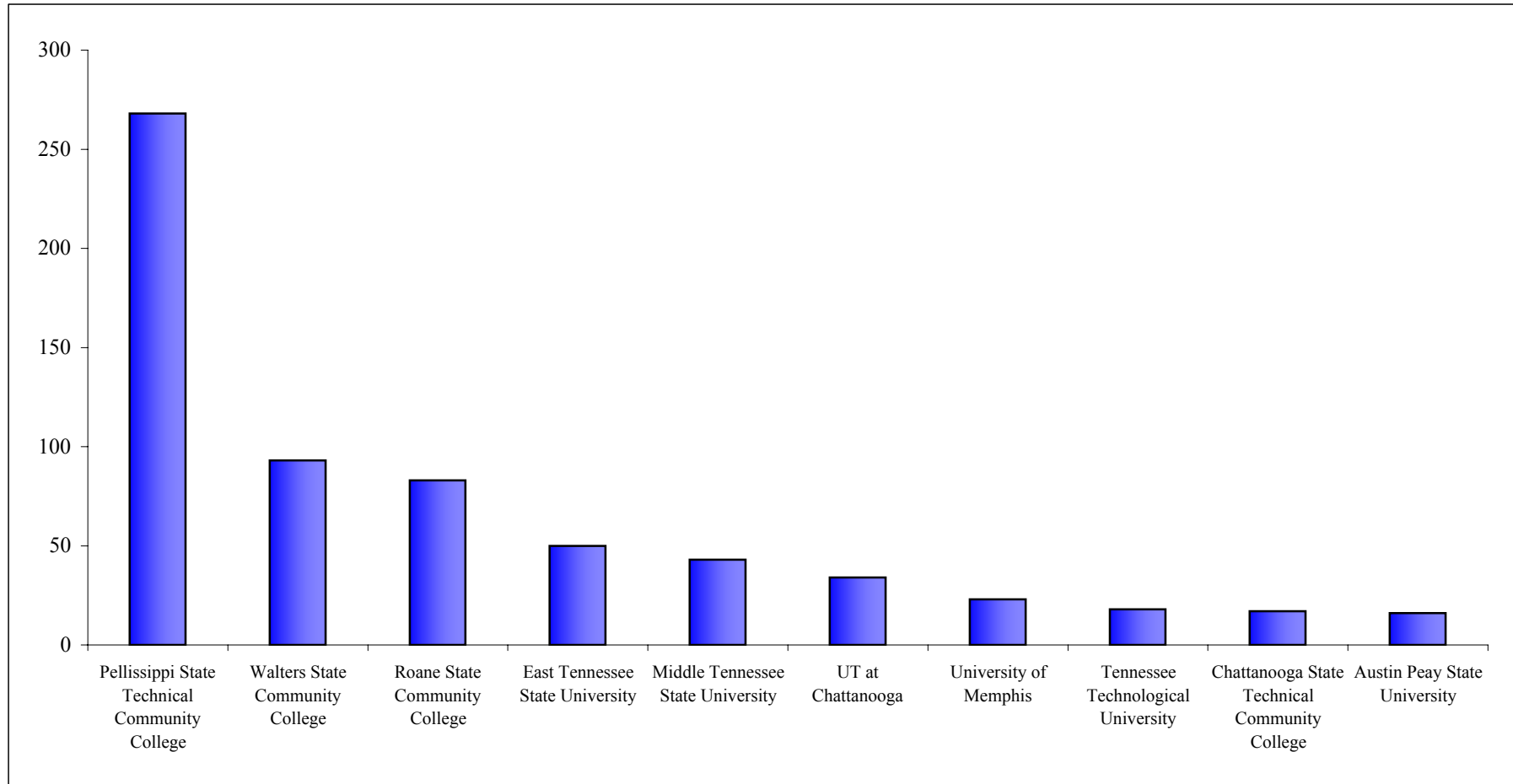
SOURCES: Student Information System and Student Record Master

## Undergraduate Transfer Headcount Enrollment By College, Race, and Gender Fall 2004

	TOTAL			AMERICAN INDIAN			ASIAN			BLACK			HISPANIC			WHITE			NOT REPORTED		
	Total	Men	Women	Total	Men	Women	Total	Men	Women	Total	Men	Women	Total	Men	Women	Total	Men	Women	Total	Men	Women
<b>TOTAL</b>	<b>1,398</b>	<b>632</b>	<b>766</b>	<b>17</b>	<b>7</b>	<b>10</b>	<b>46</b>	<b>25</b>	<b>21</b>	<b>88</b>	<b>33</b>	<b>55</b>	<b>31</b>	<b>13</b>	<b>18</b>	<b>1,210</b>	<b>550</b>	<b>660</b>	<b>6</b>	<b>4</b>	<b>2</b>
<b>COLLEGE</b>																					
Agricultural Sciences & Natural Resources	70	39	31	0	0	0	0	0	0	1	0	1	2	0	2	67	39	28	0	0	0
Architecture & Design	10	6	4	0	0	0	1	1	0	0	0	0	0	0	0	8	4	4	1	1	0
Arts & Sciences	481	227	254	8	4	4	19	10	9	26	13	13	11	6	5	414	193	221	3	1	2
Business Administration	144	79	65	5	1	4	9	6	3	3	1	2	4	1	3	122	69	53	1	1	0
Communication & Information	78	33	45	0	0	0	1	1	0	7	2	5	3	0	3	67	30	37	0	0	0
Education, Health & Human Sciences	86	19	67	0	0	0	0	0	0	4	1	3	2	0	2	80	18	62	0	0	0
Engineering	68	56	12	0	0	0	2	2	0	7	5	2	1	1	0	58	48	10	0	0	0
Health Science Center	131	8	123	2	1	1	5	1	4	21	3	18	2	0	2	101	3	98	0	0	0
Nursing	71	12	59	0	0	0	1	0	1	4	0	4	0	0	0	66	12	54	0	0	0
Social Work	8	0	8	0	0	0	0	0	0	0	0	0	0	0	0	8	0	8	0	0	0
University	251	153	98	2	1	1	8	4	4	15	8	7	6	5	1	219	134	85	1	1	0

SOURCE: Student Information System

## Undergraduate Transfer Headcount Enrollment Top Ten Feeder Institutions Fall 2004



SOURCE: Student Information System

NOTE: Includes Knoxville, Institute of Agriculture, Veterinary Medicine, Space Institute, and Health Science Center

**Applied, Admitted, and Enrolled  
Undergraduate Transfer Students  
Fall 1984-2004**

Year	Number Applied	Number Admitted	Percentage of Applicants Admitted	Number Enrolled	Percentage of Applicants Enrolled	Percentage of Admitted Enrolled
1984	2,287	1,699	74%	1,374	60%	81%
1985	2,003	1,489	74%	1,045	52%	70%
1986	2,119	1,603	76%	1,097	52%	68%
1987	1,882	1,350	72%	934	50%	69%
1988	2,080	1,461	70%	938	45%	64%
1989	2,235	1,615	72%	1,097	49%	68%
1990	2,576	1,837	71%	1,226	48%	67%
1991	2,662	1,868	70%	1,249	47%	67%
1992	2,725	1,938	71%	1,481	54%	76%
1993	2,898	2,084	72%	1,586	55%	76%
1994	2,956	2,141	72%	1,624	55%	76%
1995	2,830	1,987	70%	1,352	48%	68%
1996	2,784	1,991	72%	1,434	52%	72%
1997	2,554	1,829	72%	1,173	46%	64%
1998	2,489	1,730	70%	1,214	49%	70%
1999	2,647	1,826	69%	1,427	54%	78%
2000	2,479	1,754	71%	1,246	50%	71%
2001	2,208	1,727	78%	1,411	64%	82%
2002*	2,449	1,688	69%	1,372	56%	81%
2003*	2,319	1,652	71%	1,384	60%	84%
2004*	2,376	1,724	69%	1,159	56%	81%

SOURCE: Office of Enrollment Services

\*Data for 2002 - 2004 include Knoxville, Institute of Agriculture, Veterinary Medicine, Space Institute, and Health Science Center

## Undergraduate Headcount Enrollment By Race and Gender Fall 1988-2004

YEAR	TOTAL			AMERICAN INDIAN			ASIAN			BLACK			HISPANIC			WHITE			NOT REPORTED		
	Total	Men	Women	Total	Men	Women	Total	Men	Women	Total	Men	Women	Total	Men	Women	Total	Men	Women	Total	Men	Women
1988	18,770	9,811	8,959	25	11	14	329	193	136	863	390	473	74	47	27	17,479	9,170	8,309	0	0	0
1989	19,067	9,891	9,176	26	14	12	339	196	143	900	422	478	94	51	43	17,708	9,208	8,500	0	0	0
1990	19,532	10,052	9,480	28	11	17	371	216	155	997	455	542	106	58	48	18,030	9,312	8,718	0	0	0
1991	19,385	9,951	9,434	33	16	17	452	268	184	1,033	469	564	103	55	48	17,764	9,143	8,621	0	0	0
1992	19,342	10,095	9,247	41	25	16	510	306	204	1,043	485	558	144	79	65	17,604	9,200	8,404	0	0	0
1993	18,986	9,770	9,216	52	28	24	543	312	231	990	453	537	157	83	74	17,244	8,894	8,350	0	0	0
1994	18,608	9,611	8,997	46	24	22	524	307	217	946	442	504	177	95	82	16,915	8,743	8,172	0	0	0
1995	18,735	9,470	9,265	53	27	26	571	324	247	864	404	460	179	98	81	17,068	8,617	8,451	0	0	0
1996	18,826	9,474	9,352	52	26	26	570	304	266	864	395	469	199	107	92	17,141	8,642	8,499	0	0	0
1997	19,061	9,520	9,541	55	33	22	637	335	302	972	447	525	210	116	94	17,187	8,589	8,598	0	0	0
1998	19,692	9,716	9,976	52	29	23	627	325	302	1,087	482	605	219	117	102	17,707	8,763	8,944	0	0	0
1999	20,259	9,912	10,347	64	31	33	604	315	289	1,196	501	695	234	125	109	18,161	8,940	9,221	0	0	0
2000	20,009	9,718	10,291	60	28	32	585	293	292	1,222	541	681	237	127	110	17,822	8,686	9,136	83	43	40
2001	20,124	9,736	10,388	64	26	38	592	313	279	1,310	559	751	249	123	126	17,775	8,649	9,126	134	66	68
2002*	19,956	9,710	10,246	76	32	44	630	307	323	1,399	584	815	263	131	132	17,383	8,560	8,823	205	96	109
2003*	19,224	9,392	9,832	66	27	39	573	280	293	1,423	605	818	239	122	117	16,713	8,255	8,458	210	103	107
2004*	19,639	9,635	10,004	81	41	40	588	315	273	1,568	674	894	274	138	136	16,940	8,374	8,566	188	93	95

SOURCE: Student Information System

\*Data for 2002 - 2004 include Knoxville, Institute of Agriculture, Veterinary Medicine, Space Institute, and Health Science Center

**First-Time Graduate and Professional Headcount Enrollment  
By College, Race, and Gender  
Fall 2004**

	TOTAL			AMERICAN INDIAN			ASIAN			BLACK			HISPANIC			WHITE			NOT REPORTED		
	Total	Men	Women	Total	Men	Women	Total	Men	Women	Total	Men	Women	Total	Men	Women	Total	Men	Women	Total	Men	Women
<b>TOTAL</b>	<b>1,995</b>	<b>829</b>	<b>1,166</b>	<b>7</b>	<b>3</b>	<b>4</b>	<b>156</b>	<b>89</b>	<b>67</b>	<b>148</b>	<b>43</b>	<b>105</b>	<b>21</b>	<b>11</b>	<b>10</b>	<b>1,619</b>	<b>660</b>	<b>959</b>	<b>44</b>	<b>23</b>	<b>21</b>
<b>COLLEGE</b>																					
Agricultural Sciences & Natural Resources	62	34	28	0	0	0	3	1	2	2	1	1	1	1	0	53	29	24	3	2	1
Architecture & Design	5	4	1	0	0	0	2	1	1	0	0	0	0	0	0	3	3	0	0	0	0
Arts & Sciences	381	187	194	0	0	0	27	17	10	14	6	8	10	6	4	322	152	170	8	6	2
Business Administration	190	117	73	1	1	0	22	14	8	10	5	5	1	1	0	149	91	58	7	5	2
Communication & Information	93	23	70	1	0	1	4	0	4	4	1	3	0	0	0	84	22	62	0	0	0
Education, Health & Human Sciences	418	107	311	1	0	1	23	6	17	30	7	23	3	0	3	356	93	263	5	1	4
Engineering	221	176	45	1	1	0	48	36	12	10	5	5	1	1	0	158	130	28	3	3	0
Health Science Center	79	30	49	0	0	0	17	8	9	9	3	6	1	0	1	49	18	31	3	1	2
Intercollegiate Programs	4	3	1	0	0	0	1	1	0	0	0	0	0	0	0	3	2	1	0	0	0
Law	138	63	75	2	1	1	0	0	0	18	7	11	0	0	0	111	52	59	7	3	4
Nursing	31	9	22	0	0	0	0	0	0	1	0	1	0	0	0	30	9	21	0	0	0
Social Work	173	22	151	1	0	1	4	1	3	44	5	39	2	1	1	122	15	107	0	0	0
Veterinary Medicine	66	13	53	0	0	0	1	0	1	0	0	0	1	0	1	60	12	48	4	1	3
University	134	41	93	0	0	0	4	4	0	6	3	3	1	1	0	119	32	87	4	1	3

SOURCE: Student Information System

NOTE: Includes Knoxville, Institute of Agriculture, Veterinary Medicine, Space Institute, and Health Science Center



## Graduate Headcount Enrollment By Race and Gender Fall 1988-2004

YEAR	TOTAL			AMERICAN INDIAN			ASIAN			BLACK			HISPANIC			WHITE			NOT REPORTED		
	Total	Men	Women	Total	Men	Women	Total	Men	Women	Total	Men	Women	Total	Men	Women	Total	Men	Women	Total	Men	Women
1988	5,620	2,857	2,763	19	8	11	352	260	92	304	111	193	65	42	23	4,880	2,436	2,444	0	0	0
1989	5,949	2,984	2,965	15	7	8	376	271	105	337	134	203	74	43	31	5,147	2,529	2,618	0	0	0
1990	5,882	3,034	2,848	16	7	9	416	291	125	320	129	191	76	44	32	5,054	2,563	2,491	0	0	0
1991	6,213	3,110	3,103	17	7	10	468	321	147	316	130	186	83	44	39	5,329	2,608	2,721	0	0	0
1992	6,656	3,282	3,374	17	10	7	476	326	150	371	146	225	82	37	45	5,710	2,763	2,947	0	0	0
1993	6,904	3,387	3,517	27	12	15	487	326	161	371	145	226	86	35	51	5,933	2,869	3,064	0	0	0
1994	6,804	3,324	3,480	27	13	14	471	305	166	374	151	223	79	36	43	5,853	2,819	3,034	0	0	0
1995	6,516	3,064	3,452	33	13	20	424	270	154	396	150	246	80	39	41	5,583	2,592	2,991	0	0	0
1996	6,260	2,875	3,385	31	15	16	412	264	148	352	111	241	65	34	31	5,400	2,451	2,949	0	0	0
1997	5,978	2,769	3,209	28	14	14	369	229	140	316	100	216	75	40	35	5,190	2,386	2,804	0	0	0
1998	5,919	2,677	3,242	22	8	14	397	245	152	327	109	218	76	38	38	5,097	2,277	2,820	0	0	0
1999	5,722	2,581	3,141	20	5	15	442	264	178	322	101	221	86	39	47	4,852	2,172	2,680	0	0	0
2000	5,465	2,356	3,109	17	4	13	498	284	214	318	102	216	75	28	47	4,542	1,933	2,609	15	5	10
2001	5,909	2,507	3,402	21	4	17	545	317	228	359	109	250	95	42	53	4,860	2,023	2,837	29	12	17
2002*	8,015	3,575	4,440	25	10	15	830	487	343	617	180	437	105	51	54	6,307	2,793	3,514	131	54	77
2003*	8,057	3,681	4,376	30	14	16	881	537	344	597	181	416	118	52	66	6,275	2,829	3,446	156	68	88
2004*	8,130	3,708	4,422	32	13	19	870	518	352	612	162	450	113	48	65	6,350	2,889	3,461	153	78	75

SOURCE: Student Information System

\*Data for 2002 - 2004 include Knoxville, Institute of Agriculture, Veterinary Medicine, Space Institute, and Health Science Center

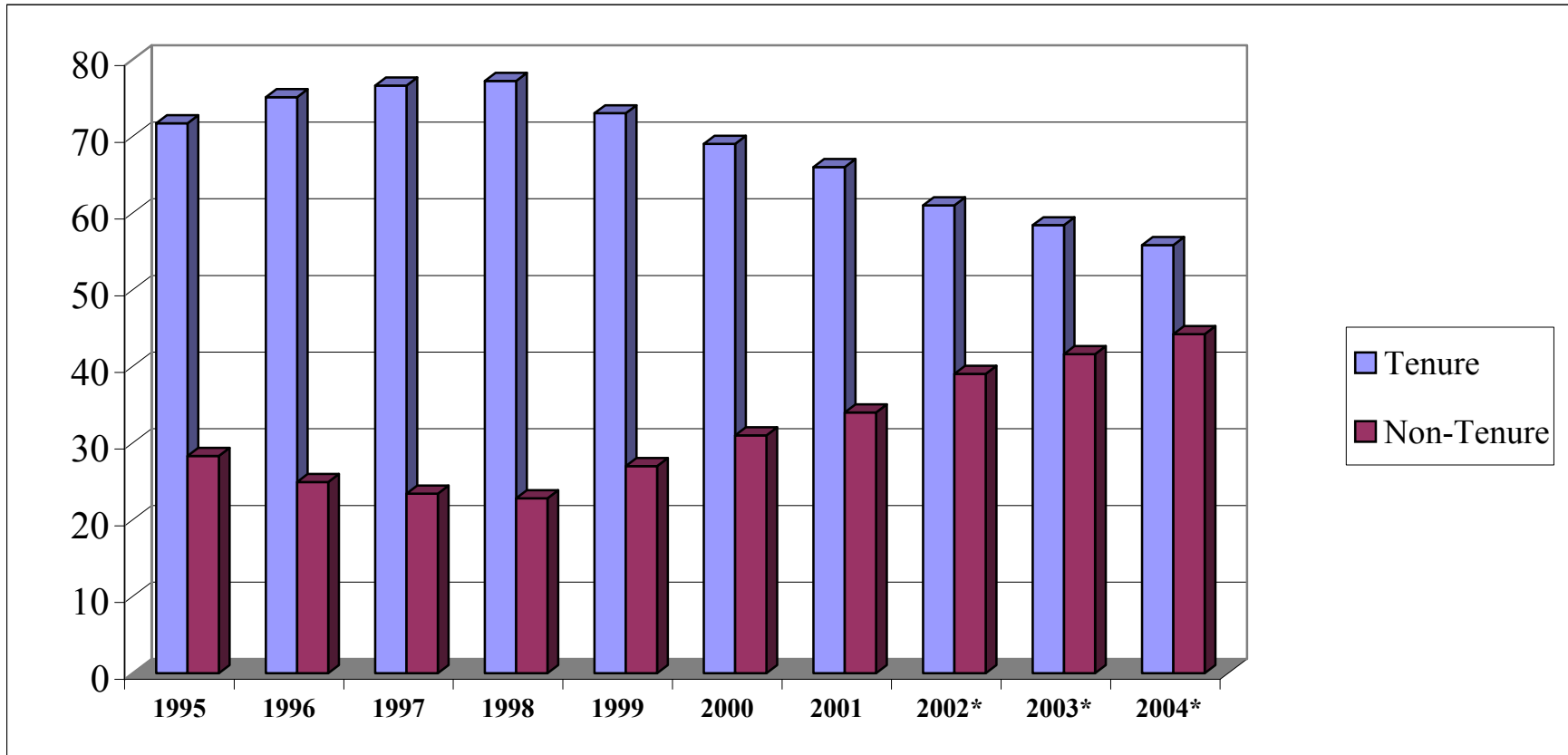
**Full-Time Instructional Faculty  
By Appointment Type, Rank, Tenure Status, and College  
Fall 2004**

	Number of Faculty	Appointment		Academic Rank					Tenure Status		
		9-Month	12-Month	Professor	Associate Professor	Assistant Professor	Instructor	Lecturer	Tenured	On-Track	Non-Tenured
<b>UNIVERSITY TOTAL</b>	<b>1,477</b>	<b>1,133</b>	<b>344</b>	<b>567</b>	<b>354</b>	<b>323</b>	<b>38</b>	<b>195</b>	<b>824</b>	<b>376</b>	<b>277</b>
<b>UNIVERSITY PERCENTAGES</b>	<b>100.0</b>	<b>76.7</b>	<b>23.3</b>	<b>38.4</b>	<b>24.0</b>	<b>21.9</b>	<b>2.6</b>	<b>13.2</b>	<b>55.8</b>	<b>25.5</b>	<b>18.8</b>
Agricultural Sciences & Natural Resources	96	4	92	49	24	20	3	0	66	27	3
Architecture & Design	29	26	3	8	8	5	1	7	14	7	8
Arts & Sciences - Humanities	263	262	1	78	54	46	1	84	128	48	87
Arts & Sciences - Natural Sciences	208	198	10	98	28	44	1	37	121	48	39
Arts & Sciences - Social Sciences	149	148	1	57	31	29	2	30	79	37	33
Business Administration	102	102	0	40	24	18	2	18	60	20	22
Communication & Information	56	54	2	13	20	12	3	8	34	12	10
Education, Health & Human Sciences	133	123	10	56	28	35	5	9	67	48	18
Engineering	136	130	6	70	36	27	2	1	93	35	8
Health Science Center	119	0	119	41	42	33	3	0	67	44	8
Law	31	26	5	17	14	0	0	0	21	10	0
Nursing	38	36	2	5	5	17	11	0	9	11	18
Social Work	26	24	2	7	10	8	1	0	16	8	2
Veterinary Medicine	91	0	91	28	30	29	3	1	49	21	21

SOURCE: IRIS

NOTE: Includes Knoxville, Institute of Agriculture, Veterinary Medicine, Space Institute, and Health Science Center

**Tenured and Non-Tenured Full-Time Instructional Faculty  
Fall 1995-2004  
(As Percentages)**



Source: IRIS

\*Data for 2002 - 2004 include Knoxville, Institute of Agriculture, Veterinary Medicine, Space Institute, and Health Science Center

**Full-Time Instructional Faculty  
By Gender, Highest Degree Held, and Race  
Fall 2004**

	Number of Faculty	GENDER		HIGHEST DEGREE HELD					RACE				
		Male	Female	PhD	Profes- sional	MA	BA	HS	American Indian	Asian	Black	Hispanic	White
<b>UNIVERSITY TOTAL</b>	<b>1,477</b>	<b>955</b>	<b>522</b>	<b>1,060</b>	<b>141</b>	<b>251</b>	<b>24</b>	<b>1</b>	<b>3</b>	<b>110</b>	<b>62</b>	<b>25</b>	<b>1,277</b>
<b>UNIVERSITY PERCENTAGES</b>	<b>100.0</b>	<b>64.7</b>	<b>35.3</b>	<b>71.8</b>	<b>9.5</b>	<b>17.0</b>	<b>1.6</b>	<b>0.1</b>	<b>0.2</b>	<b>7.4</b>	<b>4.2</b>	<b>1.7</b>	<b>86.5</b>
Agricultural Sciences & Natural Resources	96	78	18	90	0	6	0	0	0	7	2	0	87
Architecture & Design	29	20	9	6	0	21	2	0	0	1	0	0	28
Arts & Sciences - Humanities	263	143	120	152	3	99	8	1	0	7	12	13	231
Arts & Sciences - Natural Sciences	208	168	40	183	1	19	5	0	1	25	0	6	176
Arts & Sciences - Social Sciences	149	96	53	139	0	8	2	0	0	9	7	1	132
Business Administration	102	76	26	89	2	10	1	0	0	9	2	1	90
Communication & Information	56	26	30	44	0	9	3	0	0	3	1	1	51
Education, Health & Human Sciences	133	55	78	112	1	19	1	0	1	7	9	0	116
Engineering	136	129	7	131	1	3	1	0	0	29	5	1	101
Health Science Center	119	67	52	45	48	25	1	0	0	7	13	0	99
Law	31	21	10	4	21	6	0	0	0	0	3	0	28
Nursing	38	4	34	19	2	17	0	0	0	1	1	0	36
Social Work	26	15	11	19	1	6	0	0	0	0	5	0	21
Veterinary Medicine	91	57	34	27	61	3	0	0	1	5	2	2	81

SOURCE: IRIS

NOTE: Includes Knoxville, Institute of Agriculture, Veterinary Medicine, Space Institute, and Health Science Center

**Age and Length of Service of Full-Time Instructional Faculty  
Fall 1997-2004  
(As Percentages)**

Age Distribution	Fall 1997	Fall 1998	Fall 1999	Fall 2000	Fall 2001	Fall 2002*	Fall 2003*	Fall 2004*
< 30	1.0	0.6	1.0	1.4	1.6	1.9	1.7	1.6
30-39	15.6	15.5	12.8	13.4	14.2	17.2	17.8	19.6
40-49	31.4	32.0	31.4	31.9	31.2	28.8	27.3	26.3
50-59	32.6	33.6	35.4	34.4	34.7	33.5	33.3	31.7
60-65	14.4	14.0	14.7	14.1	14.1	14.1	15.0	15.2
> 65	5.0	4.2	4.7	4.7	4.3	4.5	5.0	5.6

Length of Service	Fall 1997	Fall 1998	Fall 1999	Fall 2000	Fall 2001	Fall 2002*	Fall 2003*	Fall 2004*
0 - 4	19.1	19.0	16.3	19.2	17.1	31.3	32.3	33.3
5 - 9	17.5	17.5	18.7	18.7	18.6	13.5	13.0	14.6
10 - 14	12.7	13.5	14.6	13.7	15.3	13.2	13.9	13.5
15 - 19	12.5	12.2	11.9	11.4	11.6	10.7	11.0	9.8
>19	38.3	37.8	38.4	37.0	37.4	31.2	29.8	28.8

SOURCE: IRIS

\*Data for 2002 - 2004 include Knoxville, Institute of Agriculture, Veterinary Medicine, Space Institute and Health Science Center

**Distribution of Employees  
By EEO Category  
Fall 2004**

EEO CATEGORY	TOTAL NUMBER	MALE		FEMALE		BLACK		WHITE		TOTAL MINORITY	
		#	%	#	%	#	%	#	%	#	%
<b>UNIVERSITY TOTALS</b>	<b>13,782</b>	<b>6,590</b>	<b>47.82</b>	<b>7,270</b>	<b>52.75</b>	<b>1,540</b>	<b>11.17</b>	<b>11,493</b>	<b>83.39</b>	<b>2,367</b>	<b>17.17</b>
<b>EXECUTIVE/ADMINISTRATIVE/MANAGERIAL</b>	<b>646</b>	<b>357</b>	<b>55.26</b>	<b>289</b>	<b>44.74</b>	<b>51</b>	<b>7.89</b>	<b>586</b>	<b>90.71</b>	<b>60</b>	<b>9.29</b>
Executive	105	73	69.52	32	30.48	8	7.62	96	91.43	9	8.57
Administrative	541	284	52.50	257	47.50	43	7.95	490	90.57	51	9.43
<b>FACULTY</b>	<b>2,952</b>	<b>2,022</b>	<b>68.50</b>	<b>1,008</b>	<b>34.15</b>	<b>112</b>	<b>3.79</b>	<b>2,599</b>	<b>88.04</b>	<b>431</b>	<b>14.60</b>
Professor	954	785	82.29	169	17.71	17	1.78	873	91.51	81	8.49
Associate Professor	738	503	68.16	235	31.84	34	4.61	646	87.53	92	12.47
Assistant Professor	769	473	61.51	296	38.49	37	4.81	589	76.59	180	23.41
Instructor	72	72	100.00	78	108.33	10	13.89	121	168.06	29	40.28
Lecturer	395	176	44.56	219	55.44	14	3.54	352	89.11	43	10.89
Other Faculty	24	13	54.17	11	45.83	0	0.00	18	75.00	6	25.00
<b>PROFESSIONAL</b>	<b>3,220</b>	<b>1,299</b>	<b>40.34</b>	<b>1,921</b>	<b>59.66</b>	<b>238</b>	<b>7.39</b>	<b>2,693</b>	<b>83.63</b>	<b>527</b>	<b>16.37</b>
Professional	3,220	1,299	40.34	1,921	59.66	238	7.39	2,693	83.63	527	16.37
<b>SECRETARIAL/CLERICAL</b>	<b>2,792</b>	<b>297</b>	<b>10.64</b>	<b>2,495</b>	<b>89.36</b>	<b>502</b>	<b>17.98</b>	<b>2,252</b>	<b>80.66</b>	<b>540</b>	<b>19.34</b>
Supervisory	86	37	43.02	49	56.98	13	15.12	71	82.56	15	17.44
Non-Supervisory	2,706	260	9.61	2,446	90.39	489	18.07	2,181	80.60	525	19.40
<b>TECHNICAL/PARAPROFESSIONAL</b>	<b>1,287</b>	<b>492</b>	<b>38.23</b>	<b>795</b>	<b>61.77</b>	<b>182</b>	<b>14.14</b>	<b>997</b>	<b>77.47</b>	<b>290</b>	<b>22.53</b>
Supervisory	32	18	56.25	14	43.75	5	15.63	26	81.25	6	18.75
Non-Supervisory	1,255	474	37.77	781	62.23	177	14.10	971	77.37	284	22.63
<b>SKILLED CRAFTS</b>	<b>502</b>	<b>480</b>	<b>95.62</b>	<b>22</b>	<b>4.38</b>	<b>45</b>	<b>8.96</b>	<b>451</b>	<b>89.84</b>	<b>51</b>	<b>10.16</b>
Supervisory	64	64	100.00	0	0.00	5	7.81	58	90.63	6	9.38
Non-Supervisory	438	416	94.98	22	5.02	40	9.13	393	89.73	45	10.27
<b>SERVICE MAINTENANCE</b>	<b>2,383</b>	<b>1,643</b>	<b>68.95</b>	<b>740</b>	<b>31.05</b>	<b>410</b>	<b>17.21</b>	<b>1,915</b>	<b>80.36</b>	<b>468</b>	<b>19.64</b>
Supervisory	117	72	61.54	45	38.46	38	32.48	79	67.52	38	32.48
Non-Supervisory	2,266	1,571	69.33	695	30.67	372	16.42	1,836	81.02	430	18.98

SOURCE: IRIS

NOTE: Includes Knoxville, Institute of Agriculture, Veterinary Medicine, Space Institute, Health Science Center, and clinical programs

## Chairs of Excellence As of October 2004

CHAIR NAME	CHAIRHOLDER	CHAIR NAME	CHAIRHOLDER
<b>Knoxville</b>		<b>Health Science Center</b>	
Ivan Racheff Chair of Ornamental Horticulture	Dr. Neal Stewart	Harriet S. Van Vleet Chair in Microbiology and Immunology	Dr. Terrence G. Cooper
Ivan Racheff Chair of Materials Science & Engineering	Dr. Peter K. Liaw	Harriet S. Van Vleet Chair in Pharmacology	Dr. Burt M. Sharp
Hodges Chair of English	Dr. Richard J. Finneran	Harriet S. Van Vleet Chair in Biochemistry	Dr. John N. Fain
Condra Chair of Computer Integrated Engineering & Manufacturing	vacant	Harriet S. Van Vleet Chair in Virology	Dr. Martha M. Howe
Condra Chair of Power Electronics Applications	Dr. Bimal K. Bose	E. Eric Muirhead Chair in Pathology	Dr. Lawrence Pfeffer
Goodrich Chair in Transportation	Dr. Thomas Urbanik, III	Crippled Children's Hospital Foundation Chair in Biomedical Engineering	Dr. Frank A. DiBianca
J. Fred Holly Chair in Political Economy	Dr. Paul Davidson	UT Medical Group Chair in Obstetrics and Gynecology	Dr. Frank W. Ling
Bernadotte E. Schmitt Chair of History	Dr. Robert J. Norrell	LeBonheur Chair in Pediatrics	Dr. Russell W. Chesney
Chair of Science, Technology & Medical Writing	Dr. Mark Littmann	LeBonheur Chair in Pediatrics (Second Chair)	vacant
Forrest & Patsy Shumway Chair in Romance Language	Dr. Patrick Brady	Plough Foundation Chair in Pediatrics	Dr. Bruce S. Alpert
Pilot Chair in Management	Dr. Lawrence R. James	J.R. Hyde Chair in Rehabilitation Engineering	vacant
Clayton Homes Chair in Finance	Dr. James Wansley	Thomas A. Gerwin Chair in Physiology	Dr. Leonard R. Johnson
College of Business Administration Chair of Policy Studies	Dr. John T. Mentzer	First Tennessee Chair in Pediatric Clinical Pharmacy	Dr. William E. Evans
Bernard Blasingame Chair in Agricultural Policy	Dr. Daryll E. Ray	William & Dorothy Dunavant Chair in Pediatrics	Dr. Robert Williams
Willis Lincoln Chair in Physics	Dr. John Quinn	Federal Express Chair in Pediatrics	Dr. Mary Ellen Conley
Nancy Gore Hunger Chair in Environmental Studies	Dr. Daniel Simberloff	Semmes-Murphey Chair in Neurology	Dr. William A. Pulsinelli
<b>Space Institute</b>		Maury W. Bronstein Chair in Cardiovascular Physiology	Dr. Aviv Isaak Hassid
Edward J. and Carolyn P. Boling Chair of Space Propulsion	Dr. Gary A. Flandro	Goodman Chair in Medicine	Dr. Andrew H. Kang
H. H. Arnold Chair of Computational Mechanics	Dr. Charles L. Merkle	Mark S. Soloway Chair of Excellence in Urology	Dr. Mitchell S. Steiner

SOURCE: Office of the Vice President for Research

**Unrestricted Expenditures and Transfers  
By Budgetary Function  
With Percent Distribution of Expenditures  
FY 2000-2005**

	ACTUAL					BUDGET
	FY 2000	FY 2001	FY 2002*	FY 2003*	FY 2004*	FY 2005*
<b>TOTAL UNRESTRICTED CURRENT FUNDS EXPENDITURES &amp; TRANSFERS</b>	<b>394,258,034</b>	<b>421,966,402</b>	<b>794,335,522</b>	<b>773,589,156</b>	<b>775,865,473</b>	<b>805,228,394</b>
<b>TOTAL EDUCATION &amp; GENERAL EXPENDITURES</b>	<b>279,804,514</b>	<b>311,174,878</b>	<b>607,338,685</b>	<b>651,768,973</b>	<b>660,901,900</b>	<b>687,822,952</b>
<b>TRANSFERS (IN)/OUT</b>	<b>13,721,676</b>	<b>9,428,665</b>	<b>18,647,610</b>	<b>(14,046,337)</b>	<b>(6,954,337)</b>	<b>(3,949,347)</b>
<b>TOTAL EDUCATION &amp; GENERAL AUXILIARY ENTERPRISES FUNDS</b>	<b>293,526,190</b>	<b>320,603,543</b>	<b>625,986,295</b>	<b>637,722,636</b>	<b>653,947,563</b>	<b>683,873,605</b>
<b>WILLIAM F. BOWLD HOSPITAL</b>	<b>100,731,844</b>	<b>101,362,859</b>	<b>113,550,871</b>	<b>119,255,869</b>	<b>119,841,136</b>	<b>121,354,789</b>
			<b>54,798,356</b>	<b>16,610,651</b>	<b>2,076,774</b>	
<b>EDUCATION &amp; GENERAL</b>						
Instruction	137,309,553	151,998,747	292,370,372	306,782,366	304,398,198	325,324,381
Research	10,884,539	16,088,550	50,393,860	53,731,090	53,872,734	55,988,298
Public Service	6,388,619	8,447,752	44,586,464	47,301,086	51,836,967	54,024,229
Academic Support	39,122,071	38,697,879	64,826,315	74,024,791	72,296,395	75,469,091
Student Services	25,921,129	27,618,852	31,308,986	35,259,383	40,197,851	37,858,892
Institutional Support	18,614,590	18,990,133	46,816,694	49,367,043	48,252,159	46,338,447
Operation and Maintenance of Physical Plant	27,917,929	34,650,354	54,797,869	59,990,303	64,547,886	62,504,827
Scholarship/Fellowship	13,646,083	14,682,611	22,238,125	25,312,911	25,499,710	30,314,787
<b>EXPENSES AS A PERCENT OF TOTAL EDUCATION &amp; GENERAL</b>						
Instruction	46.8%	47.4%	46.7%	48.1%	46.5%	47.6%
Research	3.7%	5.0%	8.1%	8.4%	8.2%	8.2%
Public Service	2.2%	2.6%	7.1%	7.4%	7.9%	7.9%
Academic Support	13.3%	12.1%	10.4%	11.6%	11.1%	11.0%
Student Services	8.8%	8.6%	5.0%	5.5%	6.1%	5.5%
Institutional Support	6.3%	5.9%	7.5%	7.7%	7.4%	6.8%
Operation & Maintenance of Physical Plant	9.5%	10.8%	8.8%	9.4%	9.9%	9.1%
Scholarship/Fellowship	4.6%	4.6%	3.6%	4.0%	3.9%	4.4%

SOURCE: Office of the Director of Finance

\*Data for 2002 - 2004 include Knoxville, Institute of Agriculture, Veterinary Medicine, Space Institute and Health Science Center



**Unrestricted Current Revenue  
By Budgetary Function and Revenue Dollars  
Per Full-Time Equivalent Student  
FY 2000-2005**

	ACTUAL					BUDGET
	FY 2000	FY 2001	FY 2002*	FY 2003*	FY 2004*	FY 2005*
<b>TOTAL REVENUE</b>	<b>388,858,212</b>	<b>421,966,402</b>	<b>794,335,523</b>	<b>773,589,153</b>	<b>769,954,584</b>	<b>798,588,653</b>
<b>TOTAL EDUCATION &amp; GENERAL REVENUE</b>	<b>293,526,189</b>	<b>320,603,544</b>	<b>625,986,296</b>	<b>637,722,633</b>	<b>651,853,584</b>	<b>677,265,535</b>
<b>TOTAL AUXILIARY REVENUE</b>	<b>95,332,023</b>	<b>101,362,858</b>	<b>113,550,871</b>	<b>119,255,869</b>	<b>119,001,026</b>	<b>121,323,118</b>
<b>TOTAL WILLIAM F. BOWLD HOSPITAL</b>			<b>54,798,356</b>	<b>16,610,651</b>	<b>(900,026)</b>	
<b>EDUCATION &amp; GENERAL REVENUE</b>						
Tuition and Fees	117,139,551	127,214,919	166,396,798	173,834,646	184,826,672	197,212,019
Federal Appropriations			13,760,810	11,839,020	15,409,299	13,672,010
State Appropriations	150,779,000	164,044,500	336,449,800	339,902,200	337,115,600	356,795,500
Local Appropriations			3,871,849	3,889,156	3,946,132	4,029,504
Federal Gifts, Grants and Contracts	8,618,313	8,361,816	40,476,127	42,233,070	42,848,219	40,781,008
State Gifts, Grants and Contracts	2,302,641	3,389,705	10,056,703	9,766,464	9,286,616	9,126,973
Local Gifts, Grants and Contracts	48,734	38,803	8,485,231	8,337,407	5,324,080	6,340,457
Private Gifts, Grants and Contracts	2,068,432	1,956,480	3,417,503	3,674,624	3,945,089	3,875,849
Gifts		649,719	701,090	619,391	739,723	710,500
Endowment Income	32,351	32,279	31,726	30,378	27,540	42,000
Sale and Service of Educational Activities	5,588,645	5,671,089	34,248,144	34,617,517	35,910,690	34,512,964
Other Sources	6,948,522	9,244,234	8,090,515	8,978,760	12,473,924	10,166,751
<b>REVENUE DOLLARS PER FULL-TIME EQUIVALENT (FTE) STUDENT</b>						
Revenue dollars per FTE Student	17,069	18,522	34,264	30,780	30,556	31,684
Education and General Revenue dollars per FTE Student	12,884	14,073	27,002	25,374	25,869	26,870
State Appropriation dollars per FTE Student	6,618	7,201	14,513	13,524	13,379	14,156
Number of FTE Students	22,782	22,782	23,183	25,133	25,198	25,205

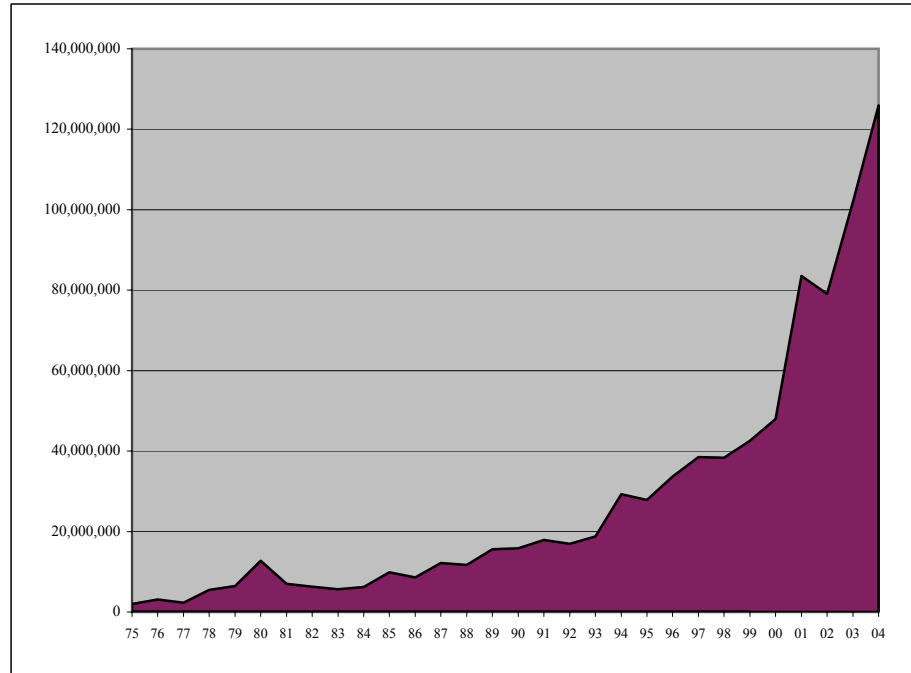
SOURCE: Office of the Director of Finance

NOTES: Endowment Income only includes income from Land Grant Endowment. Income from endowments created by private gifts are credited to the University of Tennessee System. Beginning in FY 2001, Gifts are reported separately from Grants and Contracts.

\*Data for 2002 - 2005 include Knoxville, Institute of Agriculture, Veterinary Medicine, Space Institute and Health Science Center

## Number of Contributors and Gifts FY 1977-2004

FISCAL YEAR	NUMBER OF DONORS	AMOUNT RAISED	AVERAGE GIFT
1976-77	N/A	2,318,564	N/A
1977-78	7,395	5,504,777	744
1978-79	7,754	6,434,738	830
1979-80	7,392	12,716,283	1,720
1980-81	8,224	6,997,761	851
1981-82	8,879	6,279,800	707
1982-83	8,926	5,608,056	628
1983-84	9,304	6,196,738	666
1984-85	10,364	9,826,048	948
1985-86	14,721	8,597,822	584
1986-87	19,947	12,133,924	608
1987-88	21,201	11,727,440	553
1988-89	21,227	15,581,262	734
1989-90	21,815	15,837,319	726
1990-91	23,359	17,876,619	765
1991-92	26,661	16,913,594	616
1992-93	27,701	18,807,636	679
1993-94	28,562	29,303,723	1,026
1994-95	31,621	27,861,586	881
1995-96	33,054	33,621,901	1,017
1996-97	33,026	38,536,237	1,167
1997-98	33,911	38,319,362	1,130
1998-99	37,117	42,583,818	1,147
1999-00	35,069	48,004,161	1,369
2000-01	46,546	83,519,546	1,794
2001-02	43,625	79,075,888	1,813
2002-03	45,142	102,015,719	2,260
2003-04	46,515	125,915,119	2,707



SOURCE: Development Office

**Average Salaries of Full-Time Instructional Faculty  
By College and Rank  
FY 2004-2005**

COLLEGE / SCHOOL	ALL RANKS	PROFESSOR	ASSOCIATE PROFESSOR	ASSISTANT PROFESSOR	INSTRUCTOR	LECTURER
<b>ALL COLLEGES</b>	<b>70,027</b>	<b>91,192</b>	<b>68,930</b>	<b>58,206</b>	<b>43,343</b>	<b>35,261</b>
Agricultural Science and Natural Resources	70,319	82,764	62,570	53,792	39,237	
Architecture & Design	64,014	83,742	68,030	57,893	*	44,908
Arts and Sciences - Humanities	53,057	76,994	57,875	47,383	*	30,944
Arts and Sciences - Natural Sciences	73,323	94,399	73,662	59,613	*	33,934
Arts and Sciences - Social Sciences	60,304	80,172	60,971	49,804	*	33,135
Business Administration	94,712	120,035	88,918	86,595	*	56,868
Communication & Information	60,621	87,197	63,020	50,110	47,545	32,111
Education, Health & Human Sciences	66,446	83,614	61,074	54,144	35,382	41,432
Engineering	84,846	97,939	74,416	69,338	*	*
Health Science Center	75,379	91,019	70,202	65,097	47,232	
Law	112,391	129,932	91,091			
Nursing	54,333	80,761	65,781	53,939	37,725	
Social Work	70,803	104,566	64,085	52,199	*	
Veterinary Medicine	75,176	93,013	76,681	61,321	38,981	*

SOURCE: IRIS

\*If less than three individuals, salaries are not reported

NOTE: Includes Knoxville, Institute of Agriculture, Veterinary Medicine, Space Institute, and Health Science Center

**Median Graduate Assistant Stipends  
FY 1984-2005**

FY	TOTAL ASSISTANTSHIPS		GRADUATE TEACHING ASSOCIATE		GRADUATE TEACHING ASSISTANT		GRADUATE RESEARCH ASSISTANT		GRADUATE ASSISTANT	
	Number of Students	Median Stipend	Number of Students	Median Stipend	Number of Students	Median Stipend	Number of Students	Median Stipend	Number of Students	Median Stipend
1983-84	1,177	4,801	5	5,073	599	4,908	199	6,340	374	3,976
1984-85	1,251	5,497	3	7,674	642	5,723	181	7,068	425	4,574
1985-86	1,343	5,778	2	6,399	680	6,062	198	7,323	463	4,886
1986-87	1,432	6,281	6	5,856	682	6,497	265	6,871	479	5,130
1987-88	1,468	6,535	178	6,846	541	6,697	309	6,953	440	5,335
1988-89	1,581	6,773	193	7,120	553	6,847	279	6,891	556	5,870
1989-90	1,659	7,095	212	7,405	571	7,121	351	7,821	525	5,884
1990-91	1,755	7,620	227	8,265	550	7,651	407	8,259	571	6,618
1991-92	1,727	7,697	247	7,701	542	7,721	440	8,180	498	6,577
1992-93	1,809	7,712	247	7,701	584	7,719	424	8,834	554	6,577
1993-94	1,881	8,077	276	8,247	606	8,005	445	9,652	554	7,041
1994-95	1,928	8,805	336	8,923	585	9,006	426	10,144	581	7,470
1995-96	1,855	8,666	317	8,922	558	8,624	388	9,829	592	7,323
1996-97	1,786	8,926	320	9,230	554	9,386	388	10,110	524	7,282
1997-98	1,731	9,028	307	9,231	557	9,434	354	10,161	513	7,455
1998-99	1,777	9,462	329	9,686	550	9,045	364	11,119	534	7,438
1999-00	1,780	9,956	316	10,074	591	10,196	347	11,583	526	7,730
2000-01	1,762	10,347	285	10,299	584	10,425	338	12,191	555	8,027
2001-02	1,879	11,979	290	12,001	622	11,823	355	12,948	612	8,366
2002-03	2,113	11,993	298	12,005	636	11,989	511	12,577	668	10,010
2003-04	2,217	12,224	306	12,310	681	12,240	573	13,016	657	9,791
2004-05	2,211	12,576	323	12,638	697	12,950	604	13,410	587	9,816

SOURCE: IRIS

NOTE: Stipends are equated to a half-time (20-hour week) academic year salary

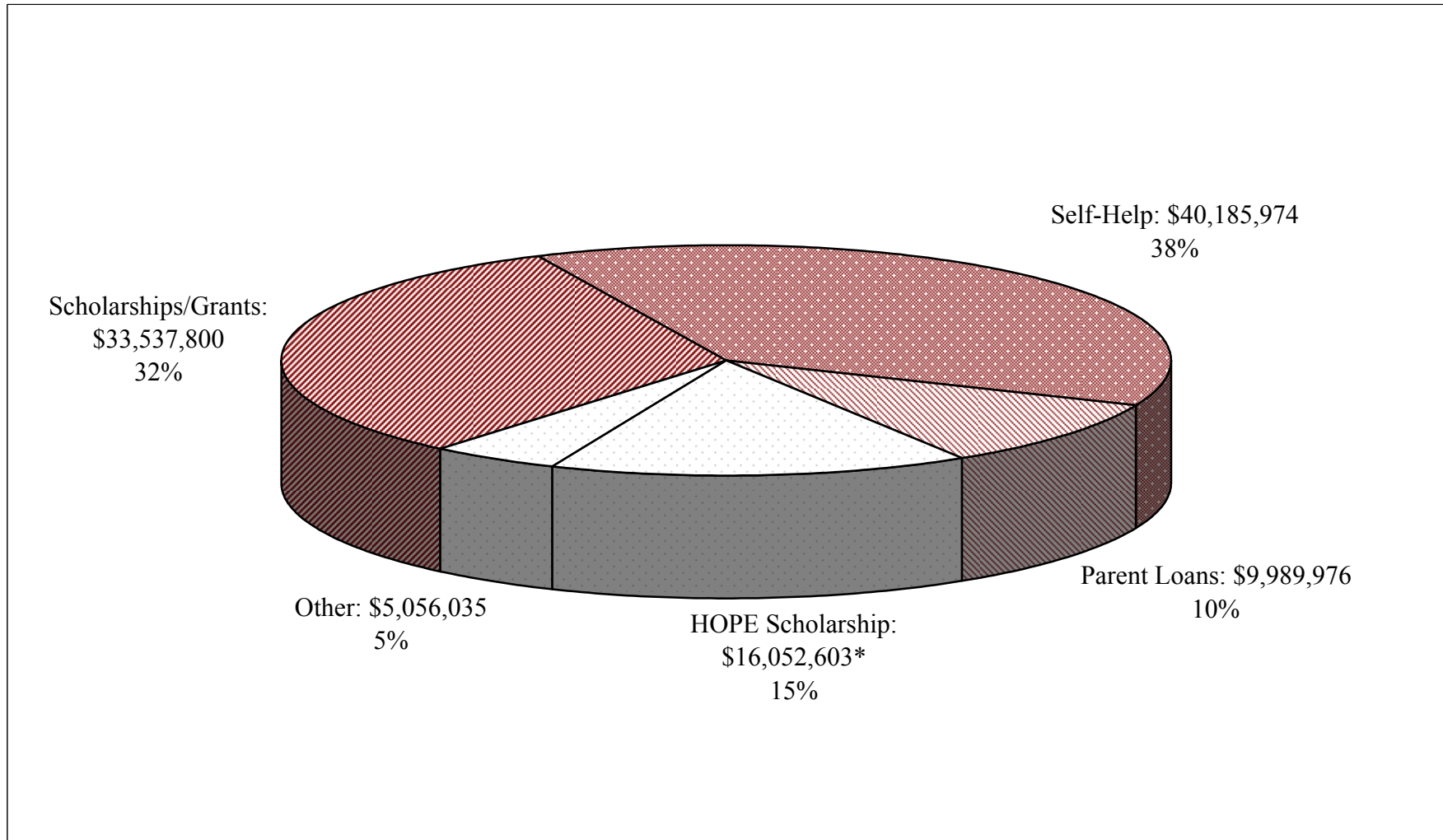
**Student Tuition  
By Level  
Academic Year 2004-2005**

	IN-STATE	OUT-OF-STATE
<b>KNOXVILLE CAMPUS</b>		
UNDERGRADUATE	4,748	14,528
GRADUATE	5,376	15,156
LAW	8,396	21,384
VETERINARY MEDICINE	10,176	28,396
<b>HEALTH SCIENCE CENTER</b>		
<b>ALLIED HEALTH</b>		
Cytotechnology	7,076	19,562
Dental Hygiene - First Year	5,767	15,117
Dental Hygiene - Second Year	5,567	14,917
Health Information Management	7,094	19,172
Medical Technology - First Year	7,646	21,134
Medical Technology - Second Year	5,441	14,433
Occupational Therapy - First Year	4,406	9,080
Occupational Therapy - Second Year	5,553	14,913
Occupational Therapy - Third Year	2,094	5,007
Physical Therapy - First Year	8,515	17,863
Physical Therapy - Second Year	8,315	17,663
Physical Therapy - Third Year	8,315	17,663
<b>COLLEGE OF NURSING</b>		
First Year	9,113	19,273
Returning Student	8,913	19,073
December Graduate	4,470	9,550

	IN-STATE	OUT-OF-STATE
<b>HEALTH SCIENCE CENTER (Continued)</b>		
<b>GRADUATE HEALTH SCIENCES</b>		
First Year	8,126	20,602
Returning Student	7,926	20,402
June Graduate	7,926	20,402
<b>COLLEGE OF DENTISTRY</b>		
First Year	15,893	34,053
Second Year	15,670	33,830
Third Year	15,670	33,830
Fourth Year	15,670	33,830
<b>COLLEGE OF MEDICINE</b>		
First Year	18,761	35,153
Second Year	18,079	34,471
Third Year	18,026	34,418
Fourth Year	18,026	34,418
<b>COLLEGE OF PHARMACY</b>		
First Year	11,842	23,978
Second Year	11,669	23,805
Third Year	11,669	23,805
Fourth Year	11,669	23,805
<b>SPACE INSTITUTE</b>		
GRADUATE	5,376	14,295

SOURCE: Office of Financial Aid

## Need-Based Financial Aid Academic Year 2004-2005



SOURCE: Office of Financial Aid

\*New for FY 2004-2005

**Number and Percent of Occupancy for Student Residence Halls  
And Married/Graduate Student Housing  
Fall 2004**

<b>STUDENT RESIDENCE HALLS</b>				
<b>HALL NAME</b>	<b>NUMBER OF ROOMS</b>	<b>NUMBER OF BEDS</b>	<b>OCCUPANCY AS OF 9-24-04</b>	<b>PERCENT OCCUPANCY</b>
<b>TOTAL</b>	<b>3,593</b>	<b>7,337</b>	<b>6,574</b>	<b>90%</b>
Apartment Residence Hall	306	1,150	1,027	89%
Clement Hall	353	703	638	91%
Gibbs Hall	116	218	181	83%
Greve Hall	199	381	287	75%
Hess Hall	512	1,026	885	86%
Humes Hall	260	518	511	99%
Massey Hall	292	584	421	72%
Melrose Hall	224	191	184	96%
Morrill Hall	379	757	688	91%
North Carrick Hall	248	494	488	99%
Reese Hall	260	512	504	98%
South Carrick Hall	271	530	521	98%
Strong Hall	173	273	239	88%

<b>MARRIED/GRADUATE STUDENT HOUSING</b>				
<b>APARTMENT COMPLEX</b>	<b>NUMBER OF BUILDINGS</b>	<b>NUMBER OF APARTMENTS</b>	<b>OCCUPANCY AS OF 9-24-04</b>	<b>PERCENT OCCUPANCY</b>
<b>TOTAL</b>	<b>65</b>	<b>1,669</b>	<b>1,233</b>	<b>74%</b>
Golf Range Apartments	25	417	272	65%
Laurel Apartments	1	316	281	89%
Kingston Apartments	1	233	188	81%
Sutherland Apartments	13	417	321	77%
Goodman Family Residence Hall (Memphis)	1	192	171	89%

SOURCE: Department of University Housing

**Main Library  
Holdings and Expenditures  
FY 2000-2004**

CATALOGED MATERIALS	FY 99/00	FY 00/01	FY 01/02	FY 02/03	FY 03/04	FY 00-04 % CHANGE
<b>VOLUMES</b>	2,063,284	2,120,518	2,152,555	2,288,183	2,319,379	12.4
<b>TITLES</b>	1,121,600	1,157,773	1,182,995	1,231,250	1,258,773	12.2
<b>NON-PRINT MATERIALS</b>						
Audio	27,621	28,328	28,525	30,048	26,638	(3.6)
Cartographic	4,110	4,251	4,339	6,455	6,778	64.9
Film/Video	8,861	9,527	9,719	10,905	11,290	27.4
Graphic	133,728	130,562	124,153	125,820	123,252	(7.8)
Microform	2,395,224	2,418,310	2,476,362	2,566,626	2,609,511	8.9
Computer File/CD-ROM	1,221	1,290	1,431	1,309	1,508	23.5
<b>PERIODICALS AND OTHER SERIALS RECEIVED</b>						
Number of Titles	11,902	13,309	14,073	14,284	15,286	28.4
<b>EXPENDITURES</b>	11,898,192	11,790,275	12,302,454	15,605,403	15,361,265	29.1

SOURCE: Office of the Dean of Libraries



**Law Library  
Holdings and Expenditures  
FY 2000-2004**

<b>CATALOGED MATERIALS</b>	<b>FY 99/00</b>	<b>FY 00/01</b>	<b>FY 01/02</b>	<b>FY 02/03</b>	<b>FY 03/04</b>	<b>FY 00-04 % CHANGE</b>
<b>VOLUMES AND EQUIVALENTS</b>	<b>483,372</b>	<b>498,656</b>	<b>515,524</b>	<b>529,720</b>	<b>544,317</b>	<b>12.6</b>
<b>TITLES</b>	<b>95,337</b>	<b>97,308</b>	<b>98,975</b>	<b>104,458</b>	<b>109,863</b>	<b>15.2</b>
<b>NON-PRINT MATERIALS</b>						
Non-print Titles	39,583	39,618	39,639	40,555	42,210	6.6
Microfilm Reels	1,088	1,104	1,134	1,148	1,162	6.8
Microfiche Units	1,182,566	1,216,264	1,254,502	1,290,236	1,333,062	12.7
Microform Equivalent Volumes	202,354	208,051	214,754	221	227,984	12.7
<b>SERIALS</b>						
Serial Titles	5,726	5,726	6,174	6,274	5,909	3.2
Number of Serial Subscriptions	6,363	6,363	6,847	6,981	6,701	5.3
<b>EXPENDITURES</b>	<b>2,130,916</b>	<b>2,204,143</b>	<b>2,318,174</b>	<b>2,488,537</b>	<b>2,508,020</b>	<b>17.7</b>

SOURCE: College of Law Library

**Health Sciences Library and Biocommunications Center  
Holdings and Expenditures  
FY 2000-2004**

<b>CATALOGED MATERIALS</b>	<b>FY 99/00</b>	<b>FY 00/01</b>	<b>FY 01/02</b>	<b>FY 02/03</b>	<b>FY 03/04</b>	<b>FY 00-04 % CHANGE</b>
<b>VOLUMES</b>	<b>185,204</b>	<b>185,860</b>	<b>187,349</b>	<b>188,319</b>	<b>194,324</b>	<b>4.9</b>
<b>TITLES</b>	<b>39,990</b>	<b>38,812</b>	<b>39,535</b>	<b>39,850</b>	<b>40,406</b>	<b>1.0</b>
<b>NON-PRINT MATERIALS</b>						
Audiovisual	2,385	2,395	2,438	2,054	2,057	(14.1)
Microform	105	105	105	105	105	0.0
Computer File/CD-ROM	16	16	16	91	71	343.8
<b>PERIODICALS RECEIVED</b>						
Number of Titles	1,349	1,458	1,460	1,488	1,254	(7.0)
<b>EXPENDITURES</b>	<b>2,285,537</b>	<b>2,209,208</b>	<b>2,125,305</b>	<b>2,577,303</b>	<b>2,659,503</b>	<b>16.4</b>

SOURCE: Health Sciences Library and Biocommunications Center

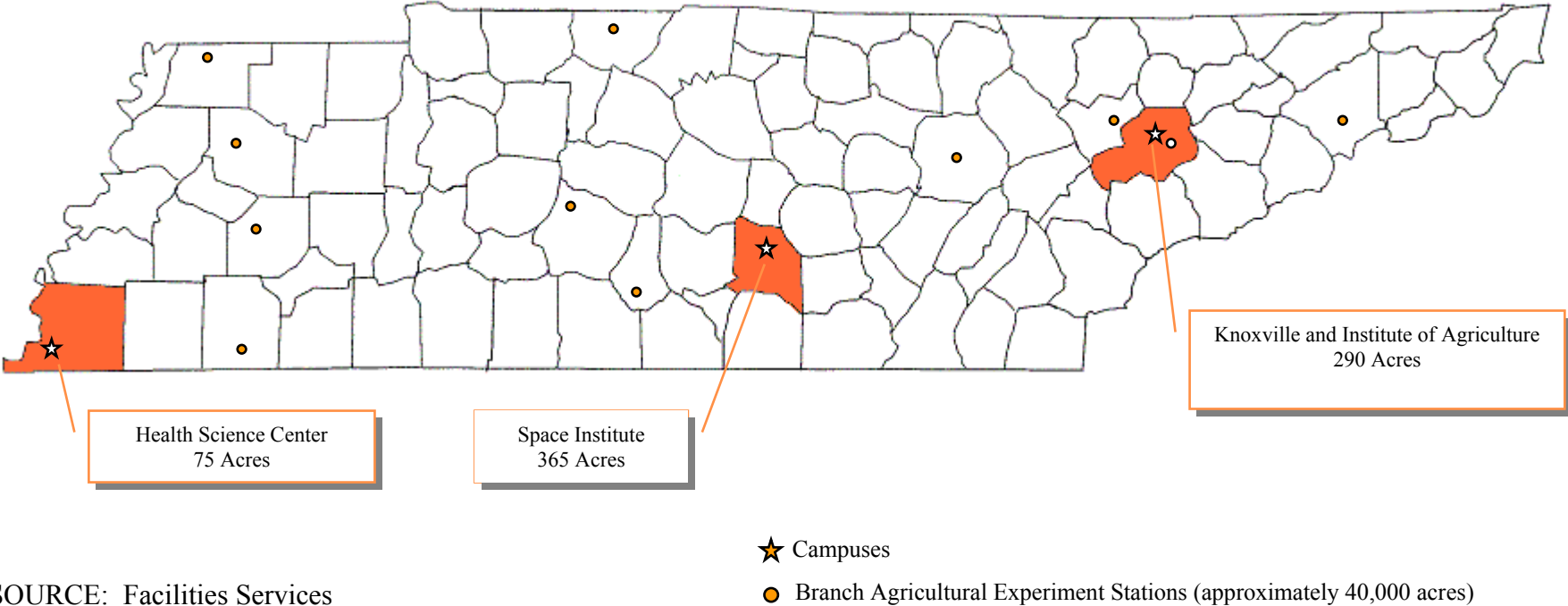
NOTE: Percentages for non-print materials uses first year available as base year

**Space Institute Library  
Holdings and Expenditures  
FY 2001-2004**

CATALOGED MATERIALS	FY 00/01	FY 01/02	FY 02/03	FY 03/04	FY 01-04 % CHANGE
<b>VOLUMES</b>	<b>75,224</b>	<b>75,788</b>	<b>76,075</b>	<b>76,187</b>	<b>1.3</b>
<b>COLLECTIONS</b>					
Bound Volumes	23,927	24,380	24,556	24,674	3.1
Technical Reports	51,327	51,407	51,463	51,488	0.3
<b>NON-PRINT MATERIALS</b>					
Film/Video	79	79	79	79	0.0
Microform	209,480	211,865	213,552	213,552	1.9
Computer File	64	64	83	83	29.7
Other Audio/Visual	143	154	154	154	7.7
<b>PERIODICALS AND OTHER SERIALS RECEIVED</b>					
Number of Titles	214	186	154	148	(30.8)
<b>EXPENDITURES</b>	<b>233,772</b>	<b>215,181</b>	<b>197,348</b>	<b>211,449</b>	<b>(9.5)</b>

SOURCE: Office of the Dean of Libraries

# University of Tennessee Facilities and Acreage Fall 2004



SOURCE: Facilities Services

**One Year Retention Rates  
First-Time Full-Time Freshmen  
Fall Terms 1983-2003**

Enrollment Year	Total		Male		Female		Black		White		Other	
	Number	Rate	Number	Rate	Number	Rate	Number	Rate	Number	Rate	Number	Rate
1983	3,150	77.9	1,631	77.9	1,519	77.9	184	75.5	2,874	78.1	92	75.0
1984	3,195	78.0	1,607	77.5	1,588	78.5	175	70.9	2,941	78.4	79	78.5
1985	3,299	78.7	1,694	77.9	1,605	79.6	191	75.4	3,055	79.0	53	77.4
1986	3,503	77.5	1,811	76.9	1,692	78.1	205	78.5	3,246	77.4	52	80.8
1987	3,683	78.6	1,886	77.7	1,797	79.5	181	74.0	3,437	78.8	65	78.5
1988	3,708	78.9	1,959	76.7	1,749	81.3	192	73.4	3,462	79.2	54	74.1
1989	3,296	80.0	1,696	79.4	1,600	80.7	185	80.5	3,045	80.1	66	77.3
1990	3,336	79.5	1,706	78.5	1,630	80.6	239	81.2	3,006	79.1	91	87.9
1991	2,986	81.5	1,540	80.7	1,446	82.4	217	80.7	2,668	81.4	101	86.1
1992	3,136	80.0	1,584	79.3	1,552	80.9	209	78.5	2,815	80.0	112	83.9
1993	2,799	78.6	1,391	77.3	1,408	79.8	175	78.9	2,521	78.4	103	81.6
1994	2,850	75.9	1,470	74.5	1,380	77.4	144	77.1	2,604	75.8	102	75.5
1995	3,427	76.8	1,639	74.8	1,788	78.6	153	83.7	3,141	76.2	133	84.2
1996	3,637	76.7	1,795	74.4	1,842	78.9	192	79.7	3,305	76.4	140	78.6
1997	3,823	78.1	1,882	76.7	1,941	79.4	243	84.0	3,408	77.8	172	76.2
1998	3,747	78.7	1,791	76.7	1,956	80.6	273	78.0	3,336	79.0	138	73.2
1999	4,099	75.4	1,931	71.7	2,168	78.7	328	72.6	3,607	75.8	164	74.4
2000	3,794	78.3	1,840	76.3	1,954	80.3	268	81.5	3,364	77.7	162	85.2
2001	3,898	75.5	1,914	72.1	1,984	78.8	190	75.1	3,405	75.7	203	69.0
2002	3,638	77.8	1,761	76.7	1,877	78.8	321	83.5	3,115	77.5	202	73.3
2003	3,529	78.0	1,721	76.7	1,808	79.3	319	80.3	3,038	77.6	172	82.0

SOURCE: Student Information System

**Four Year Graduation Rates  
First-Time Full-Time Freshmen  
Fall Terms 1983-2000**

Enrollment Year	Total		Male		Female		Black		White		Other	
	Number	Rate	Number	Rate	Number	Rate	Number	Rate	Number	Rate	Number	Rate
1983	3,150	23.0	1,631	17.7	1,519	28.8	184	10.9	2,874	23.8	92	25.0
1984	3,195	24.9	1,607	19.7	1,588	30.1	175	9.7	2,941	25.6	79	30.4
1985	3,299	24.1	1,694	19.7	1,605	28.8	191	11.0	3,055	24.8	53	30.2
1986	3,503	22.2	1,811	17.7	1,692	27.0	205	8.8	3,246	23.0	52	26.9
1987	3,683	21.4	1,886	14.5	1,797	28.6	181	7.7	3,437	22.0	65	26.2
1988	3,708	22.8	1,959	16.5	1,749	29.8	192	10.4	3,462	23.5	54	22.2
1989	3,296	24.7	1,696	19.6	1,600	30.1	185	8.7	3,045	25.6	66	30.3
1990	3,336	23.6	1,706	17.4	1,630	30.2	239	12.1	3,006	24.4	91	27.5
1991	2,986	25.1	1,540	17.3	1,446	33.5	217	21.2	2,668	25.1	101	34.7
1992	3,136	22.6	1,584	16.8	1,552	28.6	209	13.9	2,815	23.2	112	24.1
1993	2,799	24.1	1,391	17.3	1,408	30.8	175	15.4	2,521	24.7	103	23.3
1994	2,850	23.6	1,470	15.5	1,380	32.3	144	12.5	2,604	24.4	102	18.6
1995	3,427	26.8	1,639	20.2	1,788	32.9	153	19.0	3,141	27.0	133	31.6
1996	3,637	28.4	1,795	19.9	1,842	36.8	192	17.7	3,305	29.0	140	30.7
1997	3,823	27.5	1,882	19.3	1,941	35.4	243	20.6	3,408	28.0	172	26.2
1998	3,747	26.7	1,791	16.7	1,956	35.9	273	18.7	3,336	27.6	138	21.7
1999	4,099	28.7	1,931	18.9	2,168	37.4	328	24.7	3,607	29.1	164	26.2
2000	3,794	30.6	1,840	22.3	1,954	38.4	268	28.0	3,364	30.5	162	37.0

SOURCE: Student Information System and Academic Inventory

**Five Year Graduation Rates  
First-Time Full-Time Freshmen  
Fall Terms 1983-1999**

Enrollment Year	Total		Male		Female		Black		White		Other	
	Number	Rate	Number	Rate	Number	Rate	Number	Rate	Number	Rate	Number	Rate
1983	3,150	48.5	1,631	47.0	1,519	50.2	184	34.8	2,874	49.4	92	48.9
1984	3,195	45.6	1,607	42.1	1,588	49.1	175	30.3	2,941	46.3	79	50.6
1985	3,299	47.5	1,694	45.5	1,605	49.6	191	28.3	3,055	48.7	53	49.1
1986	3,503	45.0	1,811	41.7	1,692	48.5	205	32.2	3,246	45.9	52	40.4
1987	3,683	45.3	1,886	41.1	1,797	49.6	181	30.9	3,437	45.9	65	53.8
1988	3,708	49.1	1,959	44.1	1,749	54.7	192	36.5	3,462	49.8	54	46.3
1989	3,296	48.4	1,696	44.7	1,600	52.3	185	34.1	3,045	49.2	66	53.0
1990	3,336	48.5	1,706	44.1	1,630	53.1	239	33.9	3,006	49.5	91	55.0
1991	2,986	48.9	1,540	42.3	1,446	56.0	217	39.2	2,668	49.7	101	49.5
1992	3,136	48.4	1,584	44.6	1,552	52.3	209	34.9	2,815	49.4	112	48.2
1993	2,799	49.7	1,391	45.9	1,408	53.4	175	35.4	2,521	50.6	103	51.5
1994	2,850	50.7	1,470	44.6	1,380	54.6	144	36.1	2,604	50.7	102	34.3
1995	3,427	52.4	1,639	46.3	1,788	58.1	153	44.4	3,141	52.6	133	58.6
1996	3,637	51.8	1,795	45.7	1,842	57.8	192	39.1	3,305	52.4	140	55.0
1997	3,823	53.1	1,882	47.0	1,941	59.1	243	47.7	3,408	53.8	172	47.1
1998	3,747	53.3	1,491	46.0	1,956	60.0	273	45.4	3,336	54.0	138	52.2
1999	4,099	52.1	1,931	45.9	2,168	57.7	328	47.9	3,607	52.5	167	52.4

SOURCE: Student Information System and Academic Inventory

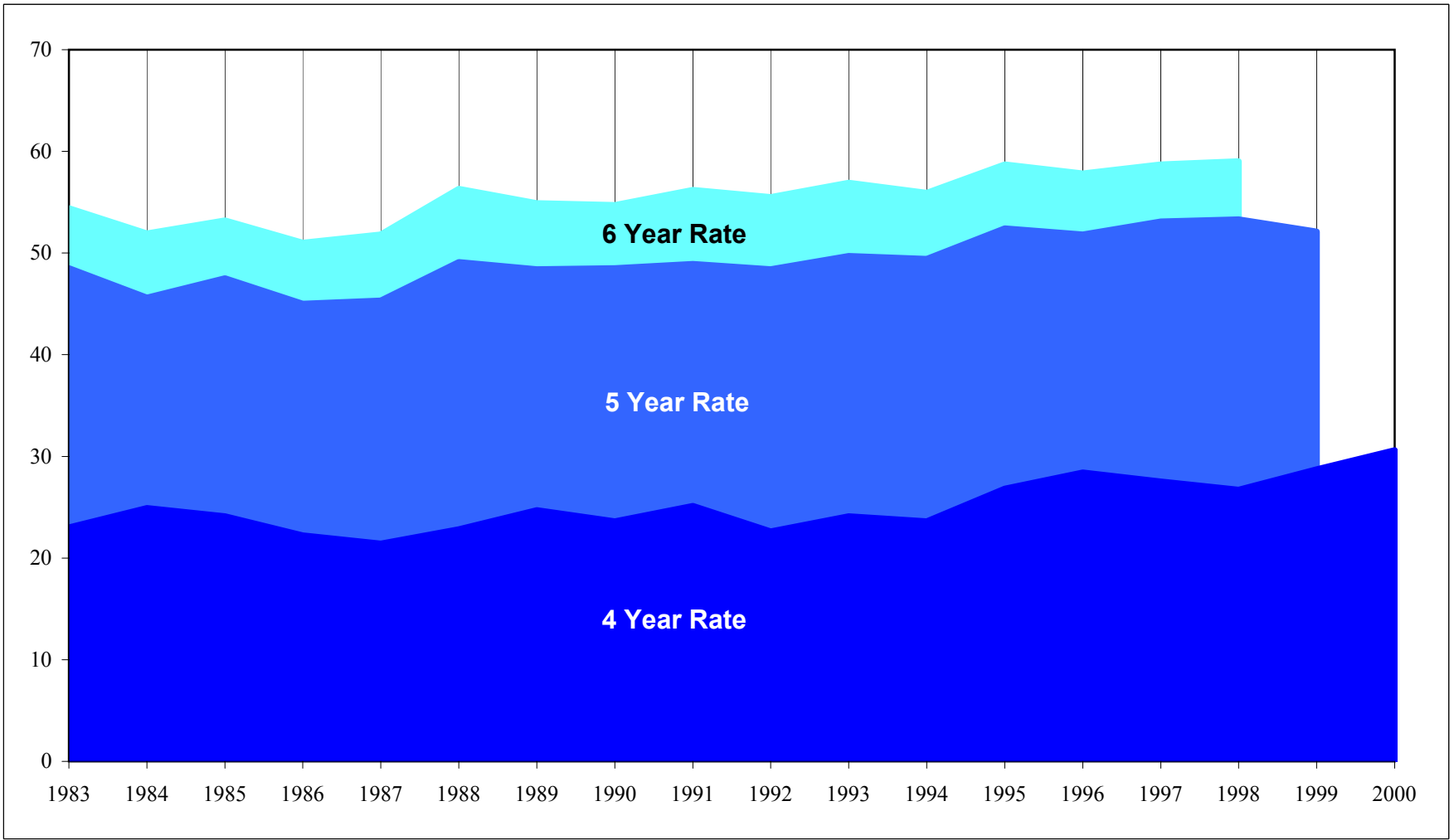
**Six Year Graduation Rates  
First-Time Full-Time Freshmen  
Fall Terms 1983-1998**

Enrollment Year	Total		Male		Female		Black		White		Other	
	Number	Rate	Number	Rate	Number	Rate	Number	Rate	Number	Rate	Number	Rate
1983	3,150	54.4	1,631	54.0	1,519	55.0	184	43.5	2,874	55.2	92	52.2
1984	3,195	51.9	1,607	50.0	1,588	53.9	175	40.0	2,941	52.5	79	57.0
1985	3,299	53.2	1,694	52.0	1,605	54.5	191	36.1	3,055	54.2	53	56.6
1986	3,503	51.0	1,811	48.8	1,692	53.3	205	42.0	3,246	51.7	52	42.3
1987	3,683	51.8	1,886	49.2	1,797	54.6	181	42.5	3,437	52.1	65	63.1
1988	3,708	56.3	1,959	52.8	1,749	60.2	192	46.4	3,462	56.9	54	51.9
1989	3,296	54.9	1,696	53.1	1,600	56.8	185	42.7	3,045	55.5	66	62.1
1990	3,336	54.7	1,706	52.2	1,630	57.3	239	41.4	3,006	55.7	91	58.2
1991	2,986	56.2	1,540	51.7	1,446	60.9	217	46.5	2,668	56.9	101	58.4
1992	3,136	55.5	1,584	54.2	1,552	56.9	209	44.0	2,815	56.5	112	53.6
1993	2,799	56.9	1,391	54.9	1,408	58.9	175	45.1	2,521	57.4	103	64.1
1994	2,850	55.2	1,470	52.1	1,380	58.4	144	43.0	2,604	56.2	102	46.6
1995	3,427	58.7	1,639	54.1	1,788	63.0	153	52.9	3,141	58.8	133	62.4
1996	3,637	57.8	1,795	53.3	1,842	62.3	192	46.3	3,305	58.4	140	55.4
1997	3,823	58.7	1,882	54.1	1,941	63.2	243	53.9	2,408	59.2	172	57.0
1998	3,747	59.0	1,491	53.1	1,956	64.3	273	53.5	3,336	59.4	138	58.7

SOURCE: Student Information System and Academic Inventory



**Graduation Rates  
First-Time Full-Time Freshmen  
Fall Terms 1983-2000**



SOURCE: Student Information System and Academic Inventory

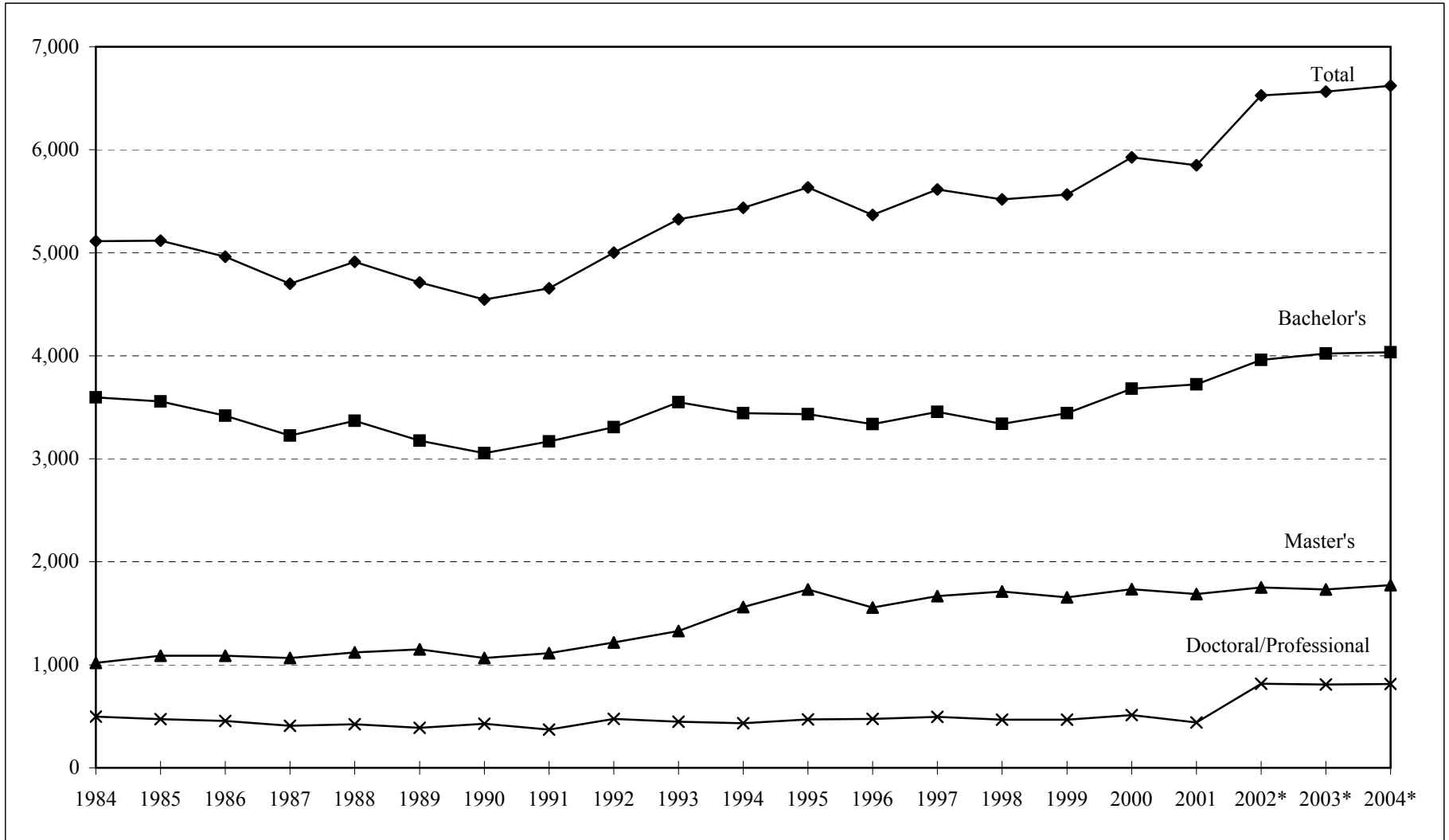
**Summary of Degrees Conferred  
By Discipline  
FY 2000-2004**

	BACHELOR'S					MASTER'S					DOCTORAL/PROFESSIONAL				
	99-00	00-01	01-02*	02-03*	03-04*	99-00	00-01	01-02*	02-03*	03-04*	99-00	00-01	01-02*	02-03*	03-04*
<b>DEGREES AWARDED</b>	<b>3,681</b>	<b>3,722</b>	<b>3,959</b>	<b>4,022</b>	<b>4,034</b>	<b>1,753</b>	<b>1,687</b>	<b>1,752</b>	<b>1,732</b>	<b>1,774</b>	<b>512</b>	<b>441</b>	<b>817</b>	<b>810</b>	<b>813</b>
<b>DOCTORAL</b>											<b>286</b>	<b>239</b>	<b>276</b>	<b>262</b>	<b>280</b>
<b>PROFESSIONAL</b>											<b>226</b>	<b>202</b>	<b>541</b>	<b>548</b>	<b>533</b>
<b>COLLEGE/SCHOOL</b>															
Agricultural Sciences & Natural Resources	207	224	226	225	188	62	77	63	55	58	12	5	11	3	11
Architecture & Design	65	88	56	77	74	10	16	5	15	6	0	0	0	0	0
Arts & Sciences	1,488	1,373	1,558	1,551	1,722	287	235	273	250	253	118	93	90	84	115
Biomedical Science	0	0	0	0	0	0	0	0	0	0	0	2	2	1	0
Business Administration	633	824	768	825	709	258	280	263	277	311	16	18	8	9	13
Communication & Information	318	330	355	397	379	67	105	78	94	89	9	5	8	8	5
Education, Health & Human Sciences	501	459	491	465	430	639	598	597	567	555	83	70	86	73	63
Engineering	304	294	284	280	312	159	147	127	121	153	32	31	19	28	34
Health Science Center			71	57	70			102	93	74			361	368	344
Intercollegiate Programs	0	0	0	0	0	18	23	17	22	23	9	9	8	3	4
Law	0	0	0	0	0	0	0	0	0	0	164	144	154	161	151
Nursing	125	112	120	110	123	43	36	40	37	45	5	3	5	1	3
Social Work	40	18	30	35	27	210	170	187	201	207	2	3	3	6	5
Veterinary Medicine	0	0	0	0	0	0	0	0	0	0	62	58	62	65	65

SOURCE: Academic Inventory

\*Data for 2002 - 2004 include Knoxville, Institute of Agriculture, Veterinary Medicine, Space Institute and Health Science Center

## Summary of Degrees Conferred By Level FY 1984-2004

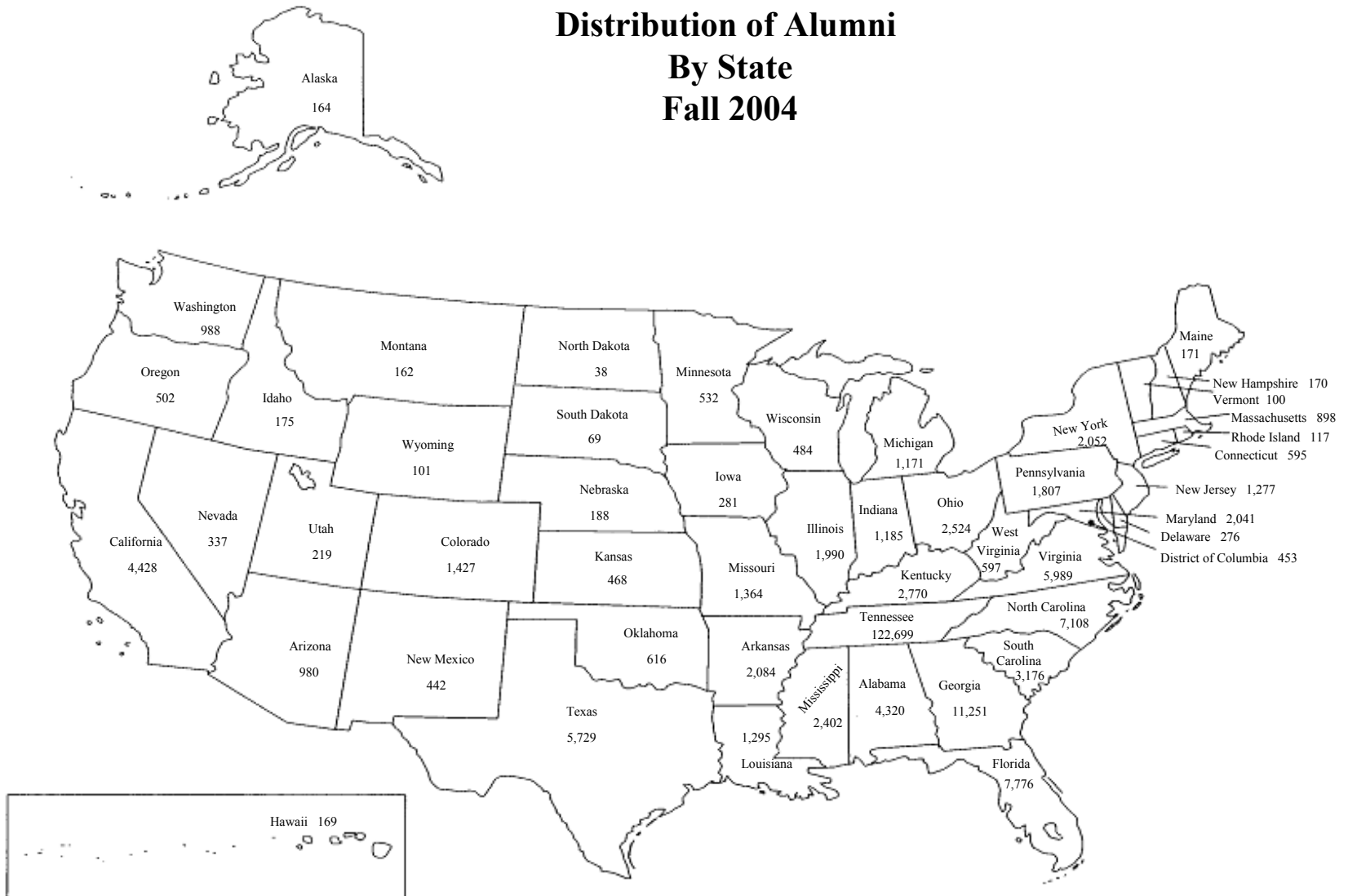


SOURCE: Academic Inventory

\*Data for 2002-2004 include Knoxville, Institute of Agriculture, Veterinary Medicine, Space Institute and Health Science Center



## Distribution of Alumni By State Fall 2004



SOURCE: Student Information System

NOTES: Includes Knoxville, Institute of Agriculture, Veterinary Medicine, Space Institute and Health Science Center. If an alumnus has degrees from multiple campuses, they are counted for each degree.

**Degrees Awarded by Major  
FY 1996-2004**

Major	Degree Awarded	1995-96	1996-97	1997-98	1998-99	1999-00	2000-01	2001-02	2002-03	2003-04
Accounting	Bachelor's	117	112	102	99	129	184	144	167	163
	Master's	57	74	66	80	76	74	82	81	80
Advertising	Bachelor's	44	56	48	52	82	83	97	108	88
Aerospace Engineering	Bachelor's	8	10	6	3	10	11	9	11	19
	Master's	8	9	3	7	2	4	4	6	6
	PhD	0	3	2	0	1	1	1	3	0
Agricultural & Extension Education	Bachelor's	6	10	9	7	15	9	11	10	6
	Master's	6	7	9	7	10	11	11	3	9
Agricultural Economics & Business	Bachelor's	20	21	14	20	16	22	15	13	26
	Master's	4	8	10	3	4	12	6	8	5
	PhD	1	3	3	3	0	0	0		0
Agricultural Mechanization	Bachelor's	4	0	0	1	0	0	0	0	0
Anatomy *	Master's							0	2	0
	PhD							4	2	4
Animal Science	Bachelor's	43	50	46	40	35	61	56	56	49
	Master's	4	10	5	4	8	7	6	4	5
	PhD	1	2	1	4	2	0	6	1	6
Anthropology	Bachelor's	51	37	47	38	54	38	45	55	49
	Master's	4	16	9	13	8	7	11	10	7
	PhD	4	2	8	6	7	6	6	2	5
Architecture	Bachelor's	48	45	37	47	49	67	40	56	56
	Master's	0	1	5	5	10	16	5	15	6
Area, Ethnic & Cultural Studies	Bachelor's	21	40	47	36	63	35	59	57	52
Art History	Bachelor's	11	8	4	9	11	8	13	11	13
Art Education	Master's	3	1	0	0	0	0	0	0	0

continued

**Degrees Awarded by Major  
FY 1996-2004**

Major	Degree Awarded	1995-96	1996-97	1997-98	1998-99	1999-00	2000-01	2001-02	2002-03	2003-04
Audiology	Bachelor's	11	4	4	9	8	11	10	4	5
	Master's	26	11	9	14	14	16	15	11	3
Biochemistry & Cellular & Molecular Biology**	Bachelor's	16	15	16	16	9	1	0	1	0
	Master's	2	2	4	0	0	5	6	2	4
	PhD	1	3	5	2	4	3	10	9	5
Biological Sciences**	Master's	13	13	13	8	1	0	2	2	3
	PhD	10	7	10	8	1	3	4	1	2
Biology	Bachelor's	92	118	121	145	137	129	107	119	151
Biomedical Engineering *	Master's							9	7	6
	PhD							0	1	3
Biosystems Engineering	Bachelor's	7	8	11	6	5	7	6	7	3
	Master's	4	3	0	2	1	5	3	1	4
	PhD	0	1	2	2	1	1	1	0	2
Biosystems Engineering Technology	Master's	6	6	7	4	5	0	6	3	5
Botany	Bachelor's	9	9	5	4	3	2	0	0	0
	Master's	4	7	2	3	2	4	0	3	1
	PhD	1	2	2	0	2	1	4	3	3
Broadcasting	Bachelor's	65	82	90	90	88	95	86	82	86
Business Administration	Bachelor's	77	55	60	78	89	90	95	107	81
	Master's	106	92	109	138	169	182	164	177	177
	PhD	12	9	11	5	8	9	5	5	10
Business/Marketing Education	Bachelor's	37	23	29	16	9	3	0	0	0
Chemical Engineering	Bachelor's	39	57	37	27	36	42	27	28	24
	Master's	9	15	3	9	8	10	4	8	5
	PhD	3	10	3	3	7	0	3	3	5

continued

**Degrees Awarded by Major  
FY 1996-2004**

Major	Degree Awarded	1995-96	1996-97	1997-98	1998-99	1999-00	2000-01	2001-02	2002-03	2003-04
Chemistry	Bachelor's	12	13	11	14	11	13	16	18	22
	Master's	3	7	10	7	7	5	3	5	3
	PhD	16	14	6	14	21	9	10	12	12
Child Development	Bachelor's	55	56	41	44	48	49	73	88	78
	Master's	5	13	23	11	33	23	30	32	31
Civil Engineering	Bachelor's	77	63	65	73	61	61	48	68	46
	Master's	17	30	18	20	40	28	22	20	22
	PhD	9	7	2	3	4	3	1	3	7
Classics	Bachelor's	1	2	2	5	6	7	7	2	6
Clinical Laboratory Sciences *	Master's							0	1	0
College Student Personnel	Master's	9	7	16	13	13	11	16	8	17
Communications	Master's	28	18	31	39	25	27	26	35	29
	PhD	6	7	6	6	9	5	8	8	5
Comparative & Experimental Medicine	Master's	3	0	3	2	2	1	3	2	1
	PhD	6	3	6	6	5	4	5	3	4
Computer Engineering	Bachelor's	0	0	0	0	0	0	13	20	25
Computer Science	Bachelor's	14	20	29	25	22	35	45	45	40
	Master's	20	21	23	32	28	23	27	30	29
	PhD	3	4	5	3	3	2	1	2	3
Curriculum & Instruction	Master's	284	309	195	9	2	0	0	0	0
	PhD	6	12	3	0	0	0	0	0	0
Cytotechnology *	Bachelor's							5	8	3
Dentistry *	DDS							75	74	75

continued



**Degrees Awarded by Major  
FY 1996-2004**

Major	Degree Awarded	1995-96	1996-97	1997-98	1998-99	1999-00	2000-01	2001-02	2002-03	2003-04
Dental Sciences *	Master's							6	5	6
Dental Hygiene *	Bachelor's							25	24	30
Ecology & Evolutionary Biology	Bachelor's	0	0	0	0	0	1	1	0	0
	Master's	4	9	8	2	0	7	4	4	7
	PhD	5	3	3	3	2	8	3	6	4
Economics (CAS)	Bachelor's	53	55	60	57	55	77	92	83	100
Economics (CBA)	Bachelor's	4	3	7	10	9	11	8	9	4
	Master's	6	5	7	2	3	7	3	3	11
	PhD	12	4	4	5	6	7	3	3	3
Education Administration & Policy Studies	Master's	21	20	10	9	15	10	14	7	10
	PhD	8	16	7	7	9	7	2	2	7
Education	Master's	0	0	130	343	360	367	314	344	355
	PhD	33	38	37	28	55	42	54	48	43
Educational Psychology	Master's	20	32	33	42	29	36	48	34	43
	PhD	0	0	0	0	2	0	3	0	3
Electrical Engineering	Bachelor's	73	63	62	52	66	52	50	44	56
	Master's	23	23	14	17	19	14	11	26	42
	PhD	9	5	3	2	1	7	4	4	4
Engineering Physics	Bachelor's	2	2	1	1	2	3	1	1	3
Engineering Science	Bachelor's	27	19	21	15	11	21	23	17	30
	Master's	11	12	6	17	5	5	7	4	8
	PhD	9	6	6	3	4	4	2	4	1
English	Bachelor's	142	139	146	160	166	155	162	147	153
	Master's	13	15	22	16	26	12	18	24	22
	PhD	14	7	11	14	7	3	8	8	7
Entomology & Plant Pathology	Master's	9	4	13	5	9	7	4	8	3

continued

**Degrees Awarded by Major  
FY 1996-2004**

Major	Degree Awarded	1995-96	1996-97	1997-98	1998-99	1999-00	2000-01	2001-02	2002-03	2003-04
Environmental Engineering	Master's	37	34	25	21	16	9	9	13	9
Epidemiology *	Master's							5	6	3
Exercise Science	Bachelor's	0	47	47	35	48	54	48	29	38
	Master's									12
Family Studies	Bachelor's	0	17	38	47	61	41	38	34	41
Finance	Bachelor's	107	132	116	136	144	146	135	150	137
Food Science & Technology	Bachelor's	11	6	5	15	7	6	12	11	11
	Master's	4	7	6	9	5	6	6	7	4
	PhD	3	5	1	2	4	1	3	0	1
Forestry	Bachelor's	38	26	19	29	17	16	21	18	18
	Master's	5	3	2	9	5	8	5	3	8
French	Bachelor's	16	9	9	12	9	14	12	12	13
	Master's	2	4	1	10	4	1	2	5	6
Geography	Bachelor's	15	22	19	21	16	16	19	23	26
	Master's	8	11	6	3	3	5	6	10	11
	PhD	3	2	3	2	2	3	2	2	3
Geology	Bachelor's	22	15	11	4	9	10	11	12	10
	Master's	7	8	6	8	7	8	10	5	6
	PhD	2	4	3	1	2	2	4	3	1
German	Bachelor's	8	10	9	9	9	10	7	4	6
	Master's	3	3	3	2	3	3	5	3	1
Graphic Design	Bachelor's	22	23	25	21	27	31	23	8	24
Health Education	Bachelor's	22	13	15	9	12	11	6	7	10
	Master's	9	11	9	5	7	4	7	1	1
	PhD	1	2	4	1	0	1	1	0	0

continued

**Degrees Awarded by Major  
FY 1996-2004**

Major	Degree Awarded	1995-96	1996-97	1997-98	1998-99	1999-00	2000-01	2001-02	2002-03	2003-04
Health Information Management *	Bachelor's							13	7	11
Health Science Administration *	PhD							3	0	2
History	Bachelor's	65	71	93	82	87	96	84	78	98
	Master's	6	9	11	12	3	3	9	4	10
	PhD	4	7	3	7	1	1	4	5	2
Hotel & Restaurant Management	Bachelor's	46	33	45	37	38	29	41	26	27
	Master's	2	8	0	2	0	0	0	0	0
Human Ecology Education	Bachelor's	2	4	1	0	0	0	0	0	0
Human Ecology	Master's	3	3	5	5	1	1	0	0	0
	PhD	13	26	22	16	17	20	26	23	10
Human Performance & Sports Studies	Bachelor's	49	5	2	2	1	0	0	0	0
	Master's	39	54	57	71	81	71	78	49	47
Human Resource Development	Bachelor's	32	60	29	43	57	39	50	56	52
	Master's	50	44	44	33	36	27	24	32	23
Human Services	Bachelor's	29	26	20	27	26	18	21	23	29
Industrial & Organizational Psychology	Master's	1	0	0	0	0	0	0	0	0
	PhD	4	11	1	3	4	5	3	0	5
Industrial Education	Bachelor's	0	0	0	0	0	10	3	0	1
Industrial Engineering	Bachelor's	35	30	38	33	34	36	37	24	26
	Master's	36	35	32	23	40	44	30	20	16
Information Sciences	Master's	34	46	50	35	42	78	52	59	60
Interior Design	Bachelor's	21	13	16	18	16	21	16	21	18
	Master's	3	0	4	3	0	0	0	0	0
Italian	Bachelor's	0	1	1	1	0	2	4	2	1

continued

**Degrees Awarded by Major  
FY 1996-2004**

Major	Degree Awarded	1995-96	1996-97	1997-98	1998-99	1999-00	2000-01	2001-02	2002-03	2003-04
Journalism	Bachelor's	68	69	66	94	94	109	139	168	157
Law	JD	142	134	149	155	164	144	154	161	151
Logistics & Transportation	Bachelor's	71	110	103	132	130	152	135	174	115
Management Science	Master's	1	7	4	4	2	4	2	5	6
	PhD	2	4	1	3	2	2	0	1	0
Marketing	Bachelor's	107	81	78	108	124	145	135	152	149
Materials Science & Engineering	Bachelor's	7	7	8	6	2	6	8	6	3
	Master's							6	5	7
	PhD							0	2	8
Mathematics	Bachelor's	32	26	19	25	15	18	15	15	20
	Master's	18	21	15	16	19	12	14	9	13
	PhD	4	7	4	4	7	6	3	2	4
Mechanical Engineering	Bachelor's	76	70	79	59	76	62	58	50	67
	Master's	16	20	9	16	11	16	16	10	17
	PhD	4	0	5	4	6	6	4	2	1
Medical Technology **	Bachelor's	11	11	5	5	5	5	14	11	19
Medicine	MD							158	153	151
Metallurgical Engineering	Master's	6	6	2	7	5	6	4	0	0
	PhD	3	4	5	4	3	1	2	1	0
Microbiology**	Bachelor's	20	15	15	14	19	13	3	0	0
	Master's	3	1	3	4	3	5	4	2	2
	PhD	3	5	8	1	4	6	3	3	9
Modern Foreign Languages	PhD	2	2	2	1	3	2	2	4	5

continued

**Degrees Awarded by Major  
FY 1996-2004**

Major	Degree Awarded	1995-96	1996-97	1997-98	1998-99	1999-00	2000-01	2001-02	2002-03	2003-04
Multi/Interdisciplinary Studies	Bachelor's	132	121	117	89	67	44	64	36	39
	Master's	20	11	17	12	16	22	14	20	22
Music Education	Bachelor's	4	0	0	0	0	0	0	0	0
Music	Bachelor's	16	20	27	25	21	30	36	36	37
	Master's	18	20	28	14	25	15	26	24	27
Nuclear Engineering	Bachelor's	11	12	11	7	6	0	10	11	13
	Master's	19	8	12	9	11	4	9	7	13
	PhD	6	5	6	7	3	6	2	5	4
Nursing**	Bachelor's	102	101	104	91	125	112	120	110	123
	Master's	47	48	42	51	43	36	65	68	75
	PhD	5	1	2	7	5	3	21	21	13
Nutrition	Bachelor's	13	22	8	10	12	16	15	11	8
	Master's	8	11	9	12	5	16	14	9	4
Occupational Therapy *	Bachelor's							21	12	14
Ornamental Horticulture	Bachelor's	43	45	42	44	65	65	56	40	14
	Master's	3	3	5	6	2	6	2	1	3
Pathology *	Master's							0	0	0
	PhD							4	2	3
Pharmacology *	Master's							0	0	0
	PhD							1	7	1
Pharmacy *	PharmD							92	95	91
Physical Therapy *	Bachelor's							1	0	0
	Master's							54	41	35
Physiology *	Master's							1	0	0
	PhD							0	1	2

continued

**Degrees Awarded by Major  
FY 1996-2004**

Major	Degree Awarded	1995-96	1996-97	1997-98	1998-99	1999-00	2000-01	2001-02	2002-03	2003-04
Pharmaceutics *	Master's							1	0	0
	PhD							1	5	2
Philosophy	Bachelor's	15	8	8	10	15	7	20	13	17
	Master's	4	8	4	3	6	6	9	5	3
	PhD	2	1	4	7	2	3	4	4	3
Physics	Bachelor's	5	4	4	2	3	3	7	4	3
	Master's	12	7	7	6	3	1	6	9	4
	PhD	9	8	8	4	10	13	7	7	7
Planning	Master's	4	11	35	16	23	21	16	20	15
Plant Science	Bachelor's	28	43	42	33	16	12	17	46	50
	Master's	7	12	6	5	7	7	7	7	2
	PhD	1	3	0	6	5	3	1	2	2
Political Science	Bachelor's	105	111	102	102	93	97	142	157	151
	Master's	7	6	4	8	5	2	7	4	4
	PhD	5	6	9	7	7	1	7	4	1
Polymer Engineering	Master's	4	1	2	2	2	8	5	2	2
	PhD	5	1	0	3	3	3	0	1	1
Psychology	Bachelor's	240	293	265	268	286	299	358	392	388
	Master's	4	13	10	5	4	8	10	4	7
	PhD	18	14	6	20	16	17	11	12	23
Public Administration	Bachelor's	8	7	6	2	2	4	8	5	4
	Master's	7	6	10	10	5	6	12	5	14
Public Health	Bachelor's	0	1	0	0	0	0	0	0	0
	Master's	21	15	23	23	24	17	28	24	16
Recreation & Tourism Management	Bachelor's	34	33	28	29	38	50	43	40	32
	Master's	14	11	16	10	13	8	15	11	11

continued

**Degrees Awarded by Major  
FY 1996-2004**

Major	Degree Awarded	1995-96	1996-97	1997-98	1998-99	1999-00	2000-01	2001-02	2002-03	2003-04
Rehabilitation Counseling	Master's	12	16	15	9	2	0	0	0	0
Religious Studies	Bachelor's	11	10	12	11	13	7	8	14	11
Retail & Consumer Sciences	Bachelor's	76	62	65	66	56	63	57	54	64
	Master's	0	0	3	6	4	5	7	5	2
Russian	Bachelor's	6	1	4	3	1	5	1	1	5
Safety Education & Service	Master's	18	8	10	13	12	0	2	11	6
Social Work	Bachelor's	30	34	24	31	40	18	30	35	27
	Master's	163	179	170	130	210	170	187	201	207
	PhD	3	1	6	5	2	3	3	6	5
Sociology	Bachelor's	70	75	91	106	100	100	123	98	112
	Master's	5	5	11	10	4	2	4	4	2
	PhD	4	4	2	3	4	6	3	4	7
Spanish	Bachelor's	20	18	16	25	38	29	39	45	53
	Master's	10	3	5	5	7	4	5	3	8
Special Education	Bachelor's	31	40	28	23	36	26	28	35	22
	Master's	36	44	47	15	2	2	0	0	0
Speech Communications	Bachelor's	41	45	46	53	54	43	33	39	48
Speech Pathology	Bachelor's	36	37	36	42	42	29	37	36	21
	Master's	53	47	72	64	56	38	34	25	15
Speech Pathology & Hearing Science	PhD	2	1	2	2	3	0	3	0	7
Sports Management	Bachelor's	11	22	32	44	59	50	68	62	80
Statistics	Bachelor's	13	7	3	7	6	15	16	10	8
	Master's	10	8	12	7	9	13	12	11	14

continued

**Degrees Awarded by Major  
FY 1996-2004**

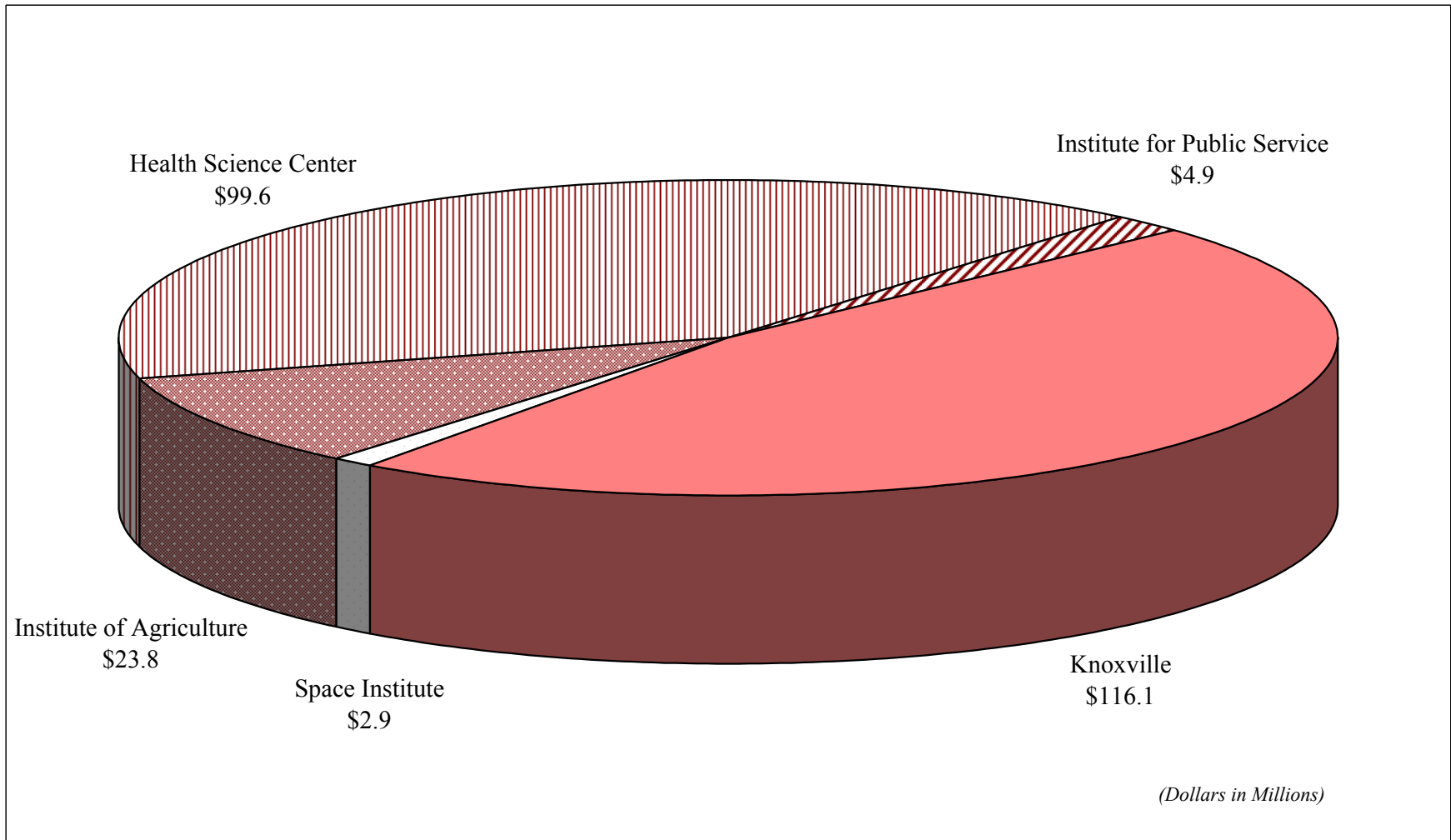
Major	Degree Awarded	1995-96	1996-97	1997-98	1998-99	1999-00	2000-01	2001-02	2002-03	2003-04
Studio Art	Bachelor's	28	40	40	30	41	49	52	47	66
	Master's	11	13	9	7	8	13	6	14	16
Theatre	Bachelor's	11	19	14	19	17	24	20	22	19
	Master's	2	8	6	3	11	3	3	4	10
Toxicology *	Master's							0	0	0
Veterinary Medicine	DVM	51	66	64	58	62	58	62	65	65
Wildlife & Fisheries Science	Bachelor's	38	46	30	37	31	26	32	24	11
	Master's	12	7	6	6	6	7	7	10	10
Zoology	Bachelor's	40	31	26	11	10	0	0	0	0
	Master's	1	2	6	7	1	0	0	0	0
	PhD	4	3	1	8	10	0	0	0	0
<b>TOTALS</b>										
	<b>Bachelor's</b>	<b>3,336</b>	<b>3,455</b>	<b>3,340</b>	<b>3,443</b>	<b>3,681</b>	<b>3,722</b>	<b>3,722</b>	<b>4,022</b>	<b>4,034</b>
	<b>Master's</b>	<b>1,557</b>	<b>1,666</b>	<b>1,712</b>	<b>1,655</b>	<b>1,753</b>	<b>1,687</b>	<b>1,687</b>	<b>1,732</b>	<b>1,774</b>
	<b>PhD</b>	<b>281</b>	<b>295</b>	<b>254</b>	<b>255</b>	<b>286</b>	<b>239</b>	<b>239</b>	<b>262</b>	<b>280</b>
	<b>Professional</b>	<b>193</b>	<b>200</b>	<b>213</b>	<b>213</b>	<b>226</b>	<b>202</b>	<b>880</b>	<b>548</b>	<b>533</b>
	<b>All Degrees</b>	<b>5,367</b>	<b>5,616</b>	<b>5,519</b>	<b>5,566</b>	<b>5,946</b>	<b>5,850</b>	<b>6,528</b>	<b>6,564</b>	<b>6,621</b>

\*Degrees Awarded through the Health Science Center

\*\*Degrees Awarded at both the Knoxville Campus and the Health Science Center



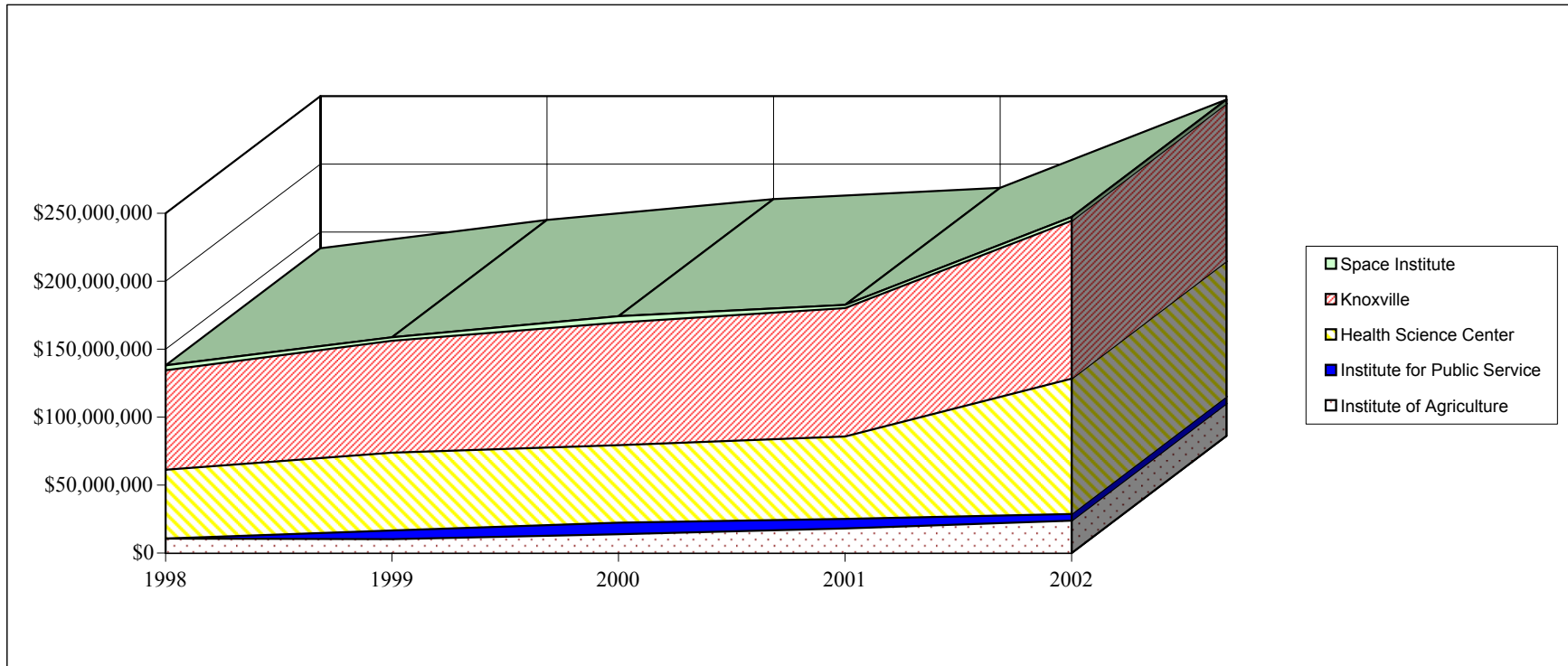
## Research Awards By Campus FY 2002



Updated figures were not available at press time

SOURCE: Office of Research Administration

## Research Awards By Campus FY 1998-2002

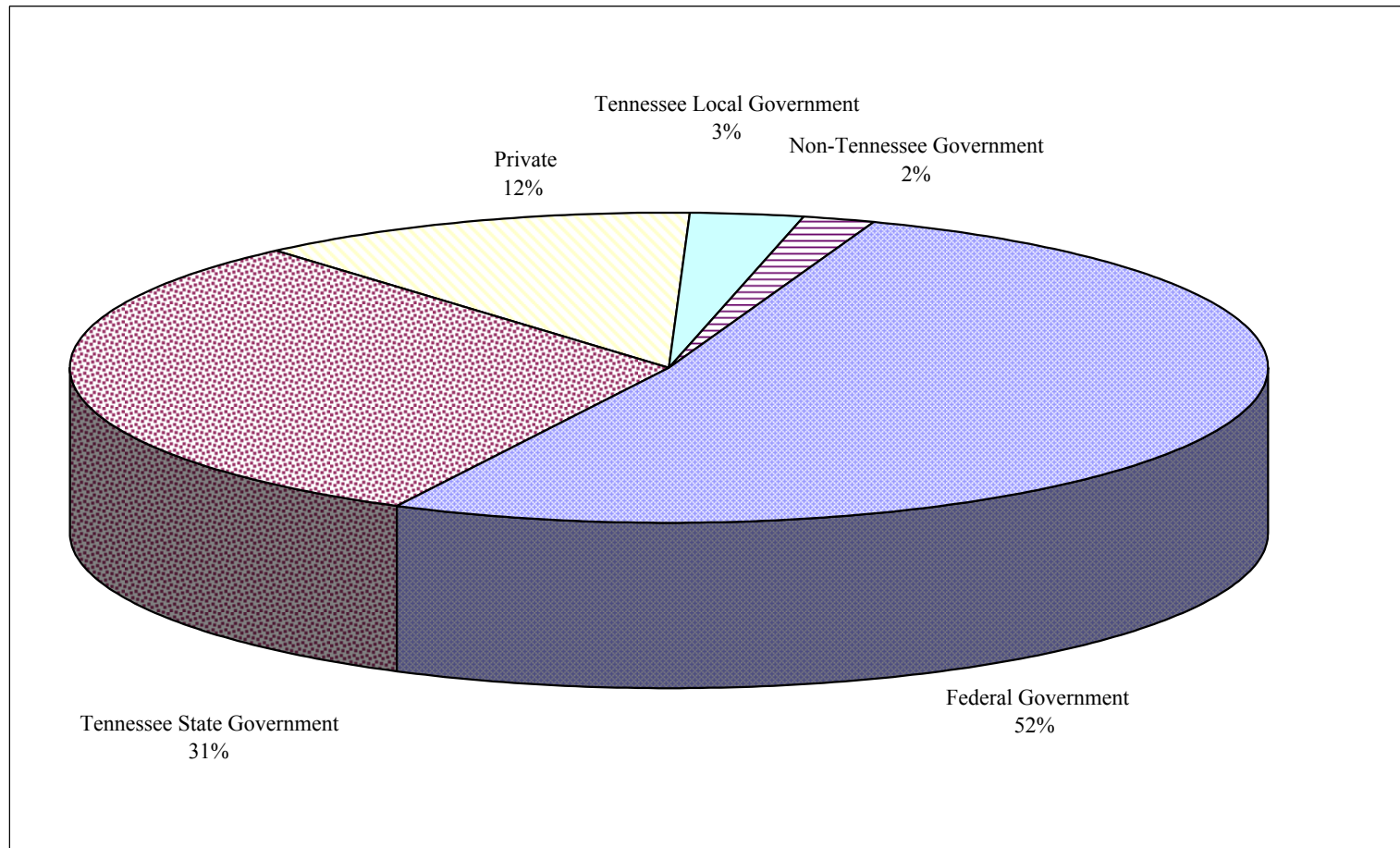


	1998	1999	2000	2001	2002
Institute of Agriculture	\$10,665,900	\$10,106,912	\$13,745,605	\$17,952,771	\$23,844,523
Institute for Public Service		\$6,512,867	\$8,535,818	\$7,020,252	\$4,917,173
Health Science Center	\$50,594,458	\$57,197,585	\$57,023,086	\$60,802,219	\$99,642,392
Knoxville	\$73,257,218	\$82,406,661	\$90,395,516	\$94,511,592	\$116,122,143
Space Institute	\$3,599,141	\$2,643,781	\$4,586,364	\$2,245,125	\$2,869,867
<b>TOTAL</b>	<b>\$138,116,717</b>	<b>\$158,867,806</b>	<b>\$174,286,389</b>	<b>\$182,531,959</b>	<b>\$247,396,098</b>

Updated figures were not available at press time

SOURCE: Office of Research Administration

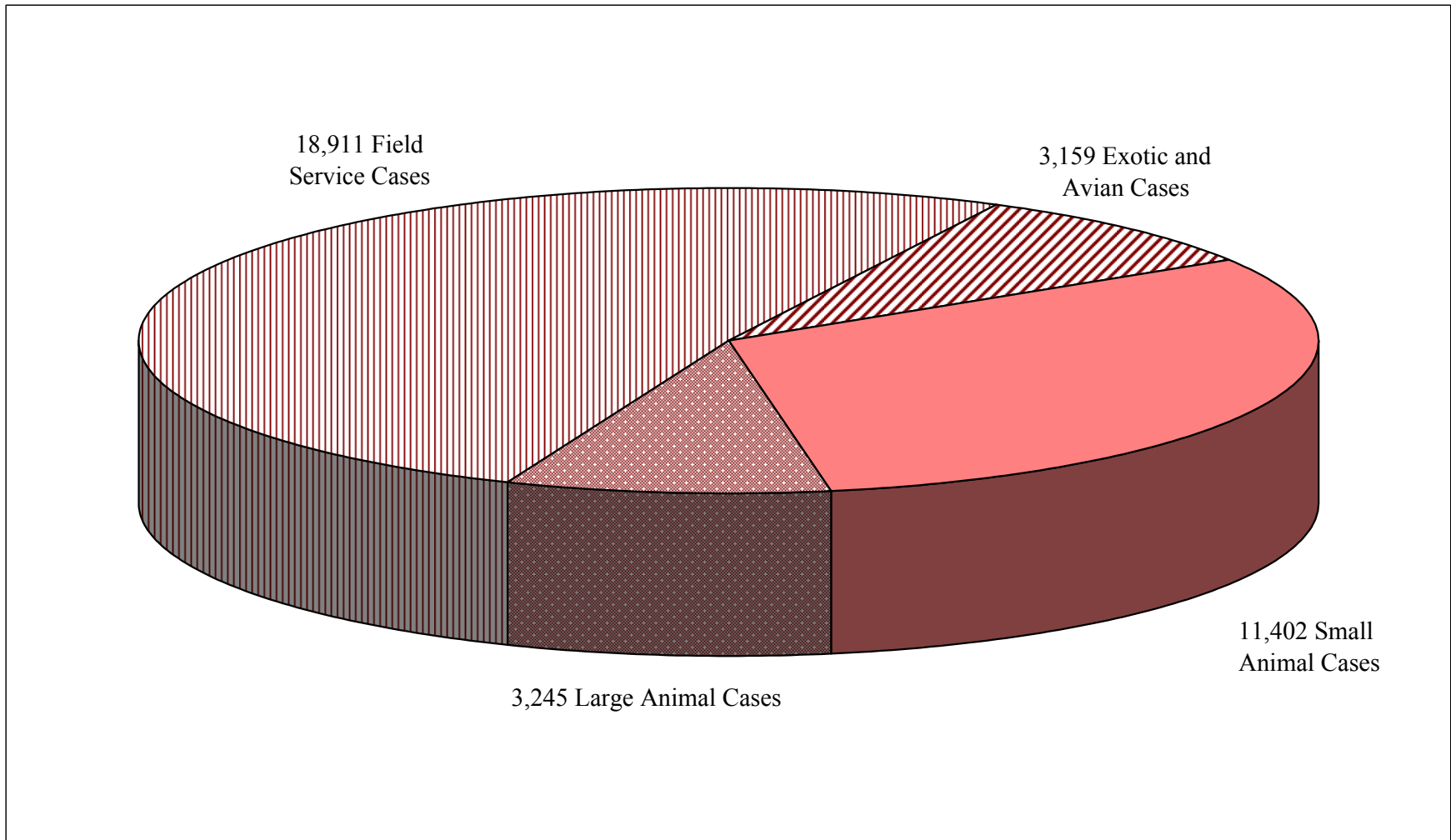
**Research Awards  
By Source  
FY 2002  
(As Percentages)**



Updated figures were not available at press time

SOURCE: Office of Research Annual Report

**Institute of Agriculture  
Outreach to Veterinary Clients  
FY 2004**



SOURCE: Institute of Agriculture, State of the Institute 2004

**University of Tennessee Extension  
Priority Programs  
FY 2004**

<b>Agriculture and Natural Resources</b>
Agrosecurity Clean Water/Animal Waste Management Dairy Grazing Field Crops Extension and Research Team Fruits and Vegetables Master Beef Producer Tobacco
<b>Resource Development</b>
Sustainable Development Institute
<b>4-H Youth Development</b>
Citizenship Natural Resources and the Environment Volunteer Development Workforce Preparation Youth Leadership Development
<b>Family and Consumer Sciences</b>
Family Economics Health and Safety Human Development Nutrition and Food Safety

SOURCE: University of Tennessee Extension