

## PREFACE

I welcome you to the **2003-2004** edition of the **University of Tennessee Fact Book**. This edition marks the second year that the Fact Book has been produced only in non-printed versions. Our initial venture into electronic publishing last year led to considerable support and acceptance within the university community and resulted in a *Best Electronic Fact Book* award from the Southern Association of Institutional Research last fall. Not only are considerable financial savings realized from these ventures, but the on-line and compact disk versions of the Fact Book also allow for better distribution throughout the state.

The reader is reminded that Fact Book data reflect the reorganization of the University of Tennessee. Most of the tables include figures for the programs in Knoxville, Memphis, and Tullahoma, as well as the Institute for Public Service and the Institute of Agriculture. If you need information not found in the Fact Book please contact the Office of Institutional Research and Assessment.

The UT e-Fact Book is presented in Adobe PDF format. It is best navigated using the **Contents** within the Bookmark pane as found in **Adobe Reader 5.0.5 and 6.0.2 or higher**. Use the links at the left on this page to begin navigation.

Finally, this project represents the help and cooperation of dozens of people across the University of Tennessee and I am grateful for their help. Within the Office of Institutional Research and Assessment, Elizabeth Pemberton is Fact Book editor, and Mozhgan Shahidi oversees the technical and production aspects of this project. Their tireless work is greatly appreciated.

As always, I solicit your comments and suggestions regarding the Fact Book. Please contact me at [dscroggs@tennessee.edu](mailto:dscroggs@tennessee.edu), (865) 974-4373, or at 211 Conference Center, 600 Henley Street. You are welcome to bookmark our website at <http://oira.tennessee.edu>.

Don Scroggins, Director  
Office of Institutional Research and Assessment

E01-0160-002-05

# CONTENTS

## Introduction

Contents .....	i-ii
Preface .....	iii

## Student Data

Enrollment by Full-Time/Part-Time, Level, Gender, and Race, Fall 2003 .....	1
Full-Time Equivalent Enrollment by Full-Time/Part-Time, Level, Gender, and Race, Fall 2003.....	2
Enrollment by Level, College, Race, and Gender, Fall 2003 .....	3
Enrollment by Age, Level, and Gender, Fall 2003.....	4
Distribution of Student Credit Hour Loads, Fall 2003 .....	5
Student Credit Hours by Level, College, and Term, FY 1999-2003 .....	6
Top 10 Enrollment Feeders by Tennessee County, State, and Country, Fall 2003 .....	7
Enrollment by County, Fall 2003 .....	8
Enrollment by State, Fall 2003 .....	9
Enrollment by Country, Fall 2003 .....	10
Enrollment by Race and Gender, Fall 1988-2003 .....	11
Total Enrollment by Level, Full-Time and Part-Time, Fall 1999-2003 .....	12
First-Time Freshmen Enrollment by College, Race, and Gender, Fall 2003 .....	13
Applied, Admitted, and Enrolled Freshmen, Fall 1984-2003 .....	14
Average Test Score, High School GPA, and Class Ranking for First-Time Freshmen, Fall 1990-2003 .....	15
Average Equivalent ACT Scores, High School GPA, and Class Ranking for First-Time Freshmen, Fall 1985-2003 .....	16
Undergraduate Transfer Enrollment by College, Race, and Gender, Fall 2003 .....	17
Undergraduate Transfer Enrollment, Top Ten Feeder Institutions, Fall 2003 .....	18
Applied, Admitted, and Enrolled Undergraduate Transfer Students, Fall 1984-2003 .....	19
Undergraduate Enrollment by Race and Gender, Fall 1988-2003.....	20
First-Time Graduate and Professional Headcount by College, Race, and Gender, Fall 2003.....	21
Graduate Enrollment by Race and Gender, Fall 1988-2003.....	22

## Faculty/Staff Data

Full-Time Instructional Faculty by Appointment Type, Rank, Tenure Status, and College, Fall 2003 .....	23
Tenured and Non-Tenured Full-Time Instructional Faculty, Fall 1995-2003, (as Percentages).....	24
Full-Time Instructional Faculty by Gender, Highest Degree Held, and Race, Fall 2003.....	25
Age and Length of Service of Full-Time Instructional Faculty, Fall 1997-2003, (as Percentages) .....	26
Distribution of Employees by EEO Category, Fall 2003 .....	27
Chairs of Excellence Filled as of October 2003 .....	28

## Financial Data

Unrestricted Expenditures and Transfers by Budgetary Function with Percent Distribution of Expenditures, FY 1999-2004.....	29
Unrestricted Current Revenue by Budgetary Function and Revenue Dollars per Full-Time Equivalent Student, FY 1999-2004 ...	30
Number of Contributors and Gifts, FY 1977-2003 .....	31
Average Salaries of Full-Time Instructional Faculty by College and Rank, FY 2003-2004 .....	32
Median Graduate Assistant Stipends, FY 1984-2004.....	33
Student Tuition by Level, Academic Year 2003-2004 .....	34
Need-Based Financial Aid, Academic Year 2003-2004.....	35

## Facilities Data

Number and Percent of Occupancy for Student Residence Halls, and Married/Graduate Student Housing, Fall 2003 .....	36
Main Library Holdings and Expenditures, FY 1999-2003 .....	37
Law Library Holdings and Expenditures, FY 1999-2003 .....	38
Health Science Center Library Holdings and Expenditures, FY 1999-2003 .....	39
Space Institute Library Holdings and Expenditures, FY 2001-2003 .....	40
University of Tennessee Facilities and Acreage, Fall 2003 .....	41

## Outcomes Data

One Year Retention Rates, First-Time Full-Time Freshmen, Fall Terms 1983-2002.....	42
Four Year Graduation Rates, First-Time Full-Time Freshmen, Fall Terms 1983-1999 .....	43
Five Year Graduation Rates, First-Time Full-Time Freshmen, Fall Terms 1983-1998 .....	44
Six Year Graduation Rates, First-Time Full-Time Freshmen, Fall Terms 1983-1997.....	45
Graduation Rates, First-Time Full-Time Freshmen, Fall Terms 1983-1999.....	46
Summary of Degrees Conferred by Discipline, FY 1999-2003 .....	47
Summary of Degrees Conferred by Level, FY 1984-2003.....	48
Distribution of Alumni by County, Fall 2003 .....	49
Distribution of Alumni by State, Fall 2003 .....	50
Degrees Awarded by Major, FY 1996-2003 .....	51-61

## Research and Public Service Data

Research Awards by Campus, FY 2002.....	62
Research Awards by Campus, FY 1998-2002.....	63
Research Awards by Source, FY 1998-2002, (as Percentages).....	64
Institute of Agriculture Plant Biotechnology Building.....	65
College of Veterinary Medicine Open House .....	66
Institute for Public Service, National Forensics Academy .....	67

**ENROLLMENT  
BY FULL-TIME/PART-TIME, LEVEL, GENDER, AND RACE  
FALL 2003**

	Total	GENDER		RACE (U.S. Residents only)						International
		Men	Women	Am. Indian	Asian	Black	Hispanic	White	Not Reported	
<b>TOTAL ENROLLMENT</b>	<b>27,281</b>	<b>13,073</b>	<b>14,208</b>	<b>95</b>	<b>680</b>	<b>1,969</b>	<b>316</b>	<b>22,758</b>	<b>283</b>	<b>1,180</b>
Full-Time	23,361	11,293	12,068	79	617	1,722	270	19,513	227	933
Part-Time	3,920	1,780	2,140	16	63	247	46	3,245	56	247
<b>TOTAL UNDERGRADUATE</b>	<b>19,224</b>	<b>9,392</b>	<b>9,832</b>	<b>66</b>	<b>476</b>	<b>1,400</b>	<b>228</b>	<b>16,638</b>	<b>155</b>	<b>261</b>
Full-Time	17,513	8,605	8,908	58	444	1,283	205	15,164	125	234
Part-Time	1,711	787	924	8	32	117	23	1,474	30	27
<b>First-Time Freshmen</b>	<b>3,579</b>	<b>1,741</b>	<b>1,838</b>	<b>16</b>	<b>87</b>	<b>323</b>	<b>37</b>	<b>3,074</b>	<b>22</b>	<b>20</b>
Full-Time	3,529	1,721	1,808	16	86	316	36	3,033	22	20
Part-Time	50	20	30	0	1	7	1	41	0	0
<b>Other Freshmen</b>	<b>1,615</b>	<b>888</b>	<b>727</b>	<b>5</b>	<b>40</b>	<b>145</b>	<b>14</b>	<b>1,387</b>	<b>15</b>	<b>9</b>
Full-Time	1,521	844	677	5	39	135	13	1,307	13	9
Part-Time	94	44	50	0	1	10	1	80	2	0
<b>Sophomore</b>	<b>3,903</b>	<b>1,887</b>	<b>2,016</b>	<b>12</b>	<b>94</b>	<b>291</b>	<b>58</b>	<b>3,381</b>	<b>30</b>	<b>37</b>
Full-Time	3,701	1,796	1,905	11	91	274	51	3,214	25	35
Part-Time	202	91	111	1	3	17	7	167	5	2
<b>Junior</b>	<b>3,998</b>	<b>1,924</b>	<b>2,074</b>	<b>10</b>	<b>97</b>	<b>249</b>	<b>50</b>	<b>3,519</b>	<b>30</b>	<b>43</b>
Full-Time	3,736	1,788	1,948	9	93	235	47	3,287	25	40
Part-Time	262	136	126	1	4	14	3	232	5	3
<b>Senior</b>	<b>5,811</b>	<b>2,818</b>	<b>2,993</b>	<b>21</b>	<b>153</b>	<b>384</b>	<b>64</b>	<b>5,040</b>	<b>50</b>	<b>99</b>
Full-Time	4,928	2,415	2,513	17	134	322	57	4,273	38	87
Part-Time	883	403	480	4	19	62	7	767	12	12
<b>Other Undergraduate</b>	<b>318</b>	<b>134</b>	<b>184</b>	<b>2</b>	<b>5</b>	<b>8</b>	<b>5</b>	<b>237</b>	<b>8</b>	<b>53</b>
Full-Time	98	41	57	0	1	1	1	50	2	43
Part-Time	220	93	127	2	4	7	4	187	6	10
<b>TOTAL GRADUATE/PROFESSIONAL</b>	<b>8,057</b>	<b>3,681</b>	<b>4,376</b>	<b>29</b>	<b>204</b>	<b>569</b>	<b>88</b>	<b>6,120</b>	<b>128</b>	<b>919</b>
Full-Time	5,848	2,688	3,160	21	173	439	65	4,349	102	699
Part-Time	2,209	993	1,216	8	31	130	23	1,771	26	220

SOURCE: Student Information System

NOTE: Includes Knoxville, Institute of Agriculture, Veterinary Medicine, Space Institute, and Health Science Center

**FULL-TIME EQUIVALENT ENROLLMENT  
BY FULL-TIME/PART-TIME, LEVEL, GENDER, AND RACE  
FALL 2003**

	Total	GENDER		RACE (U.S. Residents Only)						International
		Men	Women	Am. Indian	Asian	Black	Hispanic	White	Not Reported	
<b>TOTAL ENROLLMENT</b>	<b>24,741</b>	<b>11,837</b>	<b>12,904</b>	<b>85</b>	<b>649</b>	<b>1,817</b>	<b>290</b>	<b>20,647</b>	<b>258</b>	<b>997</b>
Full-Time	23,101	11,087	12,014	79	621	1,709	269	19,304	231	887
Part-Time	1,640	750	890	6	28	108	21	1,343	27	110
<b>TOTAL UNDERGRADUATE</b>	<b>17,875</b>	<b>8,747</b>	<b>9,128</b>	<b>59</b>	<b>458</b>	<b>1,306</b>	<b>211</b>	<b>15,457</b>	<b>136</b>	<b>250</b>
Full-Time	17,095	8,383	8,712	56	443	1,252	199	14,786	121	237
Part-Time	780	364	416	3	15	54	12	671	15	13
<b>First-Time Freshmen</b>	<b>3,421</b>	<b>1,668</b>	<b>1,753</b>	<b>15</b>	<b>87</b>	<b>311</b>	<b>36</b>	<b>2,932</b>	<b>21</b>	<b>21</b>
Full-Time	3,392	1,656	1,736	15	86	307	35	2,907	21	21
Part-Time	29	12	17	0	1	4	1	25	0	0
<b>Other Freshmen</b>	<b>1,512</b>	<b>830</b>	<b>682</b>	<b>5</b>	<b>39</b>	<b>136</b>	<b>14</b>	<b>1,296</b>	<b>14</b>	<b>9</b>
Full-Time	1,464	806	658	5	38	130	13	1,256	13	9
Part-Time	48	24	24	0	1	6	1	40	1	0
<b>Sophomore</b>	<b>3,750</b>	<b>1,812</b>	<b>1,938</b>	<b>12</b>	<b>94</b>	<b>278</b>	<b>54</b>	<b>3,249</b>	<b>27</b>	<b>37</b>
Full-Time	3,647	1,763	1,884	11	92	270	50	3,164	24	36
Part-Time	103	49	54	1	2	8	4	85	3	1
<b>Junior</b>	<b>3,802</b>	<b>1,822</b>	<b>1,980</b>	<b>9</b>	<b>95</b>	<b>236</b>	<b>49</b>	<b>3,343</b>	<b>27</b>	<b>44</b>
Full-Time	3,677	1,757	1,920	9	93	229	47	3,232	24	43
Part-Time	125	65	60	0	2	7	2	111	3	1
<b>Senior</b>	<b>5,231</b>	<b>2,548</b>	<b>2,683</b>	<b>18</b>	<b>141</b>	<b>343</b>	<b>56</b>	<b>4,534</b>	<b>43</b>	<b>96</b>
Full-Time	4,825	2,364	2,461	16	133	315	53	4,181	37	90
Part-Time	406	184	222	2	8	28	3	353	6	6
<b>Other Undergraduate</b>	<b>159</b>	<b>67</b>	<b>92</b>	<b>0</b>	<b>2</b>	<b>2</b>	<b>2</b>	<b>103</b>	<b>4</b>	<b>43</b>
Full-Time	90	37	53	0	1	1	1	46	2	38
Part-Time	69	30	39	0	1	1	1	57	2	5
<b>TOTAL GRADUATE/PROFESSIONAL</b>	<b>6,866</b>	<b>3,090</b>	<b>3,776</b>	<b>26</b>	<b>191</b>	<b>511</b>	<b>79</b>	<b>5,190</b>	<b>122</b>	<b>747</b>
Full-Time	6,006	2,704	3,302	23	178	457	70	4,518	110	650
Part-Time	860	386	474	3	13	54	9	672	12	97

SOURCE: Student Information System

NOTES: Due to rounding, totals may not add evenly; includes Knoxville, Institute of Agriculture, Veterinary Medicine, Space Institute, and Health Science Center

# ENROLLMENT BY LEVEL, COLLEGE, RACE, AND GENDER FALL 2003

	TOTAL			AMERICAN INDIAN			ASIAN			BLACK			HISPANIC			WHITE			NOT REPORTED		
	TOTAL	MEN	WOMEN	TOTAL	MEN	WOMEN	TOTAL	MEN	WOMEN	TOTAL	MEN	WOMEN	TOTAL	MEN	WOMEN	TOTAL	MEN	WOMEN	TOTAL	MEN	WOMEN
<b>UNIVERSITY TOTAL</b>	<b>27,281</b>	<b>13,073</b>	<b>14,208</b>	<b>96</b>	<b>41</b>	<b>55</b>	<b>1,454</b>	<b>817</b>	<b>637</b>	<b>2,020</b>	<b>786</b>	<b>1,234</b>	<b>357</b>	<b>174</b>	<b>183</b>	<b>22,988</b>	<b>11,084</b>	<b>11,904</b>	<b>366</b>	<b>171</b>	<b>195</b>
<b>UNDERGRADUATE TOTAL</b>	<b>19,224</b>	<b>9,392</b>	<b>9,832</b>	<b>66</b>	<b>27</b>	<b>39</b>	<b>573</b>	<b>280</b>	<b>293</b>	<b>1,423</b>	<b>605</b>	<b>818</b>	<b>239</b>	<b>122</b>	<b>117</b>	<b>16,713</b>	<b>8,255</b>	<b>8,458</b>	<b>210</b>	<b>103</b>	<b>107</b>
<b>GRADUATE/PROFESSIONAL TOTAL</b>	<b>8,057</b>	<b>3,681</b>	<b>4,376</b>	<b>30</b>	<b>14</b>	<b>16</b>	<b>881</b>	<b>537</b>	<b>344</b>	<b>597</b>	<b>181</b>	<b>416</b>	<b>118</b>	<b>52</b>	<b>66</b>	<b>6,275</b>	<b>2,829</b>	<b>3,446</b>	<b>156</b>	<b>68</b>	<b>88</b>
<b>UNDERGRADUATE</b>																					
Agricultural Sciences & Natural Resources	789	439	350	0	0	0	3	1	2	24	7	17	5	2	3	747	422	325	10	7	3
Architecture & Design	395	186	209	5	3	2	8	8	0	17	9	8	6	3	3	357	161	196	2	2	0
Arts & Sciences	6,623	3,005	3,618	22	6	16	227	92	135	509	196	313	102	51	51	5,708	2,630	3,078	55	30	25
Business Administration	2,838	1,714	1,124	3	3	0	90	42	48	187	95	92	31	16	15	2,507	1,544	963	20	14	6
Communication & Information	1,355	453	902	6	1	5	25	6	19	91	20	71	16	8	8	1,206	417	789	11	1	10
Education, Health & Human Sciences	1,580	492	1,088	2	0	2	30	10	20	130	52	78	13	8	5	1,391	418	973	14	4	10
Engineering	1,705	1,393	312	5	5	0	90	73	17	176	116	60	22	17	5	1,400	1,175	225	12	7	5
Health Science Center	152	11	141	1	0	1	6	1	5	30	2	28	2	0	2	111	7	104	2	1	1
Nursing	724	84	640	6	1	5	13	0	13	56	2	54	1	0	1	643	81	562	5	0	5
Social Work	102	7	95	3	0	3	1	0	1	14	0	14	2	0	2	80	6	74	2	1	1
University	2,961	1,608	1,353	13	8	5	80	47	33	189	106	83	39	17	22	2,563	1,394	1,169	77	36	41
<b>GRADUATE/PROFESSIONAL</b>																					
Agricultural Sciences & Natural Resources	213	115	98	0	0	0	29	17	12	5	2	3	4	1	3	169	95	74	6	0	6
Architecture & Design	34	20	14	0	0	0	3	2	1	1	1	0	0	0	0	25	12	13	5	5	0
Arts & Sciences	1,386	720	666	2	1	1	159	96	63	59	27	32	36	14	22	1,090	563	527	40	19	21
Business Administration	552	347	205	3	2	1	74	45	29	18	10	8	15	9	6	428	274	154	14	7	7
Communication & Information	307	72	235	0	0	0	13	1	12	14	4	10	4	0	4	272	67	205	4	0	4
Education, Health & Human Sciences	1,179	344	835	5	2	3	58	13	45	73	22	51	9	0	9	1,017	304	713	17	3	14
Engineering	758	613	145	3	1	2	269	210	59	33	21	12	11	11	0	431	360	71	11	10	1
Intercollegiate Programs	27	16	11	0	0	0	10	7	3	0	0	0	0	0	0	16	8	8	1	1	0
Law	456	248	208	1	1	0	6	4	2	44	15	29	6	4	2	395	222	173	4	2	2
Health Science Center	1,914	926	988	10	6	4	241	136	105	240	63	177	22	11	11	1,376	696	680	25	14	11
Nursing	165	25	140	0	0	0	3	0	3	4	0	4	0	0	0	156	25	131	2	0	2
Social Work	451	51	400	4	1	3	4	0	4	89	13	76	4	0	4	342	34	308	8	3	5
Veterinary Medicine	274	58	216	0	0	0	1	1	0	2	0	2	2	0	2	251	53	198	18	4	14
University	341	126	215	2	0	2	11	5	6	15	3	12	5	2	3	307	116	191	1	0	1

SOURCE: Student Information System

NOTE: Includes Knoxville, Institute of Agriculture, Veterinary Medicine, Space Institute, and Health Science Center

## ENROLLMENT BY AGE, LEVEL, AND GENDER FALL 2003

	TOTAL				UNDERGRADUATE				GRADUATE/PROFESSIONAL			
	TOTAL	MEN	WOMEN	PERCENT	TOTAL	MEN	WOMEN	PERCENT	TOTAL	MEN	WOMEN	PERCENT
<b>TOTAL</b>	<b>27,281</b>	<b>13,073</b>	<b>14,208</b>	<b>100.0</b>	<b>19,224</b>	<b>9,392</b>	<b>9,832</b>	<b>100.0</b>	<b>8,057</b>	<b>3,681</b>	<b>4,376</b>	<b>100.0</b>
LESS THAN 18	26	12	14	0.1	26	12	14	0.1	0	0	0	0.0
18	2,322	1,059	1,263	8.5	2,321	1,058	1,263	12.1	1	1	0	0.0
19	3,287	1,555	1,732	12.0	3,286	1,555	1,731	17.1	1	0	1	0.0
20	3,317	1,499	1,818	12.2	3,310	1,498	1,812	17.2	7	1	6	0.1
<b>21</b>	<b>3,385</b>	<b>1,585</b>	<b>1,800</b>	<b>12.4</b>	<b>3,320</b>	<b>1,559</b>	<b>1,761</b>	<b>17.3</b>	<b>65</b>	<b>26</b>	<b>39</b>	<b>0.8</b>
22	3,206	1,576	1,630	11.8	2,701	1,434	1,267	14.1	505	142	363	6.3
23	2,186	1,167	1,019	8.0	1,281	781	500	6.7	905	386	519	11.2
24	1,644	806	838	6.0	661	385	276	3.4	983	421	562	12.2
25	1,180	573	607	4.3	410	212	198	2.1	770	361	409	9.6
<b>26</b>	<b>948</b>	<b>514</b>	<b>434</b>	<b>3.5</b>	<b>291</b>	<b>157</b>	<b>134</b>	<b>1.5</b>	<b>657</b>	<b>357</b>	<b>300</b>	<b>8.2</b>
27	687	360	327	2.5	200	113	87	1.0	487	247	240	6.0
28	629	345	284	2.3	175	101	74	0.9	454	244	210	5.6
29	489	263	226	1.8	135	74	61	0.7	354	189	165	4.4
30	409	210	199	1.5	114	60	54	0.6	295	150	145	3.7
<b>31</b>	<b>369</b>	<b>166</b>	<b>203</b>	<b>1.4</b>	<b>117</b>	<b>46</b>	<b>71</b>	<b>0.6</b>	<b>252</b>	<b>120</b>	<b>132</b>	<b>3.1</b>
32	345	174	171	1.3	93	43	50	0.5	252	131	121	3.1
33	285	140	145	1.0	79	35	44	0.4	206	105	101	2.6
34	269	131	138	1.0	80	42	38	0.4	189	89	100	2.3
35	207	104	103	0.8	55	26	29	0.3	152	78	74	1.9
<b>36</b>	<b>188</b>	<b>91</b>	<b>97</b>	<b>0.7</b>	<b>53</b>	<b>26</b>	<b>27</b>	<b>0.3</b>	<b>135</b>	<b>65</b>	<b>70</b>	<b>1.7</b>
37	147	69	78	0.5	35	11	24	0.2	112	58	54	1.4
38	155	72	83	0.6	44	13	31	0.2	111	59	52	1.4
39	145	62	83	0.5	40	16	24	0.2	105	46	59	1.3
40	110	45	65	0.4	35	13	22	0.2	75	32	43	0.9
<b>41 - 45</b>	<b>497</b>	<b>192</b>	<b>305</b>	<b>1.8</b>	<b>149</b>	<b>55</b>	<b>94</b>	<b>0.8</b>	<b>348</b>	<b>137</b>	<b>211</b>	<b>4.3</b>
46 - 50	453	148	305	1.7	116	35	81	0.6	337	113	224	4.2
51 - 64	376	142	234	1.4	85	25	60	0.4	291	117	174	3.6
65 AND OVER	20	13	7	0.1	12	7	5	0.1	8	6	2	0.1

SOURCE: Student Record Master

NOTE: Includes Knoxville, Institute of Agriculture, Veterinary Medicine, Space Institute, and Health Science Center

## DISTRIBUTION OF STUDENT CREDIT HOUR LOADS FALL 2003

CREDIT HOURS	TOTAL	UNDERGRADUATE						GRADUATE	PROFESSIONAL
		FRESHMAN	SOPHOMORE	JUNIOR	SENIOR	5TH YEAR	OTHER		
1	84	2	2	2	7	0	10	61	0
2	26	2	1	3	4	0	3	13	0
3	1,206	9	26	34	129	9	92	906	1
4	142	5	6	9	39	5	24	54	0
5	50	1	0	6	13	0	6	24	0
6	1,328	28	38	61	216	7	43	927	8
7	304	7	22	26	78	5	16	150	0
8	121	4	7	9	27	3	6	65	0
9	1,324	27	39	57	200	4	12	984	1
10	611	33	30	30	79	5	4	430	0
11	319	26	31	25	50	3	4	180	0
12	5,562	500	478	672	1,203	63	42	1,225	1,379
13	2,831	1,072	567	454	477	40	16	180	25
14	2,707	1,208	561	400	370	20	11	74	63
15	4,679	952	760	979	1,142	53	12	532	249
16	2,882	852	720	526	558	53	6	91	76
17	1,357	346	362	355	230	14	6	17	27
18	1,095	92	170	233	438	20	4	28	110
19	416	26	69	91	140	18	0	15	57
20	153	1	5	15	29	2	0	1	100
21	46	0	6	8	29	0	1	0	2
22	21	1	1	2	16	0	0	1	0
23	6	0	1	0	5	0	0	0	0
24	8	0	1	1	5	0	0	1	0
25	0	0	0	0	0	0	0	0	0
over 25	3	0	0	0	3	0	0	0	0
<b>TOTAL</b>	<b>27,281</b>	<b>5,194</b>	<b>3,903</b>	<b>3,998</b>	<b>5,487</b>	<b>324</b>	<b>318</b>	<b>5,959</b>	<b>2,098</b>
<b>AVERAGE CREDIT HOURS</b>	<b>12.8</b>	<b>14.2</b>	<b>14.4</b>	<b>14.3</b>	<b>13.5</b>	<b>13.7</b>	<b>7.4</b>	<b>9.1</b>	<b>13.5</b>

SOURCE: Student Information System

NOTE: Includes Knoxville, Institute of Agriculture, Veterinary Medicine, Space Institute, and Health Science Center



**STUDENT CREDIT HOURS  
BY LEVEL, COLLEGE, AND TERM  
FY 1999-2003**

	SUMMER TERM					FALL TERM					SPRING TERM				
	1998	1999	2000	2001	2002	1998	1999	2000	2001	2002	1999	2000	2001	2002	2003
<b>UNIVERSITY TOTAL</b>	<b>66,460</b>	<b>64,636</b>	<b>62,690</b>	<b>61,220</b>	<b>61,000</b>	<b>315,674</b>	<b>328,687</b>	<b>325,232</b>	<b>328,972</b>	<b>328,855</b>	<b>296,351</b>	<b>305,105</b>	<b>302,838</b>	<b>307,023</b>	<b>302,494</b>
<b>UNDERGRADUATE TOTAL</b>	<b>46,224</b>	<b>44,472</b>	<b>43,550</b>	<b>42,687</b>	<b>43,161</b>	<b>264,619</b>	<b>277,953</b>	<b>275,060</b>	<b>278,412</b>	<b>276,492</b>	<b>246,307</b>	<b>255,672</b>	<b>254,722</b>	<b>256,906</b>	<b>253,133</b>
<b>GRADUATE/PROFESSIONAL TOTAL</b>	<b>20,236</b>	<b>20,164</b>	<b>19,140</b>	<b>18,533</b>	<b>17,839</b>	<b>51,055</b>	<b>50,734</b>	<b>50,172</b>	<b>50,560</b>	<b>52,363</b>	<b>50,044</b>	<b>49,433</b>	<b>48,116</b>	<b>50,117</b>	<b>49,361</b>
<b>UNDERGRADUATE</b>															
Agricultural Sciences & Natural Resources	32	50	38	56	425	7,505	7,920	7,636	8,759	8,553	7,340	7,223	7,072	8,427	8,425
Architecture & Design	589	678	517	555	410	4,966	5,168	5,082	4,727	5,233	4,691	4,770	4,554	4,392	4,651
Arts & Sciences	26,777	25,336	25,233	24,196	23,933	167,111	176,084	173,573	173,696	172,406	150,051	157,069	156,067	155,484	152,444
Business Administration	6,749	7,241	7,368	7,559	8,478	28,117	30,211	31,795	33,146	33,905	27,915	30,801	31,774	32,593	32,667
Communication & Information	2,312	2,169	2,322	2,398	2,392	10,548	11,164	11,760	11,998	12,927	10,446	10,810	11,020	11,507	11,882
Education, Health & Human Sciences	6,584	6,382	5,790	5,869	5,706	24,275	24,406	24,395	24,337	23,236	28,255	27,354	27,235	26,822	25,587
Engineering	2,546	2,156	1,820	1,588	1,257	13,408	13,417	12,453	12,492	12,820	11,754	11,772	11,197	11,449	11,509
Intercollegiate Programs	27	15	12	0	0	3,623	4,475	3,787	4,183	2,082	1,129	1,028	982	1,102	832
Nursing	554	402	381	403	481	3,361	3,608	3,368	3,492	3,625	3,254	3,543	3,723	3,625	3,684
Social Work	42	36	69	60	48	780	669	543	771	843	679	563	540	693	632
University	12	7	0	3	31	925	831	668	811	862	793	739	558	812	820
<b>GRADUATE/PROFESSIONAL</b>															
Agricultural Sciences & Natural Resources	378	430	388	357	297	1,183	1,223	1,160	1,017	1,213	1,346	1,230	1,101	1,113	1,270
Architecture & Design	131	106	16	24	12	623	228	288	334	233	470	252	317	390	289
Arts & Sciences	4,652	4,466	4,292	3,981	3,374	11,288	10,984	10,861	11,243	11,093	10,700	10,755	10,296	10,957	10,898
Biomedical Science	36	60	0	0	0	39	0	0	0	0	45	6	0	0	0
Business Administration	1,801	1,642	1,580	1,517	1,541	6,469	7,181	6,845	6,552	7,233	6,172	6,053	5,952	6,193	4,919
Communication & Information	709	959	908	689	701	1,451	1,511	1,418	1,379	1,493	1,524	1,518	1,342	1,374	1,437
Education, Health & Human Sciences	8,897	8,875	8,350	8,205	7,876	11,565	11,009	10,925	10,159	10,203	12,078	11,602	11,385	11,020	10,668
Engineering	1,419	1,438	1,522	1,370	1,440	3,331	3,376	3,200	3,346	4,168	3,139	3,191	2,870	3,585	4,156
Law	509	319	539	379	223	7,101	7,078	6,916	6,972	6,965	6,956	6,824	6,621	6,668	6,722
Nursing	233	307	322	401	647	1,023	925	842	1,270	1,237	865	849	869	1,070	1,063
Social Work	745	764	506	785	800	2,565	2,613	2,765	2,923	3,049	2,414	2,518	2,464	2,862	2,765
Veterinary Medicine	720	792	708	810	922	4,393	4,594	4,916	5,329	5,440	4,323	4,632	4,869	4,882	5,165
University	6	6	9	15	6	24	12	36	36	36	12	3	30	3	9

SOURCE: Class Tape (14th day)

NOTE: Health Science Center data are not included.

**TOP 10 ENROLLMENT FEEDERS  
BY TENNESSEE COUNTY, STATE, AND COUNTRY  
FALL 2003**

COUNTY	TOTAL	UNDERGRAD	GRAD
TENNESSEE	21,695	16,170	5,525
Knox	7,670	5,614	2,056
Shelby	2,153	1,488	665
Davidson	1,112	807	305
Williamson	1,015	922	93
Blount	911	674	237
Hamilton	894	676	218
Anderson	701	532	169
Sullivan	514	411	103
Sevier	455	372	83
Rutherford	296	220	76

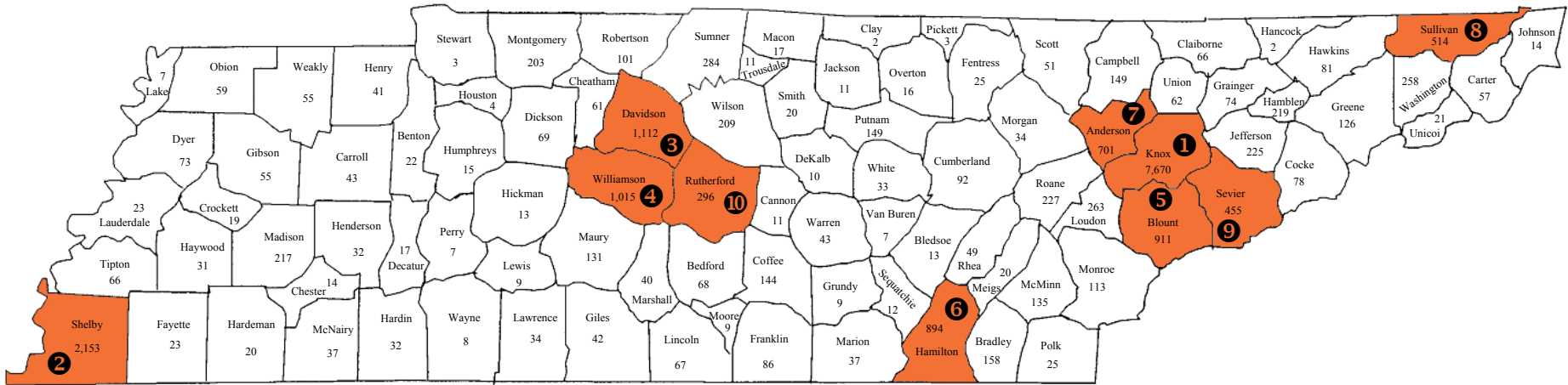
STATE	TOTAL	UNDERGRAD	GRAD
OUT-OF-STATE	4,102	2,616	1,486
Virginia	639	503	136
Georgia	618	472	146
Ohio	397	330	67
North Carolina	385	236	149
Florida	200	134	66
Arkansas	192	41	151
South Carolina	191	130	61
Alabama	171	82	89
Mississippi	167	45	122
Kentucky	160	91	69

COUNTRY	TOTAL	UNDERGRAD	GRAD
INTERNATIONAL	1,484	438	1,046
China	301	13	288
India	227	15	212
Republic of Korea	109	26	83
Canada	31	14	17
Taiwan	28	10	18
Turkey	27	2	25
Japan	27	12	15
United Kingdom	24	17	7
Russia	19	4	15
Thailand	18	1	17

SOURCE: Student Information System

NOTE: Includes Knoxville, Institute of Agriculture, Veterinary Medicine, Space Institute, and Health Science Center

# ENROLLMENT BY COUNTY FALL 2003

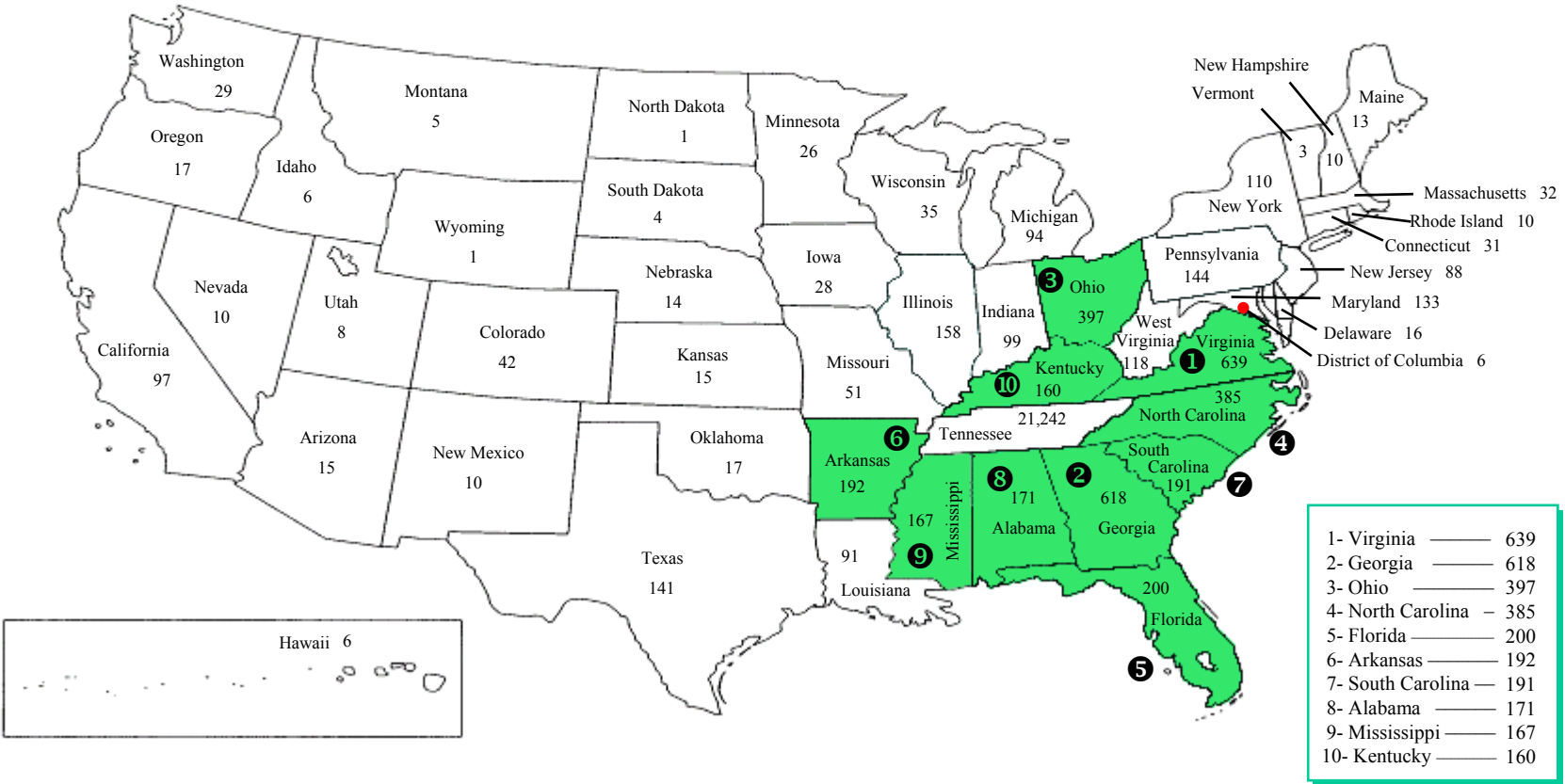
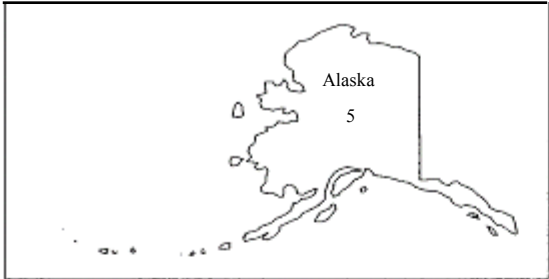


1- Knox	7,670
2- Shelby	2,153
3- Davidson	1,112
4- Williamson	1,015
5- Blount	911
6- Hamilton	894
7- Anderson	701
8- Sullivan	514
9- Sevier	455
10- Rutherford	296

SOURCE: Student Information System

NOTE: Includes Knoxville, Institute of Agriculture, Veterinary Medicine, Space Institute, and Health Science Center

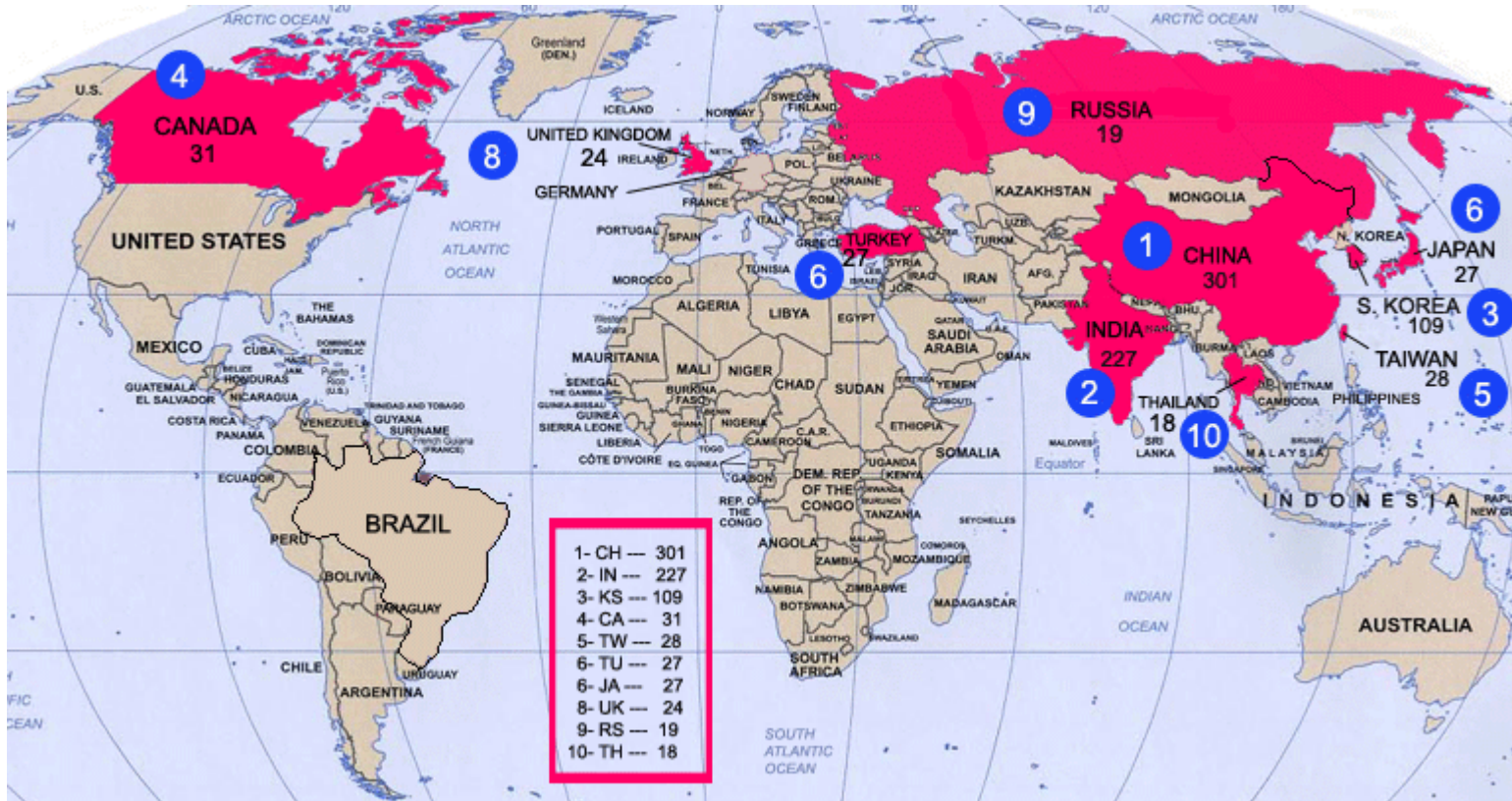
# ENROLLMENT BY STATE FALL 2003



SOURCE: Student Information System

Note: Includes Knoxville, Institute of Agriculture, Veterinary Medicine, Space Institute, and Health Science Center

# ENROLLMENT BY COUNTRY FALL 2003



SOURCE: Student Information System

NOTE: Includes Knoxville, Institute of Agriculture, Veterinary Medicine, Space Institute, and Health Science Center

## ENROLLMENT BY RACE AND GENDER FALL 1988-2003

YEAR	TOTAL			AMERICAN INDIAN			ASIAN			BLACK			HISPANIC			WHITE			NOT REPORTED		
	Total	Men	Women	Total	Men	Women	Total	Men	Women	Total	Men	Women	Total	Men	Women	Total	Men	Women	Total	Men	Women
1988	24,390	12,668	11,722	44	19	25	681	453	228	1,167	501	666	139	89	50	22,359	11,606	10,753	0	0	0
1989	25,016	12,875	12,141	41	21	20	715	467	248	1,237	556	681	168	94	74	22,855	11,737	11,118	0	0	0
1990	25,414	13,086	12,328	44	18	26	787	507	280	1,317	584	733	182	102	80	23,084	11,875	11,209	0	0	0
1991	25,598	13,061	12,537	50	23	27	920	589	331	1,349	599	750	186	99	87	23,093	11,751	11,342	0	0	0
1992	25,998	13,377	12,621	58	35	23	986	632	354	1,414	631	783	226	116	110	23,314	11,963	11,351	0	0	0
1993	25,890	13,157	12,733	79	40	39	1,030	638	392	1,361	598	763	243	118	125	23,177	11,763	11,414	0	0	0
1994	25,412	12,935	12,477	73	37	36	995	612	383	1,320	593	727	256	131	125	22,768	11,562	11,206	0	0	0
1995	25,251	12,534	12,717	86	40	46	995	594	401	1,260	554	706	259	137	122	22,651	11,209	11,442	0	0	0
1996	25,086	12,349	12,737	83	41	42	982	568	414	1,216	506	710	264	141	123	22,541	11,093	11,448	0	0	0
1997	25,039	12,289	12,750	83	47	36	1,006	564	442	1,288	547	741	285	156	129	22,377	10,975	11,402	0	0	0
1998	25,611	12,393	13,218	74	37	37	1,024	570	454	1,414	591	823	295	155	140	22,804	11,040	11,764	0	0	0
1999	25,981	12,493	13,488	84	36	48	1,046	579	467	1,518	602	916	320	164	156	23,013	11,112	11,901	0	0	0
2000	25,474	12,074	13,400	77	32	45	1,083	577	506	1,540	643	897	312	155	157	22,364	10,619	11,745	98	48	50
2001	26,033	12,243	13,790	85	30	55	1,137	630	507	1,669	668	1,001	344	165	179	22,635	10,672	11,963	163	78	85
2002*	27,971	13,285	14,686	101	42	59	1,460	794	666	2,016	764	1,252	368	182	186	23,690	11,353	12,337	336	150	186
2003*	27,281	13,073	14,208	96	41	55	1,454	817	637	2,020	786	1,234	357	174	183	22,988	11,084	11,904	366	171	195

SOURCE: Student Information System

\*Data for 2002 and 2003 include Knoxville, Institute of Agriculture, Veterinary Medicine, Space Institute, and Health Science Center

**TOTAL ENROLLMENT  
BY LEVEL, FULL-TIME AND PART-TIME  
FALL 1999-2003**

	TOTAL					FULL-TIME					PART-TIME				
	1999	2000	2001	2002*	2003*	1999	2000	2001	2002*	2003*	1999	2000	2001	2002*	2003*
<b>TOTAL</b>	<b>25,981</b>	<b>25,474</b>	<b>26,033</b>	<b>27,971</b>	<b>27,281</b>	<b>21,645</b>	<b>21,427</b>	<b>21,940</b>	<b>23,829</b>	<b>23,361</b>	<b>4,336</b>	<b>4,047</b>	<b>4,093</b>	<b>4,142</b>	<b>3,920</b>
First-time Freshmen	4,155	3,833	3,958	3,682	3,579	4,099	3,794	3,898	3,638	3,529	56	39	60	44	50
Other Freshmen	1,908	1,834	1,721	1,683	1,615	1,744	1,683	1,591	1,602	1,521	164	151	130	81	94
Sophomore	4,111	4,239	4,253	4,078	3,903	3,826	3,981	4,024	3,862	3,701	285	258	229	216	202
Undergraduate Special	429	378	327	376	318	95	90	84	119	98	334	288	243	257	220
Junior	3,959	4,054	4,139	4,084	3,998	3,545	3,636	3,795	3,763	3,736	414	418	344	321	262
Senior	5,359	5,324	5,429	5,737	5,487	4,412	4,396	4,511	4,809	4,645	947	928	918	928	842
5th Year Undergraduate	338	347	297	316	324	270	281	232	261	283	68	66	65	55	41
<b>UNDERGRADUATE TOTAL</b>	<b>20,259</b>	<b>20,009</b>	<b>20,124</b>	<b>19,956</b>	<b>19,224</b>	<b>17,991</b>	<b>17,861</b>	<b>18,135</b>	<b>18,054</b>	<b>17,513</b>	<b>2,268</b>	<b>2,148</b>	<b>1,989</b>	<b>1,902</b>	<b>1,711</b>
Graduate Special	363	328	414	409	437	64	76	98	72	104	299	252	316	337	333
Master Candidate	3,363	3,281	3,308	3,753	3,718	2,298	2,279	2,197	2,561	2,522	1,065	1,002	1,111	1,192	1,196
Education Special	62	46	42	56	33	14	6	6	4	5	48	40	36	52	28
Doctoral - Early	1,259	1,129	1,201	1,390	1,453	752	688	719	922	985	507	441	482	468	468
Doctoral - Late	200	225	213	311	314	54	62	59	132	143	146	163	154	179	171
Post Doctoral	2	0	4	3	4	0	0	1	1	0	2	0	3	2	4
<b>GRADUATE TOTAL</b>	<b>5,249</b>	<b>5,009</b>	<b>5,182</b>	<b>5,922</b>	<b>5,959</b>	<b>3,182</b>	<b>3,111</b>	<b>3,080</b>	<b>3,692</b>	<b>3,759</b>	<b>2,067</b>	<b>1,898</b>	<b>2,102</b>	<b>2,230</b>	<b>2,200</b>
Professional 1st	273	272	344	748	725	272	272	344	746	723	1	0	0	2	2
Professional 2nd	56	68	136	430	446	56	68	136	428	444	0	0	0	2	2
Professional 3rd	144	116	229	554	572	144	115	227	550	567	0	1	2	4	5
Professional 4th	0	0	18	361	355	0	0	18	359	355	0	0	0	2	0
<b>PROFESSIONAL TOTAL</b>	<b>473</b>	<b>456</b>	<b>727</b>	<b>2,093</b>	<b>2,098</b>	<b>472</b>	<b>455</b>	<b>725</b>	<b>2,083</b>	<b>2,089</b>	<b>1</b>	<b>1</b>	<b>2</b>	<b>10</b>	<b>9</b>

SOURCE: Student Information System

\*Data for 2002 and 2003 include Knoxville, Institute of Agriculture, Veterinary Medicine, Space Institute, and Health Science Center

**FIRST-TIME FRESHMEN ENROLLMENT  
BY COLLEGE, RACE, AND GENDER  
FALL 2003**

	TOTAL			AMERICAN INDIAN			ASIAN			BLACK			HISPANIC			WHITE			NOT REPORTED		
	Total	Men	Women	Total	Men	Women	Total	Men	Women	Total	Men	Women	Total	Men	Women	Total	Men	Women	Total	Men	Women
<b>TOTAL</b>	<b>3,579</b>	<b>1,741</b>	<b>1,838</b>	<b>16</b>	<b>9</b>	<b>7</b>	<b>98</b>	<b>52</b>	<b>46</b>	<b>326</b>	<b>150</b>	<b>176</b>	<b>37</b>	<b>15</b>	<b>22</b>	<b>3,079</b>	<b>1,506</b>	<b>1,573</b>	<b>23</b>	<b>9</b>	<b>14</b>
<b>COLLEGE</b>																					
Agricultural Sciences & Natural Resources	89	45	44	0	0	0	0	0	0	6	1	5	1	1	0	81	42	39	1	1	0
Architecture & Design	73	31	42	1	1	0	0	0	0	5	3	2	0	0	0	67	27	40	0	0	0
Arts & Sciences	1,160	473	687	5	2	3	49	19	30	113	38	75	14	6	8	975	406	569	4	2	2
Business Administration	538	347	191	1	1	0	7	3	4	54	31	23	3	1	2	470	310	160	3	1	2
Communication & Information	210	65	145	2	1	1	3	1	2	14	3	11	3	1	2	185	59	126	3	0	3
Education, Health & Human Sciences	213	61	152	0	0	0	2	0	2	19	9	10	2	1	1	190	51	139	0	0	0
Engineering	427	361	66	2	2	0	20	17	3	68	47	21	5	5	0	329	289	40	3	1	2
Nursing	153	17	136	3	1	2	0	0	0	17	1	16	0	0	0	131	15	116	2	0	2
Social Work	7	2	5	0	0	0	0	0	0	0	0	0	0	0	0	7	2	5	0	0	0
University	709	339	370	2	1	1	17	12	5	30	17	13	9	0	9	644	305	339	7	4	3

SOURCE: Student Information System

NOTE: The Health Science Center does not enroll first-time freshmen



## APPLIED, ADMITTED, AND ENROLLED FRESHMEN FALL 1984-2003

Year	Number Applied	Number Admitted	Percentage of Applicants Admitted	Number Enrolled	Percentage of Applicants Enrolled	Percentage of Admitted Enrolled
1984	6,153	4,679	76%	3,353	54%	72%
1985	6,139	4,891	80%	3,494	57%	71%
1986	6,699	5,334	80%	3,699	55%	69%
1987	6,892	5,530	80%	3,834	56%	69%
1988	7,822	6,021	77%	3,795	49%	63%
1989	7,222	5,739	79%	3,390	47%	59%
1990	7,526	5,816	77%	3,418	45%	59%
1991	6,994	5,070	72%	3,060	44%	60%
1992	7,583	5,573	73%	3,219	42%	58%
1993	7,473	5,372	72%	3,013	40%	56%
1994	7,027	5,179	74%	2,912	41%	56%
1995	8,305	5,977	72%	3,506	42%	59%
1996	8,630	6,438	75%	3,692	43%	57%
1997	8,923	6,740	76%	3,890	44%	58%
1998	9,464	7,177	76%	3,806	40%	53%
1999	10,634	7,148	67%	4,155	39%	58%
2000	10,171	6,344	62%	3,833	38%	60%
2001	8,263	5,675	69%	3,958	48%	70%
2002	9,724	5,629	58%	3,682	38%	65%
2003	9,514	6,790	71%	3,579	38%	53%

SOURCE: Office of Enrollment Services

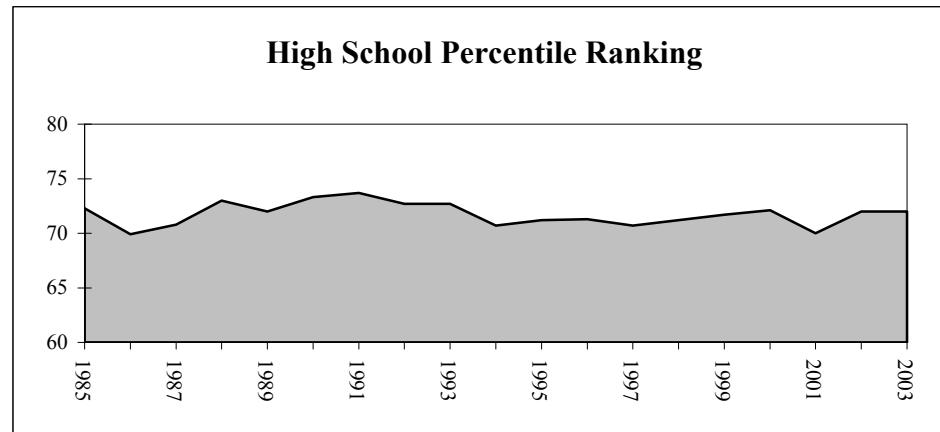
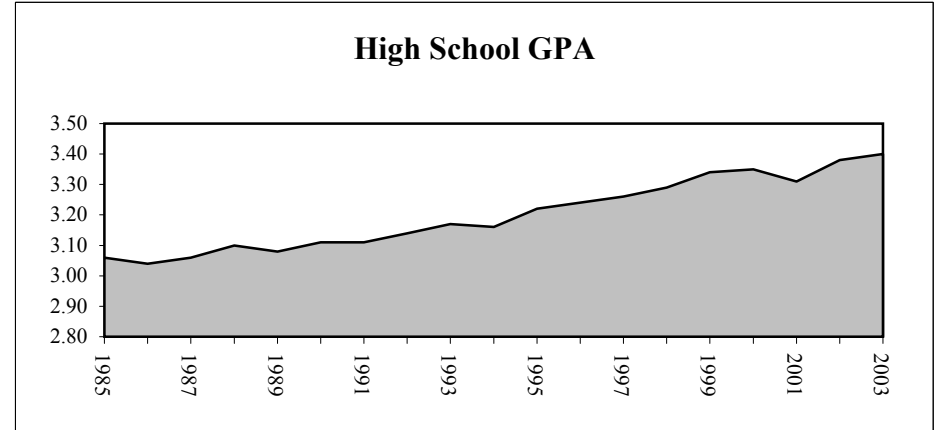
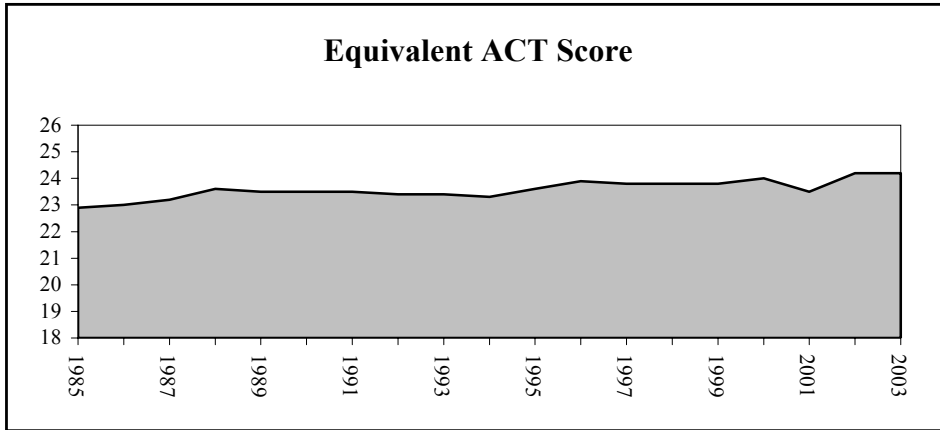
# AVERAGE TEST SCORE, HIGH SCHOOL GPA, AND CLASS RANKING FOR FIRST-TIME FRESHMEN FALL 1990-2003

	1990	1991	1992	1993	1994	1995	1996	1997	1998	1999	2000	2001	2002	2003
<b>Equivalent ACT</b>														
Number	3,317	2,989	3,160	2,960	2,867	3,458	3,649	3,851	3,781	4,132	3,818	3,932	3,662	3,556
Average	23.5	23.5	23.4	23.4	23.3	23.6	23.9	23.8	23.8	23.8	24.0	23.5	24.2	24.2
<b>ACT Composite</b>														
Number	2,958	2,611	2,742	2,618	2,539	3,067	3,240	3,356	3,294	3,581	3,303	3,411	3,138	3,086
Average	23.3	23.3	23.2	23.1	23.1	23.4	23.6	23.6	23.6	23.6	23.9	23.4	24.0	24.1
<b>SAT Total</b>														
Number	1,394	1,370	1,439	1,287	1,181	1,478	1,665	1,771	1,734	1,829	1,741	1,714	1,699	1,634
Average	1,091	1,093	1,089	1,095	1,097	1,106	1,113	1,101	1,104	1,103	1,113	1,092	1,110	1,116
<b>High School GPA</b>														
Number	3,362	3,026	3,172	2,982	2,896	3,473	3,657	3,869	3,777	4,131	3,818	3,932	3,666	3,567
Average	3.11	3.11	3.14	3.17	3.16	3.22	3.24	3.26	3.29	3.34	3.35	3.31	3.38	3.40
3.50 - 4.00	887	783	890	911	890	1,142	1,212	1,398	1,459	1,748	1,612	1,677	1,714	1,640
3.00 - 3.49	1,080	1,001	1,001	955	929	1,143	1,050	1,284	1,255	1,377	1,335	1,214	1,113	1,123
2.50 - 2.99	948	844	919	788	739	876	716	921	853	814	699	751	633	635
2.00 - 2.49	437	388	346	314	329	299	250	255	208	189	168	266	182	157
< 2.00	10	10	16	14	9	13	0	11	2	3	4	24	24	12
<b>High School Percentile Ranking</b>														
Number	2,524	2,295	2,379	2,139	2,003	2,322	2,149	2,079	2,055	2,096	1,962	3,257	2,930	2,778
Average	73	74	73	73	71	71	71	71	72	72	72	70	72	72
76 - 99	1,380	1,257	1,267	1,151	970	1,154	1,106	1,045	1,054	1,088	1,035	1,647	1,579	1,485
51 - 75	749	701	707	627	639	745	653	637	613	657	594	983	845	839
26 - 50	334	294	331	305	332	364	320	338	327	291	276	480	409	383
1 - 25	61	43	74	56	62	59	70	59	61	60	57	147	97	71

SOURCE: Student Information System and Student Record Master

NOTE: Equivalent ACT scores are a combination of the higher of the ACT composite or SAT total scores presented on an ACT scale.

# AVERAGE EQUIVALENT ACT SCORES, HIGH SCHOOL GPA AND CLASS RANKING FOR FIRST-TIME FRESHMEN FALL 1985-2003



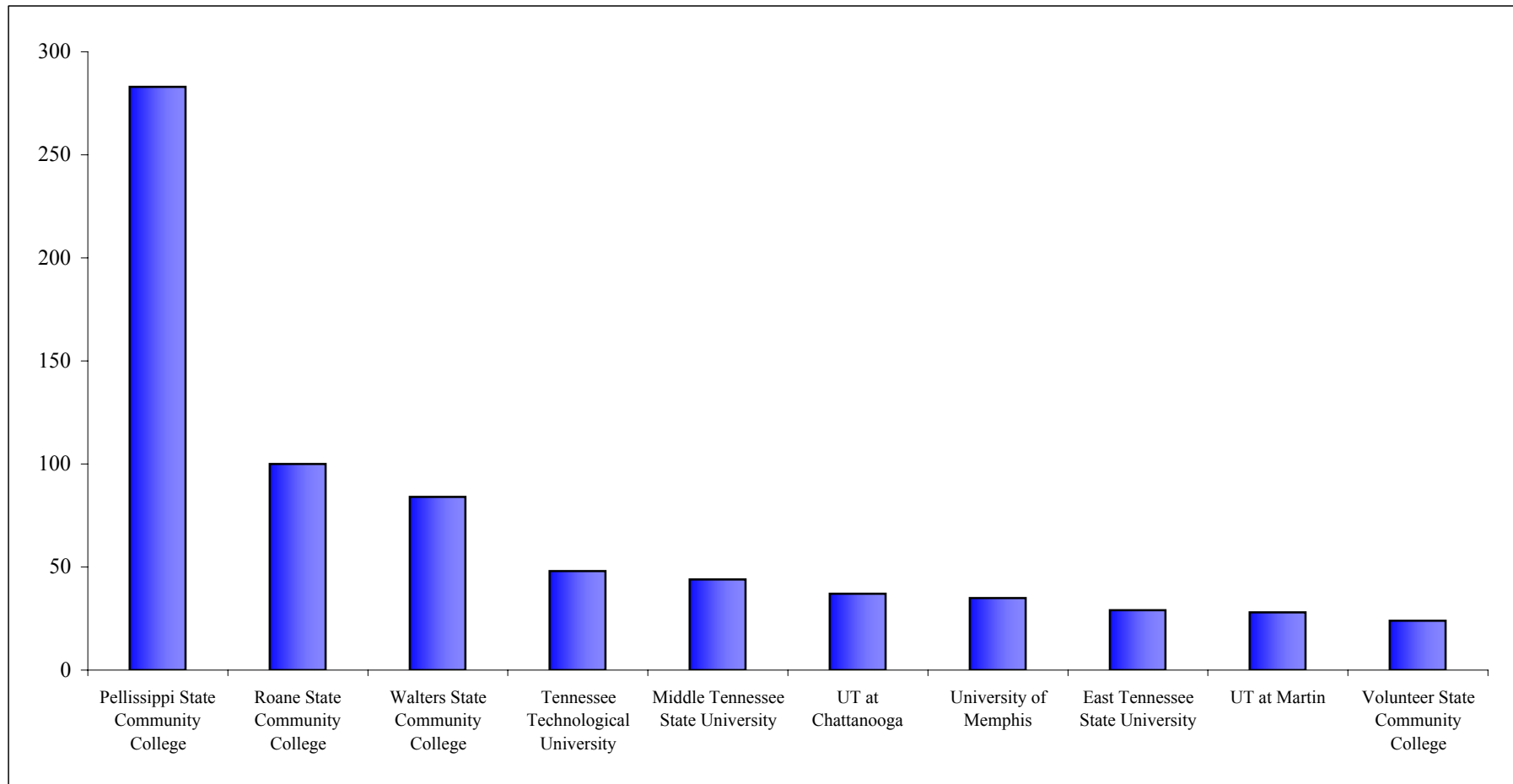
SOURCES: Student Information System and Student Record Master

# UNDERGRADUATE TRANSFER ENROLLMENT BY COLLEGE, RACE, AND GENDER FALL 2003

	TOTAL			AMERICAN INDIAN			ASIAN			BLACK			HISPANIC			WHITE			NOT REPORTED		
	Total	Men	Women	Total	Men	Women	Total	Men	Women	Total	Men	Women	Total	Men	Women	Total	Men	Women	Total	Men	Women
<b>TOTAL</b>	<b>1,384</b>	<b>624</b>	<b>760</b>	<b>5</b>	<b>1</b>	<b>4</b>	<b>35</b>	<b>18</b>	<b>17</b>	<b>79</b>	<b>26</b>	<b>53</b>	<b>24</b>	<b>11</b>	<b>13</b>	<b>1,221</b>	<b>555</b>	<b>666</b>	<b>20</b>	<b>13</b>	<b>7</b>
<b>COLLEGE</b>																					
Agricultural Sciences & Natural Resources	73	44	29	0	0	0	0	0	0	2	1	1	2	0	2	68	42	26	1	1	0
Architecture & Design	8	1	7	0	0	0	0	0	0	0	0	0	0	0	0	8	1	7	0	0	0
Arts & Sciences	441	174	267	0	0	0	11	5	6	26	11	15	11	4	7	385	149	236	8	5	3
Business Administration	146	83	63	0	0	0	4	2	2	4	1	3	0	0	0	136	78	58	2	2	0
Communication & Information	69	31	38	1	0	1	2	1	1	1	0	1	3	3	0	62	27	35	0	0	0
Education, Health & Human Sciences	122	40	82	0	0	0	3	1	2	7	5	2	2	2	0	107	32	75	3	0	3
Engineering	96	81	15	0	0	0	8	6	2	5	3	2	1	1	0	81	70	11	1	1	0
Health Science Center	89	5	84	0	0	0	3	1	2	19	1	18	2	0	2	65	3	62	0	0	0
Nursing	80	14	66	2	0	2	2	0	2	2	0	2	0	0	0	74	14	60	0	0	0
Social Work	12	0	12	0	0	0	0	0	0	3	0	3	0	0		9	0	9	0	0	0
University	248	151	97	2	1	1	2	2	0	10	4	6	3	1	2	226	139	87	5	4	1

SOURCE: Student Information System

## UNDERGRADUATE TRANSFER ENROLLMENT TOP TEN FEEDER INSTITUTIONS FALL 2003



SOURCE: Student Information System

NOTE: Includes Knoxville, Institute of Agriculture, Veterinary Medicine, Space Institute, and Health Science Center

**APPLIED, ADMITTED, AND ENROLLED  
UNDERGRADUATE TRANSFER STUDENTS  
FALL 1984-2003**

Year	Number Applied	Number Admitted	Percentage of Applicants Admitted	Number Enrolled	Percentage of Applicants Enrolled	Percentage of Admitted Enrolled
1984	2,287	1,699	74%	1,374	60%	81%
1985	2,003	1,489	74%	1,045	52%	70%
1986	2,119	1,603	76%	1,097	52%	68%
1987	1,882	1,350	72%	934	50%	69%
1988	2,080	1,461	70%	938	45%	64%
1989	2,235	1,615	72%	1,097	49%	68%
1990	2,576	1,837	71%	1,226	48%	67%
1991	2,662	1,868	70%	1,249	47%	67%
1992	2,725	1,938	71%	1,481	54%	76%
1993	2,898	2,084	72%	1,586	55%	76%
1994	2,956	2,141	72%	1,624	55%	76%
1995	2,830	1,987	70%	1,352	48%	68%
1996	2,784	1,991	72%	1,434	52%	72%
1997	2,554	1,829	72%	1,173	46%	64%
1998	2,489	1,730	70%	1,214	49%	70%
1999	2,647	1,826	69%	1,427	54%	78%
2000	2,479	1,754	71%	1,246	50%	71%
2001	2,208	1,727	78%	1,411	64%	82%
2002*	2,449	1,688	69%	1,372	56%	81%
2003*	2,319	1,652	71%	1,384	60%	84%

SOURCE: Office of Enrollment Services

\*Data for 2002 and 2003 include Knoxville, Institute of Agriculture, Veterinary Medicine, Space Institute, and Health Science Center

**UNDERGRADUATE ENROLLMENT  
BY RACE AND GENDER  
FALL 1988-2003**

YEAR	TOTAL			AMERICAN INDIAN			ASIAN			BLACK			HISPANIC			WHITE			NOT REPORTED		
	Total	Men	Women	Total	Men	Women	Total	Men	Women	Total	Men	Women	Total	Men	Women	Total	Men	Women	Total	Men	Women
1988	18,770	9,811	8,959	25	11	14	329	193	136	863	390	473	74	47	27	17,479	9,170	8,309	0	0	0
1989	19,067	9,891	9,176	26	14	12	339	196	143	900	422	478	94	51	43	17,708	9,208	8,500	0	0	0
1990	19,532	10,052	9,480	28	11	17	371	216	155	997	455	542	106	58	48	18,030	9,312	8,718	0	0	0
1991	19,385	9,951	9,434	33	16	17	452	268	184	1,033	469	564	103	55	48	17,764	9,143	8,621	0	0	0
1992	19,342	10,095	9,247	41	25	16	510	306	204	1,043	485	558	144	79	65	17,604	9,200	8,404	0	0	0
1993	18,986	9,770	9,216	52	28	24	543	312	231	990	453	537	157	83	74	17,244	8,894	8,350	0	0	0
1994	18,608	9,611	8,997	46	24	22	524	307	217	946	442	504	177	95	82	16,915	8,743	8,172	0	0	0
1995	18,735	9,470	9,265	53	27	26	571	324	247	864	404	460	179	98	81	17,068	8,617	8,451	0	0	0
1996	18,826	9,474	9,352	52	26	26	570	304	266	864	395	469	199	107	92	17,141	8,642	8,499	0	0	0
1997	19,061	9,520	9,541	55	33	22	637	335	302	972	447	525	210	116	94	17,187	8,589	8,598	0	0	0
1998	19,692	9,716	9,976	52	29	23	627	325	302	1,087	482	605	219	117	102	17,707	8,763	8,944	0	0	0
1999	20,259	9,912	10,347	64	31	33	604	315	289	1,196	501	695	234	125	109	18,161	8,940	9,221	0	0	0
2000	20,009	9,718	10,291	60	28	32	585	293	292	1,222	541	681	237	127	110	17,822	8,686	9,136	83	43	40
2001	20,124	9,736	10,388	64	26	38	592	313	279	1,310	559	751	249	123	126	17,775	8,649	9,126	134	66	68
2002*	19,956	9,710	10,246	76	32	44	630	307	323	1,399	584	815	263	131	132	17,383	8,560	8,823	205	96	109
2003*	19,224	9,392	9,832	66	27	39	573	280	293	1,423	605	818	239	122	117	16,713	8,255	8,458	210	103	107

SOURCE: Student Information System

\*Data for 2002 and 2003 include Knoxville, Institute of Agriculture, Veterinary Medicine, Space Institute, and Health Science Center

**FIRST-TIME GRADUATE AND PROFESSIONAL HEADCOUNT  
BY COLLEGE, RACE, AND GENDER  
FALL 2003**

	TOTAL			AMERICAN INDIAN			ASIAN			BLACK			HISPANIC			WHITE			NOT REPORTED		
	Total	Men	Women	Total	Men	Women	Total	Men	Women	Total	Men	Women	Total	Men	Women	Total	Men	Women	Total	Men	Women
<b>TOTAL</b>	<b>2,043</b>	<b>862</b>	<b>1,181</b>	<b>7</b>	<b>2</b>	<b>5</b>	<b>190</b>	<b>121</b>	<b>69</b>	<b>138</b>	<b>40</b>	<b>98</b>	<b>29</b>	<b>10</b>	<b>19</b>	<b>1,660</b>	<b>681</b>	<b>979</b>	<b>19</b>	<b>8</b>	<b>11</b>
<b>COLLEGE</b>																					
Agricultural Sciences & Natural Resources	50	28	22	0	0	0	3	3	0	2	0	2	1	0	1	44	25	19	0	0	0
Architecture & Design	5	1	4	0	0	0	1	0	1	0	0	0	0	0	0	4	1	3	0	0	0
Arts & Sciences	433	226	207	0	0	0	43	27	16	17	8	9	10	4	6	361	186	175	2	1	1
Business Administration	182	106	76	0	0	0	20	11	9	5	3	2	6	3	3	149	89	60	2	0	2
Communication & Information	91	29	62	0	0	0	1	0	1	3	2	1	0	0	0	87	27	60	0	0	0
Education, Health & Human Sciences	408	96	312	2		2	14	3	11	22	5	17	4	0	4	363	88	275	3	0	3
Engineering	220	180	40	1	0	1	69	55	14	12	7	5	2	2	0	134	115	19	2	1	1
Health Science Center	147	50	97	1	1	0	30	19	11	24	3	21	1	0	1	86	23	63	5	4	1
Intercollegiate Programs	8	4	4	0	0	0	2	1	1	0	0	0	0	0	0	6	3	3	0	0	0
Law	122	67	55	1	1	0	0	0	0	14	6	8	1	1	0	105	58	47	1	1	0
Nursing	26	6	20	0	0	0	0	0	0	0	0	0	0	0	0	25	6	19	1	0	1
Social Work	165	17	148	2	0	2	2	0	2	31	5	26	1	0	1	127	11	116	2	1	1
Veterinary Medicine	43	4	39	0	0	0	0	0	0	0	0	0	1	0	1	42	4	38	0	0	0
University	143	48	95	0	0	0	5	2	3	8	1	7	2	0	2	127	45	82	1	0	1

SOURCE: Student Information System

NOTE: Includes Knoxville, Institute of Agriculture, Veterinary Medicine, Space Institute, and Health Science Center



**GRADUATE ENROLLMENT  
BY RACE AND GENDER  
FALL 1988-2003**

YEAR	TOTAL			AMERICAN INDIAN			ASIAN			BLACK			HISPANIC			WHITE			NOT REPORTED		
	Total	Men	Women	Total	Men	Women	Total	Men	Women	Total	Men	Women	Total	Men	Women	Total	Men	Women	Total	Men	Women
1988	5,620	2,857	2,763	19	8	11	352	260	92	304	111	193	65	42	23	4,880	2,436	2,444	0	0	0
1989	5,949	2,984	2,965	15	7	8	376	271	105	337	134	203	74	43	31	5,147	2,529	2,618	0	0	0
1990	5,882	3,034	2,848	16	7	9	416	291	125	320	129	191	76	44	32	5,054	2,563	2,491	0	0	0
1991	6,213	3,110	3,103	17	7	10	468	321	147	316	130	186	83	44	39	5,329	2,608	2,721	0	0	0
1992	6,656	3,282	3,374	17	10	7	476	326	150	371	146	225	82	37	45	5,710	2,763	2,947	0	0	0
1993	6,904	3,387	3,517	27	12	15	487	326	161	371	145	226	86	35	51	5,933	2,869	3,064	0	0	0
1994	6,804	3,324	3,480	27	13	14	471	305	166	374	151	223	79	36	43	5,853	2,819	3,034	0	0	0
1995	6,516	3,064	3,452	33	13	20	424	270	154	396	150	246	80	39	41	5,583	2,592	2,991	0	0	0
1996	6,260	2,875	3,385	31	15	16	412	264	148	352	111	241	65	34	31	5,400	2,451	2,949	0	0	0
1997	5,978	2,769	3,209	28	14	14	369	229	140	316	100	216	75	40	35	5,190	2,386	2,804	0	0	0
1998	5,919	2,677	3,242	22	8	14	397	245	152	327	109	218	76	38	38	5,097	2,277	2,820	0	0	0
1999	5,722	2,581	3,141	20	5	15	442	264	178	322	101	221	86	39	47	4,852	2,172	2,680	0	0	0
2000	5,465	2,356	3,109	17	4	13	498	284	214	318	102	216	75	28	47	4,542	1,933	2,609	15	5	10
2001	5,909	2,507	3,402	21	4	17	545	317	228	359	109	250	95	42	53	4,860	2,023	2,837	29	12	17
2002*	8,015	3,575	4,440	25	10	15	830	487	343	617	180	437	105	51	54	6,307	2,793	3,514	131	54	77
2003*	8,057	3,681	4,376	30	14	16	881	537	344	597	181	416	118	52	66	6,275	2,829	3,446	156	68	88

SOURCE: Student Information System

\*Data for 2002 and 2003 include Knoxville, Institute of Agriculture, Veterinary Medicine, Space Institute, and Health Science Center

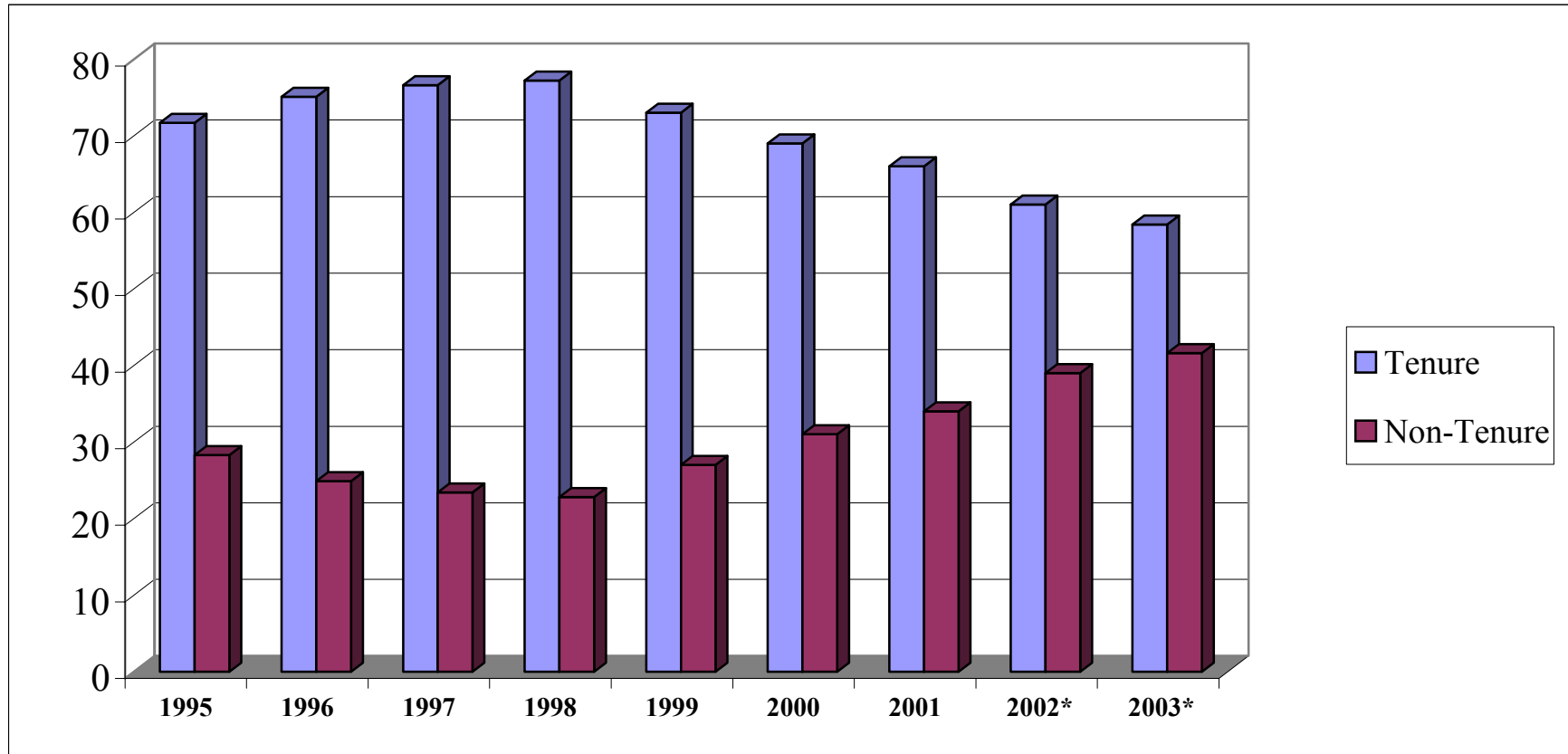
**FULL-TIME INSTRUCTIONAL FACULTY  
BY APPOINTMENT TYPE, RANK, TENURE STATUS, AND COLLEGE  
FALL 2003**

	Number of Faculty	Appointment		Academic Rank					Tenure Status		
		9-Month	12-Month	Professor	Associate Professor	Assistant Professor	Instructor	Lecturer	Tenured	On-Track	Non-Tenured
		<b>UNIVERSITY TOTAL</b>	<b>1,441</b>	<b>1,089</b>	<b>352</b>	<b>591</b>	<b>364</b>	<b>313</b>	<b>36</b>	<b>137</b>	<b>841</b>
<b>UNIVERSITY PERCENTAGES</b>	<b>100.0</b>	<b>75.6</b>	<b>24.4</b>	<b>41.0</b>	<b>25.3</b>	<b>21.7</b>	<b>2.5</b>	<b>9.5</b>	<b>58.4</b>	<b>27.7</b>	<b>13.9</b>
Agricultural Sciences & Natural Resources	135	3	132	66	36	30	3	0	94	37	4
Architecture & Design	27	24	3	9	10	6	0	2	16	9	2
Arts & Sciences - Humanities	251	250	1	79	53	51	3	65	126	54	71
Arts & Sciences - Natural Sciences	203	189	14	107	24	42	1	29	126	46	31
Arts & Sciences - Social Sciences	138	135	3	58	31	30	3	16	85	35	18
Business Administration	104	104	0	38	28	19	3	16	60	23	21
Communication & Information	48	46	2	13	18	12	2	3	28	16	4
Education, Health & Human Sciences	133	119	14	57	33	30	8	5	67	47	19
Engineering	140	138	2	76	39	23	1	1	98	39	3
Health Science Center	113	0	113	39	39	33	2	0	63	41	9
Law	30	29	1	17	13	0	0	0	21	8	1
Nursing	31	30	1	3	6	14	8	0	7	12	12
Social Work	23	22	1	5	7	11	0	0	9	14	0
Veterinary Medicine	65	0	65	24	27	12	2	0	41	18	6

SOURCE: IRIS

NOTE: Includes Knoxville, Institute of Agriculture, Veterinary Medicine, Space Institute, and Health Science Center

**TENURED AND NON-TENURED FULL-TIME INSTRUCTIONAL FACULTY  
FALL 1995-2003  
(AS PERCENTAGES)**



Source: IRIS

\*Data for 2002 and 2003 include Knoxville, Institute of Agriculture, Veterinary Medicine, Space Institute, and Health Science Center

**FULL-TIME INSTRUCTIONAL FACULTY  
BY GENDER, HIGHEST DEGREE HELD, AND RACE  
FALL 2003**

	Number of Faculty	GENDER		HIGHEST DEGREE HELD					RACE				
		Male	Female	PhD	Profes- sional	MA	BA	HS	American Indian	Asian	Black	Hispanic	White
<b>UNIVERSITY TOTAL</b>	<b>1,441</b>	<b>975</b>	<b>466</b>	<b>1,076</b>	<b>122</b>	<b>212</b>	<b>30</b>	<b>1</b>	<b>3</b>	<b>96</b>	<b>57</b>	<b>23</b>	<b>1,262</b>
<b>UNIVERSITY PERCENTAGES</b>	<b>100.0</b>	<b>67.7</b>	<b>32.3</b>	<b>74.7</b>	<b>8.5</b>	<b>14.7</b>	<b>2.1</b>	<b>0.1</b>	<b>0.2</b>	<b>6.7</b>	<b>4.0</b>	<b>1.6</b>	<b>87.6</b>
Agricultural Sciences & Natural Resources	135	117	18	126	1	6	2	0	0	6	2	0	127
Architecture & Design	27	21	6	6	0	19	2	0	0	1	0	0	26
Arts & Sciences - Humanities	251	137	114	147	2	90	11	1	0	6	11	13	221
Arts & Sciences - Natural Sciences	203	170	33	181	1	19	2	0	1	21	0	4	177
Arts & Sciences - Social Sciences	138	89	49	132	0	4	2	0	0	7	7	2	122
Business Administration	104	77	27	88	2	11	3	0	1	8	2	1	92
Communication & Information	48	24	24	41	0	6	1	0	0	3	1	0	44
Education, Health & Human Sciences	133	57	76	119	0	13	1	0	1	7	11	0	114
Engineering	140	134	6	136	1	1	2	0	0	24	3	1	112
Health Science Center	113	67	46	42	49	21	1	0	0	7	11	0	95
Law	30	20	10	6	19	5	0	0	0	0	3	0	27
Nursing	31	1	30	18	0	12	1	0	0	2	1	1	27
Social Work	23	13	10	17	1	5	0	0	0	0	4	0	19
Veterinary Medicine	65	48	17	17	46	0	2	0	0	4	1	1	59

SOURCE: IRIS

NOTE: Includes Knoxville, Institute of Agriculture, Veterinary Medicine, Space Institute, and Health Science Center

**AGE AND LENGTH OF SERVICE OF FULL-TIME INSTRUCTIONAL FACULTY  
FALL 1997-2003  
(AS PERCENTAGES)**

Age Distribution	Fall 1997	Fall 1998	Fall 1999	Fall 2000	Fall 2001	Fall 2002*	Fall 2003*
< 30	1.0	0.6	1.0	1.4	1.6	1.9	1.7
30-39	15.6	15.5	12.8	13.4	14.2	17.2	17.8
40-49	31.4	32.0	31.4	31.9	31.2	28.8	27.3
50-59	32.6	33.6	35.4	34.4	34.7	33.5	33.3
60-65	14.4	14.0	14.7	14.1	14.1	14.1	15.0
> 65	5.0	4.2	4.7	4.7	4.3	4.5	5.0

Length of Service	Fall 1997	Fall 1998	Fall 1999	Fall 2000	Fall 2001	Fall 2002*	Fall 2003*
0 - 4	19.1	19.0	16.3	19.2	17.1	31.3	32.3
5 - 9	17.5	17.5	18.7	18.7	18.6	13.5	13.0
10 - 14	12.7	13.5	14.6	13.7	15.3	13.2	13.9
15 - 19	12.5	12.2	11.9	11.4	11.6	10.7	11.0
>19	38.3	37.8	38.4	37.0	37.4	31.2	29.8

SOURCE: IRIS

\*Data for 2002 and 2003 include Knoxville, Institute of Agriculture, Veterinary Medicine, Space Institute and Health Science Center

**DISTRIBUTION OF EMPLOYEES  
BY EEO CATEGORY  
FALL 2003**

EEO CATEGORY	TOTAL NUMBER	MALE		FEMALE		BLACK		WHITE		TOTAL MINORITY	
		#	%	#	%	#	%	#	%	#	%
<b>UNIVERSITY TOTALS</b>	<b>14,105</b>	<b>6,491</b>	<b>46.02</b>	<b>7,614</b>	<b>53.98</b>	<b>1,726</b>	<b>12.24</b>	<b>11,580</b>	<b>82.10</b>	<b>2,525</b>	<b>17.90</b>
<b>EXECUTIVE/ADMINISTRATIVE/MANAGERIAL</b>	<b>640</b>	<b>351</b>	<b>54.84</b>	<b>289</b>	<b>45.16</b>	<b>48</b>	<b>7.50</b>	<b>583</b>	<b>91.09</b>	<b>57</b>	<b>8.91</b>
Executive	101	67	66.34	34	33.66	9	8.91	92	91.09	9	8.91
Administrative	539	284	52.69	255	47.31	39	7.24	491	91.09	48	8.91
<b>FACULTY</b>	<b>3,234</b>	<b>2,113</b>	<b>65.34</b>	<b>1,121</b>	<b>34.66</b>	<b>125</b>	<b>3.87</b>	<b>2,795</b>	<b>86.43</b>	<b>439</b>	<b>13.57</b>
Professor	959	802	83.63	157	16.37	16	1.67	883	92.08	76	7.92
Associate Professor	740	497	67.16	243	32.84	35	4.73	637	86.08	103	13.92
Assistant Professor	754	471	62.47	283	37.53	35	4.64	590	78.25	164	21.75
Instructor	165	77	46.67	88	53.33	12	7.27	134	81.21	31	18.79
Lecturer	342	149	43.57	193	56.43	10	2.92	304	88.89	38	11.11
Other Faculty	274	117	42.70	157	57.30	17	6.20	247	90.15	27	9.85
<b>PROFESSIONAL</b>	<b>3,110</b>	<b>1,200</b>	<b>38.59</b>	<b>1,910</b>	<b>61.41</b>	<b>255</b>	<b>8.20</b>	<b>2,596</b>	<b>83.47</b>	<b>514</b>	<b>16.53</b>
Professional	3,110	1,200	38.59	1,910	61.41	255	8.20	2,596	83.47	514	16.53
<b>SECRETARIAL/CLERICAL</b>	<b>2,956</b>	<b>294</b>	<b>9.95</b>	<b>2,662</b>	<b>90.05</b>	<b>537</b>	<b>18.17</b>	<b>2,372</b>	<b>80.24</b>	<b>584</b>	<b>19.76</b>
Supervisory	90	37	41.11	53	58.89	13	14.44	75	83.33	15	16.67
Non-Supervisory	2,866	257	8.97	2,609	91.03	524	18.28	2,297	80.15	569	19.85
<b>TECHNICAL/PARAPROFESSIONAL</b>	<b>1,345</b>	<b>509</b>	<b>37.84</b>	<b>836</b>	<b>62.16</b>	<b>194</b>	<b>14.42</b>	<b>1,048</b>	<b>77.92</b>	<b>297</b>	<b>22.08</b>
Supervisory	29	16	55.17	13	44.83	3	10.34	24	82.76	5	17.24
Non-Supervisory	1,316	493	37.46	823	62.54	191	14.51	1,024	77.81	292	22.19
<b>SKILLED CRAFTS</b>	<b>520</b>	<b>489</b>	<b>94.04</b>	<b>31</b>	<b>5.96</b>	<b>55</b>	<b>10.58</b>	<b>456</b>	<b>87.69</b>	<b>64</b>	<b>12.31</b>
Supervisory	64	64	100.00	0	0.00	6	9.38	58	90.63	6	9.38
Non-Supervisory	456	425	93.20	31	6.80	49	10.75	398	87.28	58	12.72
<b>SERVICE MAINTENANCE</b>	<b>2,300</b>	<b>1,535</b>	<b>66.74</b>	<b>765</b>	<b>33.26</b>	<b>512</b>	<b>22.26</b>	<b>1,730</b>	<b>75.22</b>	<b>570</b>	<b>24.78</b>
Supervisory	116	73	62.93	43	37.07	38	32.76	78	67.24	38	32.76
Non-Supervisory	2,184	1,462	66.94	722	33.06	474	21.70	1,652	75.64	532	24.36

SOURCE: IRIS

NOTE: Includes Knoxville, Institute of Agriculture, Veterinary Medicine, Space Institute, Health Science Center, and clinical programs

## CHAIRS OF EXCELLENCE FILLED AS OF OCTOBER 2003

CHAIR NAME	CHAIRHOLDER	CHAIR NAME	CHAIRHOLDER
<b>Knoxville</b>		<b>Health Science Center</b>	
Ivan Racheff Chair of Ornamental Horticulture	Dr. Neal Stewart	Harriet S. Van Vleet Chair in Microbiology and Immunology	Dr. Terrence G. Cooper
Ivan Racheff Chair of Materials Science & Engineering	Dr. Peter K. Liaw	Harriet S. Van Vleet Chair in Pharmacology	Dr. Burt M. Sharp
Hodges Chair of English	Dr. Richard J. Finnerran	Harriet S. Van Vleet Chair in Biochemistry	Dr. John N. Fain
Condra Chair of Computer Integrated Engineering & Manufacturing	vacant	Harriet S. Van Vleet Chair in Virology	Dr. Martha M. Howe
Condra Chair of Power Electronics Applications	Dr. Bimal K. Bose	E. Eric Muirhead Chair in Pathology	Dr. Lawrence Pfeffer
Goodrich Chair in Transportation	Dr. Thomas Urbanik, III	Crippled Children's Hospital Foundation Chair in Biomedical Engineering	Dr. Frank A. DiBianca
J. Fred Holly Chair in Political Economy	Dr. Paul Davidson	UT Medical Group Chair in Obstetrics and Gynecology	Dr. Frank W. Ling
Bernadotte E. Schmitt Chair of History	Dr. Robert J. Norrell	LeBonheur Chair in Pediatrics	Dr. Russell W. Chesney
Chair of Science, Technology & Medical Writing	Dr. Mark Littmann	LeBonheur Chair in Pediatrics (Second Chair)	vacant
Forrest & Patsy Shumway Chair in Romance Language	Dr. Patrick Brady	Plough Foundation Chair in Pediatrics	Dr. Bruce S. Alpert
Pilot Chair in Management	Dr. Lawrence R. James	J.R. Hyde Chair in Rehabilitation Engineering	vacant
Clayton Homes Chair in Finance	Dr. James Wansley	Thomas A. Gerwin Chair in Physiology	Dr. Leonard R. Johnson
College of Business Administration Chair of Policy Studies	Dr. John T. Mentzer	First Tennessee Chair in Pediatric Clinical Pharmacy	Dr. William E. Evans
Bernard Blasingame Chair in Agricultural Policy	Dr. Daryll E. Ray	William & Dorothy Dunavant Chair in Pediatrics	Dr. Robert Williams
Willis Lincoln Chair in Physics	Dr. John Quinn	Federal Express Chair in Pediatrics	Dr. Mary Ellen Conley
Nancy Gore Hunger Chair in Environmental Studies	Dr. Daniel Simberloff	Semmes-Murphey Chair in Neurology	Dr. William A. Pulsinelli
		Maury W. Bronstein Chair in Cardiovascular Physiology	Dr. Aviv Isaak Hassid
<b>Space Institute</b>		Goodman Chair in Medicine	Dr. Andrew H. Kang
Edward J. and Carolyn P. Boling Chair of Space Propulsion	Dr. Gary A. Flandro	Mark S. Soloway Chair in Urology	Dr. Mitchell S. Steiner
H. H. Arnold Chair of Computational Mechanics	Dr. Charles L. Merkle		

SOURCE: Office of the Vice President for Research

**UNRESTRICTED EXPENDITURES AND TRANSFERS  
BY BUDGETARY FUNCTION  
WITH PERCENT DISTRIBUTION OF EXPENDITURES  
FY 1999-2004**

	ACTUAL					BUDGET
	FY 1999	FY 2000	FY 2001	FY 2002*	FY 2003*	FY 2004*
<b>TOTAL UNRESTRICTED CURRENT FUNDS EXPENDITURES &amp; TRANSFERS</b>	<b>369,240,287</b>	<b>394,258,034</b>	<b>421,966,402</b>	<b>794,335,522</b>	<b>773,589,156</b>	<b>766,059,697</b>
<b>TOTAL EDUCATION &amp; GENERAL EXPENDITURES</b>	<b>262,019,679</b>	<b>279,804,514</b>	<b>311,174,878</b>	<b>607,338,685</b>	<b>651,768,973</b>	<b>655,902,615</b>
<b>TRANSFERS (IN)/OUT</b>	<b>11,888,583</b>	<b>13,721,676</b>	<b>9,428,665</b>	<b>18,647,610</b>	<b>(14,046,337)</b>	<b>(8,977,669)</b>
<b>TOTAL EDUCATION &amp; GENERAL AUXILIARY ENTERPRISES FUNDS</b>	<b>273,908,262</b>	<b>293,526,190</b>	<b>320,603,543</b>	<b>625,986,295</b>	<b>637,722,636</b>	<b>646,924,946</b>
<b>WILLIAM F. BOWLD HOSPITAL</b>	<b>95,332,025</b>	<b>100,731,844</b>	<b>101,362,859</b>	<b>113,550,871</b>	<b>119,255,869</b>	<b>117,134,751</b>
<b>WILLIAM F. BOWLD HOSPITAL</b>				<b>54,798,356</b>	<b>16,610,651</b>	<b>2,000,000</b>
<b>EDUCATION &amp; GENERAL</b>						
Instruction	130,040,586	137,309,553	151,998,747	292,370,372	306,782,366	317,090,137
Research	8,434,848	10,884,539	16,088,550	50,393,860	53,731,090	44,578,708
Public Service	6,318,814	6,388,619	8,447,752	44,586,464	47,301,086	52,265,649
Academic Support	38,239,099	39,122,071	38,697,879	64,826,315	74,024,791	67,858,038
Student Services	26,494,951	25,921,129	27,618,852	31,308,986	35,259,383	36,648,604
Institutional Support	16,731,590	18,614,590	18,990,133	46,816,694	49,367,043	51,920,973
Operation and Maintenance of Physical Plant	25,302,195	27,917,929	34,650,354	54,797,869	59,990,303	59,125,131
Scholarship/Fellowship	10,457,596	13,646,083	14,682,611	22,238,125	25,312,911	26,415,375
<b>EXPENSES AS A PERCENT OF TOTAL EDUCATION &amp; GENERAL</b>						
Instruction	47.5%	46.8%	47.4%	46.7%	48.1%	49.0%
Research	3.1%	3.7%	5.0%	8.1%	8.4%	6.9%
Public Service	2.3%	2.2%	2.6%	7.1%	7.4%	8.1%
Academic Support	14.0%	13.3%	12.1%	10.4%	11.6%	10.5%
Student Services	9.7%	8.8%	8.6%	5.0%	5.5%	5.7%
Institutional Support	6.1%	6.3%	5.9%	7.5%	7.7%	8.0%
Operation & Maintenance of Physical Plant	9.2%	9.5%	10.8%	8.8%	9.4%	9.1%
Scholarship/Fellowship	3.8%	4.6%	4.6%	3.6%	4.0%	4.1%

SOURCE: Office of the Director of Finance

\*Data for 2002, 2003 and 2004 include Knoxville, Institute of Agriculture, Veterinary Medicine, Space Institute and Health Science Center



**UNRESTRICTED CURRENT REVENUE  
BY BUDGETARY FUNCTION AND REVENUE DOLLARS  
PER FULL-TIME EQUIVALENT STUDENT  
FY 1999-2004**

	ACTUAL					BUDGET
	FY 1999	FY 2000	FY 2001	FY 2002*	FY 2003*	FY 2004*
<b>TOTAL REVENUE</b>	<b>360,863,103</b>	<b>388,858,212</b>	<b>421,966,402</b>	<b>794,335,523</b>	<b>773,589,153</b>	<b>766,059,697</b>
<b>TOTAL EDUCATION &amp; GENERAL REVENUE</b>	<b>273,908,264</b>	<b>293,526,189</b>	<b>320,603,544</b>	<b>625,986,296</b>	<b>637,722,633</b>	<b>646,924,946</b>
<b>TOTAL AUXILIARY REVENUE</b>	<b>86,954,839</b>	<b>95,332,023</b>	<b>101,362,858</b>	<b>113,550,871</b>	<b>119,255,869</b>	<b>117,134,751</b>
<b>TOTAL WILLIAM F. BOWLD HOSPITAL</b>				<b>54,798,356</b>	<b>16,610,651</b>	<b>2,000,000</b>
<b>EDUCATION &amp; GENERAL REVENUE</b>						
Tuition and Fees	99,625,616	117,139,551	127,214,919	166,396,798	173,834,646	192,695,006
Federal Appropriations				13,760,810	11,839,020	13,305,513
State Appropriations	151,841,800	150,779,000	164,044,500	336,449,800	339,902,200	333,758,700
Local Appropriations				3,871,849	3,889,156	3,730,190
Federal Gifts, Grants and Contracts	6,619,524	8,618,313	8,361,816	40,476,127	42,233,070	35,677,883
State Gifts, Grants and Contracts	1,530,748	2,302,641	3,389,705	10,056,703	9,766,464	8,414,506
Local Gifts, Grants and Contracts	67,688	48,734	38,803	8,485,231	8,337,407	6,893,246
Private Gifts, Grants and Contracts	1,513,541	2,068,432	1,956,480	3,417,503	3,674,624	3,456,828
Gifts			649,719	701,090	619,391	676,500
Endowment Income	34,422	32,351	32,279	31,726	30,378	42,000
Sale and Service of Educational Activities	5,823,294	5,588,645	5,671,089	34,248,144	34,617,517	37,227,960
Other Sources	6,851,631	6,948,522	9,244,234	8,090,515	8,978,760	11,046,614
<b>REVENUE DOLLARS PER FULL-TIME EQUIVALENT (FTE) STUDENT</b>						
Revenue dollars per FTE Student	15,840	17,069	18,202	31,605	30,700	30,964
Education and General Revenue dollars per FTE Student	12,023	12,884	13,829	24,907	25,308	26,149
State Appropriation dollars per FTE Student	6,665	6,618	7,076	13,387	13,489	13,491
Number of FTE Students	22,782	22,782	23,183	25,133	25,198	24,740

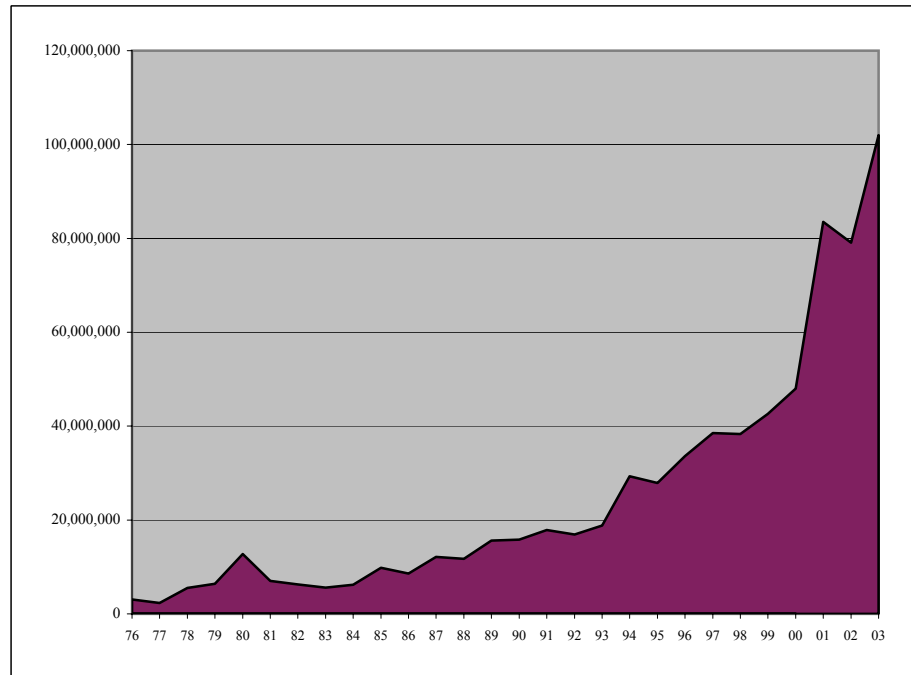
SOURCE: Office of the Director of Finance

NOTES: Endowment Income only includes income from Land Grant Endowment. Income from endowments created by private gifts are credited to the University of Tennessee System. Beginning in FY 2001, Gifts are reported separately from Grants and Contracts.

\*Data for 2002, 2003 and 2004 include Knoxville, Institute of Agriculture, Veterinary Medicine, Space Institute and Health Science Center

## NUMBER OF CONTRIBUTORS AND GIFTS FY 1977-2003

FISCAL YEAR	NUMBER OF DONORS	AMOUNT RAISED	AVERAGE GIFT
1976-77	N/A	2,318,564	N/A
1977-78	7,395	5,504,777	744
1978-79	7,754	6,434,738	830
1979-80	7,392	12,716,283	1,720
1980-81	8,224	6,997,761	851
1981-82	8,879	6,279,800	707
1982-83	8,926	5,608,056	628
1983-84	9,304	6,196,738	666
1984-85	10,364	9,826,048	948
1985-86	14,721	8,597,822	584
1986-87	19,947	12,133,924	608
1987-88	21,201	11,727,440	553
1988-89	21,227	15,581,262	734
1989-90	21,815	15,837,319	726
1990-91	23,359	17,876,619	765
1991-92	26,661	16,913,594	616
1992-93	27,701	18,807,636	679
1993-94	28,562	29,303,723	1,026
1994-95	31,621	27,861,586	881
1995-96	33,054	33,621,901	1,017
1996-97	33,026	38,536,237	1,167
1997-98	33,911	38,319,362	1,130
1998-99	37,117	42,583,818	1,147
1999-00	35,069	48,004,161	1,369
2000-01	46,546	83,519,546	1,794
2001-02	43,625	79,075,888	1,813
2002-03	45,142	102,015,719	2,260



SOURCE: Development Office

**AVERAGE SALARIES OF FULL-TIME INSTRUCTIONAL FACULTY  
BY COLLEGE AND RANK  
FY 2003-2004**

COLLEGE / SCHOOL	ALL RANKS	PROFESSOR	ASSOCIATE PROFESSOR	ASSISTANT PROFESSOR	INSTRUCTOR	LECTURER
<b>ALL COLLEGES</b>	<b>69,799</b>	<b>88,622</b>	<b>67,398</b>	<b>55,749</b>	<b>41,046</b>	<b>34,629</b>
Agricultural Science and Natural Resources	67,713	79,092	62,188	52,307	37,712	
Architecture & Design	66,293	80,801	66,378	52,320		*
Arts and Sciences - Humanities	52,777	74,126	55,610	46,185	41,383	30,108
Arts and Sciences - Natural Sciences	75,598	95,576	71,761	56,241	*	33,726
Arts and Sciences - Social Sciences	61,579	78,413	58,983	49,564	38,617	32,417
Business Administration	93,030	118,183	90,668	85,119	58,403	53,308
Communication & Information	62,236	83,817	62,530	49,163	*	31,500
Education, Health & Human Sciences	64,509	81,366	58,821	51,071	35,061	37,631
Engineering	83,512	94,887	72,558	66,146	*	
Health Science Center	72,215	86,338	68,709	61,500	*	
Law	112,511	128,425	91,701			
Nursing	53,726	80,193	32,953	53,783	36,775	
Social Work	63,314	88,760	63,764	51,462		
Veterinary Medicine	76,406	88,595	74,118	62,711	*	

SOURCE: IRIS

\*If less than three individuals, salaries are not reported.

NOTE: Includes Knoxville, Institute of Agriculture, Veterinary Medicine, Space Institute, and Health Science Center

**MEDIAN GRADUATE ASSISTANT STIPENDS**  
**FY 1984-2004**

FY	TOTAL ASSISTANTSHIPS		GRADUATE TEACHING ASSOCIATE		GRADUATE TEACHING ASSISTANT		GRADUATE RESEARCH ASSISTANT		GRADUATE ASSISTANT	
	Number of Students	Median Stipend	Number of Students	Median Stipend	Number of Students	Median Stipend	Number of Students	Median Stipend	Number of Students	Median Stipend
1983-84	1,177	4,801	5	5,073	599	4,908	199	6,340	374	3,976
1984-85	1,251	5,497	3	7,674	642	5,723	181	7,068	425	4,574
1985-86	1,343	5,778	2	6,399	680	6,062	198	7,323	463	4,886
1986-87	1,432	6,281	6	5,856	682	6,497	265	6,871	479	5,130
1987-88	1,468	6,535	178	6,846	541	6,697	309	6,953	440	5,335
1988-89	1,581	6,773	193	7,120	553	6,847	279	6,891	556	5,870
1989-90	1,659	7,095	212	7,405	571	7,121	351	7,821	525	5,884
1990-91	1,755	7,620	227	8,265	550	7,651	407	8,259	571	6,618
1991-92	1,727	7,697	247	7,701	542	7,721	440	8,180	498	6,577
1992-93	1,809	7,712	247	7,701	584	7,719	424	8,834	554	6,577
1993-94	1,881	8,077	276	8,247	606	8,005	445	9,652	554	7,041
1994-95	1,928	8,805	336	8,923	585	9,006	426	10,144	581	7,470
1995-96	1,855	8,666	317	8,922	558	8,624	388	9,829	592	7,323
1996-97	1,786	8,926	320	9,230	554	9,386	388	10,110	524	7,282
1997-98	1,731	9,028	307	9,231	557	9,434	354	10,161	513	7,455
1998-99	1,777	9,462	329	9,686	550	9,045	364	11,119	534	7,438
1999-00	1,780	10,220	316	10,883	591	10,552	347	11,567	526	8,562
2000-01	1,762	10,669	285	11,100	584	11,006	338	12,065	555	9,245
2001-02	1,879	11,834	290	12,943	622	12,488	355	13,163	612	9,873
2002-03	2,113	12,041	298	12,785	636	12,532	511	12,674	668	10,758
2003-04	2,217	12,241	306	13,144	681	12,836	573	13,074	657	10,478

SOURCE: IRIS

NOTE: Stipends were equated to a half-time (20-hour week) academic year salary.

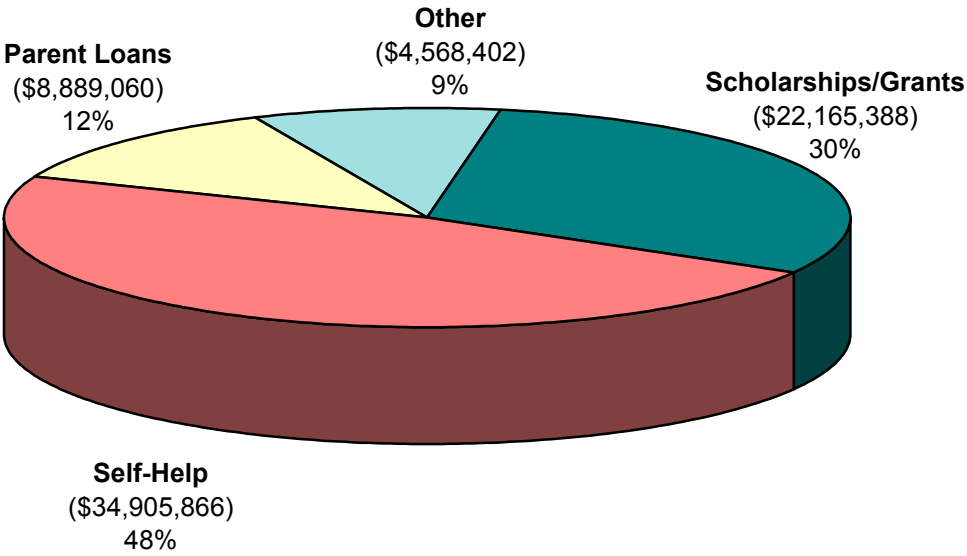
**STUDENT TUITION  
BY LEVEL  
ACADEMIC YEAR 2003-2004**

	IN-STATE	OUT-OF-STATE
<b>KNOXVILLE CAMPUS</b>		
UNDERGRADUATE	4,450	13,532
GRADUATE	5,032	14,114
LAW	7,830	19,886
VET MED	8,934	24,810
<b>HEALTH SCIENCE CENTER</b>		
<b>ALLIED HEALTH</b>		
Cytotechnology	4,989	16,239
Dental Hygiene - First Year	3,954	12,620
Dental Hygiene - Second Year	3,854	12,520
Health Information Management	5,087	16,280
Medical Technology - First Year	5,653	18,154
Medical Technology - Second Year	3,674	12,008
Occupational Therapy - First Year	5,756	18,767
Occupational Therapy - Second Year	3,778	12,452
Occupational Therapy - Third Year	1,259	3,969
Physical Therapy - First Year	6,502	15,166
Physical Therapy - Second Year	6,402	15,066
Physical Therapy - Third Year	6,402	15,066
<b>COLLEGE OF NURSING</b>		
First Year or Returning Student	7,056	16,472
December Graduate	3,489	8,197
MSN December Graduate	3,489	8,197

	IN-STATE	OUT-OF-STATE
<b>HEALTH SCIENCE CENTER (Continued)</b>		
<b>GRADUATE HEALTH SCIENCES</b>		
First Year	6,042	17,604
Returning Student	6,042	17,604
December Graduate	3,021	8,802
June Graduate	6,042	17,604
<b>COLLEGE OF DENTISTRY</b>		
First Year	12,397	30,027
Second Year	12,221	29,851
Third Year	12,221	29,851
Fourth Year	12,256	29,886
<b>COLLEGE OF MEDICINE</b>		
First Year	16,271	32,185
Second Year	16,171	32,085
Third Year	16,118	32,032
Fourth Year	16,118	32,032
<b>COLLEGE OF PHARMACY</b>		
First Year	9,668	21,450
Second Year	9,568	21,350
Third Year	9,590	21,372
Fourth Year	9,590	21,372
<b>SPACE INSTITUTE</b>		
GRADUATE	4,550	13,382

SOURCE: Office of Financial Aid

**NEED-BASED FINANCIAL AID  
ACADEMIC YEAR 2003-2004**



**TOTAL: \$72,822,510**

SOURCE: Office of Financial Aid

**NUMBER AND PERCENT OF OCCUPANCY FOR STUDENT RESIDENCE HALLS  
AND MARRIED/GRADUATE STUDENT HOUSING  
FALL 2003**

<b>STUDENT RESIDENCE HALLS</b>				
<b>HALL NAME</b>	<b>NUMBER OF ROOMS</b>	<b>NUMBER OF BEDS</b>	<b>OCCUPANCY AS OF 9-24-03</b>	<b>PERCENT OCCUPANCY</b>
<b>TOTAL</b>	<b>3,593</b>	<b>7,337</b>	<b>6,075</b>	<b>83%</b>
Apartment Residence Hall	306	1,150	1,030	90%
Clement Hall	353	703	583	83%
Gibbs Hall	116	218	180	83%
Greve Hall	199	381	290	76%
Hess Hall	512	1,026	687	67%
Humes Hall	260	518	498	96%
Massey Hall	292	584	443	76%
Melrose Hall	224	191	168	88%
Morrill Hall	379	757	606	80%
North Carrick Hall	248	494	432	87%
Reese Hall	260	512	496	97%
South Carrick Hall	271	530	484	91%
Strong Hall	173	273	178	65%

<b>MARRIED/GRADUATE STUDENT HOUSING</b>				
<b>APARTMENT COMPLEX</b>	<b>NUMBER OF BUILDINGS</b>	<b>NUMBER OF APARTMENTS</b>	<b>OCCUPANCY AS OF 9-24-03</b>	<b>PERCENT OCCUPANCY</b>
<b>TOTAL</b>	<b>65</b>	<b>1,669</b>	<b>1,222</b>	<b>73%</b>
Golf Range Apartments	25	417	298	71%
Laurel Apartments	1	316	284	90%
Kingston Apartments	1	233	182	78%
Sutherland Apartments	13	417	302	72%
Goodman Family Residence Hall (Memphis)	1	192	156	81%

SOURCE: Department of University Housing

**MAIN LIBRARY  
HOLDINGS AND EXPENDITURES  
FY 1999-2003**

<b>CATALOGED MATERIALS</b>	<b>FY 98/99</b>	<b>FY 99/00</b>	<b>FY 00/01</b>	<b>FY 01/02</b>	<b>FY 02/03</b>	<b>FY 99-03 % CHANGE</b>
<b>VOLUMES</b>	<b>2,023,845</b>	<b>2,063,284</b>	<b>2,120,518</b>	<b>2,152,555</b>	<b>2,288,183</b>	<b>13.06</b>
<b>TITLES</b>	<b>1,097,241</b>	<b>1,121,600</b>	<b>1,157,773</b>	<b>1,182,995</b>	<b>1,231,250</b>	<b>12.21</b>
<b>NON-PRINT MATERIALS</b>						
Audio	28,706	27,621	28,328	28,525	30,048	4.67
Cartographic	3,805	4,110	4,251	4,339	6,455	69.65
Film/Video	8,197	8,861	9,527	9,719	10,905	33.04
Graphic	135,720	133,728	130,562	124,153	125,820	(7.29)
Microform	2,356,296	2,395,224	2,418,310	2,476,362	2,566,626	8.93
Computer File/CD-ROM	1,149	1,221	1,290	1,431	1,309	13.93
<b>PERIODICALS AND OTHER SERIALS RECEIVED</b>						
Number of Titles	10,191	11,902	13,309	14,073	14,284	40.16
<b>EXPENDITURES</b>	<b>10,845,325</b>	<b>11,898,192</b>	<b>11,790,275</b>	<b>12,302,454</b>	<b>15,605,403</b>	<b>43.89</b>

SOURCE: Office of the Dean of Libraries



**LAW LIBRARY  
HOLDINGS AND EXPENDITURES  
FY 1999-2003**

<b>CATALOGED MATERIALS</b>	<b>FY 98/99</b>	<b>FY 99/00</b>	<b>FY 00/01</b>	<b>FY 01/02</b>	<b>FY 02/03</b>	<b>FY 99-03 % CHANGE</b>
<b>VOLUMES AND EQUIVALENTS</b>	<b>469,108</b>	<b>483,372</b>	<b>498,656</b>	<b>515,524</b>	<b>529,720</b>	<b>12.9</b>
<b>TITLES</b>	<b>93,733</b>	<b>95,337</b>	<b>97,308</b>	<b>98,975</b>	<b>104,458</b>	<b>11.4</b>
<b>NON-PRINT MATERIALS</b>						
Non-print titles	39,407	39,583	39,618	39,639	40,555	2.9
Microfilm reels	1,073	1,088	1,104	1,134	1,148	7.0
Microfiche units	1,145,172	1,182,566	1,216,264	1,254,502	1,290,236	12.7
Microform equivalent volumes	190,862	202,354	208,051	214,754	221	(99.9)
<b>SERIALS</b>						
Serial Titles	5,828	5,726	5,726	6,174	6,274	7.7
Number of Serial Subscriptions	6,465	6,363	6,363	6,847	6,981	8.0
<b>EXPENDITURES</b>	<b>2,096,338</b>	<b>2,130,916</b>	<b>2,204,143</b>	<b>2,318,174</b>	<b>2,488,537</b>	<b>18.7</b>

SOURCE: College of Law Library

**HEALTH SCIENCE CENTER LIBRARY  
HOLDINGS AND EXPENDITURES  
FY 1999-2003**

CATALOGED MATERIALS	FY 98/99	FY 99/00	FY 00/01	FY 01/02	FY 02/03	FY 99-03 % CHANGE
<b>VOLUMES</b>	182,304	185,204	185,860	187,349	188,319	3.30
<b>TITLES</b>	38,538	39,990	38,812	39,535	39,850	3.40
<b>NON-PRINT MATERIALS</b>						
Audiovisual	2,367	2,385	2,395	2,438	2,054	(13.88)
Microform	105	105	105	105	105	0.00
Computer File/CD-ROM	NA	16	16	16	91	468.75
<b>PERIODICALS RECEIVED</b>						
Number of Titles	1,405	1,349	1,458	1,460	1,488	5.91
<b>EXPENDITURES</b>	2,231,616	2,285,537	2,209,208	2,125,305	2,577,303	15.49

SOURCE: Health Sciences Library & Education Center

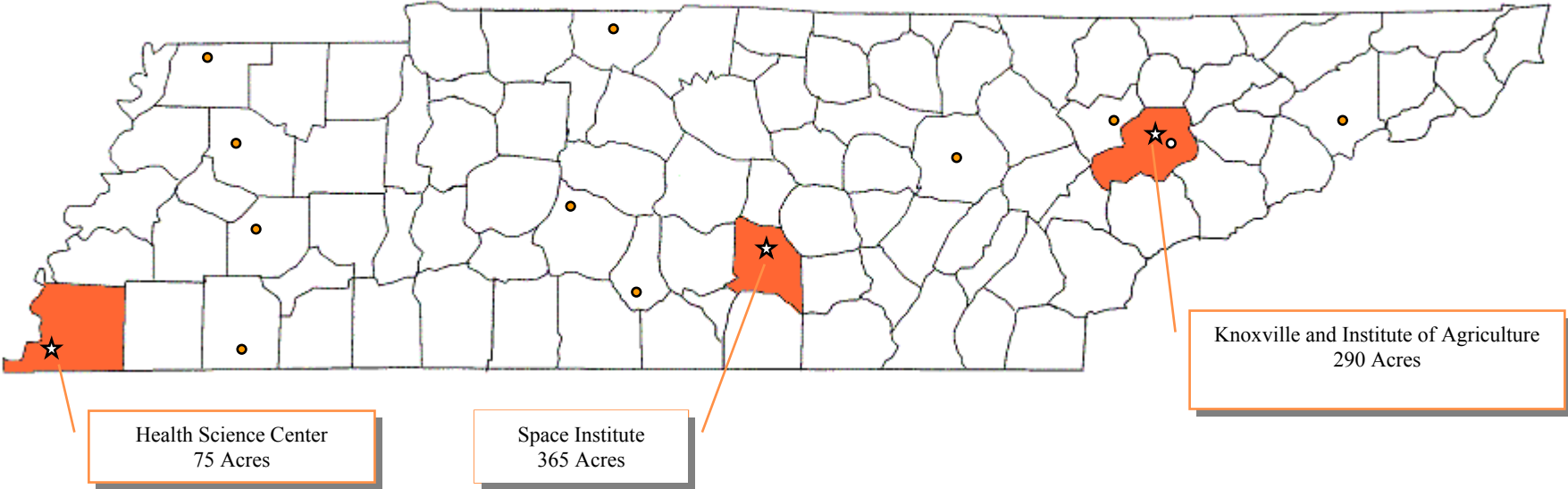
NOTE: Percentages for non-print materials uses first year available as base year.

**SPACE INSTITUTE LIBRARY  
HOLDINGS AND EXPENDITURES  
FY 2001-2003**

CATALOGED MATERIALS	FY 00/01	FY 01/02	FY 02/03	FY 01-03 % CHANGE
<b>VOLUMES</b>	75,224	75,788	76,075	1.13
<b>COLLECTIONS</b>				
Bound volumes	23,927	24,380	24,556	2.63
Technical Reports	51,327	51,407	51,463	0.26
Net volumes added	645	569	176	(72.71)
<b>NON-PRINT MATERIALS</b>				
Film/Video	79	79	79	0.00
Microform	209,480	211,865	213,552	1.94
Computer File	64	64	83	29.69
Other Audio/Visual	143	154	154	7.69
<b>PERIODICALS AND OTHER SERIALS RECEIVED</b>				
Number of Titles	214	186	154	(28.04)
<b>EXPENDITURES</b>	233,772	215,181	197,348	(15.58)

SOURCE: Office of the Dean of Libraries

# UNIVERSITY OF TENNESSEE FACILITIES AND ACREAGE FALL 2003



SOURCE: Facilities Services

- ★ Campuses
- Branch Agricultural Experiment Stations (approximately 40,000 acres)

**ONE YEAR RETENTION RATES  
FIRST-TIME FULL-TIME FRESHMEN  
FALL TERMS 1983-2002**

Enrollment Year	Total		Male		Female		Black		White		Other	
	Number	Rate	Number	Rate	Number	Rate	Number	Rate	Number	Rate	Number	Rate
1983	3,150	77.9	1,631	77.9	1,519	77.9	184	75.5	2,874	78.1	92	75.0
1984	3,195	78.0	1,607	77.5	1,588	78.5	175	70.9	2,941	78.4	79	78.5
1985	3,299	78.7	1,694	77.9	1,605	79.6	191	75.4	3,055	79.0	53	77.4
1986	3,503	77.5	1,811	76.9	1,692	78.1	205	78.5	3,246	77.4	52	80.8
1987	3,683	78.6	1,886	77.7	1,797	79.5	181	74.0	3,437	78.8	65	78.5
1988	3,708	78.9	1,959	76.7	1,749	81.3	192	73.4	3,462	79.2	54	74.1
1989	3,296	80.0	1,696	79.4	1,600	80.7	185	80.5	3,045	80.1	66	77.3
1990	3,336	79.5	1,706	78.5	1,630	80.6	239	81.2	3,006	79.1	91	87.9
1991	2,986	81.5	1,540	80.7	1,446	82.4	217	80.7	2,668	81.4	101	86.1
1992	3,136	80.0	1,584	79.3	1,552	80.9	209	78.5	2,815	80.0	112	83.9
1993	2,799	78.6	1,391	77.3	1,408	79.8	175	78.9	2,521	78.4	103	81.6
1994	2,850	75.9	1,470	74.5	1,380	77.4	144	77.1	2,604	75.8	102	75.5
1995	3,427	76.8	1,639	74.8	1,788	78.6	153	83.7	3,141	76.2	133	84.2
1996	3,637	76.7	1,795	74.4	1,842	78.9	192	79.7	3,305	76.4	140	78.6
1997	3,823	78.1	1,882	76.7	1,941	79.4	243	84.0	3,408	77.8	172	76.2
1998	3,747	78.7	1,791	76.7	1,956	80.6	273	78.0	3,336	79.0	138	73.2
1999	4,099	75.4	1,931	71.7	2,168	78.7	328	72.6	3,607	75.8	164	74.4
2000	3,794	78.3	1,840	76.3	1,954	80.3	265	81.5	3,356	77.7	155	85.2
2001	3,898	75.5	1,914	72.1	1,984	78.8	190	75.1	3,405	75.7	203	69.0
2002	3,638	77.8	1,761	76.7	1,877	78.8	321	83.5	3,115	77.5	202	73.3

SOURCE: Student Information System

**FOUR YEAR GRADUATION RATES  
FIRST-TIME FULL-TIME FRESHMEN  
FALL TERMS 1983-1999**

Enrollment Year	Total		Male		Female		Black		White		Other	
	Number	Rate	Number	Rate	Number	Rate	Number	Rate	Number	Rate	Number	Rate
1983	3,150	23.0	1,631	17.7	1,519	28.8	184	10.9	2,874	23.8	92	25.0
1984	3,195	24.9	1,607	19.7	1,588	30.1	175	9.7	2,941	25.6	79	30.4
1985	3,299	24.1	1,694	19.7	1,605	28.8	191	11.0	3,055	24.8	53	30.2
1986	3,503	22.2	1,811	17.7	1,692	27.0	205	8.8	3,246	23.0	52	26.9
1987	3,683	21.4	1,886	14.5	1,797	28.6	181	7.7	3,437	22.0	65	26.2
1988	3,708	22.8	1,959	16.5	1,749	29.8	192	10.4	3,462	23.5	54	22.2
1989	3,296	24.7	1,696	19.6	1,600	30.1	185	8.7	3,045	25.6	66	30.3
1990	3,336	23.6	1,706	17.4	1,630	30.2	239	12.1	3,006	24.4	91	27.5
1991	2,986	25.1	1,540	17.3	1,446	33.5	217	21.2	2,668	25.1	101	34.7
1992	3,136	22.6	1,584	16.8	1,552	28.6	209	13.9	2,815	23.2	112	24.1
1993	2,799	24.1	1,391	17.3	1,408	30.8	175	15.4	2,521	24.7	103	23.3
1994	2,850	23.6	1,470	15.5	1,380	32.3	144	12.5	2,604	24.4	102	18.6
1995	3,427	26.8	1,639	20.2	1,788	32.9	153	19.0	3,141	27.0	133	31.6
1996	3,637	28.4	1,795	19.9	1,842	36.8	192	17.7	3,305	29.0	140	30.7
1997	3,823	27.5	1,882	19.3	1,941	35.4	243	20.6	3,408	28.0	172	26.2
1998	3,747	26.7	1,791	16.7	1,956	35.9	273	18.7	3,336	27.6	138	21.1
1999	4,099	28.7	1,931	18.9	2,168	37.4	328	24.7	3,607	29.1	164	26.2

SOURCE: Student Information System and Academic Inventory

**FIVE YEAR GRADUATION RATES  
FIRST-TIME FULL-TIME FRESHMEN  
FALL TERMS 1983-1998**

Enrollment Year	Total		Male		Female		Black		White		Other	
	Number	Rate	Number	Rate	Number	Rate	Number	Rate	Number	Rate	Number	Rate
1983	3,150	48.5	1,631	47.0	1,519	50.2	184	34.8	2,874	49.4	92	48.9
1984	3,195	45.6	1,607	42.1	1,588	49.1	175	30.3	2,941	46.3	79	50.6
1985	3,299	47.5	1,694	45.5	1,605	49.6	191	28.3	3,055	48.7	53	49.1
1986	3,503	45.0	1,811	41.7	1,692	48.5	205	32.2	3,246	45.9	52	40.4
1987	3,683	45.3	1,886	41.1	1,797	49.6	181	30.9	3,437	45.9	65	53.8
1988	3,708	49.1	1,959	44.1	1,749	54.7	192	36.5	3,462	49.8	54	46.3
1989	3,296	48.4	1,696	44.7	1,600	52.3	185	34.1	3,045	49.2	66	53.0
1990	3,336	48.5	1,706	44.1	1,630	53.1	239	33.9	3,006	49.5	91	55.0
1991	2,986	48.9	1,540	42.3	1,446	56.0	217	39.2	2,668	49.7	101	49.5
1992	3,136	48.4	1,584	44.6	1,552	52.3	209	34.9	2,815	49.4	112	48.2
1993	2,799	49.7	1,391	45.9	1,408	53.4	175	35.4	2,521	50.6	103	51.5
1994	2,850	50.7	1,470	44.6	1,380	54.6	144	36.1	2,604	50.7	102	34.3
1995	3,427	52.4	1,639	46.3	1,788	58.1	153	44.4	3,141	52.6	133	58.6
1996	3,637	51.8	1,795	45.7	1,842	57.8	192	39.1	3,305	52.4	140	55.0
1997	3,823	53.1	1,882	47.0	1,941	59.1	243	47.7	3,408	53.8	172	43.6
1998	3,747	53.3	1,491	46.0	1,956	60.0	273	45.4	3,336	54.0	138	52.2

SOURCE: Student Information System and Academic Inventory

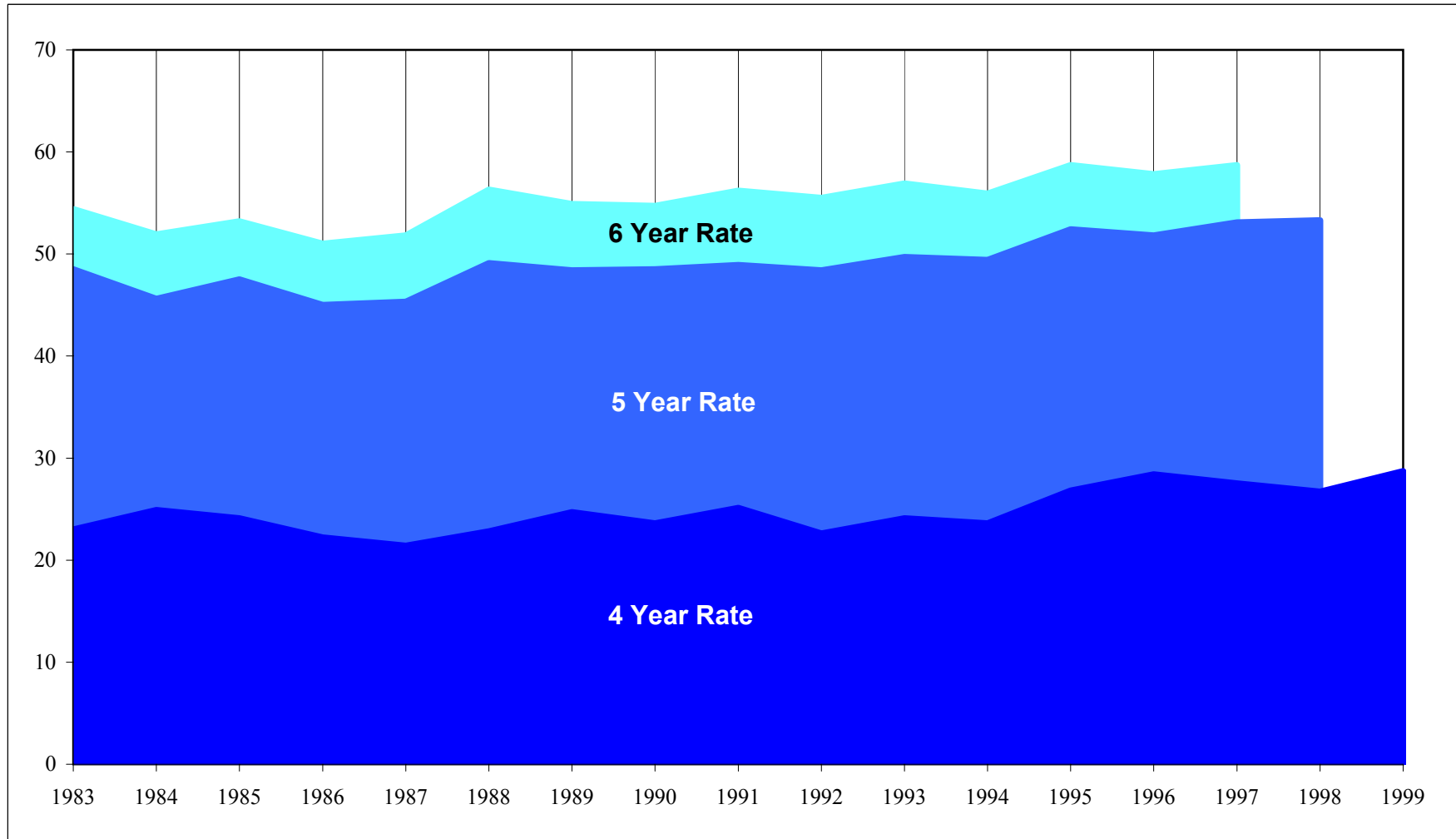
**SIX YEAR GRADUATION RATES  
FIRST-TIME FULL-TIME FRESHMEN  
FALL TERMS 1983-1997**

Enrollment Year	Total		Male		Female		Black		White		Other	
	Number	Rate	Number	Rate	Number	Rate	Number	Rate	Number	Rate	Number	Rate
1983	3,150	54.4	1,631	54.0	1,519	55.0	184	43.5	2,874	55.2	92	52.2
1984	3,195	51.9	1,607	50.0	1,588	53.9	175	40.0	2,941	52.5	79	57.0
1985	3,299	53.2	1,694	52.0	1,605	54.5	191	36.1	3,055	54.2	53	56.6
1986	3,503	51.0	1,811	48.8	1,692	53.3	205	42.0	3,246	51.7	52	42.3
1987	3,683	51.8	1,886	49.2	1,797	54.6	181	42.5	3,437	52.1	65	63.1
1988	3,708	56.3	1,959	52.8	1,749	60.2	192	46.4	3,462	56.9	54	51.9
1989	3,296	54.9	1,696	53.1	1,600	56.8	185	42.7	3,045	55.5	66	62.1
1990	3,336	54.7	1,706	52.2	1,630	57.3	239	41.4	3,006	55.7	91	58.2
1991	2,986	56.2	1,540	51.7	1,446	60.9	217	46.5	2,668	56.9	101	58.4
1992	3,136	55.5	1,584	54.2	1,552	56.9	209	44.0	2,815	56.5	112	53.6
1993	2,799	56.9	1,391	54.9	1,408	58.9	175	45.1	2,521	57.4	103	64.1
1994	2,850	55.2	1,470	52.1	1,380	58.4	144	43.0	2,604	56.2	102	46.6
1995	3,427	58.7	1,639	54.1	1,788	63.0	153	52.9	3,141	58.8	133	62.4
1996	3,637	57.8	1,795	53.3	1,842	62.3	192	46.3	3,305	58.4	140	55.4
1997	3,823	58.7	1,882	54.1	1,941	63.2	243	53.9	2,408	59.2	172	57.0

SOURCE: Student Information System and Academic Inventory



**GRADUATION RATES  
FIRST-TIME FULL-TIME FRESHMEN  
FALL TERMS 1983-1999**



SOURCE: Student Information System and Academic Inventory

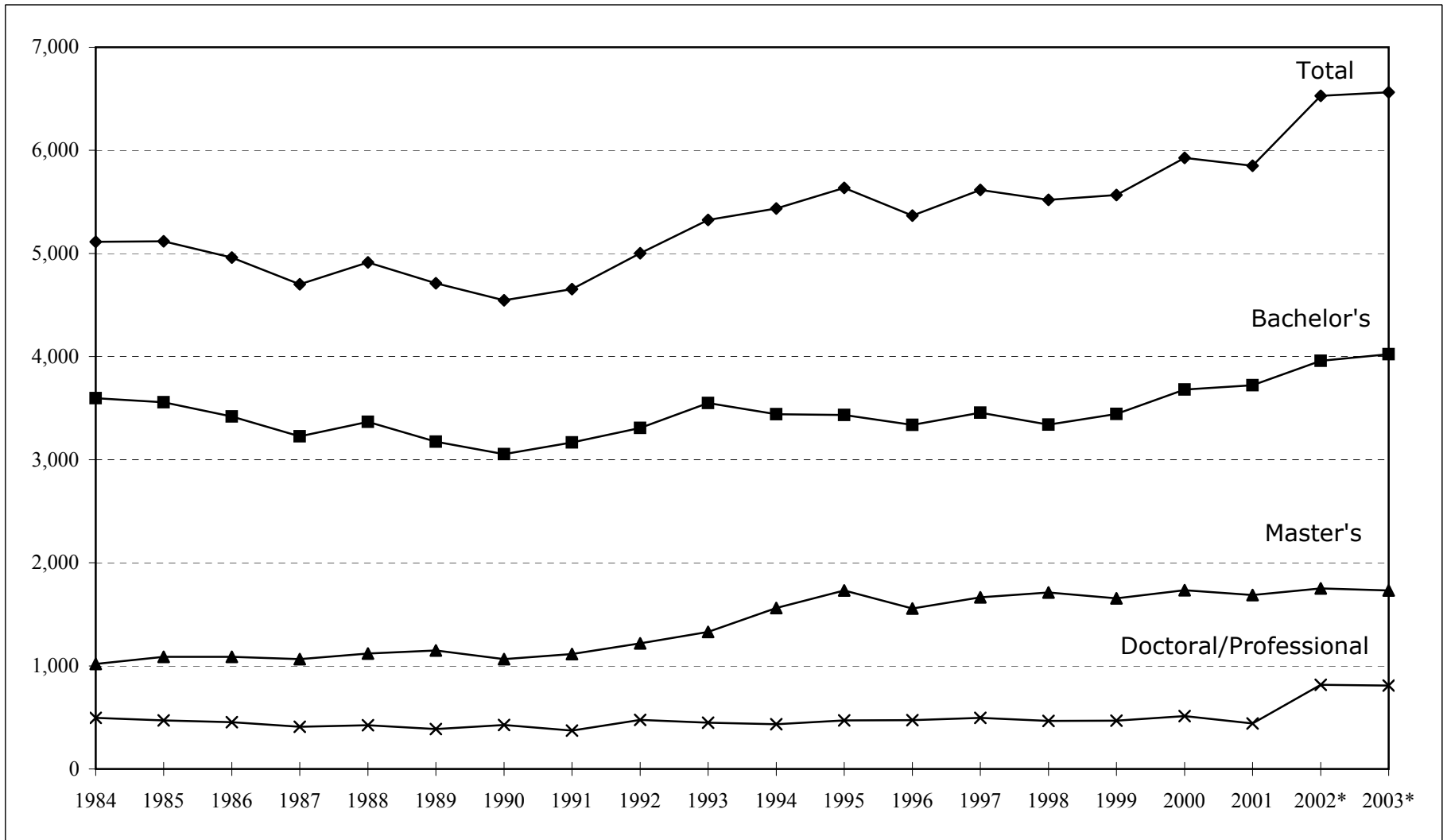
**SUMMARY OF DEGREES CONFERRED  
BY DISCIPLINE  
FY 1999-2003**

	BACHELOR'S					MASTER'S					DOCTORAL/PROFESSIONAL				
	98-99	99-00	00-01	01-02*	02-03*	98-99	99-00	00-01	01-02*	02-03*	98-99	99-00	00-01	01-02*	02-03*
<b>DEGREES AWARDED</b>	<b>3,443</b>	<b>3,681</b>	<b>3,722</b>	<b>3,959</b>	<b>4,022</b>	<b>1,655</b>	<b>1,753</b>	<b>1,687</b>	<b>1,752</b>	<b>1,732</b>	<b>468</b>	<b>512</b>	<b>441</b>	<b>817</b>	<b>810</b>
<b>DOCTORAL</b>											<b>255</b>	<b>286</b>	<b>239</b>	<b>276</b>	<b>262</b>
<b>PROFESSIONAL</b>											<b>213</b>	<b>226</b>	<b>202</b>	<b>541</b>	<b>548</b>
<b>COLLEGE/SCHOOL</b>															
Agricultural Sciences & Natural Resources	232	207	224	226	225	60	62	77	63	55	17	12	5	11	3
Architecture & Design	65	65	88	56	77	24	10	16	5	15	0	0	0	0	0
Arts & Sciences	1,509	1,488	1,373	1,558	1,551	292	287	235	273	250	113	118	93	90	84
Biomedical Science	0	0	0	0	0	0	0	0	0	0	4	0	2	2	1
Business Administration	571	633	824	768	825	231	258	280	263	277	16	16	18	8	9
Communication & Information	236	318	330	355	397	74	67	105	78	94	6	9	5	8	8
Education, Health & Human Sciences	432	501	459	491	465	631	639	598	597	567	52	83	70	86	73
Engineering	276	304	294	284	280	148	159	147	127	121	29	32	31	19	28
Health Science Center				71	57				102	93				361	368
Intercollegiate Programs	0	0	0	0	0	14	18	23	17	22	6	9	9	8	3
Law	0	0	0	0	0	0	0	0	0	0	155	164	144	154	161
Nursing	91	125	112	120	110	51	43	36	40	37	7	5	3	5	1
Social Work	31	40	18	30	35	130	210	170	187	201	5	2	3	3	6
Veterinary Medicine	0	0	0	0	0	0	0	0	0	0	58	62	58	62	65

SOURCE: Academic Inventory

\*Data for 2002 and 2003 include Knoxville, Institute of Agriculture, Veterinary Medicine, Space Institute and Health Science Center

## SUMMARY OF DEGREES CONFERRED BY LEVEL FY 1984-2003

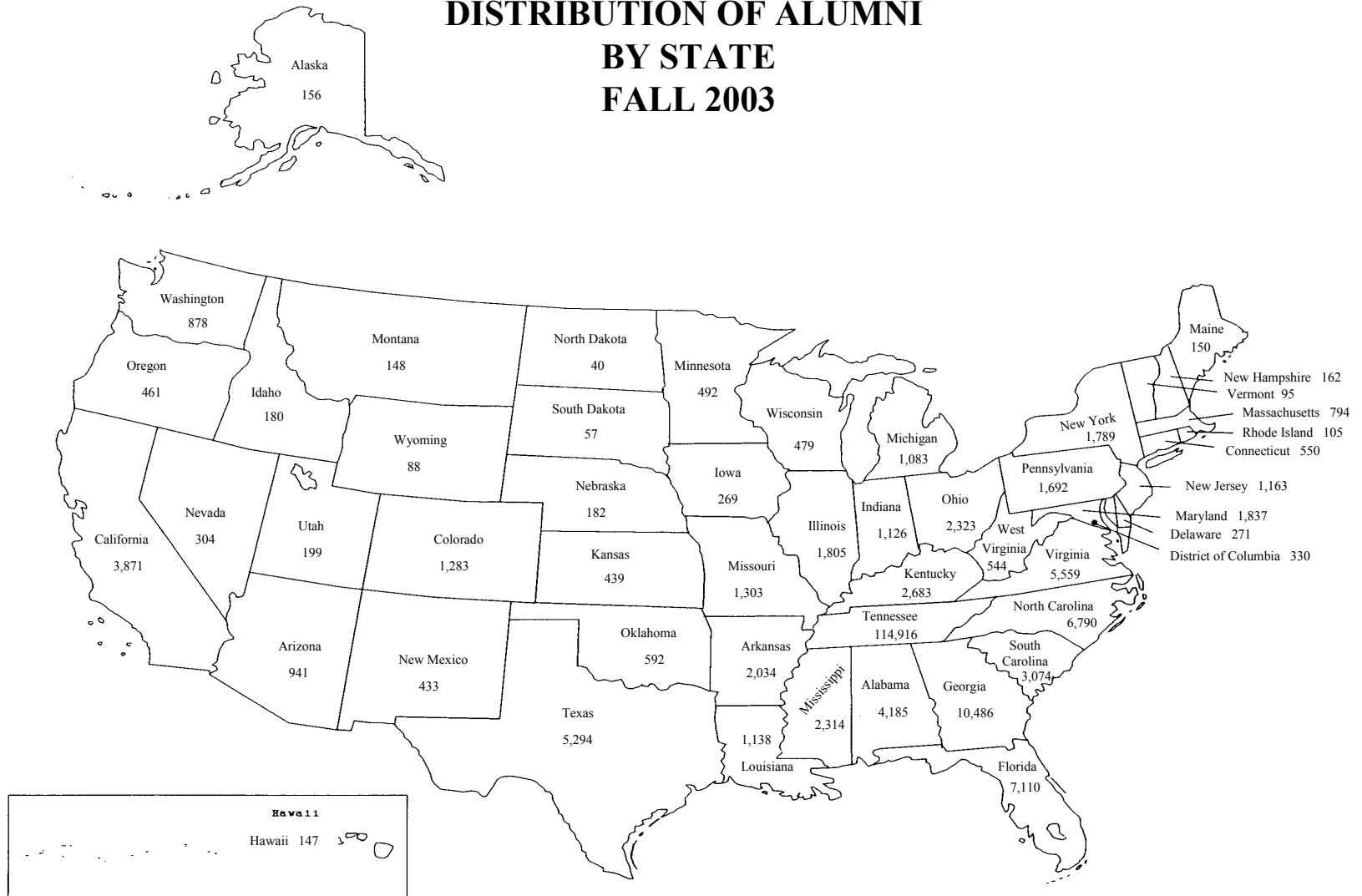


SOURCE: Academic Inventory

\*Data for 2002 and 2003 include Knoxville, Institute of Agriculture, Veterinary Medicine, Space Institute and Health Science Center



# DISTRIBUTION OF ALUMNI BY STATE FALL 2003



SOURCE: Student Information System

NOTES: Includes Knoxville, Institute of Agriculture, Veterinary Medicine, Space Institute and Health Science Center. These figures may include duplicates. If an alumnus has degrees from both Knoxville and the Health Science Center, they are counted twice.

**DEGREES AWARDED BY MAJOR  
FY 1996-2003**

Major	Degree Awarded	1995-96	1996-97	1997-98	1998-99	1999-00	2000-01	2001-02	2002-03
Accounting	Bachelor's	117	112	102	99	129	184	144	167
	Master's	57	74	66	80	76	74	82	81
Advertising	Bachelor's	44	56	48	52	82	83	97	108
Aerospace Engineering	Bachelor's	8	10	6	3	10	11	9	11
	Master's	8	9	3	7	2	4	4	6
	PhD	0	3	2	0	1	1	1	3
Agricultural & Extension Education	Bachelor's	6	10	9	7	15	9	11	10
	Master's	6	7	9	7	10	11	11	3
Agricultural Economics & Business	Bachelor's	20	21	14	20	16	22	15	13
	Master's	4	8	10	3	4	12	6	8
	PhD	1	3	3	3	0	0	0	
Agricultural Mechanization	Bachelor's	4	0	0	1	0	0	0	0
Anatomy *	Master's							0	2
	PhD							4	2
Animal Science	Bachelor's	43	50	46	40	35	61	56	56
	Master's	4	10	5	4	8	7	6	4
	PhD	1	2	1	4	2	0	6	1
Anthropology	Bachelor's	51	37	47	38	54	38	45	55
	Master's	4	16	9	13	8	7	11	10
	PhD	4	2	8	6	7	6	6	2
Architecture	Bachelor's	48	45	37	47	49	67	40	56
	Master's	0	1	5	5	10	16	5	15
Area, Ethnic & Cultural Studies	Bachelor's	21	40	47	36	63	35	59	57
Art History	Bachelor's	11	8	4	9	11	8	13	11
Art Education	Master's	3	1	0	0	0	0	0	0

continued

**DEGREES AWARDED BY MAJOR  
FY 1996-2003**

Major	Degree Awarded	1995-96	1996-97	1997-98	1998-99	1999-00	2000-01	2001-02	2002-03
Audiology	Bachelor's	11	4	4	9	8	11	10	4
	Master's	26	11	9	14	14	16	15	11
Biochemistry & Cellular & Molecular Biology**	Bachelor's	16	15	16	16	9	1	0	1
	Master's	2	2	4	0	0	5	6	2
	PhD	1	3	5	2	4	3	10	9
Biological Sciences**	Master's	13	13	13	8	1	0	2	2
	PhD	10	7	10	8	1	3	4	1
Biology	Bachelor's	92	118	121	145	137	129	107	119
Biomedical Engineering *	Master's							9	7
	PhD							0	1
Biosystems Engineering	Bachelor's	7	8	11	6	5	7	6	7
	Master's	4	3	0	2	1	5	3	1
	PhD	0	1	2	2	1	1	1	0
Biosystems Engineering Technology	Master's	6	6	7	4	5	0	6	3
Botany	Bachelor's	9	9	5	4	3	2	0	0
	Master's	4	7	2	3	2	4	0	3
	PhD	1	2	2	0	2	1	4	3
Broadcasting	Bachelor's	65	82	90	90	88	95	86	82
Business Administration	Bachelor's	77	55	60	78	89	90	95	107
	Master's	106	92	109	138	169	182	164	177
	PhD	12	9	11	5	8	9	5	5
Business/Marketing Education	Bachelor's	37	23	29	16	9	3	0	0

continued

**DEGREES AWARDED BY MAJOR  
FY 1996-2003**

Major	Degree Awarded	1995-96	1996-97	1997-98	1998-99	1999-00	2000-01	2001-02	2002-03
Chemical Engineering	Bachelor's	39	57	37	27	36	42	27	28
	Master's	9	15	3	9	8	10	4	8
	PhD	3	10	3	3	7	0	3	3
Chemistry	Bachelor's	12	13	11	14	11	13	16	18
	Master's	3	7	10	7	7	5	3	5
	PhD	16	14	6	14	21	9	10	12
Child Development	Bachelor's	55	56	41	44	48	49	73	88
	Master's	5	13	23	11	33	23	30	32
Civil Engineering	Bachelor's	77	63	65	73	61	61	48	68
	Master's	17	30	18	20	40	28	22	20
	PhD	9	7	2	3	4	3	1	3
Classics	Bachelor's	1	2	2	5	6	7	7	2
Clinical Laboratory Sciences *	Master's							0	1
Counseling	Master's	9	7	16	13	13	11	16	8
Communications	Master's	28	18	31	39	25	27	26	35
	PhD	6	7	6	6	9	5	8	8
Comparative & Experimental Medicine	Master's	3	0	3	2	2	1	3	2
	PhD	6	3	6	6	5	4	5	3
Computer Engineering	Bachelor's	0	0	0	0	0	0	13	20
Computer Science	Bachelor's	14	20	29	25	22	35	45	45
	Master's	20	21	23	32	28	23	27	30
	PhD	3	4	5	3	3	2	1	2
Curriculum & Instruction	Master's	284	309	195	9	2	0	0	0
	PhD	6	12	3	0	0	0	0	0
Cytotechnology *	Bachelor's							5	8

continued



**DEGREES AWARDED BY MAJOR  
FY 1996-2003**

Major	Degree Awarded	1995-96	1996-97	1997-98	1998-99	1999-00	2000-01	2001-02	2002-03
Dentistry *	DDS							75	74
Dental Sciences *	Master's							6	5
Dental Hygiene *	Bachelor's							25	24
Ecology & Evolutionary Biology	Bachelor's	0	0	0	0	0	1	1	0
	Master's	4	9	8	2	0	7	4	4
	PhD	5	3	3	3	2	8	3	6
Economics (CAS)	Bachelor's	53	55	60	57	55	77	92	83
Economics (CBA)	Bachelor's	4	3	7	10	9	11	8	9
	Master's	6	5	7	2	3	7	3	3
	PhD	12	4	4	5	6	7	3	3
Education Administration & Supervision	Master's	21	20	10	9	15	10	14	7
	PhD	8	16	7	7	9	7	2	2
Education	Master's	0	0	130	343	360	367	314	344
	PhD	33	38	37	28	55	42	54	48
Educational Psychology	Master's	20	32	33	42	29	36	48	34
	PhD	0	0	0	0	2	0	3	0
Electrical Engineering	Bachelor's	73	63	62	52	66	52	50	44
	Master's	23	23	14	17	19	14	11	26
	PhD	9	5	3	2	1	7	4	4
Engineering Physics	Bachelor's	2	2	1	1	2	3	1	1
Engineering Science	Bachelor's	27	19	21	15	11	21	23	17
	Master's	11	12	6	17	5	5	7	4
	PhD	9	6	6	3	4	4	2	4
English	Bachelor's	142	139	146	160	166	155	162	147
	Master's	13	15	22	16	26	12	18	24
	PhD	14	7	11	14	7	3	8	8

continued

**DEGREES AWARDED BY MAJOR  
FY 1996-2003**

Major	Degree Awarded	1995-96	1996-97	1997-98	1998-99	1999-00	2000-01	2001-02	2002-03
Entomology & Plant Pathology	Master's	9	4	13	5	9	7	4	8
Environmental Engineering	Master's	37	34	25	21	16	9	9	13
Epidemiology *	Master's							5	6
Exercise Science	Bachelor's	0	47	47	35	48	54	48	29
Family Studies	Bachelor's	0	17	38	47	61	41	38	34
Finance	Bachelor's	107	132	116	136	144	146	135	150
Food Science & Technology	Bachelor's	11	6	5	15	7	6	12	11
	Master's	4	7	6	9	5	6	6	7
	PhD	3	5	1	2	4	1	3	0
Forestry	Bachelor's	38	26	19	29	17	16	21	18
	Master's	5	3	2	9	5	8	5	3
French	Bachelor's	16	9	9	12	9	14	12	12
	Master's	2	4	1	10	4	1	2	5
Geography	Bachelor's	15	22	19	21	16	16	19	23
	Master's	8	11	6	3	3	5	6	10
	PhD	3	2	3	2	2	3	2	2
Geology	Bachelor's	22	15	11	4	9	10	11	12
	Master's	7	8	6	8	7	8	10	5
	PhD	2	4	3	1	2	2	4	3
German	Bachelor's	8	10	9	9	9	10	7	4
	Master's	3	3	3	2	3	3	5	3
Graphic Design	Bachelor's	22	23	25	21	27	31	23	8
Health Education	Bachelor's	22	13	15	9	12	11	6	7
	Master's	9	11	9	5	7	4	7	1
	PhD	1	2	4	1	0	1	1	0

continued

**DEGREES AWARDED BY MAJOR  
FY 1996-2003**

Major	Degree Awarded	1995-96	1996-97	1997-98	1998-99	1999-00	2000-01	2001-02	2002-03
Health Information Management *	Bachelor's							13	7
Health Science Administration *	PhD							3	0
History	Bachelor's	65	71	93	82	87	96	84	78
	Master's	6	9	11	12	3	3	9	4
	PhD	4	7	3	7	1	1	4	5
Hotel & Restaurant Management	Bachelor's	46	33	45	37	38	29	41	26
	Master's	2	8	0	2	0	0	0	0
Human Ecology Education	Bachelor's	2	4	1	0	0	0	0	0
Human Ecology	Master's	3	3	5	5	1	1	0	0
	PhD	13	26	22	16	17	20	26	23
Human Performance & Sports Studies	Bachelor's	49	5	2	2	1	0	0	0
	Master's	39	54	57	71	81	71	78	49
Human Resource Development	Bachelor's	32	60	29	43	57	39	50	56
	Master's	50	44	44	33	36	27	24	32
Human Services	Bachelor's	29	26	20	27	26	18	21	23
Industrial & Organizational Psychology	Master's	1	0	0	0	0	0	0	0
	PhD	4	11	1	3	4	5	3	0
Industrial Education	Bachelor's	0	0	0	0	0	10	3	0
Industrial Engineering	Bachelor's	35	30	38	33	34	36	37	24
	Master's	36	35	32	23	40	44	30	20
Information Sciences	Master's	34	46	50	35	42	78	52	59
Interior Design	Bachelor's	21	13	16	18	16	21	16	21
	Master's	3	0	4	3	0	0	0	0
Italian	Bachelor's	0	1	1	1	0	2	4	2

continued

**DEGREES AWARDED BY MAJOR  
FY 1996-2003**

Major	Degree Awarded	1995-96	1996-97	1997-98	1998-99	1999-00	2000-01	2001-02	2002-03
Journalism	Bachelor's	68	69	66	94	94	109	139	168
Law	JD	142	134	149	155	164	144	154	161
Logistics & Transportation	Bachelor's	71	110	103	132	130	152	135	174
Management Science	Master's	1	7	4	4	2	4	2	5
	PhD	2	4	1	3	2	2	0	1
Marketing	Bachelor's	107	81	78	108	124	145	135	152
Materials Science & Engineering	Bachelor's	7	7	8	6	2	6	8	6
	Master's							6	5
	PhD								2
Mathematics	Bachelor's	32	26	19	25	15	18	15	15
	Master's	18	21	15	16	19	12	14	9
	PhD	4	7	4	4	7	6	3	2
Mechanical Engineering	Bachelor's	76	70	79	59	76	62	58	50
	Master's	16	20	9	16	11	16	16	10
	PhD	4	0	5	4	6	6	4	2
Medical Technology **	Bachelor's	11	11	5	5	5	5	14	11
Medicine	MD							158	153
Metallurgical Engineering	Master's	6	6	2	7	5	6	4	0
	PhD	3	4	5	4	3	1	2	1
Microbiology**	Bachelor's	20	15	15	14	19	13	3	0
	Master's	3	1	3	4	3	5	4	2
	PhD	3	5	8	1	4	6	3	3

continued

**DEGREES AWARDED BY MAJOR  
FY 1996-2003**

Major	Degree Awarded	1995-96	1996-97	1997-98	1998-99	1999-00	2000-01	2001-02	2002-03
Modern Foreign Languages	PhD	2	2	2	1	3	2	2	4
Multi/Interdisciplinary Studies	Bachelor's	132	121	117	89	67	44	64	36
	Master's	20	11	17	12	16	22	14	20
Music Education	Bachelor's	4	0	0	0	0	0	0	0
Music	Bachelor's	16	20	27	25	21	30	36	36
	Master's	18	20	28	14	25	15	26	24
Nuclear Engineering	Bachelor's	11	12	11	7	6	0	10	11
	Master's	19	8	12	9	11	4	9	7
	PhD	6	5	6	7	3	6	2	5
Nursing**	Bachelor's	102	101	104	91	125	112	120	110
	Master's	47	48	42	51	43	36	65	68
	PhD	5	1	2	7	5	3	21	21
Nutrition	Bachelor's	13	22	8	10	12	16	15	11
	Master's	8	11	9	12	5	16	14	9
Occupational Therapy *	Bachelor's							21	12
Ornamental Horticulture	Bachelor's	43	45	42	44	65	65	56	40
	Master's	3	3	5	6	2	6	2	1
Pathology *	Master's							0	0
	PhD							4	2
Pharmacology *	Master's							0	0
	PhD							1	7
Pharmacy *	PharmD							92	95

continued

**DEGREES AWARDED BY MAJOR  
FY 1996-2003**

Major	Degree Awarded	1995-96	1996-97	1997-98	1998-99	1999-00	2000-01	2001-02	2002-03
Physical Therapy *	Bachelor's							1	0
	Master's							54	41
Physiology *	Master's							1	0
	PhD							0	1
Pharmaceutics *	Master's							1	0
	PhD							1	5
Philosophy	Bachelor's	15	8	8	10	15	7	20	13
	Master's	4	8	4	3	6	6	9	5
	PhD	2	1	4	7	2	3	4	4
Physics	Bachelor's	5	4	4	2	3	3	7	4
	Master's	12	7	7	6	3	1	6	9
	PhD	9	8	8	4	10	13	7	7
Planning	Master's	4	11	35	16	23	21	16	20
Plant Science	Bachelor's	28	43	42	33	16	12	17	46
	Master's	7	12	6	5	7	7	7	7
	PhD	1	3	0	6	5	3	1	2
Political Science	Bachelor's	105	111	102	102	93	97	142	157
	Master's	7	6	4	8	5	2	7	4
	PhD	5	6	9	7	7	1	7	4
Polymer Engineering	Master's	4	1	2	2	2	8	5	2
	PhD	5	1	0	3	3	3	0	1
Psychology	Bachelor's	240	293	265	268	286	299	358	392
	Master's	4	13	10	5	4	8	10	4
	PhD	18	14	6	20	16	17	11	12
Public Administration	Bachelor's	8	7	6	2	2	4	8	5
	Master's	7	6	10	10	5	6	12	5

continued

**DEGREES AWARDED BY MAJOR  
FY 1996-2003**

Major	Degree Awarded	1995-96	1996-97	1997-98	1998-99	1999-00	2000-01	2001-02	2002-03
Public Health	Bachelor's	0	1	0	0	0	0	0	0
	Master's	21	15	23	23	24	17	28	24
Recreation & Tourism Management	Bachelor's	34	33	28	29	38	50	43	40
	Master's	14	11	16	10	13	8	15	11
Rehabilitation Counseling	Master's	12	16	15	9	2	0	0	0
Religious Studies	Bachelor's	11	10	12	11	13	7	8	14
Russian	Bachelor's	6	1	4	3	1	5	1	1
Safety Education & Service	Master's	18	8	10	13	12	0	2	11
Social Work	Bachelor's	30	34	24	31	40	18	30	35
	Master's	163	179	170	130	210	170	187	201
	PhD	3	1	6	5	2	3	3	6
Sociology	Bachelor's	70	75	91	106	100	100	123	98
	Master's	5	5	11	10	4	2	4	4
	PhD	4	4	2	3	4	6	3	4
Spanish	Bachelor's	20	18	16	25	38	29	39	45
	Master's	10	3	5	5	7	4	5	3
Special Education	Bachelor's	31	40	28	23	36	26	28	35
	Master's	36	44	47	15	2	2	0	0
Speech Communications	Bachelor's	41	45	46	53	54	43	33	39
Speech Pathology	Bachelor's	36	37	36	42	42	29	37	36
	Master's	53	47	72	64	56	38	34	25
	PhD	2	1	2	2	3	0	3	0
Sports Management	Bachelor's	11	22	32	44	59	50	68	62

continued

**DEGREES AWARDED BY MAJOR  
FY 1996-2003**

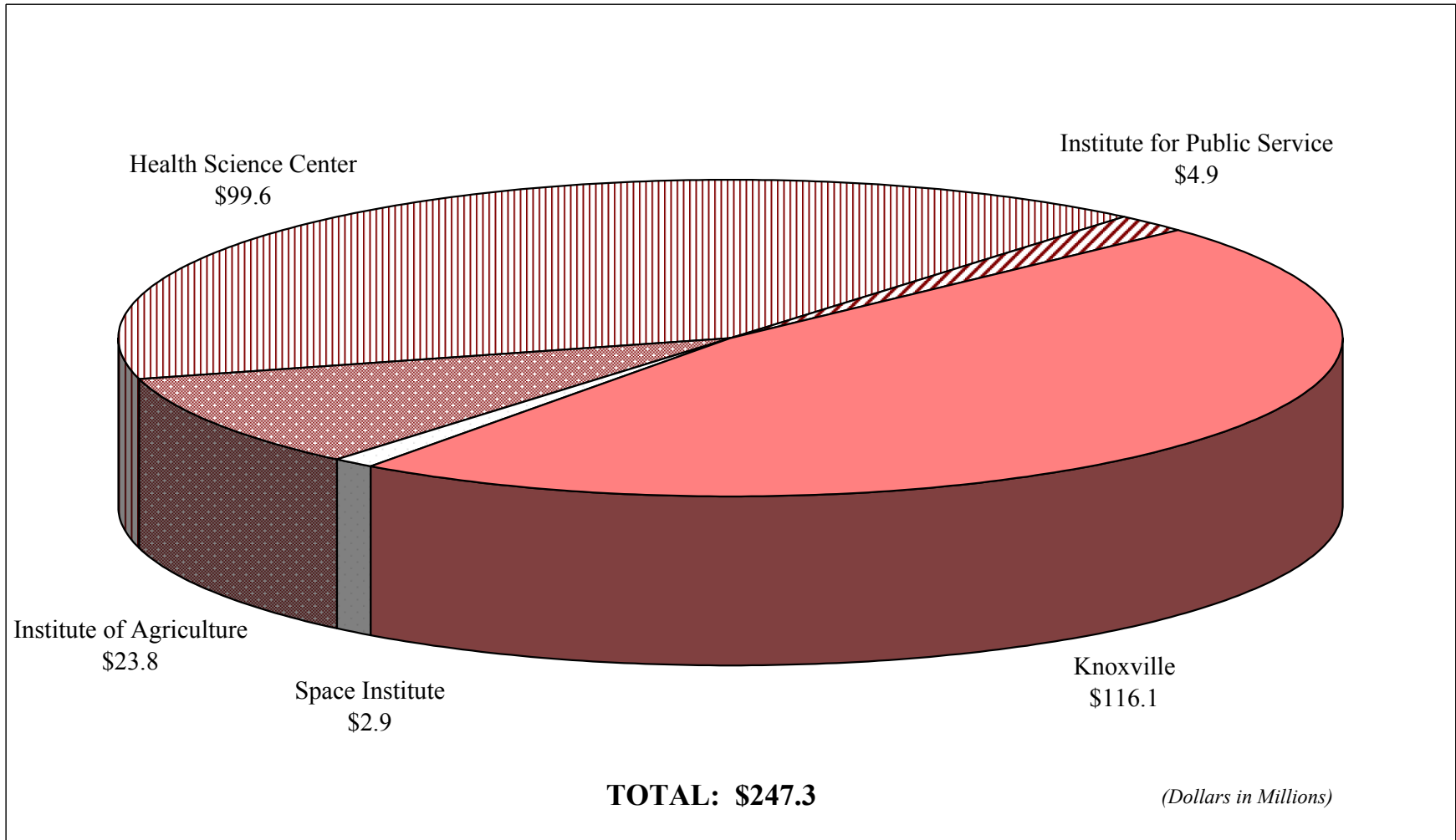
Major	Degree Awarded	1995-96	1996-97	1997-98	1998-99	1999-00	2000-01	2001-02	2002-03
Statistics	Bachelor's	13	7	3	7	6	15	16	10
	Master's	10	8	12	7	9	13	12	11
Studio Art	Bachelor's	28	40	40	30	41	49	52	47
	Master's	11	13	9	7	8	13	6	14
Textiles, Retailing & Consumer Sciences	Bachelor's	76	62	65	66	56	63	57	54
	Master's	0	0	3	6	4	5	7	5
Theatre	Bachelor's	11	19	14	19	17	24	20	22
	Master's	2	8	6	3	11	3	3	4
Toxicology *	Master's							0	0
Veterinary Medicine	DVM	51	66	64	58	62	58	62	65
Wildlife & Fisheries Science	Bachelor's	38	46	30	37	31	26	32	24
	Master's	12	7	6	6	6	7	7	10
Zoology	Bachelor's	40	31	26	11	10	0	0	0
	Master's	1	2	6	7	1	0	0	0
	PhD	4	3	1	8	10	0	0	0
<b>TOTALS</b>									
	<b>Bachelor's</b>	<b>3,336</b>	<b>3,455</b>	<b>3,340</b>	<b>3,443</b>	<b>3,681</b>	<b>3,722</b>	<b>3,722</b>	<b>4,022</b>
	<b>Master's</b>	<b>1,557</b>	<b>1,666</b>	<b>1,712</b>	<b>1,655</b>	<b>1,753</b>	<b>1,687</b>	<b>1,687</b>	<b>1,732</b>
	<b>PhD</b>	<b>281</b>	<b>295</b>	<b>254</b>	<b>255</b>	<b>286</b>	<b>239</b>	<b>239</b>	<b>262</b>
	<b>Professional</b>	<b>193</b>	<b>200</b>	<b>213</b>	<b>213</b>	<b>226</b>	<b>202</b>	<b>880</b>	<b>548</b>
	<b>All Degrees</b>	<b>5,367</b>	<b>5,616</b>	<b>5,519</b>	<b>5,566</b>	<b>5,946</b>	<b>5,850</b>	<b>6,528</b>	<b>6,564</b>

\*Degrees Awarded through the Health Science Center

\*\*Degrees Awarded at both the Knoxville Campus and the Health Science Center

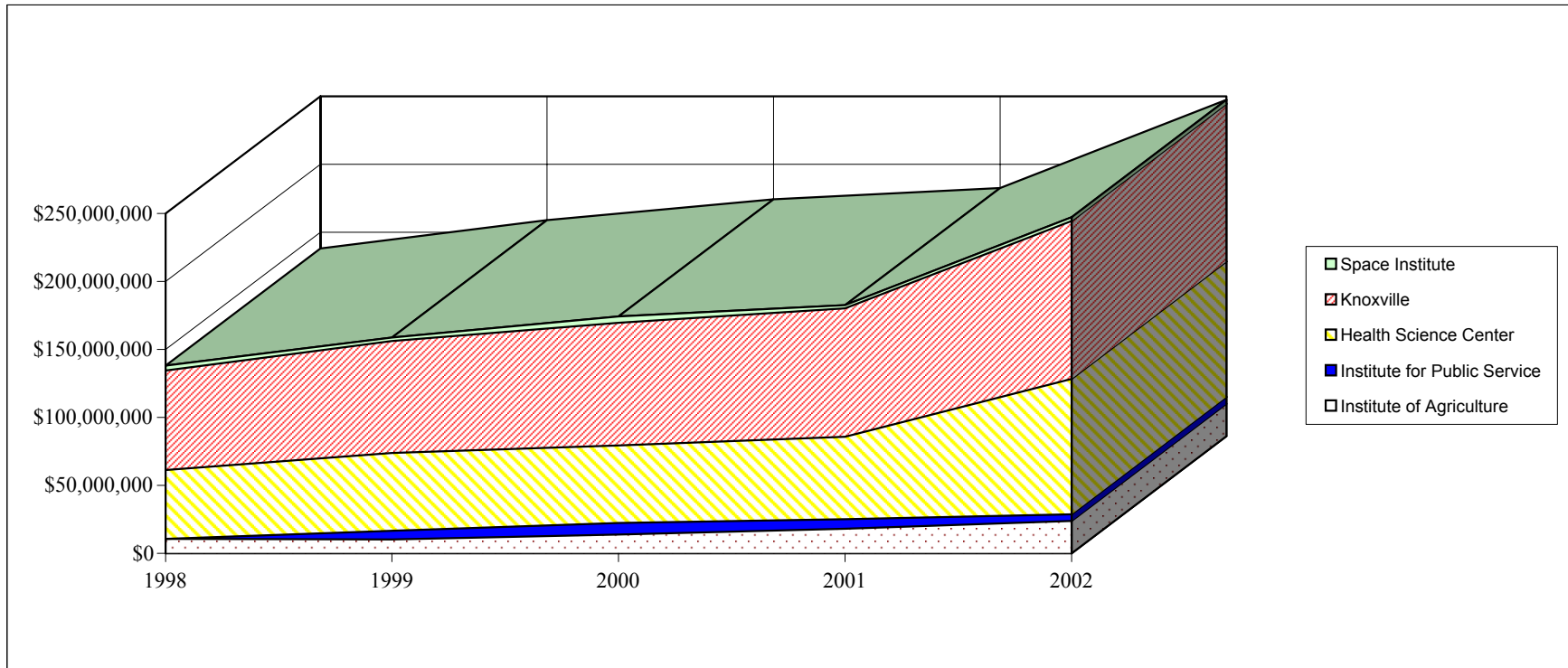


**RESEARCH AWARDS  
BY CAMPUS  
FY 2002**



SOURCE: Office of Research Administration

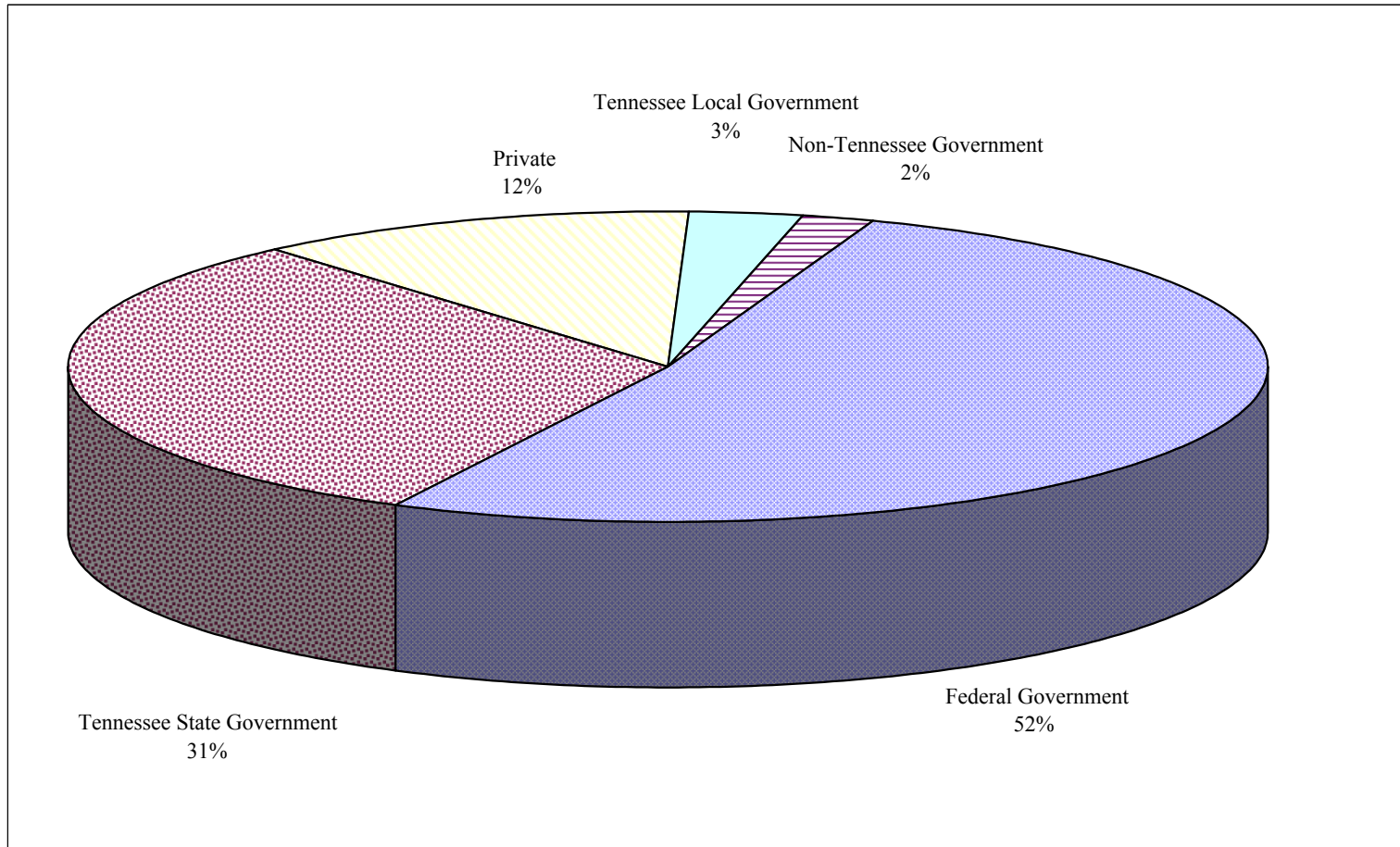
## RESEARCH AWARDS BY CAMPUS FY 1998-2002



	1998	1999	2000	2001	2002
Institute of Agriculture	\$10,665,900	\$10,106,912	\$13,745,605	\$17,952,771	\$23,844,523
Institute for Public Service		\$6,512,867	\$8,535,818	\$7,020,252	\$4,917,173
Health Science Center	\$50,594,458	\$57,197,585	\$57,023,086	\$60,802,219	\$99,642,392
Knoxville	\$73,257,218	\$82,406,661	\$90,395,516	\$94,511,592	\$116,122,143
Space Institute	\$3,599,141	\$2,643,781	\$4,586,364	\$2,245,125	\$2,869,867
<b>TOTAL</b>	<b>\$138,116,717</b>	<b>\$158,867,806</b>	<b>\$174,286,389</b>	<b>\$182,531,959</b>	<b>\$247,396,098</b>

SOURCE: Office of Research Administration

**RESEARCH AWARDS  
BY SOURCE  
FY 2002  
(AS PERCENTAGES)**



SOURCE: Office of Research Annual Report

## **INSTITUTE OF AGRICULTURE PLANT BIOTECHNOLOGY**



The University of Tennessee Institute of Agriculture dedicated a new \$22 million Plant Biotechnology Building on Thursday, Oct. 16, 2003. The facility is expected to generate new products and industries, create jobs, and expand markets and demand for Tennessee's agricultural products and enterprises.

The facility's state-of-the-art teaching laboratories feature the latest developments in instructional technology, including Internet access from individual seats in a tiered lecture hall.

Among the research tools in the 130,000-square-foot facility are a phytotron that scientists use to control plant growth; a core genomics hub; a biosecurity lab where scientists can work on emerging plant diseases; a geographic information system lab with the latest software for precision agriculture; and many other features that make it Tennessee's finest facility for applying biotechnology to agriculture.

Source: Institute of Agriculture

## COLLEGE OF VETERINARY MEDICINE OPEN HOUSE



Source: College of Veterinary Medicine

The veterinary open house is held each year to better acquaint the public with veterinary medicine and services provided at the College of Veterinary Medicine, which was established in 1974.

Special veterinary attractions include various breeds of horses and dogs, wildlife animals, and petting zoo. Activities include tours of the veterinary building, demonstrations and exhibits related to veterinary medicine and information for those interested in a career in veterinary medicine.

The first day of the open house is reserved for groups from elementary schools. Approximately 2000 school age children participate in the open house each year.

## INSTITUTE OF PUBLIC SERVICE NATIONAL FORENSIC ACADEMY



The National Forensic Academy is an intensive 10-week training program designed to meet the needs of law enforcement agencies in evidence identification, collection, and preservation. The NFA is offered in-residence, utilizing curriculum developed by leading forensic practitioners from across the United States. Participants are challenged in the various disciplines through classroom instruction, lab activities, and field practicums in the specialized courses. Academy participants will complete written and in-class competency exams to demonstrate mastery of the subject areas. The goal of the Academy is to prepare the crime scene investigator to recognize key elements and to improve the process of evidence recovery and submission.

Source: National Forensic Academy